

OIL CONSERVATION DIVISION
PO Box 2088
Santa Fe, NM 87504-2088

Box 1900, Hobbs, NM 88241-1900
District IV
PO Drawer 00, Artesia, NM 88211-0719
Box 111
Box 111, Lordsburg, NM 87842
District IV
PO Box 1000, Santa Fe, NM 87504-1000

☒ AMENDED RE

WELL LOCATION AND ACREAGE DEDICATION PLAT

API Number 30-045-29478	Field Code 96353/96354/	Well Name Barker Dome Desert Creek WC- Hermosa 3132N14D
Property Code 18725	Property Name Ute Mountain Ute	Well Number 48
OCRED No. 14538	Operator Name BURLINGTON RESOURCES OIL & GAS COMPANY LP	Location 6856'

10 Surface Location

UL or lot no.	Section	Township	Range	Lot 1/4	Feet from the	North/South line	Feet from the	East/West line	County
D	31	32-N	14-W		820	North	1190	West	S.J.

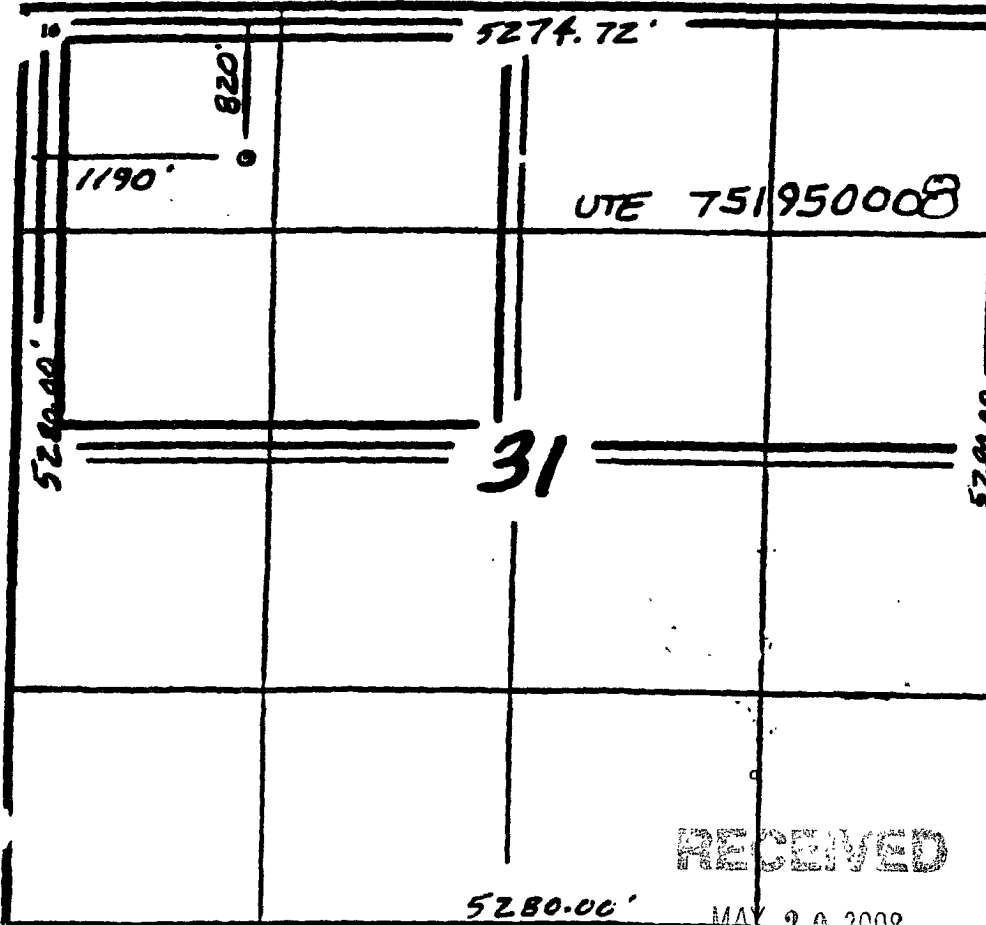
11 Bottom Hole Location If Different From Surface

UL or lot no.	Section	Township	Range	Lot 1/4	Feet from the	North/South line	Feet from the	East/West line	County

Dedicated Acres 820/160/160	John or Infill	Consolidation Code	Order No.
--------------------------------	----------------	--------------------	-----------

RCVD JUN 20 '08
OIL CONS. DIV.
DIST. 3

NO ALLOWABLE WILL BE ASSIGNED TO THIS COMPLETION UNTIL ALL INTERESTS HAVE BEEN CONSOLIDATED
OR A NON-STANDARD UNIT HAS BEEN APPROVED BY THE DIVISION



17 OPERATOR CERTIFICATION

I hereby certify that the information contained herein is true and complete to the best of my knowledge and belief, and that this organization either owns a working interest or unleased mineral interest in the land including the proposed bottom hole location or has a right to drill this well at this location pursuant to a contract with an owner of such a mineral or working interest, or to a voluntary pooling agreement or a compulsory pooling order heretofore entered by the division.

Signature: Tracey N. Monroe Date: 4/19/08

Printed Name

18 SURVEYOR CERTIFICATION

I hereby certify that the well location shown on this plat was plotted from field notes of actual surveys made by me or under my supervision, and that the same is true and correct to the best of my belief.

4/16/97

Date of Survey

Signature and Seal of Professional Surveyor:

6857

Certificate Number