

District I
PO Box 1980, Hobbs, NM 88241-1980

District II
PO Drawer 00, Artesia, NM 88211-0719

District III
1000 Rio Brazos Rd., Aztec, NM 87410

District IV
PO Box 2088, Santa Fe, NM 87504-2088

State of New Mexico
Energy, Minerals & Natural Resources Department

OIL CONSERVATION DIVISION
PO Box 2088
Santa Fe, NM 87504-2088

Form
Revised February 2
Instructions
Submit to Appropriate District
State Lease - 4
Fee Lease - 3

☒ AMENDED RE

WELL LOCATION AND ACREAGE DEDICATION PLAT

API Number 30-045-29548	Pool Name 975821/17695/97648 Barker Dome Hermosa	Well Name WC 32N14W22, Cut Hole - WC 32N14W22 - Rico
Property Code 18725	Property Name UTE MOUNTAIN UTE	Well Number 50
GRID No. 14538	Operator Name BURLINGTON RESOURCES OIL & GAS COMPANY LP	Elevation 6231

10 Surface Location

U. of Sec. No.	Section	Township	Range	Lot No.	Feet from line	North/South Line	Feet from line	East/West Line	County
F	22	32N	14W		1800	North	1850	West	SAN JUAN

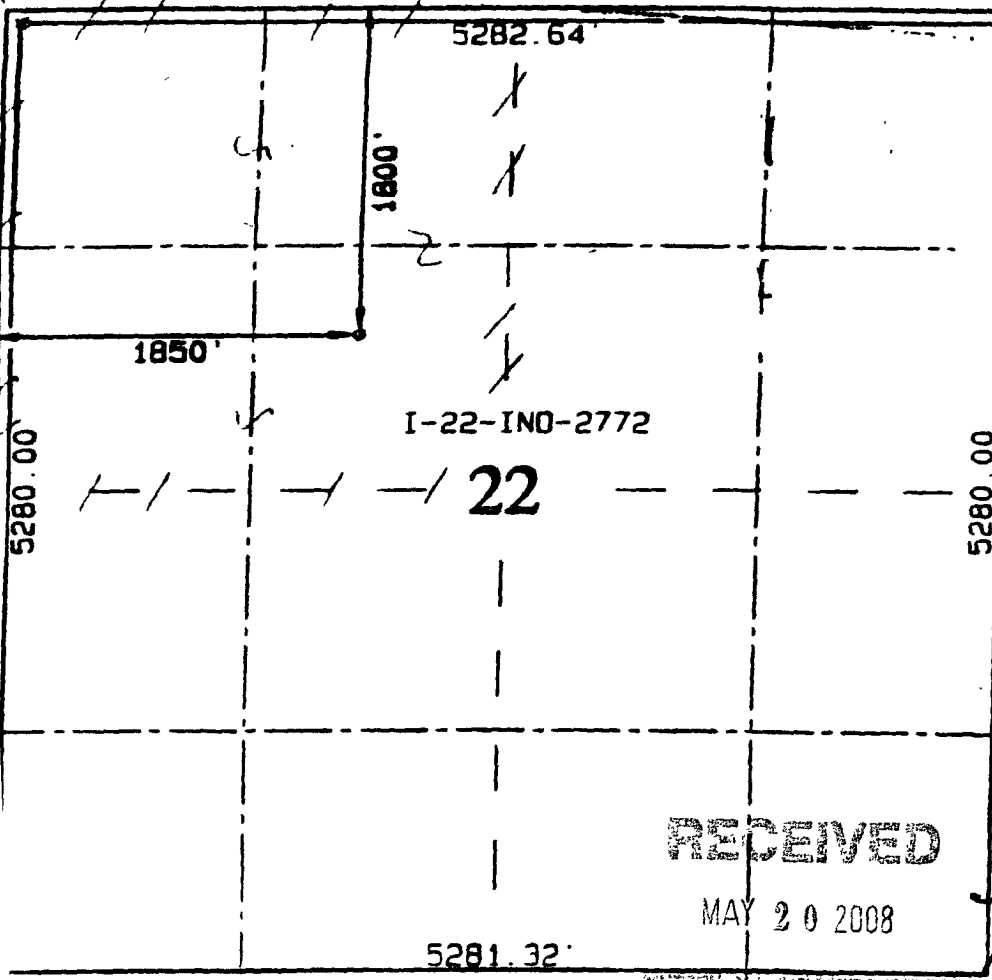
11 Bottom Hole Location If Different From Surface

U. of Sec. No.	Section	Township	Range	Lot No.	Feet from line	North/South Line	Feet from line	East/West Line	County

RCVD JUN 20 '08

Depositing herein 160'/160'/160'	Date of Initial OIL CONS. DIV. DIST. 3	Consolidation Code	Order No.
-------------------------------------	--	--------------------	-----------

NO ALLOWABLE WILL BE ASSIGNED TO THIS COMPLETION UNTIL ALL INTERESTS HAVE BEEN CONSOLIDATE
OR A NON-STANDARD UNIT HAS BEEN APPROVED BY THE DIVISION



17 OPERATOR CERTIFICATION

I hereby certify that the information contained herein is true and complete to the best of my knowledge and belief, and that this organization either owns a working interest or unleased mineral interest in the land including the proposed bottom hole location or has a right to drill this well at this location pursuant to a contract with an owner of such a mineral or working interest, or to a voluntary pooling agreement or a compulsory pooling order heretofore entered by the division.

Signature: Tracey N. Monroe Date: 6/19/08

Printed Name: Tracey N. Monroe

18 SURVEYOR CERTIFICATION

I hereby certify that the well location shown on this plat was plotted from field notes of actual surveys made by me or under my supervision, and that the same is true and correct to the best of my belief

November 20, 1997

Date of Survey

Signature and Seal of Professional Surveyor:

6857

Certificate Number

RECEIVED

MAY 20 2008

Dividing Section