

RECEIVED

JUN 26 2008

In Lieu of  
Form 3160  
(June 1990)

UNITED STATES  
DEPARTMENT OF INTERIOR  
BUREAU OF LAND MANAGEMENT  
Bureau of Land Management  
Farmington Field Office

FORM APPROVED  
Budget Bureau No. 1004-0135  
Expires: March 31, 1993

SUNDRY NOTICE AND REPORTS ON WELLS

Do not use this form for proposals to drill or to deepen or reentry to a different reservoir. Use "APPLICATION TO DRILL" for permit for such proposals

5. Lease Designation and Serial No.  
SF-078769
6. If Indian, Allottee or Tribe Name
7. If Unit or CA, Agreement Designation  
ROSA UNIT
8. Well Name and No.  
ROSA UNIT #31B
9. API Well No.  
30-039-26579
10. Field and Pool, or Exploratory Area  
BLANCO MV/BASIN DK
11. County or Parish, State  
RIO ARRIBA, NEW MEXICO

SUBMIT IN TRIPPLICATE

1. Type of Well  
Oil Well ☒ Gas Well ☐ Other ☐
2. Name of Operator  
WILLIAMS PRODUCTION COMPANY
3. Address and Telephone No.  
PO BOX 3102 MS 25-4, TULSA, OK 74101 (918) 573-3046
4. Location of Well (Footage, Sec., T., R., M., or Survey Description)  
570' 250' FNL, 515' FWL, NW/4 NW/4, SEC 17-T31N-R05W

CHECK APPROPRIATE BOX(s) TO INDICATE NATURE OF NOTICE, REPORT, OR OTHER DATA

TYPE OF SUBMISSION

TYPE OF ACTION

- ☒ Notice of Intent
- ☐ Subsequent Report
- ☐ Final Abandonment

- ☐ Plug & Abandonment
- ☐ Recompletion
- ☐ Plugging Back
- ☐ Casing Repair
- ☐ Altering Casing
- ☒ Other COMMINGLE

- ☐ Change of Plans
- ☐ New Construction
- ☐ Non-Routine Fracturing
- ☐ Water Shut-Off
- ☐ Conversion to Injection
- ☐ Dispose Water
- (Note: Report results of multiple completion on Well Completion or Recompletion Report and Log form.)

13. Describe Proposed or Completed Operations (Clearly state all pertinent details, and give pertinent dates, including estimated date of starting any proposed work. If well is directionally drilled, give subsurface locations and measured and true vertical depths for all markers and zones pertinent to this work.)\*

**OBJECTIVE:** Remove failed packer. Commingle MV and DK.

RCVD JUL 1 '08

OIL CONS. DIV.  
DIST. 3

- MIRU, kill, ND tree, & NU BOP's.
- POOH with tubing on both strings.
- Mill out packer.
- Clean out fill to PBTD @ 8025' MD.
- RIH and hang-off commingled string @ 7900' MD.
- ND BOP's & NU tree.
- Test well to make certain tubing is not plugged.
- Release rig.
- Return to production.

SEE ATTACHED FOR  
CONDITIONS OF APPROVAL

*DHe 2002 AZ*

14. I hereby certify that the foregoing is true and correct

Signed

*Rachel Lipperd*  
Rachel Lipperd

Title Engineering Technician

Date June 23, 2008

(This space for Federal or State office use)

Approved by

*Wayne*  
Title Pet. Eng.

Date

6-27-08

Conditions of approval, if any:

Title 18 U.S.C. Section 1001, makes it a crime for any person knowingly and willfully to make to any department or agency of the United States any false, fictitious or fraudulent statements or representations as to any matter within its jurisdiction.

NMOCD



Exploration & Production

**Production Allocation Recommendation**  
**ROSA UNIT #31B**  
**BLANCO MV/BASIN DK**

**WELLNAME:** Rosa Unity #31B

**LOCATION:** NW/4 NW/4 Section 17(D), T31N, R5W

**API No.:** 30-039-26579

**FIELD:** San Juan

**COUNTY:** Rio Arriba

**Date:** June 9, 2008

**Current Status:** The Rosa #31B is currently a dual completion well producing from the Dakota and Mesaverde formations. The packer unit at 6100' has failed. Packer repair would be mandatory. The Production Optimization and Enhancement Team recommends commingling this well instead.

**Commingle Procedure:**

- Mesa Verde tubing will be pulled
- Dakota tubing will be pulled
- Production packer will be removed
- Well will be cleaned out to PBTD
- A single string of 2-3/8" tubing will be run to ~7900'
- One set of wellhead facilities will be removed
- Well will be produced as a MV/DK commingle

**Allocation Method:** Historic production data from both zones on this well was gathered and analyzed. Monthly production data from April 2006 through March 2008 was considered as this represented a time when both zones appear to be free from loading problems and each zone was producing optimally. During this time the Mesa Verde contributed approximately 61.2% of the total production of the well, while the Dakota accounted for the remaining 38.8% during the same time span.

From April 2006 to March 2008

Total Production from well = 123330 Mcf

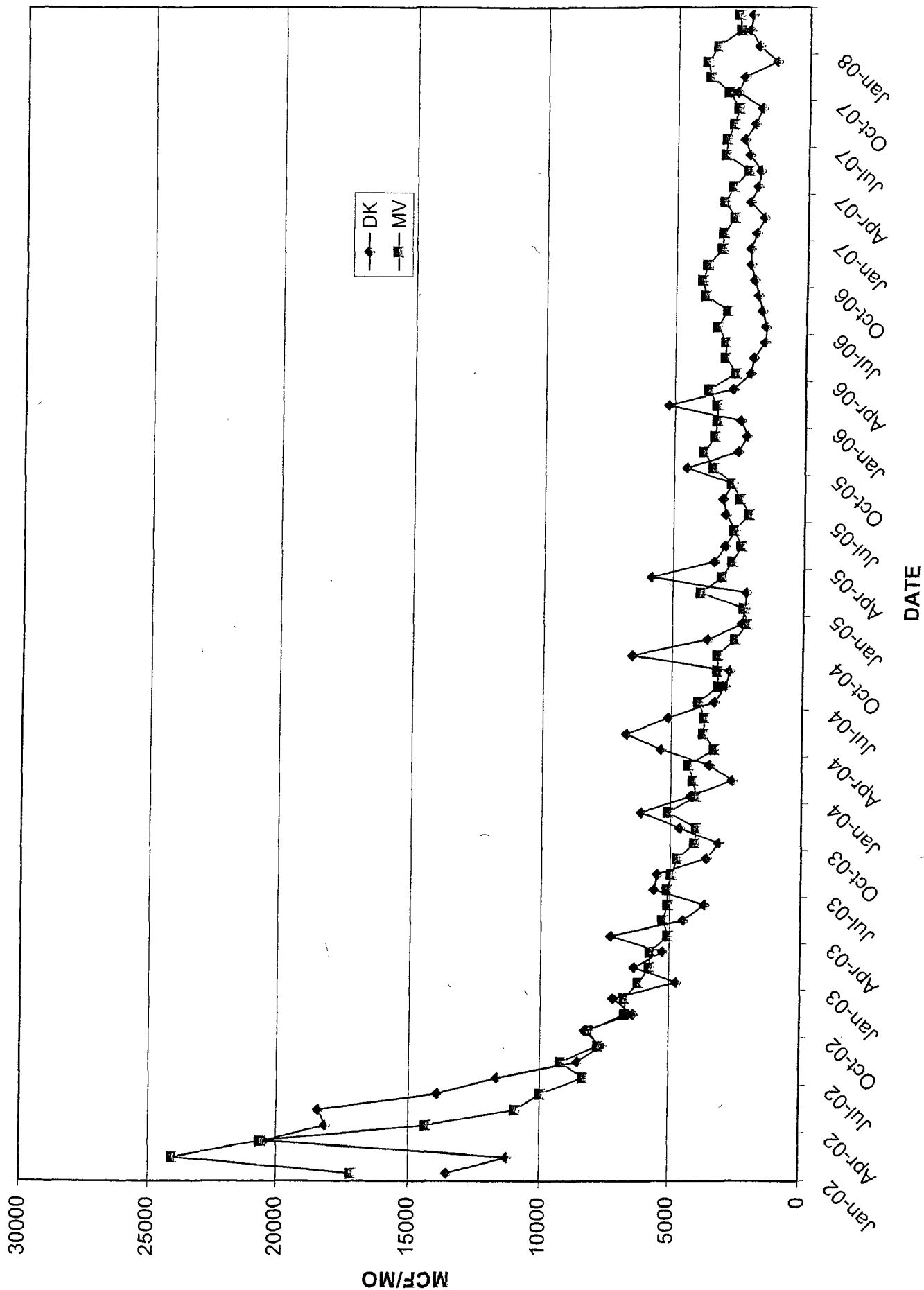
Total Production from MV = 75494 Mcf

Total Production from DK = 47835 Mcf

MV allocation = MV production / Total production = 75494 Mcf / 123330 Mcf = 61.2%

DK allocation = DK production / Total production = 47835 Mcf / 123330 Mcf = 38.8%

# MONTHLY PRODUCTION



# ROSA UNIT #31B BLANCO MV/BASIN DK

**Location:** 570' FNL, 515' FWL  
NW/4 NW/4 Section 17(D), T31N, R5W  
Rio Arriba Co., NM

**Elevation:** 6315' GR

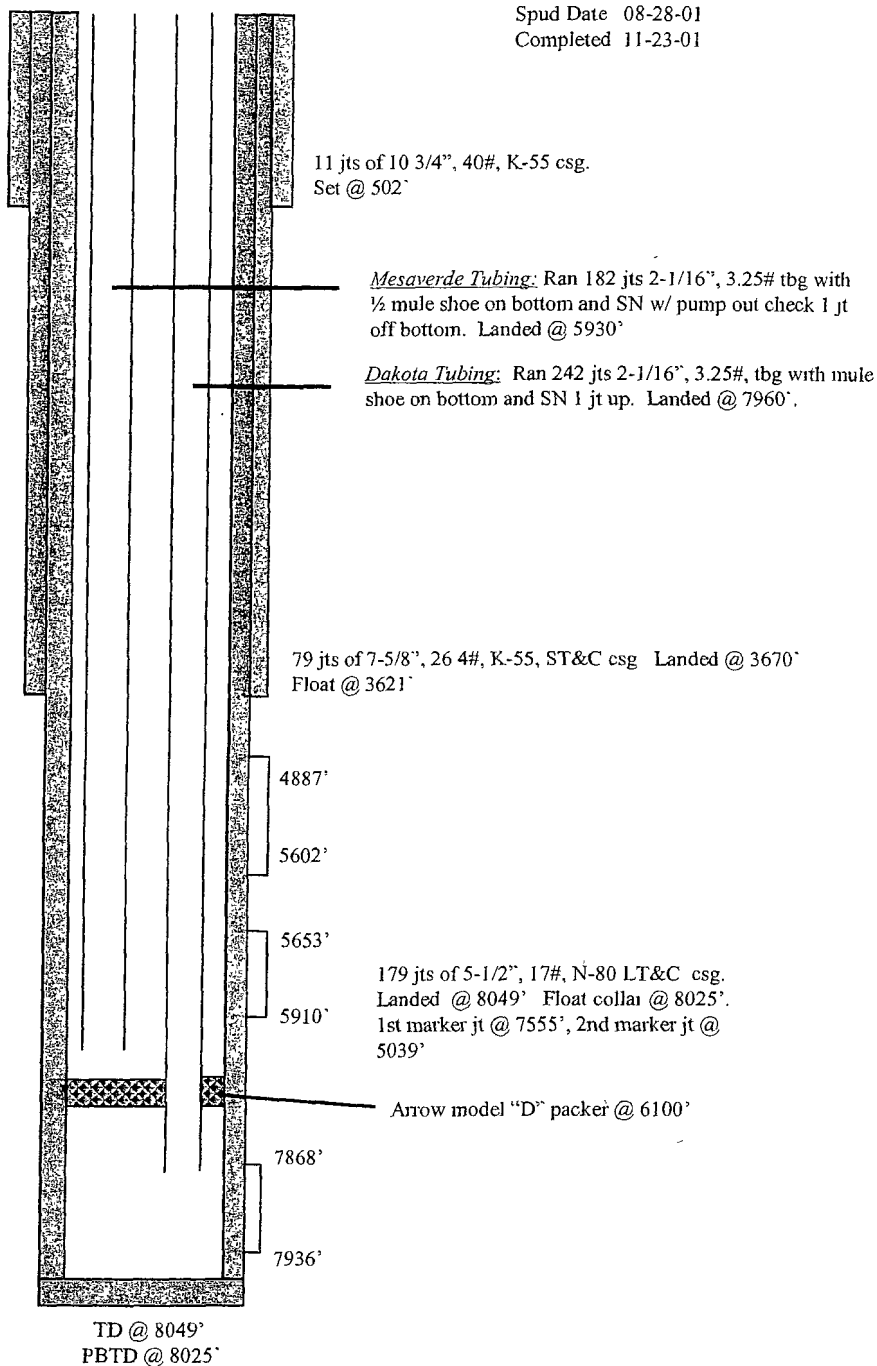
Spud Date 08-28-01  
Completed 11-23-01

<i>Tops</i>	<i>Depth</i>
Kirtland	2557'
Pictured Cliffs	3183'
Cliff House	5353'
Point Lookout	5652'
Mancos	6137'
Dakota	7869'

CliffHouse/Menefee 4887' - 5602' (34, 0.38" holes)  
80,000# of 20/40 sand in 1983 BBI's slick water.

Point Lookout 5653' - 5910' (26, 0.38" holes)  
80,000# of 20/40 sand in 1893 BBI's slick water.

Dakota 7868' - 7936' (17, 0.38" holes)  
80,000# of 20/40 Acfiac SB Excel resin coated proppant



HOLE SIZE	CASING	CEMENT	VOLUME	CMT TOP
14 3/4"	10 3/4"	460 sx	640 cu.ft.	surf
9 7/8"	7 5/8"	835 sx	1573 cu.ft.	surf
6 3/4"	5 1/2"	290 sx	578 cu.ft.	3100'

## **BLM CONDITIONS OF APPROVAL**

### ***WORKOVER AND RECOMPLETION OPERATIONS:***

- 1. A properly functioning BOP and related equipment must be installed prior to commencing workover and/or recompletion operations.**
- 2. If this well is in a Seasonal Closure Area, adhere to the closure requirements and timeframes.**
- 3. If casing repair operations are needed, obtain prior approval from this office before commencing repairs**

### ***SURFACE USE OPERATIONS:***

The following Stipulations will apply to this well unless a particular Surface Managing Agency or private surface owner has supplied to BLM and operator a contradictory environmental stipulation. The failure of operator to comply with these requirements may result in assessments or penalties pursuant to 43 CFR 3163.1 or 3163.2. A copy of these conditions of approval shall be present on location during construction, drilling and reclamation activity.

An agreement between operator and fee landowner will take precedence over BLM surface stipulations unless (in reference to 43 CFR Part 3160) 1) BLM determines that operator's actions will affect adjacent Federal or Indian surface, or 2) operator does not maintain well area and lease premises in a workmanlike manner with due regard for safety, conservation and appearance, or 3) no such agreement exists, or 4) in the event of well abandonment, minimal Federal restoration requirements will be required.

***STANDARD STIPULATIONS:*** All surface areas disturbed during work-over activities and not in use for production activities will be reseeded. This should occur in the first 90 days after completion of workover activities.

### ***SPECIAL STIPULATIONS:***

- 1. Pits will be fenced during workover operation.**
- 2. All disturbance will be kept on existing pad.**
- 3. All pits will be pulled and closed immediately upon completion of the workover activities.**
- 4. Pits will be lined with an impervious material at least 12 mils thick.**