

RECEIVED

In Lieu of
Form 3160-4
(July 1992)

UNITED STATES
DEPARTMENT OF THE INTERIOR
BUREAU OF LAND MANAGEMENT
Tingston Field (See other instructions on reverse side)

JUN 24 2008

SUBMIT IN
DUPLICATE

FORM APPROVED
OMB NO 1004-0137
Expires: February 28, 1995

WELL COMPLETION OR RECOMPLETION REPORT AND LOG*						5 LEASE DESIGNATION AND LEASE NO. NMSF-078765
						6 IF INDIAN, ALLOTTEE OR
1a	TYPE OF WELL OIL WELL <input checked="" type="checkbox"/> GAS WELL DRY OTHER					7 UNIT AGREEMENT NAME Rosa Unit
b	TYPE OF COMPLETION <input checked="" type="checkbox"/> NEW WELL WORKOVER DEEPEN PLUG BACK DIFF RESVR OTHER					
2	NAME OF OPERATOR WILLIAMS PRODUCTION COMPANY					8 FARM OR LEASE NAME, WELL NO Rosa Unit COM #60B
3	ADDRESS AND TELEPHONE NO P O Box 640, Aztec, NM 87410 (505) 634-4208					9 API WELL NO 30-045-34251
4.	LOCATION OF WELL (Report location clearly and in accordance with any State requirements)* At Surface: 275' FSL & 1450' FWL, sec 4, T31N, R6W At top production interval reported below : At total depth:					10. FIELD AND POOL, OR WILDCAT BASIN DAKOTA
					11 SEC, T, R, M, OR BLOCK AND SURVEY OR AREA SE/4 SW/4, Sec4, T31N, R6W	
		14 PERMIT NO	DATE ISSUED		12 COUNTY OR San Juan	13 STATE New Mexico
15 DATE SPUDDED 4-7-08	16 DATE TD REACHED 5-19-08	17. DATE COMPLETED (READY TO PRODUCE) 6-22-08		18 ELEVATIONS (DK, RKB, RT, GR, ETC)* 6416' GR	19 ELEVATION CASINGHEAD	
20 TOTAL DEPTH, MD & TVD 8225' MD		21 PLUG, BACK TD, MD & TVD 8168'		22 IF MULTICOMP, HOW MANY 3 *	23 INTERVALS DRILLED BY	ROTARY TOOLS x
24. PRODUCING INTERVAL(S), OF THIS COMPLETION - TOP, BOTTOM, NAME (MD AND TVD)* BASIN DAKOTA 7920' - 8052' * Mesaverde & Mancos to be completed at later date					25 WAS DIRECTIONAL SURVEY MADE YES	
26 TYPE ELECTRIC AND OTHER LOGS RUN					27 WAS WELL CORED NO	

28 CASING REPORT (Report all strings set in well)					
CASING SIZE/GRADE	WEIGHT, LB/FT	DEPTH SET (MD)	HOLE SIZE	TOP OF CEMENT, CEMENTING RECORD	AMOUNT PULLED
20", X-52	94#	421'	26"	750 SX - SURFACE	
10-3/4", K-55	45.5#	3666'	14-3/4"	1560 SX - SURFACE	
5-1/2", N-80	17.0#	8224'	6-3/4"	245 SX - 3650' (CBL)	

29 LINER RECORD				30 TUBING RECORD			
SIZE	TOP (MD)	BOTTOM (MD)	SACKS CEMENT*	SCREEN (MD)	SIZE	DEPTH SET (MD)	PACKER SET (MD)
7-5/8", K-55, 26.4#	3498'	6024'	400 sx TOC - 5900' (CBL)		2 875", 6.5#, J-55, EUE 8rd	8072"	none

31 PERFORATION RECORD (Interval, size, and number)				32 ACID, SHOT, FRACTURE, CEMENT SQUEEZE, ETC			
<u>Dakota</u> 7920' - 8052' Total of 63, 0.36" holes				DEPTH INTERVAL (MD)	AMOUNT AND KIND OF MATERIAL USED		
				7920' - 8052'	Fraced with 9900# LiteProp 108 14/40 followed w/3000# tempered LC 20/40		
					RCVD JUN 27 '08		
					OIL CONS. DIV.		

33 PRODUCTION		DIST 3					
DATE OF FIRST PRODUCTION		PRODUCTION METHOD (Flowing, gas lift, pumping-size and type of pump) Flowing				WELL STATUS (PRODUCING OR SI) SI - waiting on C-104 approval	
DATE OF TEST 6-20-08	TESTED 10 hr	CHOKE SIZE 2"	PROD'N FOR TEST PERIOD	OIL - BBL	GAS - MCF	WATER - BBL	GAS-OIL RATIO
FLOW TBG PRESS 0	CASING PRESSURE 16.0 oz	CALCULATED 24-HOUR RATE		OIL - BBL	GAS - MCF 615 p/day	WATER - BBL	OIL GRAVITY-API (CORR)

34 DISPOSITION OF GAS (Sold, used for fuel, vented, etc) TO BE SOLD TEST WITNESSED BY AI Rector

35 LIST OF ATTACHMENTS SUMMARY OF POROUS ZONES, WELLBORE DIAGRAM

36 I hereby certify that the foregoing and attached information is complete and correct as determined from all available records

SIGNED Larry Higgins TITLE Drlg COM DATE 6-24-08

NMOCD 8

FARMINGTON FIELD OFFICE
5r

JUN 25 2008

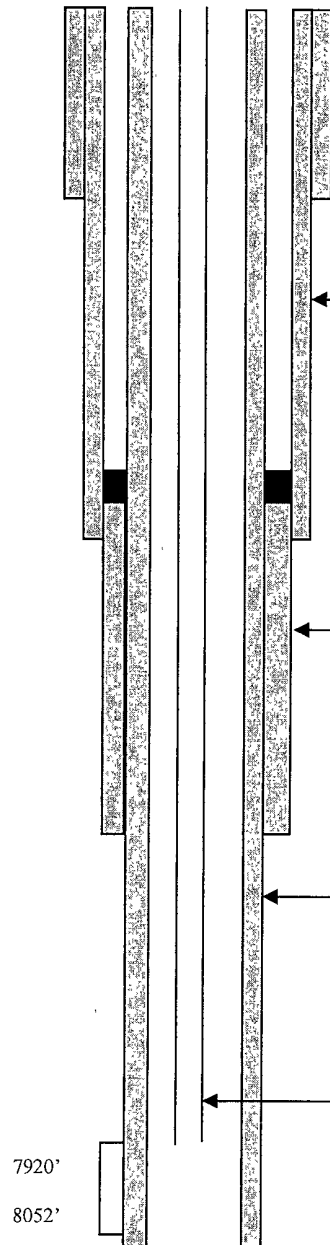
37 SUMMARY OF POROUS ZONES (Show all important zones of porosity and contents thereof; cored intervals, and all drill-stem, tests, including depth interval tested, cushion used, time tool open, flowing and shut-in pressures, and recoveries)					38 GEOLOGIC MARKERS			
FORMATION	TOP	BOTTOM	DESCRIPTION, CONTENTS, ETC.		NAME	TOP		
						NAME	MEASURED DEPTH	TRUE VERTICAL DEPTH
						KIRTLAND	2485'	
						FRUITLAND COAL	2941'	
						PICTURED CLIFFS	3200'	
						CLIFFHOUSE	5391'	
						MENEFEE	5433'	
						POINT LOOKOUT	5680'	
						MANCOS	6015'	
						DAKOTA	7920'	

ROSA UNIT COM #60B
BLANCO MESAVERDE/BASIN MANCOS/BASIN DK

Location: 275' FSL, 1450' FWL
 SE/4 SW/4 Section 4(N), T31N, R6W
 San Juan Co., NM
Elevation: 6416' GR
API: 30-045-34251

Spud Date 4-7-2008
Completed 6-22-2008 (DK)
ID'd: 00-00-0000

<i>Tops</i>	<i>Depth</i>
Ojo Alamo	2369'
Kirtland	2485'
Pictured Cliffs	3200'
Cliff House	5391'
Point Lookout	5680'
Mancos	6015'
Dakota	8920'



Mesa Verde
 To be completed at later date

Mancos:
 To be completed at later date

Dakota: 7920' - 8052' (63, 0 36" holes)
 Frac w/9900# LP108 14/40 followed
 w/3000# tempered LC 20/40

TD @ 8225'
 PBTD @ 8168'

HOLE SIZE	CASING	CEMENT	VOLUME	CMT TOP
26"	20"	750 sx	1058 cu.ft	Surface
14-3/4"	10-3/4"	1560 sx	3107 cu.ft	Surface
9-7/8"	7-5/8"	400 sx	856 cu.ft	5900' (CBL)
6 3/4"	5 1/2"	245 sx	558 cu.ft.	3650' (CBL)