

DISTRICT I  
1625 N. French Dr., Hobbs, N.M. 88240

DISTRICT II  
1301 W. Grand Ave., Artesia, N.M. 88210

DISTRICT III  
1000 Rio Brazos Rd., Aztec, N.M. 87410

DISTRICT IV  
1220 South St. Francis Dr., Santa Fe, NM 87505

State of New Mexico  
Energy, Minerals & Natural Resources Department

OIL CONSERVATION DIVISION

1220 South St. Francis Dr.  
Santa Fe, NM 87505

Form C-102

Revised October 12, 2005

Submit to Appropriate District Office

State Lease - 4 Copies

Fee Lease - 3 Copies

RCVD JUL 11 '08  
AMENDED REPORT

WELL LOCATION AND ACREAGE DEDICATION PLAT OIL CONS. DIV.

<sup>1</sup> API Number 30-039-30195	<sup>2</sup> Pool Code 72400	<sup>3</sup> Pool Name PICTURED CLIFFS/EAST BLANCO DIST. 3
<sup>4</sup> Property Code 34022	<sup>5</sup> Property Name JICARILLA 464-31	<sup>6</sup> Well Number 233
<sup>7</sup> OGRID No. 013925	<sup>8</sup> Operator Name BLACK HILLS GAS RESOURCES	<sup>9</sup> Elevation 7015

<sup>10</sup> Surface Location

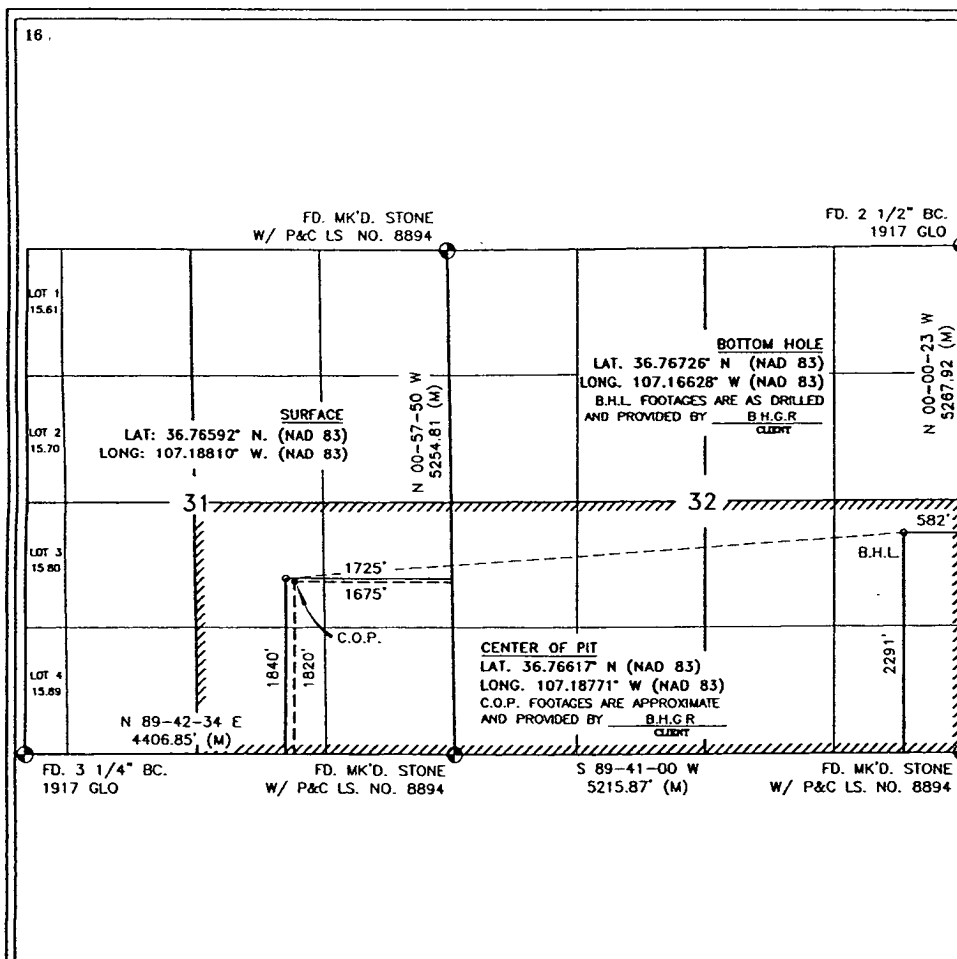
UL or lot no.	Section	Township	Range	Lot Idn	Feet from the	North/South line	Feet from the	East/West line	County
J	31	30-N	3-W		1840	SOUTH	1725	EAST	RIO ARRIBA

<sup>11</sup> Bottom Hole Location If Different From Surface

UL or lot no.	Section	Township	Range	Lot Idn	Feet from the	North/South line	Feet from the	East/West line	County
I	32	30-N	3-W		2291	SOUTH	582	EAST	RIO ARRIBA

<sup>12</sup> Dedicated Acres SE/4 SEC. 31 = 156.28 AC S/2 SEC. 32 = 316.32 AC	<sup>13</sup> Joint or Infill	<sup>14</sup> Consolidation Code	<sup>15</sup> Order No. NSL-4355
--	-------------------------------	----------------------------------	-------------------------------------

NO ALLOWABLE WILL BE ASSIGNED TO THIS COMPLETION UNTIL ALL INTERESTS HAVE BEEN CONSOLIDATED OR A NON-STANDARD UNIT HAS BEEN APPROVED BY THE DIVISION



17

**OPERATOR CERTIFICATION**

I hereby certify that the information contained herein is true and complete to the best of my knowledge and belief, and that this organization either owns a working interest or unleased mineral interest in the land including the proposed bottom hole location or has a right to drill this well at this location pursuant to a contract with an owner of such a mineral or working interest, or to a voluntary pooling agreement or a compulsory pooling order heretofore entered by the division.

*Mike Pippin* 2-11-08  
Signature Date

MIKE PIPPIN  
Printed Name

18

**SURVEYOR CERTIFICATION**

I hereby certify that the well location shown on this plat was plotted from field notes of actual surveys made by me or under my supervision, and that the same is true and correct to the best of my knowledge and belief

SEPTEMBER 15 2006  
Date of Survey

ROY A. RUSH  
Signature and Seal of Professional Surveyor.

8894  
8894  
8894

Certificate Number