

AUG 01 2008

Bureau of Land Management
Farmington Field Office

11. County and State
Rio Arriba Co., NM

DIST. 3

NMOCB

District I

1625 N. French Dr., Hobbs, NM 88240

District II

1301 W. Grand Avenue, Artesia, NM 88210

District III

1000 Rio Brazos Rd., Aztec, NM 87410

District IV

1220 S. St. Francis Dr., Santa Fe, NM 87505

State of New Mexico
Energy, Minerals & Natural Resources Department
OIL CONSERVATION DIVISION
1220 South St. Francis Dr.
Santa Fe, NM 87505

Form C-102

Revised October 12, 2005

Submit to Appropriate District Office

State Lease - 7 Copies

Fee Lease - 3 Copies

☐ AMENDED REPORT**WELL LOCATION AND ACREAGE DEDICATION PLAT**

¹ API Number 30-039-30387	² Pool Code 72319	³ Pool Name BLANCO MESAVERDE
⁴ Property Code 7620	⁵ Property Name VALDEZ	⁶ Well Number 7A
⁷ OGRID No. 14538	⁸ Operator Name BURLINGTON RESOURCES OIL & GAS COMPANY LP	⁹ Elevation 7338

¹⁰ SURFACE LOCATION

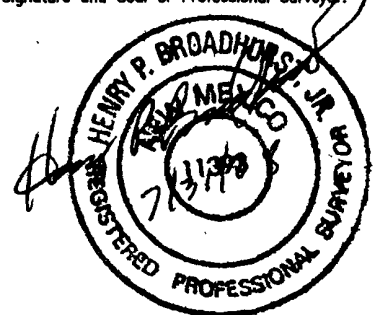
UL or lot no.	Section	Township	Range	Lot Idn	Feet from the	North/South line	Feet from the	East/West line	County
F	28	28-N	4-W		2030	NORTH	1385	WEST	RIO ARRIBA

¹¹ Bottom Hole Location If Different From Surface

UL or lot no.	Section	Township	Range	Lot Idn	Feet from the	North/South line	Feet from the	East/West line	County
F									

¹² Dedicated Acres 320.0 (W/2)	¹³ Joint or Infill	¹⁴ Consolidation Code	¹⁵ Order No.
--	-------------------------------	----------------------------------	-------------------------

NO ALLOWABLE WILL BE ASSIGNED TO THIS COMPLETION UNTIL ALL INTERESTS HAVE BEEN
CONSOLIDATED OR A NON-STANDARD UNIT HAS BEEN APPROVED BY THE DIVISION

¹⁶ N 89°10'50" E 5443.1' (R) 2030' 1385' WELL FLAG NAD 83 LAT: 36.633667° N LONG: 107.260117° W NAD 27 LAT: 36°38.019536' N LONG: 107°15.571105' W W/2 DEDICATED ACREAGE USA NM-03863 SECTION 28 T-28-N, R-4-W N 0°05'54" E	5210.2' (R)		¹⁷ OPERATOR CERTIFICATION I hereby certify that the information contained herein is true and complete to the best of my knowledge and belief, and that this organization either owns a working interest or unleased mineral interest in the land including the proposed bottom hole location or has a right to drill this well at this location pursuant to a contract with an owner of such a mineral or working interest, or to a voluntary pooling agreement or a compulsory pooling order heretofore entered by the division. <i>Crystal Tafoya 8/1/08</i> Signature Crystal Tafoya Printed Name Regulatory Technician Title and E-mail Address August 1, 2008 Date	
				¹⁸ SURVEYOR CERTIFICATION I hereby certify that the well location shown on this plat was plotted from field notes of actual surveys made by me or under my supervision, and that the same is true and correct to the best of my belief. Date of Survey: 7/02/08 Signature and Seal of Professional Surveyor:  Certificate Number: NM 11393

BURLINGTON RESOURCES OIL & GAS COMPANY LP

VALDEZ 7A

2030' FNL, 1385' FWL

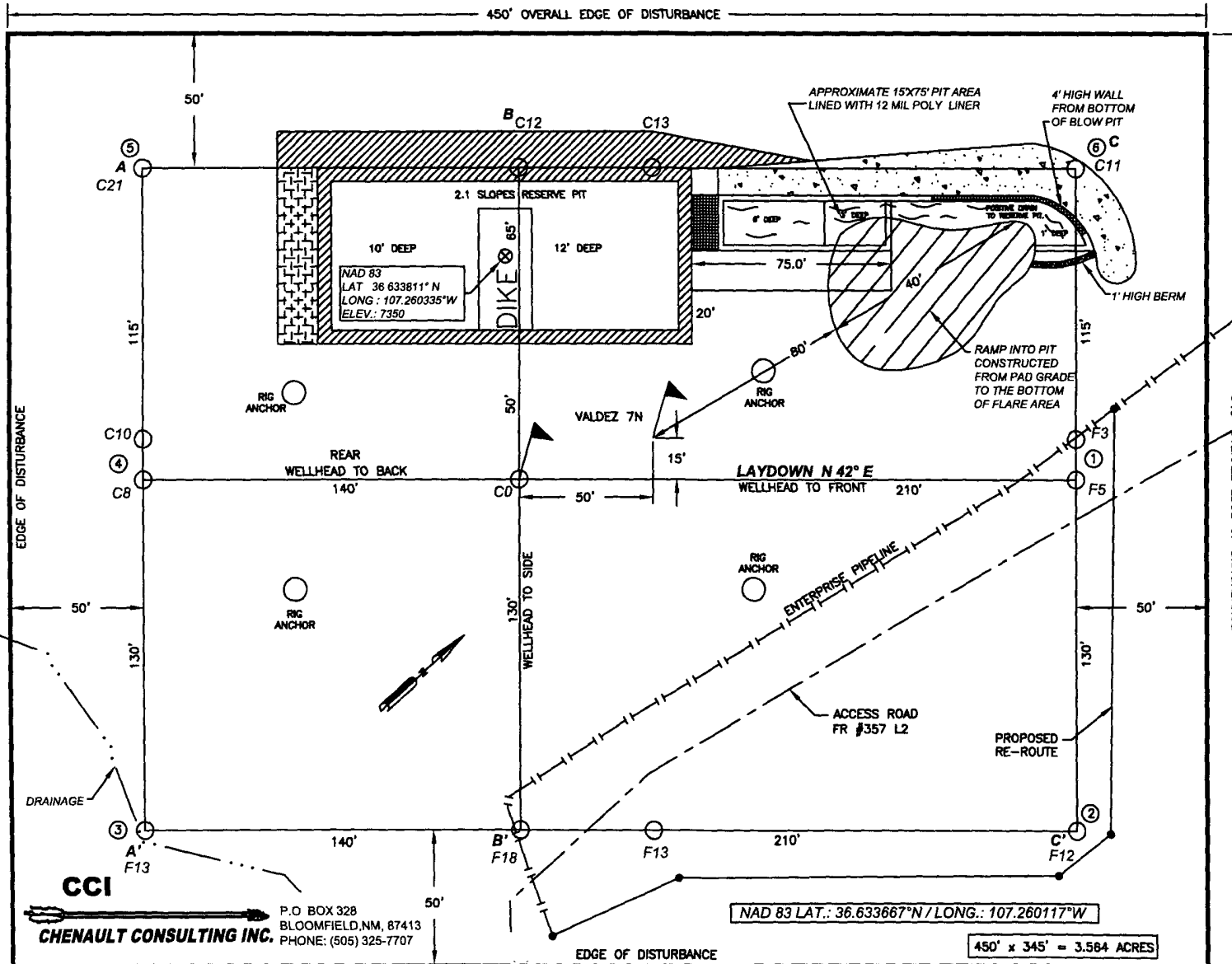
SECTION 28, T-28-N, R-4-W, N.M.P.M.,

RIO ARriba COUNTY, NEW MEXICO

GROUND ELEV.: 7338 NAVD88

DATE: JULY 2, 2008

NO NEW ACCESS ROAD



NOTES:

1. RESERVE PIT DIKE: TO BE 8' ABOVE DEEP SIDE (OVERFLOW-3' WIDE AND 1' ABOVE SHALLOW SIDE).
2. C.C.I. SURVEYS IS NOT LIABLE FOR UNDERGROUND UTILITIES OR PIPELINES. CONTRACTOR SHOULD CALL ONE-CALL FOR LOCATION OF ANY MARKED OR UNMARKED BURIED PIPELINES OR CABLES ON WELL PAD AND OR ACCESS ROAD AT LEAST TWO (2) WORKING DAYS PRIOR TO CONSTRUCTION.

BURLINGTON RESOURCES OIL & GAS COMPANY LP

VALDEZ 7A

2030' FNL, 1385' FWL

SECTION 28, T-28-N, R-4-W, N.M.P.M.,

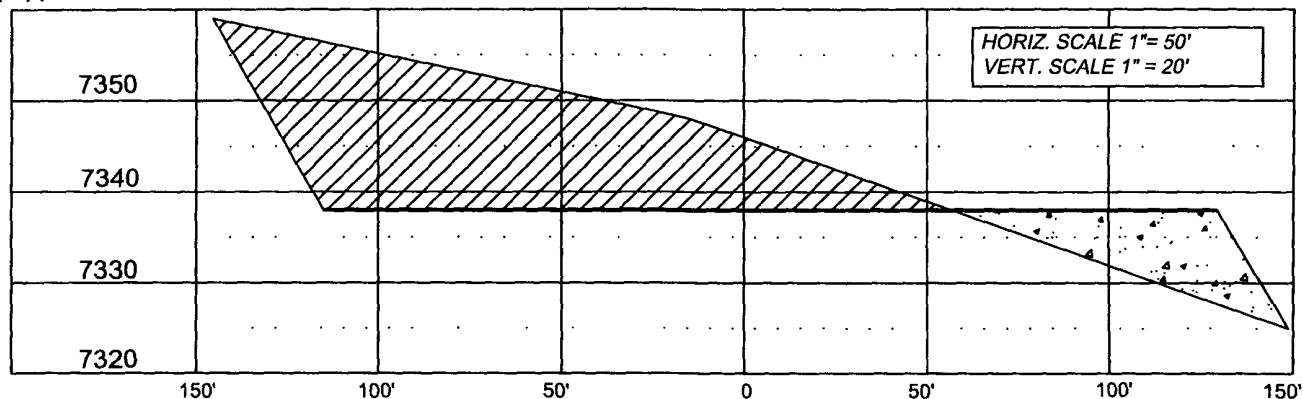
RIO ARriba COUNTY, NEW MEXICO

ELEV.: 7338 NAVD88

NO NEW ACCESS

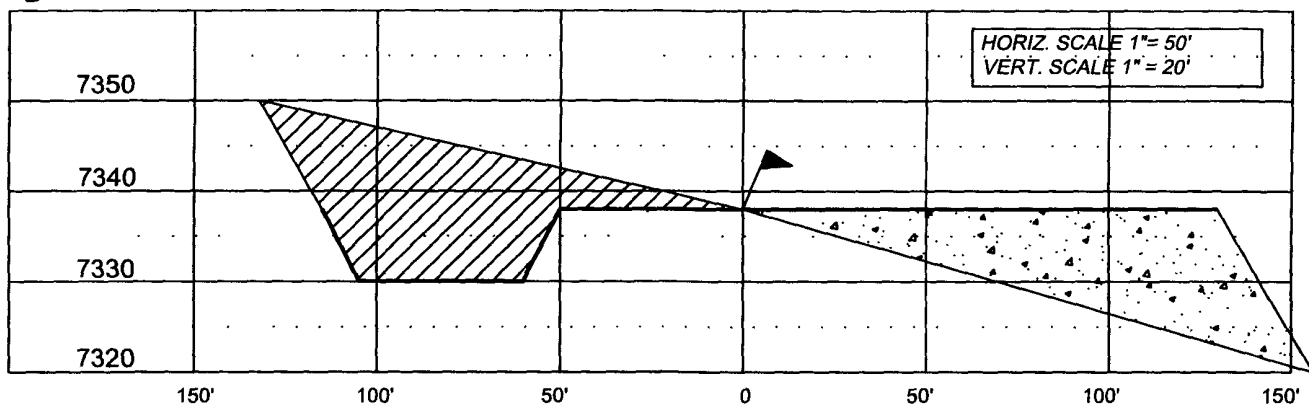
A - A'

C/L



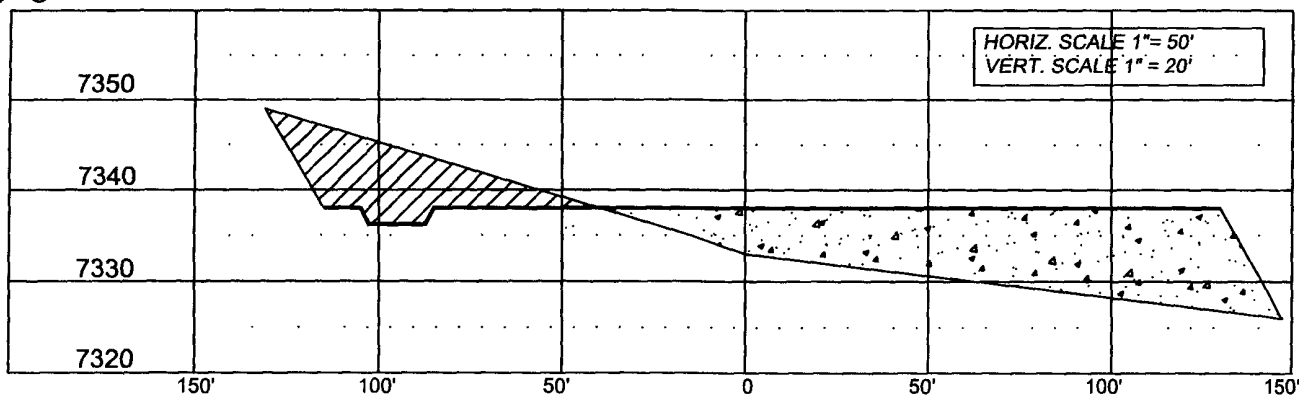
B - B'

C/L



C - C'

C/L



NOTE: CCI IS NOT LIABLE FOR UNDERGROUND UTILITIES OR PIPELINES

CONTRACTOR SHOULD CALL ONE-CALL FOR LOCATION OF ANY MARKED OR UNMARKED BURIED PIPELINES OR CABLES ON WELL PAD AND OR ACCESS ROAD PRIOR TO CONSTRUCTION.

REVISIONS

NO	DESCRIPTION	REVISED BY	DATE
1	ISSUE FOR REVIEW	TJR	12/14/06
2	WELL MOVE	TJR	7/02/08

CCI

CHENAULT CONSULTING INC.

P.O. BOX 328
BLOOMFIELD, NM, 87413
PHONE: (505) 325-7707