

UNITED STATES
DEPARTMENT OF INTERIOR
BUREAU OF LAND MANAGEMENT

JUL 31 2008

FORM APPROVED
Budget Bureau No 1004-0135
Expires. March 31, 1993

SUNDRY NOTICE AND REPORTS ON WELLS

Do not use this form for proposals to drill or to deepen or reentry to a different reservoir Use "APPLICATION TO DRILL" for permit for such proposals

Lease Designation and Serial No.
NMSF-078765

6. If Indian, Allottee or Tribe Name

7. If Unit or CA, Agreement Designation
Rosa Unit

1. Type of Well
Oil Well Gas Well X Other

8. Well Name and No.
Rosa Unit #88C

2. Name of Operator
WILLIAMS PRODUCTION COMPANY

9. API Well No.
30-045-34458

3. Address and Telephone No
PO Box 640 Aztec, NM 87410-0640

10. Field and Pool, or Exploratory Area
BLANCO MV /BASIN DK

4. Location of Well (Footage, Sec , T., R , M , or Survey Description)
Surface 1060' FNL & 2230' FEL Sec 8, T31N, R6W NMPM
BHL 330' FNL & 2310' FWL Sec 8< T31N, R6W

11. County or Parish, State
San Juan, New Mexico

CHECK APPROPRIATE BOX(s) TO INDICATE NATURE OF NOTICE, REPORT, OR OTHER DATA

TYPE OF SUBMISSION

TYPE OF ACTION

Notice of Intent

Abandonment

Change of Plans

X Subsequent Report

Recompletion

New Construction

Final Abandonment

Plugging Back

Non-Routine Fracturing

Casing Repair

Water Shut-Off

Altering Casing

Conversion to Injection

X Other Completion Sundry

Dispose Water

(Note. Report results of multiple completion on Well Completion or Recompletion Report and Log form)

07-15-2008

Recap: RU mast truck over well, RU BWWC, RIH w/ CBL/Gamma Ray log, tag @ 8037', pull to surface, locate TOC @ 5690', RD WL crew & mast truck, SD & wait for Geologist to look @ logs.

07-16-2008

Recap: SD & wait for Geologist to look @ logs.

SEE ATTACHED FOR
CONDITIONS OF APPROVAL

07-18-2008

Recap: TRVL to Rosa #60B, HTGSM, Move rig to loc, spot in rig ramp & all surface equipment, RU over well, was hard to get rig on ramp due to existing well in front of ramp, NDWH & NUBOP stack, RU rig floor, load well w/ 3 bbls wtr & Psi test casing @ 1500 psi for 30 mins w/ no leak off, MU 4 3/4" bit & B/S, tally, rabbit & TIH w/ 123 jts tbg, SIWFN

07-19-2008

Recap: Tally, rabbit & TIH w/ 127 jts tbg, (250 total jts) & tag @ 8040', RU 2.5" PS & break circ w/ rig pump, DO 5' of soft cmt to FC @ 8045', DO FC & 35' of hard cmt to 8080', circ WB clean, psi test csg & pipe rams @ 1500 psi for 30 mins w/ no leak off, LD 1 jt tbg & RD 2.5" PS, TOH w/ bit, SIWFN.

RCVD AUG 12 '08

OIL CONS. DIV.

07-20-2008

Recap: SU rig, RU Schlumberger WL crew, run Pulse Neutron Density log, RD WL crew & SIWFN.

14 I hereby certify that the foregoing is true and correct

DIST. 3

Signed

Larry Higgins

Title Drilling C.O.M.

Date 7-31-08

(This space for Federal or State office use)

Approved by

Troy L. Salyers

Title

Petroleum Engineer

Date

8-6-08

Conditions of approval, if any

See attached COA

Title 18 U.S.C. Section 1001, makes it a crime for any person knowingly and willfully to make to any department or agency of the United States any false, fictitious or fraudulent statements or representations as to any matter within its jurisdiction

NMOCD

Page 2

07-21-2008

Recap: MU 2 7/8" coupler & TIH w/ 250 jts tbg & one 14' pup jt, set tbg @ 8066', RU BJ Serv, psi test lines, psi test csg & pipe rams @ 3500 psi, tested good, spot 6 bbls 15% HCL acid across DK perf interval, RD BJ Serv & TOH w/ tbg, RD rig floor, NDBOP stack & NU frac Y, RU BWWC, **perf DK bottom up from 7940' - 8069' w/ 500 psi on csg, 3 SPF, 120 degree phasing w/ 3 3/8" SFG, .34" Dia, 21" Pen & 12 Grm Chgs, 60 total holes, all shots fired, RD WL crew, SIWFN.**

07-22-2008

Recap: Finish RU BJ Serv, psi test lines @ 6000 psi, BD DK @ 4000 psi, est rate @ 29 bpm @ 3150 psi, BO DK @ 3500 psi w/ 24 bbls 15% HCL acid & 100 Bio Balls, SD & let balls dissolve, **frac DK w/ 9900 lbs LP 108 14/40 @ 0.05, 0.1, 0.2 & 0.3 ppg, follow w/ 3480 lbs Tempered LC 20/40 @ 1.5 ppg, prop carried in slick wtr, MIR = 50 bpm, AIR = 49.5 bpm, MTP = 3476 psi, ATP = 3328 psi, ISIP = 2690 psi, 15 mins = 2474 psi, total wtr = 1872 bbls, total FRW-14 = 89 gals, RD BJ & ND frac Y & NUBOP stack, RU choke manifold to 2" csg, flow well thru 1/8" choke, check for sand & psi every 2 hrs.**

07-23-2008

Recap: Flow well thru 1/8" choke, @ 0 00 = 1000 psi, csg psi = 375 psi, blow well down thru 2" open line, MU 2.875" Exp chk w/ 1/2 M/S, one jt 2 7/8" tbg & one 2.28" S/N, TIH w/ 130 jts tbg & set tbg @ 4250', RU PS, unload wtr off well w/ air only @ 1350 psi, rets = hvy wtr w/ no sand, run bucket test @ 13:00 = 23 bph, RD PS, start to TIH w/ tbg & tbg slips broke, try to repair but did not have proper parts, send rig crew home & unload wtr off well, run bucket test @ 17:00 hrs = 2.3 bph wtr w/ no sand, SD air, NF well thru blooie line w/ 12' flare, well flowing light stream.

07-24-2008

Recap: NF well w/ 12' flare, well flowed light wtr, unload wtr off well @ 900 psi, unload for 2 hrs, try to TIH & break assist on rig locked up, call mech & blow on well for 4 hrs, TIH w/ 56 jts tbg, unload wtr off well for 2 hrs @ 1900 psi, RD PS & TIH w/ 63 jts tbg & set bit @ 8021', could not lift well to surface, TOH w/ 30 jts tbg & unload well @ 1550 psi, unload for 2 hrs, TIH w/ 30 stds & unload well @ 1500 psi, PU 3 jts tbg & CO to 8080', LD 6 jts tbg & set tbg @ 7894', unload wtr off well for 2 hrs, run bucket test @ 23:30 = 6.3 bph wtr, SD air & NF well w/ 18' flare.

07-25-2008

Recap: NF well w/ 18' flare, @ 12:30 flare decreased to appr 10' in height, well is not flowing any wtr on its own, unload wtr off well @ 750 psi, rets = appr 12 bbl slug, run bucket test @ 10:00 = 8.3 bph wtr w/ no sand, @ 12:00 = 4.4 bph @ 14:00 = 2.0 bph wtr w/ no sand, SD air & try to pitot, did not register any pressure on gauge, will try tomorrow w/ new gauge, NF well & evap pit w/ appr 10' flare, well is not unloading any wtr on its own.

07-26-2008

Recap: NF well w/ appr 10' flare, evap pit, unload wtr off well w/ air only @ 700 psi, run bucket test @ 12:00 = 2.3 bph wtr w/ no sand, SD air & let well flow 1 hr, FLOW TEST: Duration = 1 hr, Test Method = 1 hr, MCF/D = 253 mcf/d, Gas Psi = 3.0 oz on pitot Gauge, Gas Type = dry, Gas Disposition = non flaring, Choke Size = 2" open line, NF well & evap pit w/ 10' flare.

07-27-2008

Recap: NF well & evap pit w/ 10' flare, unload wtr off well @ 600 psi, rets = 8 bbl slug of wtr, run bucket test @ 12:00 = 1.5 bph wtr w/ no sand, SD air & flow well to pit thru blooie line to get air off well, FLOW TEST: Duration = 1 hr, Test Method = pitot, MCF/D = 250 mcf/d, Csg Psi = 3.0 oz on pitot gauge, Tbg Psi = 0 psi, Gas Type = dry, Gas Disposition = non flaring, Choke size = 2" open line, NF well & evap pit w/ 10' flare.

07-28-2008

Recap: NF well & evap pit w/ 10' flare, TIH w/ 5 jts tbg & tag @ 8050', air equip is down & will not start, call for mech, TOH w/ 21 jts tbg, tbg is hanging up & dragging appr 28,000 over stg wt, replace computer brain on AP, unload wtr off well @ 1000 psi rets = appr 15 bbl slug of wtr, TIH w/ 7 stds tbg, dragging on the way down, unload wtr off well @ 500 psi, work pipe w/ PS, PU 6 jts tbg & tag @ 8020', break circ w/ 12 bph a/s mist, rets = light wtr w/ light yellow sand, CO to 8080', rets = lt wtr w/ light yellow sand, run a 4 bbl sweep every 20 mins & work pipe until it was free, circ clean & dry up WB, RD PS & TOH w/ 3 stds tbg, NF well & evap reserve pit w/ 10' flare, well is not flowing any wtr on its own.

07-29-2008

Recap: NF well & evap pit w/ 10' flare, unload wtr off well while we were @ safety mtg, tie back to sgl line, TOH w/ 80 stds tbg, pulling 25,000 over SW, tbg became free @ 2950', circ well w/ 12 bph a/s mist & pump sweeps to CO S curve, TOH & inspect BHA, TIH w/ tbg, tbg is dragging very light, tag @ 8080', unload wtr off well @ 1500 psi, pump 5 bbl sweeps, circ well clean, dry up WB, TOH w/ 3 stds tbg, tbg dragging 18,000 lbs over SW, NF well & evap pit w/ 10' flare.

07-30-2008

Recap: NF well & vap pit w/ 10' flare, TRVL to loc, HTGSM, TIH w/ 3 stds tbg & tag @ 8080', LD 1 jt tbg & unload wtr off well @ 1000 psi, **land well @ 8058' KB as follows, one 2.875" Exp Chk-1/2 M/S, one jt 2.875", J-55, 6.50#, EUE tbg, one 2.28" S/N, 249 jts 2.875", J-55, 6.50#, EUE tbg, S/N set @ 8025', RD rig floor, NDBOP stack & NUWH & test @ 3000 psi, tested good, pump out Exp Chk @ 1950 psi, unload wtr & air off well, RD rig & all surface equip, prepare to move in the A.M.**

ROSA UNIT #88C
BLANCO MV/BASIN DK

Spud. 6-9-08

Completed: 7/30/08

1st Delivery: 0/0/00

Surface Location:

1060' FNL and 2230' FEL
NW/4 NE/4 Sec 8(B), T31N, R06W
San Juan, NM

Bottom Hole Location:

330' FNL and 2310' FWL
NE/4 NW/4 Sec 8(C), T31N, R06W
San Juan, NM

Elevation: 6218' GR

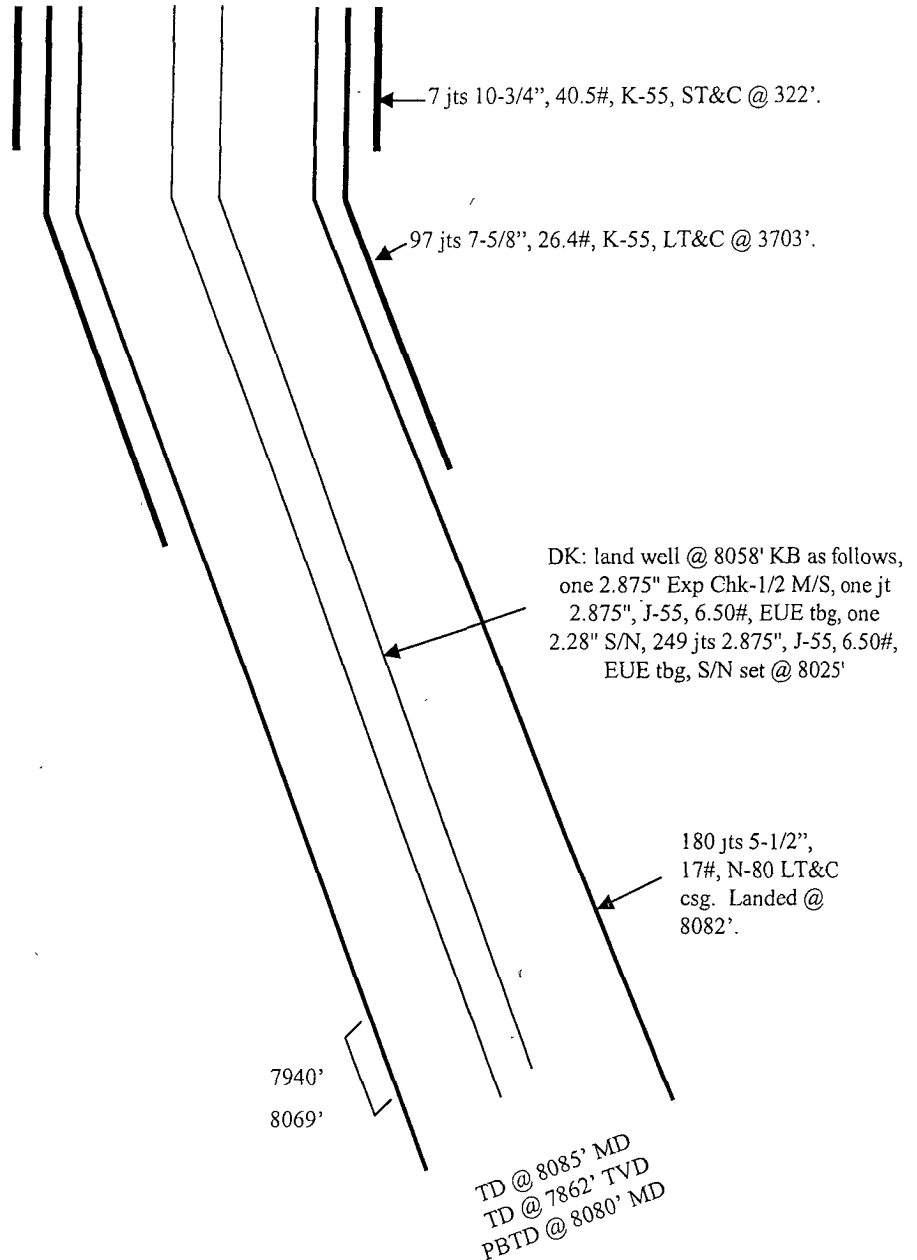
API # 30-045-34458

| Top | MD Depth |
|-----------------|-------------|
| Pictured Cliffs | 3220' |
| Lewis | 3542' |
| Cliffhouse Ss. | 5427' |
| Menefee | 5473' |
| Point Lookout | 5700' |
| Mancos | 6234' |
| Dakota | 7957' |

Stimulation.

NOTE: Dakota only completed at this time ✓

Dakota: 7940' – 8069' (60, 0.34" holes)
Frac with 9900# Lite Prop 108 14/40,
follow with 3480# Tempered LC 20/40.



| | | | | |
|---------|----------------|---------|-------------|---------|
| 14-3/4" | 10-3/4", 40.5# | 250 sxs | 363 cu.ft. | Surface |
| 9-7/8" | 7-5/8", 26.4# | 850 sxs | 1482 cu.ft. | Surface |
| 6-3/4" | 5-1/2", 17# | 220 sxs | 494 cu.ft. | 5690' |

CONDITION OF APPROVAL

Operator: Williams Production Company
Lease No.: NMSF-078765
Well Name: Rosa Unit #88C
Well Location: Sec. 08, T31N, R06W; 1060' FNL & 2230' FEL

The 7 5/8 in intermediate casing shoe was set at 3703' TMD. Cement behind the 5 1/2 in production casing was found at 5690' TMD leaving approximately 2000' of open interval. The gas producing Chacra formation top is estimated at 3989' TVD (4220' TMD). Therefore, since this formation lies within the open interval, the operator will be required to properly isolate the off-setting production in the Chacra formation from the Lewis Shale formation upon abandonment of this wellbore.