

UNITED STATES
DEPARTMENT OF INTERIOR
BUREAU OF LAND MANAGEMENT

RECEIVED

AUG-04 2008

FORM APPROVED
Budget Bureau No. 1004-0135

Bureau of Land Management

SUNDRY NOTICE AND REPORTS ON WELLS
Do not use this form for proposals to drill or to deepen or reentry to a different reservoir. Use "APPLICATION TO DRILL" for permit for such proposals

Lease Designation and Serial No.
SF-078773

6. If Indian, Allottee or Tribe Name

7. If Unit or CA, Agreement Designation
Rosa Unit

8. Well Name and No.
Rosa Unit #77

9. API Well No.
30-039-22538

10. Field and Pool, or Exploratory Area
GALLUP/BLANCO MV/BASIN DK

11. County or Parish, State
Rio Arriba, NM

SUBMIT IN TRIPPLICATE

1. Type of Well
Oil Well ☒ Gas Well ☐ Other ☐

2. Name of Operator
WILLIAMS PRODUCTION COMPANY

3. Address and Telephone No.
PO BOX 3102 MS 25-4, TULSA, OK 74101 (918) 573-3046

4. Location of Well (Footage, Sec., T, R., M., or Survey Description)
1820' FSL, 810' FWL, NW/4 SW/4, SEC 33, T31N, R5W

CHECK APPROPRIATE BOX(S) TO INDICATE NATURE OF NOTICE, REPORT, OR OTHER DATA

TYPE OF SUBMISSION

TYPE OF ACTION

☒ Notice of Intent
☐ Subsequent Report
☐ Final Abandonment

Abandonment
Recompletion
Plugging Back
Casing Repair
Altering Casing
☒ Other Commingle

Change of Plans
New Construction
Non-Routine Fracturing
Water Shut-Off
Conversion to Injection
Dispose Water
(Note: Report results of multiple completion on Well Completion or Recompletion Report and Log form.)

13. Describe Proposed or Completed Operations (Clearly state all pertinent details, and give pertinent dates, including estimated date of starting any proposed work. If well is directionally drilled, give subsurface locations and measured and true vertical depths for all markers and zones pertinent to this work.)*

Commingle Procedure:

- 1) MIRU, kill, ND tree, & NU BOP's.
- 2) POOH with both strings of tubing.
- 3) Mill out packer.
- 4) Clean out fill to PBTD @ 8,125' MD.
- 5) PU Model R 5-1/2" isolation packer and set at 7,600' on 2-3/8" workstring
- 6) Acid Stimulate GL/DK and flowback.
- 7) Set composite bridge plug at 6100' MD and dump sand on top to isolate GL/DK.
- 8) PU Model R 5-1/2" isolation packer and set at 5,450' on 2-3/8" workstring
- 9) Acid Stimulate PC and flowback.
- 10) Mill up composite bridge plug and cleanout to PBTD.
- 11) RIH with 2-3/8" 4.7# J-55 completion tubing w/EOT @ 8,100'.
- 12) ND BOP's.
- 13) Release rig.
- 14) Return to production.

RCVD AUG 7 '08

OIL CONS. DIV.

DIST. 3

No order

14. I hereby certify that the foregoing is true and correct

Signed

Rachael Lippert

Title Engineering Technician

Date July 14, 2008

(This space for Federal or State office use)

Approved by

Joe Hewitt

Title

GCB

Date

8-5-08

Conditions of approval, if any:

NMOCD

ROSA UNIT #77

GALLUP/BLANCO MV/BASIN DK

Location: 1820' FSL, 810' FWL
NW/4 SW/4 Section 33(L), T31N, R5W
Rio Arriba Co., NM

Elevation: 6531' GR 6546' KB

API # 30-039-22538

Spud Date 11/05/80
Completed 05/05/81

Tops Depth

Ojo Alamo 2633'

Kirtland 2765'

Fruitland 3204'

Pictured Cliffs 3463'

Lewis 3567'

Cliff House 5562'

Point Lookout 5795'

Mancos 5902'

Gallup 7660'

Greenhorn 7805'

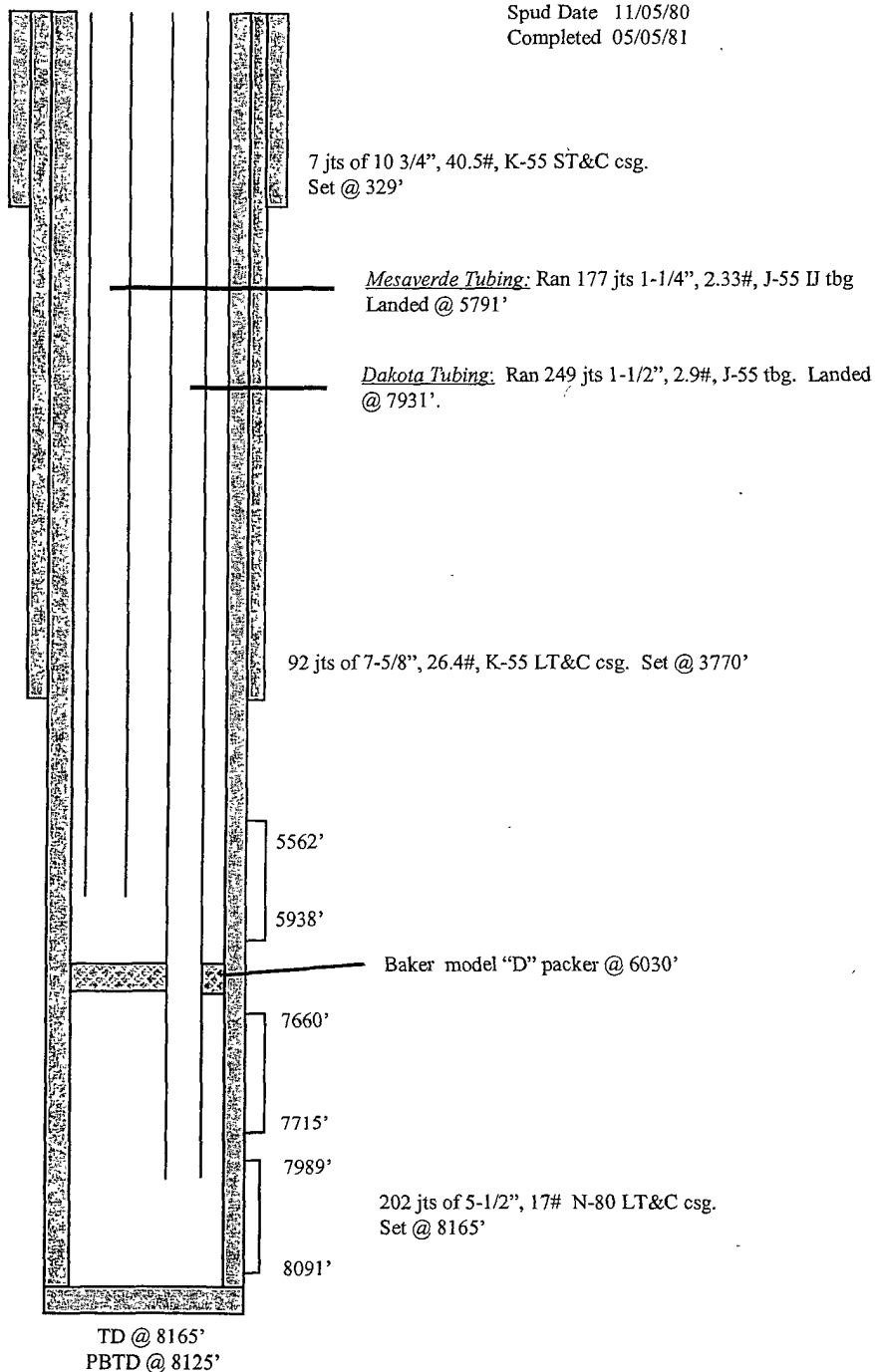
Graneros 7860'

Dakota 7982'

Mesa Verde 5562' - 5938' (27, 0.37" holes)
80,000# of 20/40 sand in 102,000 gal fluid.

Laguna Seca Gallup 7660' - 7715' (112, 0.37" holes)
55,300# of 20/40 sand in 45,550 gal fluid.

Dakota 7989' - 8091' (132, 0.37" holes)
223,000# of 20/40 sand in 88,950 gal fluid.



HOLE SIZE	CASING	CEMENT	CMT TOP
17 1/4"	10 3/4"	450 sx	Surface
9 7/8"	7 5/8"	2 10 sx	2650'
6 3/4"	5 1/2"	300 sx	3100'



Exploration & Production

Production Allocation Recommendation Rosa 77 (MV/GL/DK)

WELLNAME: Rosa 77

LOCATION: NW/4 SW/4 Sec.33, T31N,R05W

API No.: 03-039-22538

FIELD:

COUNTY:

Date:

Rosa Blanco

Rio Arriba, NM

June 30, 2008

Current Status: The Rosa 77 is currently a dual completion well producing from the Mesa Verde, Gallup and Dakota formations. A leak in the packer was indicated with a test which was performed in May. Mandatory repair of the packer offer the opportunity to commingle the Mesa Verde, Gallup and Dakota zones, increasing the ability to produce the well more efficiently. Williams recommends commingling the well after the proposed completion workover to remove scale and fill from across perforations.

Commingle Procedure:

1. Pull Mesa Verde tubing
2. Pull Gallup/Dakota tubing
3. Remove Production packer
4. Clean out to PBTD
5. Acid stimulate each formation
6. Complete with single string 2-3/8" tubing, landed @ 8100', below DK perfs
7. Remove one set of wellhead facilities
8. Return to production as MV/GL/DK commingle

Allocation Method: Historic production data from all zones on this well was gathered and analyzed. Monthly production data from March 2004 through March 2007 was considered because this represented a time when both zones appear to be free from loading problems and each zone was producing optimally. During this time frame the Mesa Verde accounted for approximately 45% of the total production, while the Gallup contributed 16% of the total production and Dakota contributed the remaining 39% of the production.

From March 2004 – March 2007

Total Production from well = 203,783 Mcf

Total Production from MV = 92,601 Mcf

Total Production from DK = 78,821 Mcf

Total Production from GL = 32,361 Mcf

MV allocation = MV prod / Total prod = 92,601 Mcf / 203,783 Mcf = 45% OK

DK allocation = DK prod / Total prod = 78,821 Mcf / 203,783 Mcf = 39%

GL allocation = GL prod / Total prod = 32,361 Mcf / 203,783 Mcf = 16% OK 18.6% with Cum Prod

Rosa #77 Production Evaluation Comparison Period

