

District I  
1625 N. French Dr., Hobbs, NM 88240  
District II  
1301 W. Grand Avenue, Artesia, NM 88210  
District III  
1000 Rio Brazos Rd., Aztec, NM 87410  
District IV  
1220 S. St. Francis Dr., Santa Fe, NM 87505

State of New Mexico  
Energy, Minerals & Natural Resources Department  
OIL CONSERVATION DIVISION  
1220 South St. Francis Dr.  
Santa Fe, NM 87505

Form C-102  
Revised October 12, 2005  
Submit to Appropriate District Office  
State Lease - 7 Copies  
Fee Lease - 3 Copies

☒ AMMENDED REPORT

WELL LOCATION AND ACREAGE DEDICATION PLAT

<sup>1</sup> API Number <b>30-045-34093</b>	<sup>2</sup> Pool Code <b>72319/71599</b>	<sup>3</sup> Pool Name <b>MESAVERDE / DAKOTA</b>
<sup>4</sup> Property Code <b>31330</b>	<sup>5</sup> Property Name <b>SAN JUAN 32-8 UNIT</b>	<sup>6</sup> Well Number <b>29</b>
<sup>7</sup> OGRID <b>217817</b>	<sup>8</sup> Operator Name <b>CONOCOPHILLIPS COMPANY</b>	<sup>9</sup> Elevation <b>6660</b>

<sup>10</sup> SURFACE LOCATION

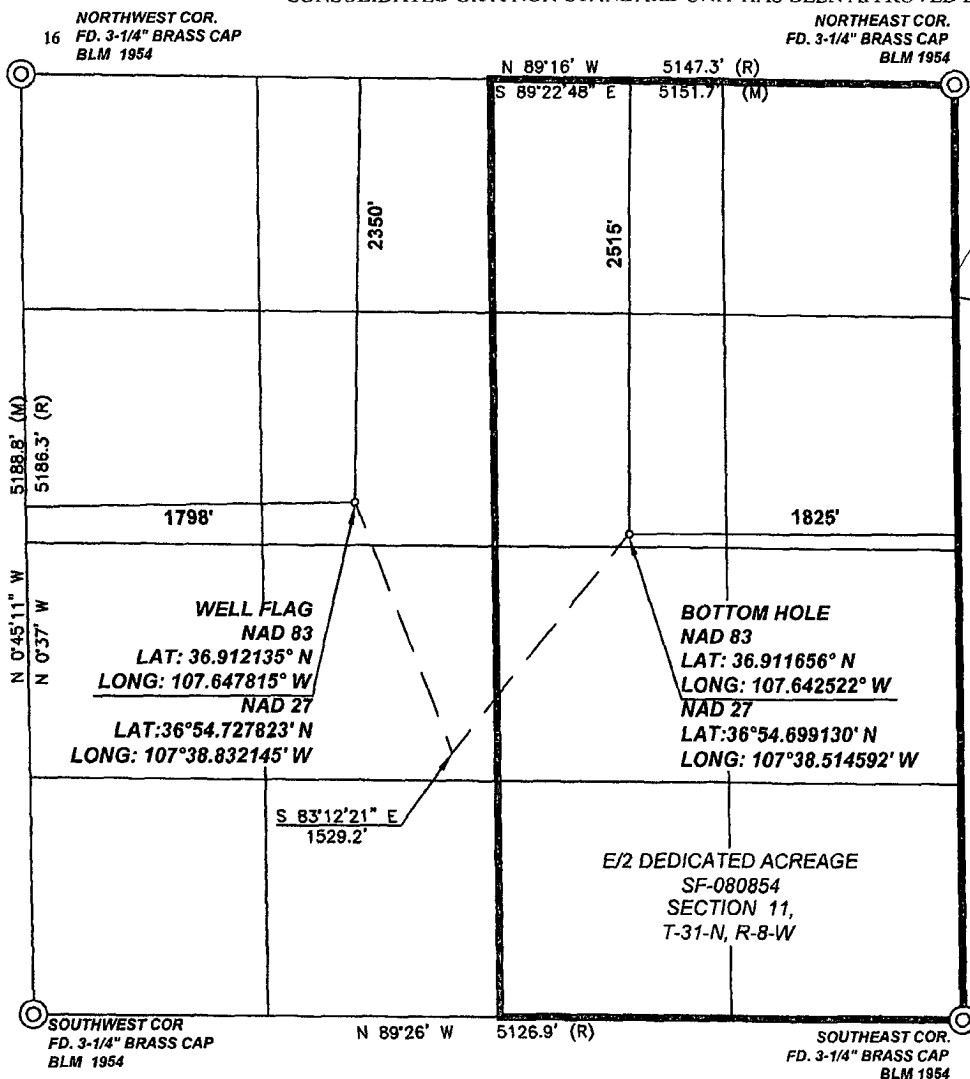
UL or lot no.	Section	Township	Range	Lot Idn	Feet from the	North/South line	Feet from the	East/West line	County
F	11	31-N	8-W		2350	NORTH	1798	WEST	SAN JUAN

<sup>11</sup> Bottom Hole Location If Different From Surface

UL or lot no.	Section	Township	Range	Lot Idn	Feet from the	North/South line	Feet from the	East/West line	County
G	11	31-N	8-W		2515	NORTH	1825	EAST	SAN JUAN

<sup>12</sup> Dedicated Acres <b>320</b>	<sup>13</sup> Joint or Infill	<sup>14</sup> Consolidation Code	<sup>15</sup> Order No.
---	-------------------------------	----------------------------------	-------------------------

NO ALLOWABLE WILL BE ASSIGNED TO THIS COMPLETION UNTIL ALL INTERESTS HAVE BEEN  
CONSOLIDATED OR A NON-STANDARD UNIT HAS BEEN APPROVED BY THE DIVISION



<sup>17</sup> OPERATOR CERTIFICATION

I hereby certify that the information contained herein is true and complete to the best of my knowledge and belief, and that this organization either owns a working interest or unleased mineral interest in the land including the proposed bottom hole location or has a right to drill this well at this location pursuant to a contract with an owner of such a mineral or working interest, or to a voluntary pooling agreement or a compulsory pooling order heretofore entered by the division.

*Rhonda Rogers*  
Signature

**Rhonda Rogers**  
Printed Name

**Regulatory Technician**  
Title and E-mail Address

**8/14/08**  
Date

<sup>18</sup> SURVEYOR CERTIFICATION

I hereby certify that the well location shown on this plat was plotted from field notes of actual surveys made by me or under my supervision, and that the same is true and correct to the best of my belief.

Date of Survey: 5/30/07  
Signature and Seal of Professional Surveyor:



Certificate Number: NM 11393