

District I
1629 N. French Dr., Hobbs, NM 88240
District II
1301 W. Grand Avenue, Artesia, NM 88210
District III
1000 Rio Brazos Road, Aztec, NM 87410
District IV
1220 S. St. Francis Dr., Santa Fe, NM 87505

State of New Mexico
Energy Minerals and Natural Resources
Department
Oil Conservation Division
1220 South St. Francis Dr.
Santa Fe, NM 87505

Form C-144 CLEZ
July 21, 2008

For closed-loop systems that only use above ground steel tanks or haul-off bins and propose to implement waste removal for closure, submit to the appropriate NMOC District Office.

Closed-Loop System Permit or Closure Plan Application

(that only use above ground steel tanks or haul-off bins and propose to implement waste removal for closure)

Type of action: ☒ Permit ☐ Closure

Instructions: Please submit one application (Form C-144 CLEZ) per individual closed-loop system request. For any application request other than for a closed-loop system that only use above ground steel tanks or haul-off bins and propose to implement waste removal for closure, please submit a Form C-144.

Please be advised that approval of this request does not relieve the operator of liability should operations result in pollution of surface water, ground water or the environment. Nor does approval relieve the operator of its responsibility to comply with any other applicable governmental authority's rules, regulations or ordinances.

1.
Operator: NOBLE ENERGY, INC. OGRID#: 234550
Address: 1625 BROADWAY, SUITE 2200 DENVER, COLORADO 80202
Facility or well name: NCRA FEDERAL 22#06.
API Number: 30-039-30526 OCD Permit Number: _____
U/L or Qtr/Qtr F Section 22 Township 26N Range 7W County RIO ARRIBA
Center of Proposed Design: Latitude 36.47379° Longitude 107.56707° NAD: ☒ 1927 ☐ 1983
Surface Owner: ☒ Federal ☐ State ☐ Private ☐ Tribal Trust or Indian Allotment

2.
☒ **Closed-loop System:** Subsection H of 19.15.17.11 NMAC
Operation: ☒ Drilling a new well ☐ Workover or Drilling (Applies to activities which require prior approval of a permit or notice of intent) ☐ P&A
☒ Above Ground Steel Tanks or ☐ Haul-off Bins

3.
Signs: Subsection C of 19.15.17.11 NMAC
☒ 12"x 24", 2" lettering, providing Operator's name, site location, and emergency telephone numbers
☒ Signed in compliance with 19.15.3.103 NMAC

4.
Closed-loop Systems Permit Application Attachment Checklist: Subsection B of 19.15.17.9 NMAC
Instructions: Each of the following items must be attached to the application. Please indicate, by a check mark in the box, that the documents are attached.
☒ Design Plan - based upon the appropriate requirements of 19.15.17.11 NMAC
☒ Operating and Maintenance Plan - based upon the appropriate requirements of 19.15.17.12 NMAC
☒ Closure Plan (Please complete Box 5) - based upon the appropriate requirements of Subsection C of 19.15.17.9 NMAC and 19.15.17.13 NMAC
☐ Previously Approved Design (attach copy of design) API Number: _____
☐ Previously Approved Operating and Maintenance Plan API Number: _____

5.
Waste Removal Closure For Closed-loop Systems That Utilize Above Ground Steel Tanks or Haul-off Bins Only: (19.15.17.13.D NMAC)
Instructions: Please identify the facility or facilities for the disposal of liquids, drilling fluids and drill cuttings. Use attachment if more than two facilities are required.
Disposal Facility Name: JFJ LAND FARMS CO/INDUSTRIAL ECOSYSTEMS, INC. Disposal Facility Permit Number: NM01-0010B
Disposal Facility Name: ENVIROTECH, INC SOIL REMEDIATION FACILITY Disposal Facility Permit Number: NM01-0011
Will any of the proposed closed-loop system operations and associated activities occur on or in areas that will not be used for future service and operations?
☐ Yes (If yes, please provide the information below) ☒ No
Required for impacted areas which will not be used for future service and operations:
☐ Soil Backfill and Cover Design Specifications - based upon the appropriate requirements of Subsection H of 19.15.17.13 NMAC
☐ Re-vegetation Plan - based upon the appropriate requirements of Subsection I of 19.15.17.13 NMAC
☐ Site Reclamation Plan - based upon the appropriate requirements of Subsection G of 19.15.17.13 NMAC

6.

Operator Application Certification:

I hereby certify that the information submitted with this application is true, accurate and complete to the best of my knowledge and belief.

Name (Print): Georgy Hine Title: Drilling Engineer

Signature: [Signature] Date: 8/6/08

e-mail address: ghine@nobleenergyinc.com Telephone: (303) 228-4343

7.

OCD Approval: ☒ Permit Application (including closure plan) ☐ Closure Plan (only)

OCD Representative Signature: [Signature] Approval Date: 8-19-08

Title: Enviro Spec OCD Permit Number: _____

8.

Closure Report (required within 60 days of closure completion): Subsection K of 19.15.17.13 NMAC

Instructions: Operators are required to obtain an approved closure plan prior to implementing any closure activities and submitting the closure report. The closure report is required to be submitted to the division within 60 days of the completion of the closure activities. Please do not complete this section of the form until an approved closure plan has been obtained and the closure activities have been completed.

☐ Closure Completion Date: _____

9.

Closure Report Regarding Waste Removal Closure For Closed-loop Systems That Utilize Above Ground Steel Tanks or Haul-off Bins Only:

Instructions: Please indentify the facility or facilities for where the liquids, drilling fluids and drill cuttings were disposed. Use attachment if more than two facilities were utilized.

Disposal Facility Name: _____ Disposal Facility Permit Number: _____

Disposal Facility Name: _____ Disposal Facility Permit Number: _____

Were the closed-loop system operations and associated activities performed on or in areas that *will not* be used for future service and operations?

☐ Yes (If yes, please demonstrate compliance to the items below) ☐ No

Required for impacted areas which will not be used for future service and operations:

☐ Site Reclamation (Photo Documentation)

☐ Soil Backfilling and Cover Installation

☐ Re-vegetation Application Rates and Seeding Technique

10.

Operator Closure Certification:

I hereby certify that the information and attachments submitted with this closure report is true, accurate and complete to the best of my knowledge and belief. I also certify that the closure complies with all applicable closure requirements and conditions specified in the approved closure plan.

Name (Print): _____ Title: _____

Signature: _____ Date: _____

e-mail address: _____ Telephone: _____

Noble Energy, INC

Closed Loop system proposal

Closed Loop Design Plan:

Noble Energy, Inc's closed loop fluids system will not entail any drying pad, temporary pit, below grade tank or sump. It will include an above ground tank suitable for holding the cuttings and fluids for rig operations. The tank will be sufficient in volume to maintain a safe free board between disposal of the liquids and solids from drilling rig operations.

1. Fencing is not required for an above ground closed-loop system.
2. It will be signed in compliance with 19.15.3.103 NMAC.
3. Two (2) Frac tanks will be on location to store fresh water.

Closed-Loop Operating and Maintenance Plan:

Noble Energy, Inc's closed-loop tank will be operated and maintained to contain liquids and solids in order to prevent contamination of fresh water sources, in order to protect public health and the environment. To ensure that the operation is maintained, the following steps will be followed;

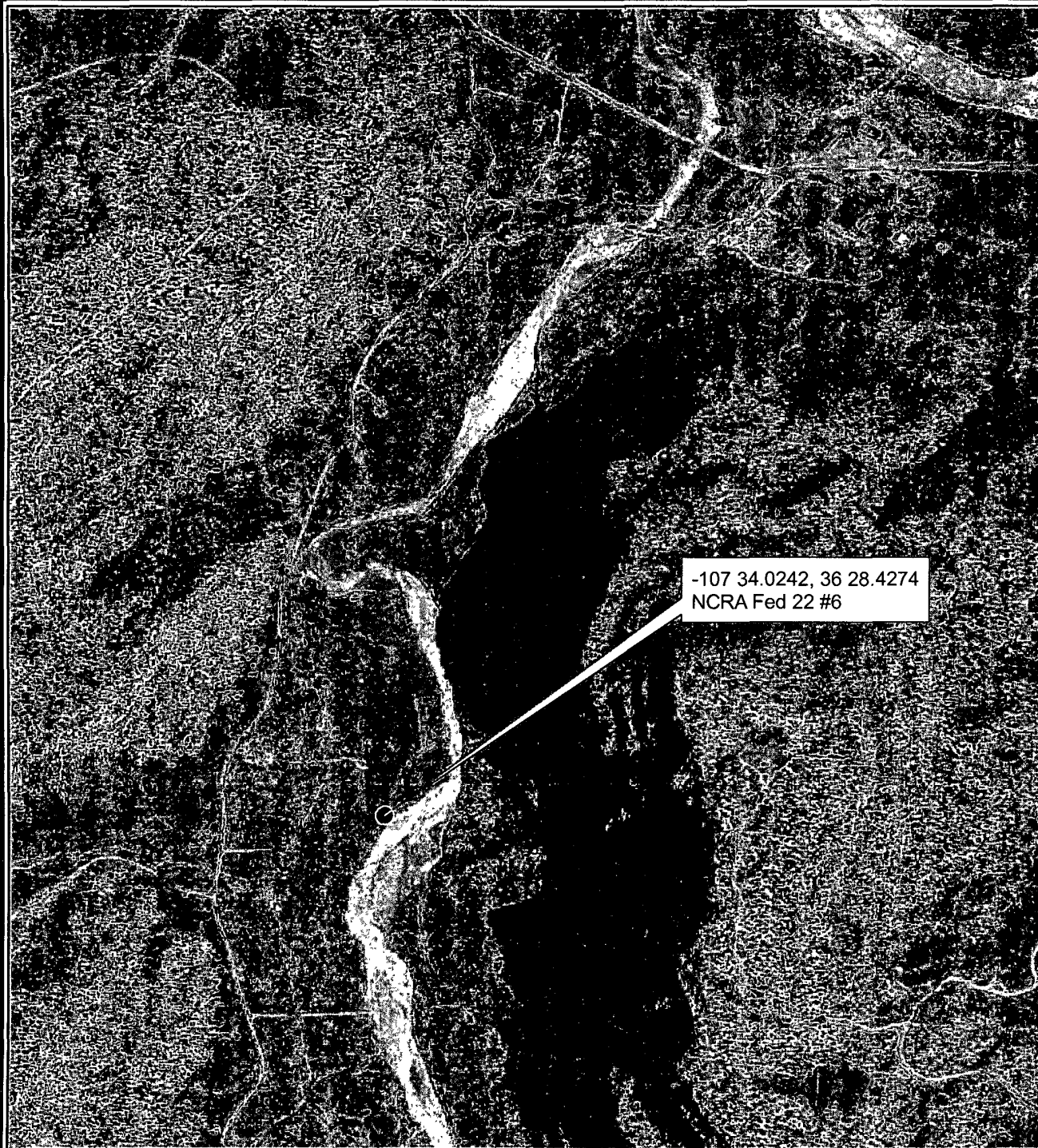
1. The liquids will be vacuumed out and disposed of at the **Envirotech, Inc. Soil Remediation Facility, (Disposal Permit Number NM01-0011)**. Solids in the closed loop system will be vacuumed out and disposed of at the **Envirotech, Inc. Soil Remediation Facility, (Disposal Permit Number NM01-0011)** on a periodic basis to prevent over topping.
2. No hazardous waste, miscellaneous solid waste or debris will be discharged into or stored in the tank. Only fluids or cuttings used or generated by drilling operations will be placed or stored in tank.
3. The division district office will be notified within 48 hours of the discovery of compromised integrity of the closed loop tank. Upon the discovery of the compromised tank, repairs will begin immediately.
4. All of the above operations will be inspected daily and a log will be signed and dated.

Closed-Loop Closure Plan:

The closed-loop tank will be closed in accordance with 19.15.17.13. This will be done by transporting cuttings and all remaining sludge to the **Envirotech, Inc. Soil Remediation Facility, (Disposal Permit Number NM01-0011)** immediately following drilling operations. All remaining liquids will be transported and disposed of at the **Envirotech, Inc. Soil Remediation Facility, (Disposal Permit Number NM01-0011)** facility. The tanks will be removed from the location as part of the rig move.

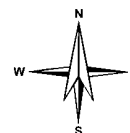
Siting Requirements for NCRA 22 #06 (API #30-039-30526)

- Depth to Groundwater is less than 50 feet.
 - Local aquifers include the Fruitland formation/Pictured Cliffs Sandstone at a depth greater than 100' and intermittently the Ojo Alamo Sandstone from 30'-200' deep.
 - This is a remote site location and does not contain a large amount of groundwater data.
- There is no continuously flowing watercourse within close proximity of the proposed well bore and closed loop systems.
- An aerial photograph is attached to show that there are no residences, schools, Hospitals, public buildings or churches in the area.
- The well site is not located within any incorporated municipal boundary or municipal fresh water field.
- No wetlands can be identified through inspection of the topographic map.
- There are no subsurface mines, mills or quarries in the general area of the well site.
- The site is located in a stable area.
- No excavated materials will be placed on the surface of the pad.



-107 34.0242, 36 28.4274
NCRA Fed 22 #6

0 1 Miles



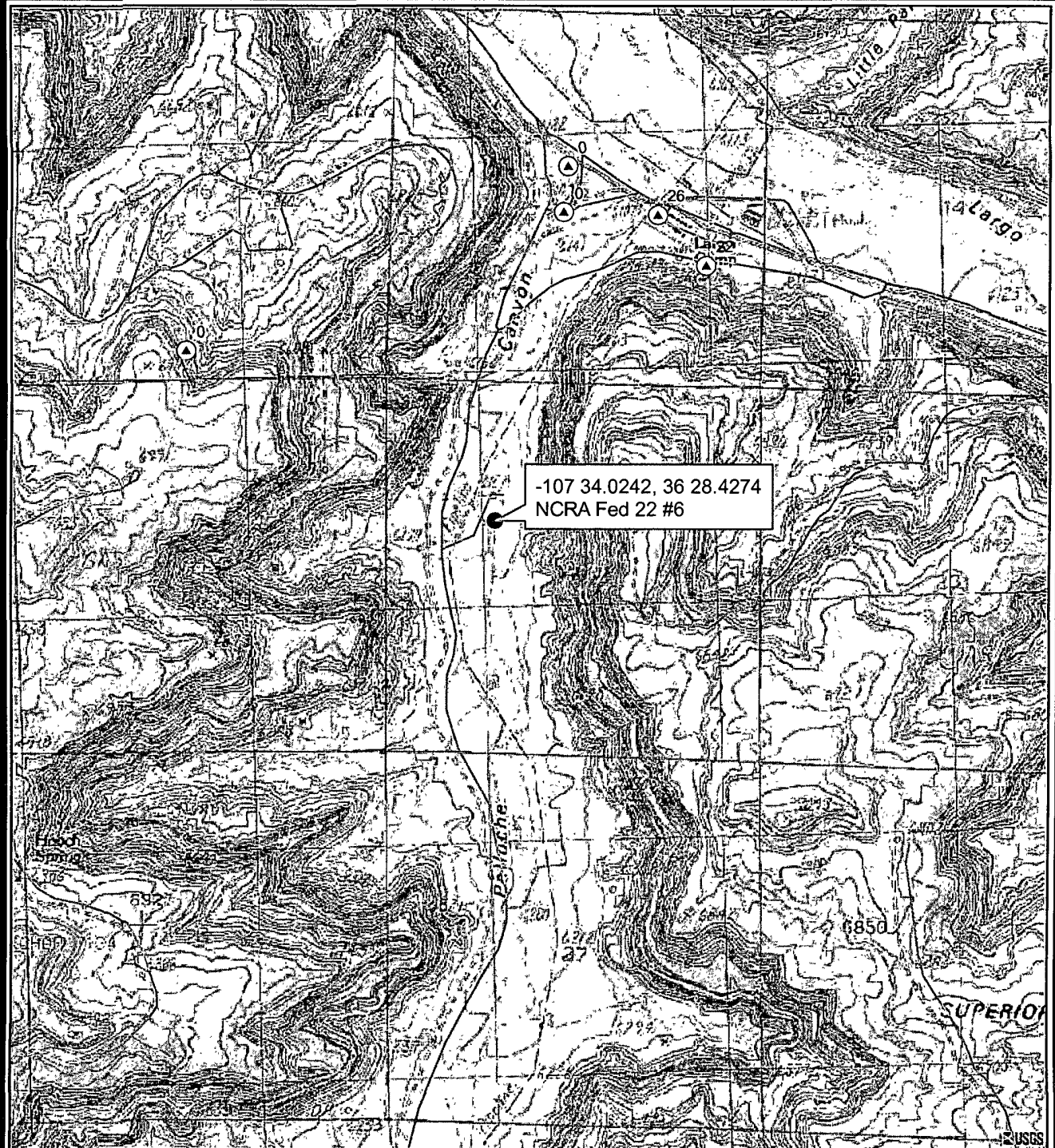
R.T. Hicks Consultants, Ltd
901 Rio Grande Blvd NW Suite F-142
Albuquerque, NM 87104
Ph: 505.266.5004

Aerial Photograph

DRAFT

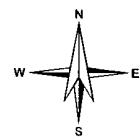
Noble Energy
NCRA Federal 22 #6

July 2008



Explanation

- ⊙ Water well in OSE database

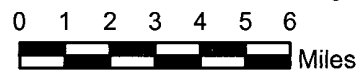
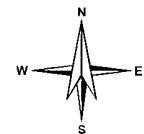
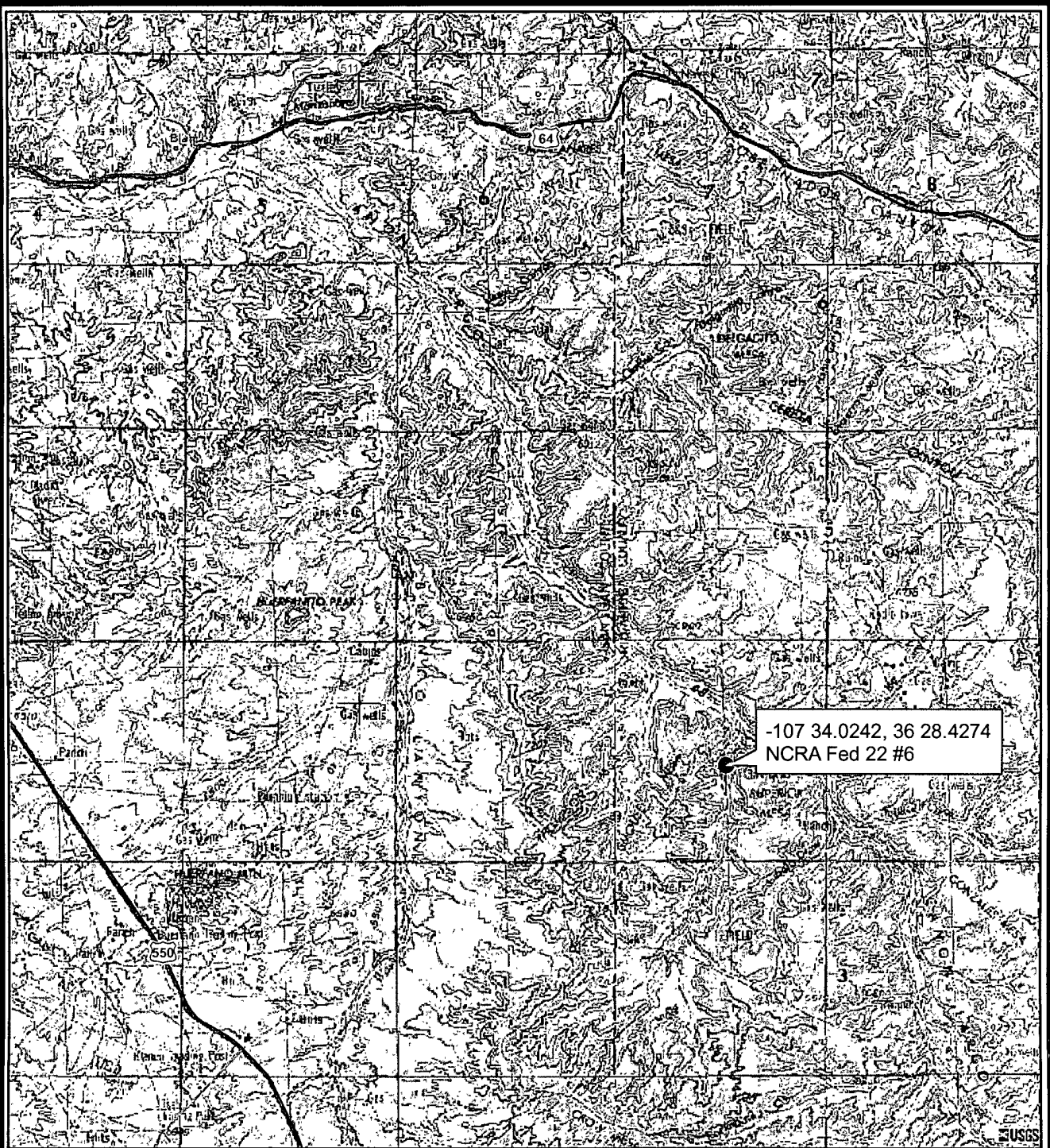


R.T. Hicks Consultants, Ltd
901 Rio Grande Blvd NW Suite F-142
Albuquerque, NM 87104
Ph: 505.266.5004

Topographic Map with OSE WATERS Depth to Water
Value 0 = No Data
Noble Energy
NCRA Federal 22 #6

DRAFT

July 2008



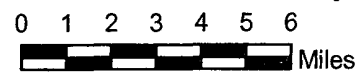
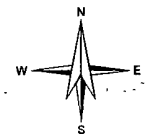
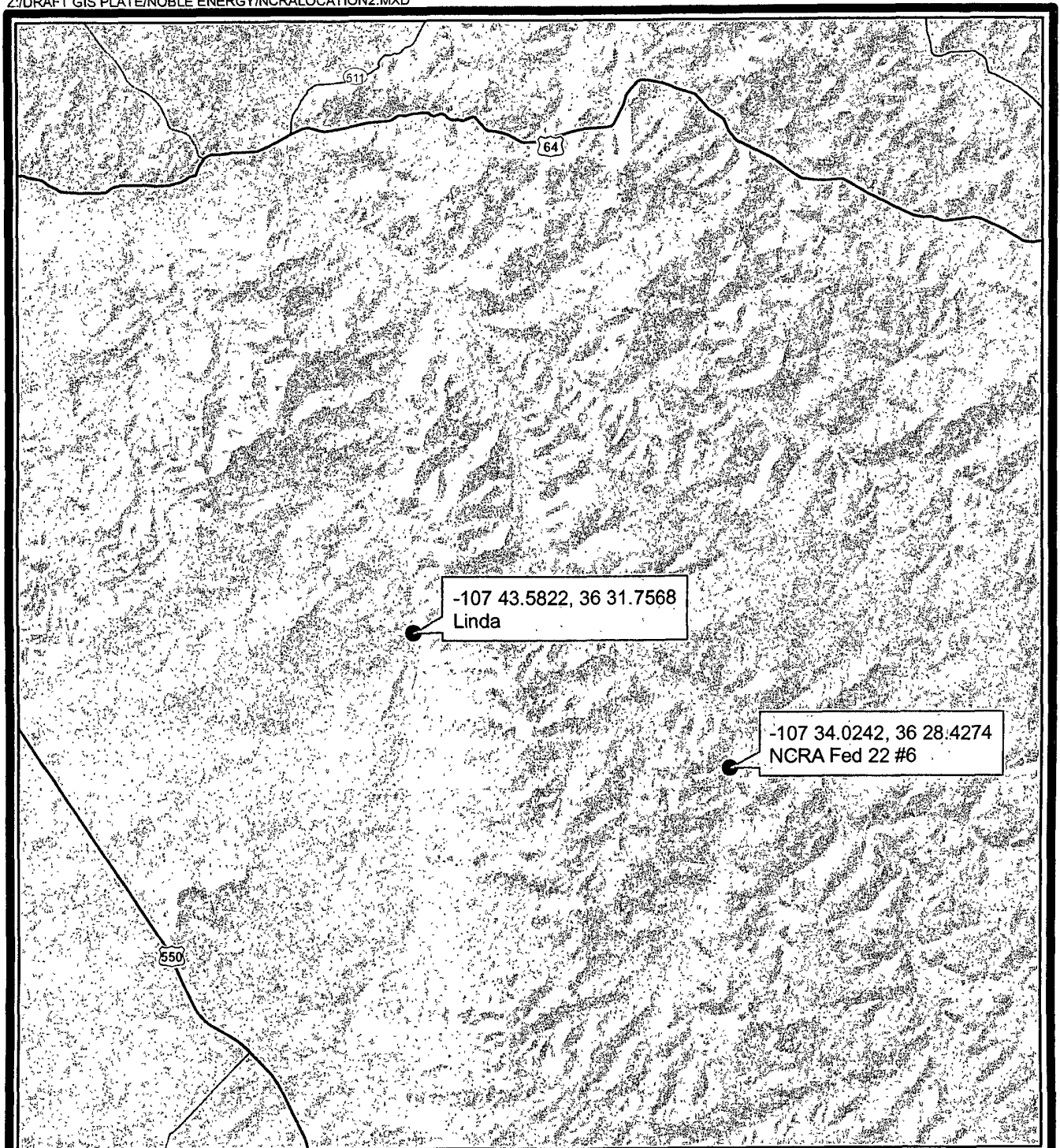
R.T. Hicks Consultants, Ltd
 901 Rio Grande Blvd NW Suite F-142
 Albuquerque, NM 87104
 Ph: 505.266.5004

Location Map

DRAFT

**Noble Energy
 NCRA Federal 22 #6**

July 2008



<p><u>R.T. Hicks Consultants, Ltd</u> 901 Rio Grande Blvd NW Suite F-142 Albuquerque, NM 87104 Ph: 505.266.5004</p>	<p>Location Map</p>	<p>DRAFT</p>
	<p>Noble Energy NCRA Federal 22 #6 and Linda</p>	<p>July 2008</p>