

District I
1625 N French Dr., Hobbs, NM 88240
District II
1301 W Grand Avenue, Artesia, NM 88210
District III
1000 Rio Brazos Road, Aztec, NM 87410
District IV
1220 S St Francis Dr., Santa Fe, NM 87505

State of New Mexico
Energy Minerals and Natural Resources
Department
Oil Conservation Division
1220 South St. Francis Dr.
Santa Fe, NM 87505

Form C-144
July 21, 2008

For temporary pits, closed-loop systems, and below-grade tanks, submit to the appropriate NMOCD District Office.
For permanent pits and exceptions submit to the Santa Fe Environmental Bureau office and provide a copy to the appropriate NMOCD District Office.

**Pit, Closed-Loop System, Below-Grade Tank, or
Proposed Alternative Method Permit or Closure Plan Application**

- Type of action: ☐ Permit of a pit, closed-loop system, below-grade tank, or proposed alternative method
☐ Closure of a pit, closed-loop system, below-grade tank, or proposed alternative method
☐ Modification to an existing permit
☒ Closure plan only submitted for an existing permitted or non-permitted pit, closed-loop system, below-grade tank, or proposed alternative method

Instructions: Please submit one application (Form C-144) per individual pit, closed-loop system, below-grade tank or alternative request

Please be advised that approval of this request does not relieve the operator of liability should operations result in pollution of surface water, ground water or the environment. Nor does approval relieve the operator of its responsibility to comply with any other applicable governmental authority's rules, regulations or ordinances.

1.
Operator: SG Interests I, Ltd OGRID #: 20572 RCVD AUG 4 '08
Address: PO Box 2677, Durango, Colorado 81302 OIL CONS. DIV.
Facility or well name: Federal 21-7-35 #1 DIST. 3
API Number: 30-043-21060 OCD Permit Number: N/A
U/L or Qtr/Qtr B, NWNE Section 35 Township 21N Range 7W County: Sandoval
Center of Proposed Design: Latitude 36.01247*N Longitude 107.54333*W NAD: ☒ 1927 ☐ 1983
Surface Owner: ☒ Federal ☐ State ☐ Private ☐ Tribal Trust or Indian Allotment

2.
☒ **Pit:** Subsection F or G of 19.15.17.11 NMAC
Temporary: ☒ Drilling ☐ Workover
☐ Permanent ☐ Emergency ☐ Cavitation ☐ P&A
☒ Lined ☐ Unlined Liner type: Thickness _____ mil ☐ LLDPE ☐ HDPE ☐ PVC ☐ Other _____
☐ String-Reinforced
Liner Seams: ☒ Welded ☐ Factory ☐ Other _____ Volume: 1000 bbl Dimensions: L 75' x W 10' x D 10'

3.
☐ **Closed-loop System:** Subsection H of 19.15.17.11 NMAC
Type of Operation: ☐ P&A ☐ Drilling a new well ☐ Workover or Drilling (Applies to activities which require prior approval of a permit or notice of intent)
☐ Drying Pad ☐ Above Ground Steel Tanks ☐ Haul-off Bins ☐ Other _____
☐ Lined ☐ Unlined Liner type: Thickness _____ mil ☐ LLDPE ☐ HDPE ☐ PVC ☐ Other _____
Liner Seams: ☐ Welded ☐ Factory ☐ Other _____

4.
☐ **Below-grade tank:** Subsection I of 19.15.17.11 NMAC
Volume: _____ bbl Type of fluid: _____
Tank Construction material: _____
☐ Secondary containment with leak detection ☐ Visible sidewalls, liner, 6-inch lift and automatic overflow shut-off
☐ Visible sidewalls and liner ☐ Visible sidewalls only ☐ Other _____
Liner type: Thickness _____ mil ☐ HDPE ☐ PVC ☐ Other _____

5.
☐ **Alternative Method:**
Submittal of an exception request is required. Exceptions must be submitted to the Santa Fe Environmental Bureau office for consideration of approval

6.

Fencing: Subsection D of 19.15.17.11 NMAC (*Applies to permanent pits, temporary pits, and below-grade tanks*)

☐ Chain link, six feet in height, two strands of barbed wire at top (*Required if located within 1000 feet of a permanent residence, school, hospital, institution or church*)

☐ Four foot height, four strands of barbed wire evenly spaced between one and four feet

☒ Alternate. Please specify 48" Hog wire with 1 strand Barbed wire on top

7.

Netting: Subsection E of 19.15.17.11 NMAC (*Applies to permanent pits and permanent open top tanks*)

☐ Screen ☐ Netting ☐ Other _____

☐ Monthly inspections (If netting or screening is not physically feasible)

8.

Signs: Subsection C of 19.15.17.11 NMAC

☐ 12"x 24", 2" lettering, providing Operator's name, site location, and emergency telephone numbers

☒ Signed in compliance with 19.15.3.103 NMAC

9.

Administrative Approvals and Exceptions:

Justifications and/or demonstrations of equivalency are required. Please refer to 19.15.17 NMAC for guidance.

Please check a box if one or more of the following is requested, if not leave blank:

☐ Administrative approval(s): Requests must be submitted to the appropriate division district or the Santa Fe Environmental Bureau office for consideration of approval.

☐ Exception(s): Requests must be submitted to the Santa Fe Environmental Bureau office for consideration of approval.

10.

Siting Criteria (regarding permitting): 19.15.17.10 NMAC

Instructions: The applicant must demonstrate compliance for each siting criteria below in the application. Recommendations of acceptable source material are provided below. Requests regarding changes to certain siting criteria may require administrative approval from the appropriate district office or may be considered an exception which must be submitted to the Santa Fe Environmental Bureau office for consideration of approval. Applicant must attach justification for request. Please refer to 19.15.17.10 NMAC for guidance. Siting criteria does not apply to drying pads or above-grade tanks associated with a closed-loop system.

Ground water is less than 50 feet below the bottom of the temporary pit, permanent pit, or below-grade tank.

- NM Office of the State Engineer - iWATERS database search; USGS; Data obtained from nearby wells

☐ Yes ☐ No

Within 300 feet of a continuously flowing watercourse, or 200 feet of any other significant watercourse or lakebed, sinkhole, or playa lake (measured from the ordinary high-water mark).

- Topographic map; Visual inspection (certification) of the proposed site

☐ Yes ☐ No

Within 300 feet from a permanent residence, school, hospital, institution, or church in existence at the time of initial application. (*Applies to temporary, emergency, or cavitation pits and below-grade tanks*)

- Visual inspection (certification) of the proposed site; Aerial photo; Satellite image

☐ Yes ☐ No
☐ NA

Within 1000 feet from a permanent residence, school, hospital, institution, or church in existence at the time of initial application. (*Applies to permanent pits*)

- Visual inspection (certification) of the proposed site; Aerial photo; Satellite image

☐ Yes ☐ No
☐ NA

Within 500 horizontal feet of a private, domestic fresh water well or spring that less than five households use for domestic or stock watering purposes, or within 1000 horizontal feet of any other fresh water well or spring, in existence at the time of initial application.

- NM Office of the State Engineer - iWATERS database search; Visual inspection (certification) of the proposed site

☐ Yes ☐ No

Within incorporated municipal boundaries or within a defined municipal fresh water well field covered under a municipal ordinance adopted pursuant to NMSA 1978, Section 3-27-3, as amended.

- Written confirmation or verification from the municipality; Written approval obtained from the municipality

☐ Yes ☐ No

Within 500 feet of a wetland.

- US Fish and Wildlife Wetland Identification map; Topographic map; Visual inspection (certification) of the proposed site

☐ Yes ☐ No

Within the area overlying a subsurface mine.

- Written confirmation or verification or map from the NM EMNRD-Mining and Mineral Division

☐ Yes ☐ No

Within an unstable area.

- Engineering measures incorporated into the design; NM Bureau of Geology & Mineral Resources; USGS; NM Geological Society; Topographic map

☐ Yes ☐ No

Within a 100-year floodplain.

- FEMA map

☐ Yes ☐ No

11.

Temporary Pits, Emergency Pits, and Below-grade Tanks Permit Application Attachment Checklist: Subsection B of 19.15.17.9 NMAC**Instructions:** Each of the following items must be attached to the application. Please indicate, by a check mark in the box, that the documents are attached.

- ☐ Hydrogeologic Report (Below-grade Tanks) - based upon the requirements of Paragraph (4) of Subsection B of 19.15.17.9 NMAC
- ☐ Hydrogeologic Data (Temporary and Emergency Pits) - based upon the requirements of Paragraph (2) of Subsection B of 19.15.17.9 NMAC
- ☐ Siting Criteria Compliance Demonstrations - based upon the appropriate requirements of 19.15.17.10 NMAC
- ☐ Design Plan - based upon the appropriate requirements of 19.15.17.11 NMAC
- ☐ Operating and Maintenance Plan - based upon the appropriate requirements of 19.15.17.12 NMAC
- ☐ Closure Plan (Please complete Boxes 14 through 18, if applicable) - based upon the appropriate requirements of Subsection C of 19.15.17.9 NMAC and 19.15.17.13 NMAC

☐ Previously Approved Design (attach copy of design) API Number: _____ or Permit Number: _____

12.

Closed-loop Systems Permit Application Attachment Checklist: Subsection B of 19.15.17.9 NMAC**Instructions:** Each of the following items must be attached to the application. Please indicate, by a check mark in the box, that the documents are attached.

- ☐ Geologic and Hydrogeologic Data (only for on-site closure) - based upon the requirements of Paragraph (3) of Subsection B of 19.15.17.9
- ☐ Siting Criteria Compliance Demonstrations (only for on-site closure) - based upon the appropriate requirements of 19.15.17.10 NMAC
- ☐ Design Plan - based upon the appropriate requirements of 19.15.17.11 NMAC
- ☐ Operating and Maintenance Plan - based upon the appropriate requirements of 19.15.17.12 NMAC
- ☐ Closure Plan (Please complete Boxes 14 through 18, if applicable) - based upon the appropriate requirements of Subsection C of 19.15.17.9 NMAC and 19.15.17.13 NMAC

☐ Previously Approved Design (attach copy of design) API Number: _____

☐ Previously Approved Operating and Maintenance Plan API Number: _____ (Applies only to closed-loop system that use above ground steel tanks or haul-off bins and propose to implement waste removal for closure)

13.

Permanent Pits Permit Application Checklist: Subsection B of 19.15.17.9 NMAC**Instructions:** Each of the following items must be attached to the application. Please indicate, by a check mark in the box, that the documents are attached.

- ☐ Hydrogeologic Report - based upon the requirements of Paragraph (1) of Subsection B of 19.15.17.9 NMAC
- ☐ Siting Criteria Compliance Demonstrations - based upon the appropriate requirements of 19.15.17.10 NMAC
- ☐ Climatological Factors Assessment
- ☐ Certified Engineering Design Plans - based upon the appropriate requirements of 19.15.17.11 NMAC
- ☐ Dike Protection and Structural Integrity Design - based upon the appropriate requirements of 19.15.17.11 NMAC
- ☐ Leak Detection Design - based upon the appropriate requirements of 19.15.17.11 NMAC
- ☐ Liner Specifications and Compatibility Assessment - based upon the appropriate requirements of 19.15.17.11 NMAC
- ☐ Quality Control/Quality Assurance Construction and Installation Plan
- ☐ Operating and Maintenance Plan - based upon the appropriate requirements of 19.15.17.12 NMAC
- ☐ Freeboard and Overtopping Prevention Plan - based upon the appropriate requirements of 19.15.17.11 NMAC
- ☐ Nuisance or Hazardous Odors, including H₂S, Prevention Plan
- ☐ Emergency Response Plan
- ☐ Oil Field Waste Stream Characterization
- ☐ Monitoring and Inspection Plan
- ☐ Erosion Control Plan
- ☐ Closure Plan - based upon the appropriate requirements of Subsection C of 19.15.17.9 NMAC and 19.15.17.13 NMAC

14.

Proposed Closure: 19.15.17.13 NMAC**Instructions:** Please complete the applicable boxes, Boxes 14 through 18, in regards to the proposed closure plan.

Type: ☒ Drilling ☐ Workover ☐ Emergency ☐ Cavitation ☐ P&A ☐ Permanent Pit ☐ Below-grade Tank ☐ Closed-loop System

☐ Alternative

Proposed Closure Method: ☐ Waste Excavation and Removal

☐ Waste Removal (Closed-loop systems only)

☒ On-site Closure Method (Only for temporary pits and closed-loop systems)

☒ In-place Burial ☐ On-site Trench Burial

☐ Alternative Closure Method (Exceptions must be submitted to the Santa Fe Environmental Bureau for consideration)

15.

Waste Excavation and Removal Closure Plan Checklist: (19.15.17.13 NMAC) **Instructions:** Each of the following items must be attached to the closure plan. Please indicate, by a check mark in the box, that the documents are attached.

- ☐ Protocols and Procedures - based upon the appropriate requirements of 19.15.17.13 NMAC
- ☐ Confirmation Sampling Plan (if applicable) - based upon the appropriate requirements of Subsection F of 19.15.17.13 NMAC
- ☐ Disposal Facility Name and Permit Number (for liquids, drilling fluids and drill cuttings)
- ☐ Soil Backfill and Cover Design Specifications - based upon the appropriate requirements of Subsection H of 19.15.17.13 NMAC
- ☐ Re-vegetation Plan - based upon the appropriate requirements of Subsection I of 19.15.17.13 NMAC
- ☐ Site Reclamation Plan - based upon the appropriate requirements of Subsection G of 19.15.17.13 NMAC

16.

Waste Removal Closure For Closed-loop Systems That Utilize Above Ground Steel Tanks or Haul-off Bins Only: (19.15.17.13.D NMAC)**Instructions:** Please identify the facility or facilities for the disposal of liquids, drilling fluids and drill cuttings. Use attachment if more than two facilities are required.

Disposal Facility Name: _____ Disposal Facility Permit Number: _____

Disposal Facility Name: _____ Disposal Facility Permit Number: _____

Will any of the proposed closed-loop system operations and associated activities occur on or in areas that *will not* be used for future service and operations?☐ Yes (If yes, please provide the information below) ☐ No*Required for impacted areas which will not be used for future service and operations:*☐ Soil Backfill and Cover Design Specifications - based upon the appropriate requirements of Subsection H of 19.15.17.13 NMAC☐ Re-vegetation Plan - based upon the appropriate requirements of Subsection I of 19.15.17.13 NMAC☐ Site Reclamation Plan - based upon the appropriate requirements of Subsection G of 19.15.17.13 NMAC

17.

Siting Criteria (regarding on-site closure methods only): 19.15.17.10 NMAC**Instructions:** Each siting criteria requires a demonstration of compliance in the closure plan. Recommendations of acceptable source material are provided below. Requests regarding changes to certain siting criteria may require administrative approval from the appropriate district office or may be considered an exception which must be submitted to the Santa Fe Environmental Bureau office for consideration of approval. Justifications and/or demonstrations of equivalency are required. Please refer to 19.15.17.10 NMAC for guidance.

Ground water is less than 50 feet below the bottom of the buried waste.

- NM Office of the State Engineer - iWATERS database search; USGS; Data obtained from nearby wells

☐ Yes ☒ No☐ NA

Ground water is between 50 and 100 feet below the bottom of the buried waste

- NM Office of the State Engineer - iWATERS database search; USGS; Data obtained from nearby wells

☐ Yes ☒ No☐ NA

Ground water is more than 100 feet below the bottom of the buried waste.

- NM Office of the State Engineer - iWATERS database search; USGS; Data obtained from nearby wells

☒ Yes ☐ No☐ NA

Within 300 feet of a continuously flowing watercourse, or 200 feet of any other significant watercourse or lakebed, sinkhole, or playa lake (measured from the ordinary high-water mark).

- Topographic map; Visual inspection (certification) of the proposed site

☐ Yes ☒ No

Within 300 feet from a permanent residence, school, hospital, institution, or church in existence at the time of initial application.

- Visual inspection (certification) of the proposed site; Aerial photo; Satellite image

☐ Yes ☒ No

Within 500 horizontal feet of a private, domestic fresh water well or spring that less than five households use for domestic or stock watering purposes, or within 1000 horizontal feet of any other fresh water well or spring, in existence at the time of initial application.

- NM Office of the State Engineer - iWATERS database; Visual inspection (certification) of the proposed site

☐ Yes ☒ No

Within incorporated municipal boundaries or within a defined municipal fresh water well field covered under a municipal ordinance adopted pursuant to NMSA 1978, Section 3-27-3, as amended.

- Written confirmation or verification from the municipality; Written approval obtained from the municipality

☐ Yes ☒ No

Within 500 feet of a wetland.

- US Fish and Wildlife Wetland Identification map; Topographic map; Visual inspection (certification) of the proposed site

☐ Yes ☒ No

Within the area overlying a subsurface mine.

- Written confirmation or verification or map from the NM EMNRD-Mining and Mineral Division

☐ Yes ☒ No

Within an unstable area.

- Engineering measures incorporated into the design; NM Bureau of Geology & Mineral Resources; USGS; NM Geological Society; Topographic map

☐ Yes ☒ No

Within a 100-year floodplain.

- FEMA map

☐ Yes ☒ No

18.

On-Site Closure Plan Checklist: (19.15.17.13 NMAC) **Instructions:** Each of the following items must be attached to the closure plan. Please indicate, by a check mark in the box, that the documents are attached.☒ Siting Criteria Compliance Demonstrations - based upon the appropriate requirements of 19.15.17.10 NMAC☒ Proof of Surface Owner Notice - based upon the appropriate requirements of Subsection F of 19.15.17.13 NMAC☐ Construction/Design Plan of Burial Trench (if applicable) based upon the appropriate requirements of 19.15.17.11 NMAC☐ Construction/Design Plan of Temporary Pit (for in-place burial of a drying pad) - based upon the appropriate requirements of 19.15.17.11 NMAC☒ Protocols and Procedures - based upon the appropriate requirements of 19.15.17.13 NMAC☒ Confirmation Sampling Plan (if applicable) - based upon the appropriate requirements of Subsection F of 19.15.17.13 NMAC☒ Waste Material Sampling Plan - based upon the appropriate requirements of Subsection F of 19.15.17.13 NMAC☒ Disposal Facility Name and Permit Number (for liquids, drilling fluids and drill cuttings or in case on-site closure standards cannot be achieved)☒ Soil Cover Design - based upon the appropriate requirements of Subsection H of 19.15.17.13 NMAC☒ Re-vegetation Plan - based upon the appropriate requirements of Subsection I of 19.15.17.13 NMAC☒ Site Reclamation Plan - based upon the appropriate requirements of Subsection G of 19.15.17.13 NMAC

19.

Operator Application Certification:

I hereby certify that the information submitted with this application is true, accurate and complete to the best of my knowledge and belief.

Name (Print): William Schwab III Title: Registered Agent for SG Interests I, Ltd.

Signature: [Signature] Date: 7/24/2008

e-mail address: tripp@nikaenergy.com Telephone: 970-259-2701

20.

OCD Approval: ☒ Permit Application (including closure plan) ☐ Closure Plan (only) ☐ OCD Conditions (see attachment)

OCD Representative Signature: [Signature] Approval Date: 8-19-08

Title: Enviro / spec OCD Permit Number: _____

21.

Closure Report (required within 60 days of closure completion): Subsection K of 19.15.17.13 NMAC

Instructions: Operators are required to obtain an approved closure plan prior to implementing any closure activities and submitting the closure report. The closure report is required to be submitted to the division within 60 days of the completion of the closure activities. Please do not complete this section of the form until an approved closure plan has been obtained and the closure activities have been completed.

☐ Closure Completion Date: _____

22.

Closure Method:

☐ Waste Excavation and Removal ☐ On-Site Closure Method ☐ Alternative Closure Method ☐ Waste Removal (Closed-loop systems only)
☐ If different from approved plan, please explain.

23.

Closure Report Regarding Waste Removal Closure For Closed-loop Systems That Utilize Above Ground Steel Tanks or Haul-off Bins Only:

Instructions: Please identify the facility or facilities for where the liquids, drilling fluids and drill cuttings were disposed. Use attachment if more than two facilities were utilized.

Disposal Facility Name: _____ Disposal Facility Permit Number: _____

Disposal Facility Name: _____ Disposal Facility Permit Number: _____

Were the closed-loop system operations and associated activities performed on or in areas that *will not* be used for future service and operations?

☐ Yes (If yes, please demonstrate compliance to the items below) ☐ No

Required for impacted areas which will not be used for future service and operations:

- ☐ Site Reclamation (Photo Documentation)
☐ Soil Backfilling and Cover Installation
☐ Re-vegetation Application Rates and Seeding Technique

24.

Closure Report Attachment Checklist: Instructions: Each of the following items must be attached to the closure report. Please indicate, by a check mark in the box, that the documents are attached.

- ☐ Proof of Closure Notice (surface owner and division)
☐ Proof of Deed Notice (required for on-site closure)
☐ Plot Plan (for on-site closures and temporary pits)
☐ Confirmation Sampling Analytical Results (if applicable)
☐ Waste Material Sampling Analytical Results (required for on-site closure)
☐ Disposal Facility Name and Permit Number
☐ Soil Backfilling and Cover Installation
☐ Re-vegetation Application Rates and Seeding Technique
☐ Site Reclamation (Photo Documentation)

On-site Closure Location: Latitude _____ Longitude _____ NAD: ☐ 1927 ☐ 1983

25.

Operator Closure Certification:

I hereby certify that the information and attachments submitted with this closure report is true, accurate and complete to the best of my knowledge and belief. I also certify that the closure complies with all applicable closure requirements and conditions specified in the approved closure plan.

Name (Print): _____ Title: _____

Signature: _____ Date: _____

e-mail address: _____ Telephone: _____

Hydrogeology Report for the Federal 21-7-35 #1

The Federal 21-7-35 #1 located in Sandoval County, is in the upper southeastern reaches of the San Juan River drainage basin. The surface is covered by Quaternary alluvium consisting of unconsolidated sand, gravel, silt, clay, terrace gravel and boulder deposits. The alluvium itself is not a source for ground water. The consolidated rock outcrops along the drainage are the Tertiary Age Paleocene Nacimiento Formation which underlies the alluvium. The Nacimiento Formation is a stratified fluvial sand and shale sequence less than 200 feet thick.

The aquifer in this area of the San Juan Basin primarily consists of the Ojo Alamo Sandstone. The top of the Ojo Alamo at this drill site is estimated to be approximately 150 feet below the surface. The Ojo Alamo is a permeable conglomerate and medium to very coarse sandstone interlayered with relatively impermeable shale. This aquifer contains fresh to moderately saline water. Dissolved-solids concentrations generally increase along the groundwater flow path from less than 1,000 milligrams per liter near recharge areas to about 4,000 as the formation is deeper into the basin.

The proposed well, Federal 21-7-35 #1, is located in the NWNE quarter-quarter of section 35 T21N- R7W. Only one groundwater well in this Township was identified using the iWaters Database from the Office of the State Engineers in section 7 (approximately 5 miles to the northwest). The following water parameters were determined for this well:

Average Well Depth:	680 feet
Average Depth of Water:	240 feet
Average Water Column:	440 feet

The closest well from the surrounding townships was approximately 4.0 miles to the southwest in section 17 of 20N 7W.

Well Depth:	252 feet
Depth of Water:	110 feet
Water Column:	142 feet


Reference:

GROUND WATER ATLAS of the UNITED STATES Arizona, Colorado, New Mexico, Utah, HA 730-C, USGS, S.G. Robson and E.R. Banta, 1995

iWaters (Waters Database), New Mexico Office of the State Engineer, 2007

New Mexico Office of the State Engineer
POD Reports and Downloads

Township: 21N Range: 06W Sections:

NAD27 X: Y: Zone:  Search Radius:

County:  Basin:  Number: Suffix:

Owner Name: (First) (Last) ☐ Non-Domestic ☐ Domestic
☒ All

POD / Surface Data Report

Avg Depth to Water Report

Water Column Report

Clear Form

iWATERS Menu

Help

AVERAGE DEPTH OF WATER REPORT 07/21/2008

Bsn	Tws	Rng	Sec	Zone	X	Y	Wells	(Depth Water in Feet)		
								Min	Max	Avg

No Records found, try again

New Mexico Office of the State Engineer
POD Reports and Downloads

Township: 20N Range: 06W Sections:

NAD27 X: Y: Zone: Search Radius:

County: Basin: Number: Suffix:

Owner Name: (First) (Last) ☐ Non-Domestic ☐ Domestic
☒ All

POD / Surface Data Report

Avg Depth to Water Report

Water Column Report

Clear Form

iWATERS Menu

Help

AVERAGE DEPTH OF WATER REPORT 07/21/2008

Bsn	Tws	Rng	Sec	Zone	X	Y	Wells	(Depth Water in Feet)		
								Min	Max	Avg
SJ	20N	06W	11				1	229	229	229
SJ	20N	06W	32				2	180	255	218

Record Count: 3

New Mexico Office of the State Engineer
POD Reports and Downloads

Township: 21N Range: 05W Sections:

NAD27 X: Y: Zone: Search Radius:

County: Basin: Number: Suffix:

Owner Name: (First) (Last) ☐ Non-Domestic ☐ Domestic ☒ All

POD / Surface Data Report

Avg Depth to Water Report

Water Column Report

Clear Form

iWATERS Menu

Help

WATER COLUMN REPORT 07/21/2008

(quarters are 1=NW 2=NE 3=SW 4=SE)
(quarters are biggest to smallest)

POD Number	Tw	Rng	Sec	q	q	q	Zone	X	Y	Depth Well	Depth Water	Water (in feet) Column
RG 29678	21N	05W	32	4	2					2238	769	1469

Record Count: 1

New Mexico Office of the State Engineer
POD Reports and Downloads

Township: 22N Range: 06W Sections:

NAD27 X: Y: Zone: Search Radius:

County: Basin: Number: Suffix:

Owner Name: (First) (Last) ☐ Non-Domestic ☐ Domestic
☒ All

POD / Surface Data Report

Avg Depth to Water Report

Water Column Report

Clear Form

iWATERS Menu

Help

AVERAGE DEPTH OF WATER REPORT 07/21/2008

Bsn	Tws	Rng	Sec	Zone	X	Y	Wells	(Depth Water in Feet)		
								Min	Max	Avg

No Records found, try again

New Mexico Office of the State Engineer
POD Reports and Downloads

Township: 21N Range: 07W Sections:

NAD27 X: Y: Zone: Search Radius:

County: Basin: Number: Suffix:

Owner Name: (First) (Last) ☐ Non-Domestic ☐ Domestic
☒ All

POD / Surface Data Report

Avg Depth to Water Report

Water Column Report

Clear Form

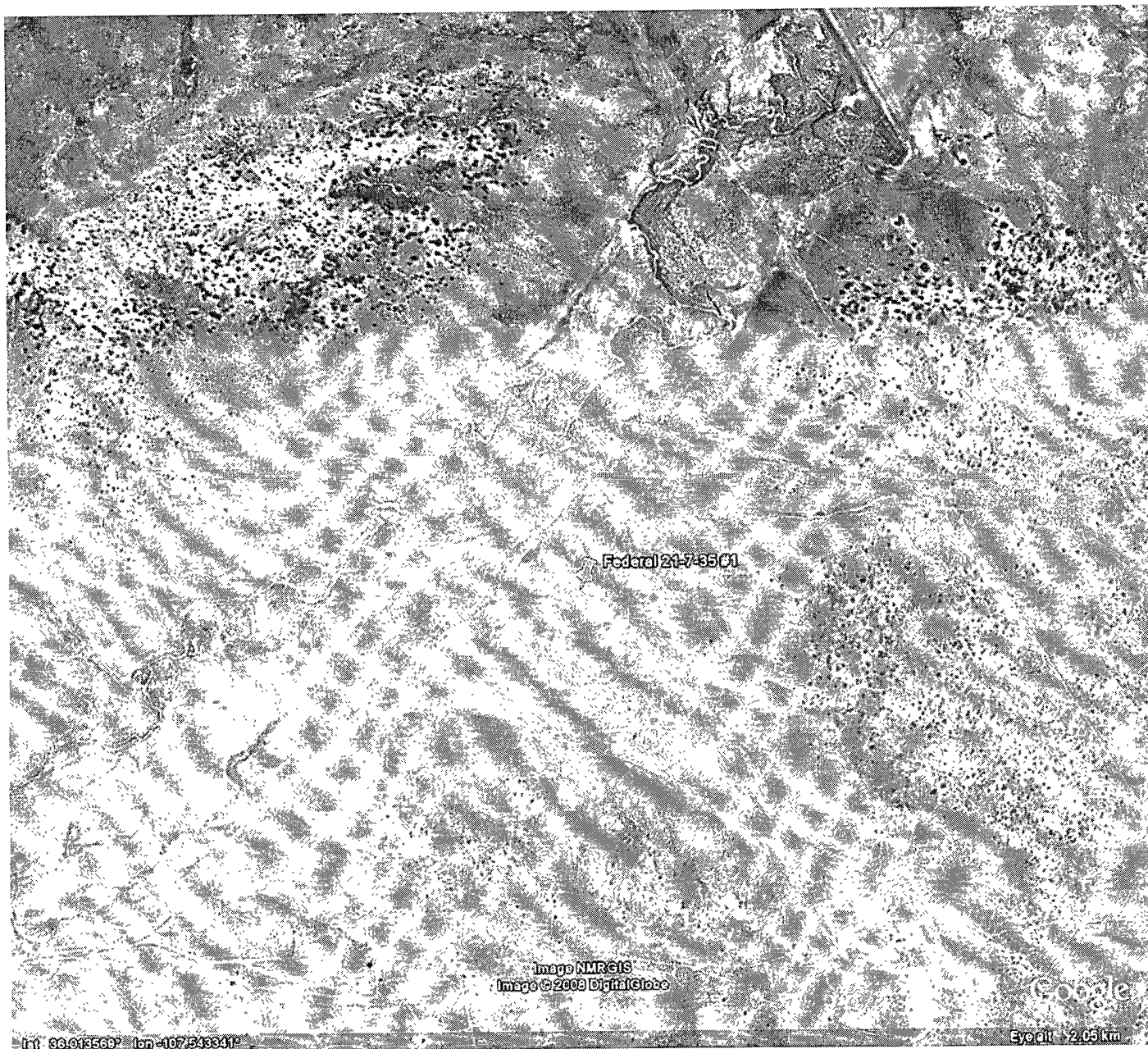
iWATERS Menu

Help

AVERAGE DEPTH OF WATER REPORT 07/21/2008

Bsn	Tws	Rng	Sec	Zone	X	Y	Wells	(Depth Water in Feet)		
								Min	Max	Avg
SJ	21N	07W	07				1	240	240	240

Record Count: 1



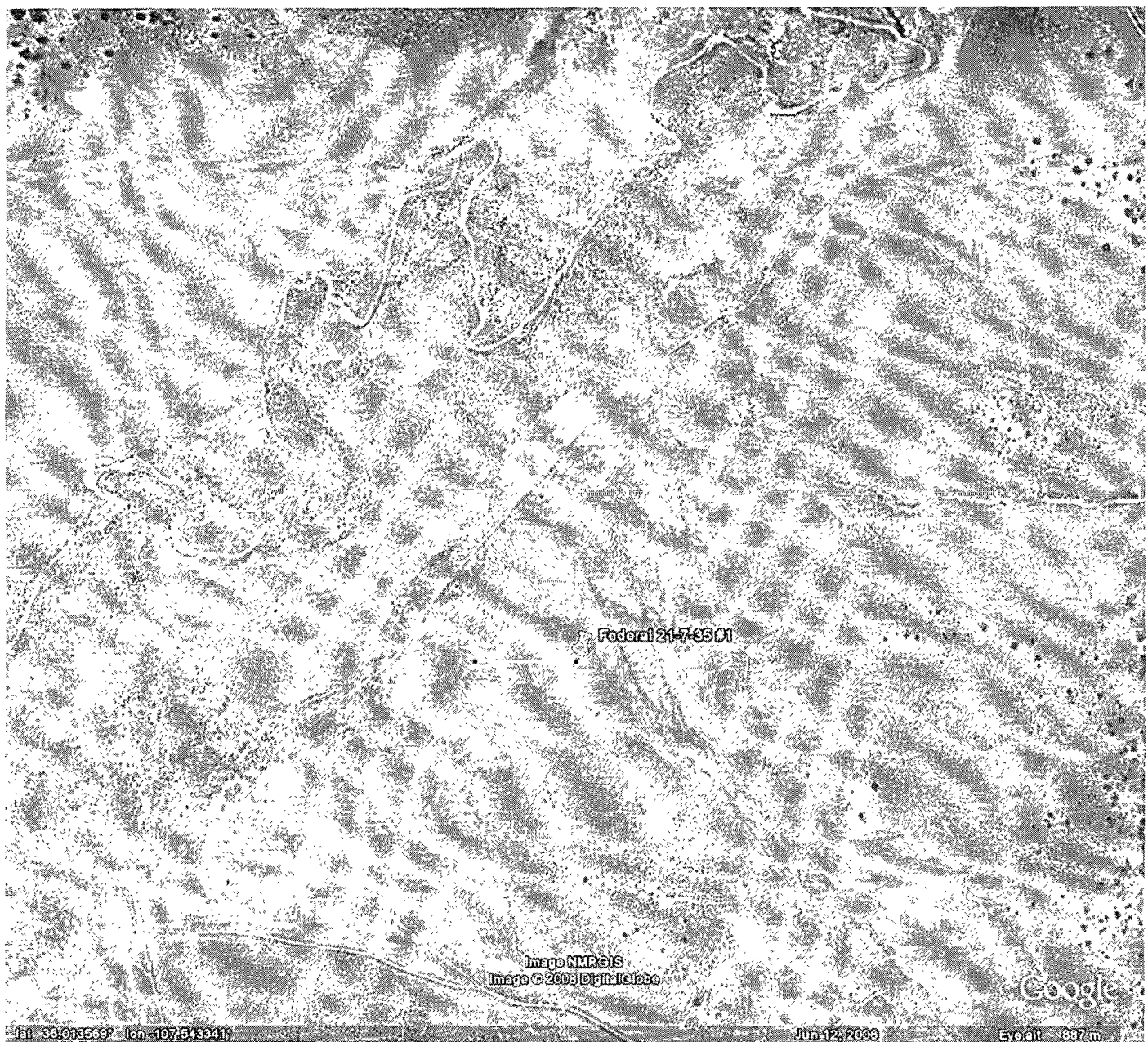
Federal 21-7-35/01

Image NMRGIS
Image © 2008 DigitalGlobe

Google

lat 33.013560° lon -107.33301°

Eye alt 2.05 km



- AERIAL PHOTO SHOWING NO STRUCTURES WITHIN 300' RADIUS
- NEAREST DRY WATERCOURSE IS MORE THAN 200' FROM WELL PAD



Federal 21-73571

THERE ARE NO WETLANDS WITHIN 500' OF WELLPAD

Wetland Types

- Estuarine and Marine Deepwater
- Estuarine and Marine Wetland
- Freshwater Emergent Wetland
- Freshwater Forested/Shrub Wetland
- Freshwater Pond
- Lake
- Other
- Riverine

Status Map

- Digital (vector data)
- Scan (raster data)
- Non-Digital (hardcopy only)
- No Data

Image © 2003 DigitalGlobe
Image NMRGIS

Google

lat: 36.012574° lon: -107.543164°

Jun 12, 2006

Eye alt: 1.03 km

Wetlands Certification

RE: Federal 21-7-35 #1

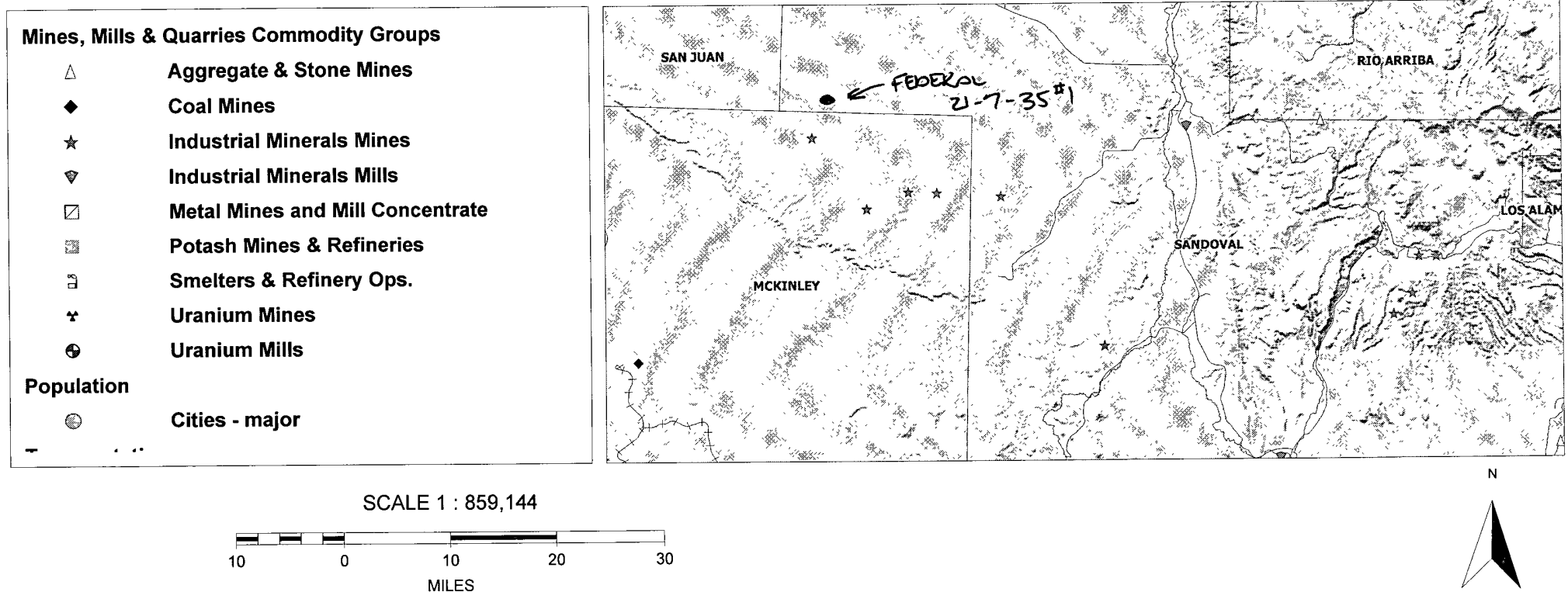
I William Schwab III certify that I have visually inspected the above well and that there are no wetlands with in a 500 foot radius.\

There is no data available from the US Fish and Wildlife identification map (attached) as to the existence of a wetland.

Signature: W. Schwab III

Date: 7/22/2008

MMQonline Public Version



Unstable Area

RE: Federal 21-7-35 #1

The well pad is not located near any surface mines or over any subsurface mines. The Soil consists of a clay sand mixture. The location has a 1' and a 2' cut and a 1' fill. The temporary drilling pit will be located in the cut of the cut side of the location.

Nika Energy Operating

Bill Liess
Bureau of Land Management, DOI
Farmington Field Office
1235 La Plata Highway, Suite A
Farmington, NM 87401

RE: Federal 21-7-35 #1, API # 30-043-21060

Bill,
This is a follow up certified letter as per the requirements of the new OCD pit rule 17 requiring notification to the surface owner that we are planning to close a temporary drilling pit on the subject location. After drilling operations cease, SGI plans to close the temporary pit per the approved APD and the new NMOCD rules.

Please let me know if you have any questions or if this notification needs to be directed to someone else.

Thank you for your time.



Tripp Schwab
President
Nika Energy Operating, LLC
Agent for SG Interests.

U.S. Postal Service
CERTIFIED MAIL™ RECEIPT
(Domestic Mail Only; No Insurance Coverage Provided)
For delivery information visit our website at www.usps.com

OFFICIAL USE

Postage	\$10.42
Certified Fee	\$2.70
Return Receipt Fee (Endorsement Required)	\$2.20
Restricted Delivery Fee (Endorsement Required)	\$0.00
	\$5.32

Total Po 0553 05

Sent To Attn: Mr. Bill Liess
Bureau of Land Mngement, DOI
Farmington Field Office
Street, Ap or PO Bo: 1235 La Plata Highway #A
City, State Farmington, NM 87401

Postmark Here
28 2008
07/28/2008
PS

DURANGO, CO 81301

PS Form 3800, August 2006

Tripp Schwab

From: Tripp Schwab [tripp@nikaenergy.com]
Sent: Wednesday, July 23, 2008 2:44 PM
To: Bill Liess (bill_liess@nm.blm.gov)
Subject: Pit Notifications

Subject(s): Federal 21-6-29 #1 API 30-043-21056
 Federal 21-6-29 #2 API 30-043-21057
 Federal 21-6-30 #1 API 30-043-21058
 Federal 21-6-30 #2 API 30-043-21059
 Federal 21-7-35 #1 API 30-043-21060

Bill,

The requirements of the new OCD pit rule 17 requires notification to the surface owner that we are planning to close a temporary drilling pit on the subject location(s) after drilling operations cease.
SGI plans to close the temporary pit(s) per approved BLM APD and NMOCD rules.
Please let me know if you have any questions or if this e-mail notification needs to be directed to someone else.
Thank you for your time,

Tripp Schwab
Nika Energy Operating
Agent for SG Interests I, Ltd.
970-259-2701 off
970-385-1598 fax

7/23/2008

SG Interests I, Ltd.

Temporary Pit - Closure Plan

Re: Federal 21-7-35 #1

All closure activities will include proper documentation and be available for review upon request and will be submitted to the NMOCD Aztec Division office within 60 days of pit closure. Closure report will be filed on form C-144 and incorporate the following:

Details on capping and covering (where applicable)

Plot Plan (Pit Diagram)

Inspection Reports

Sampling Results

C-105

Copy of Deed Notice filed with County Clerk

- 1 - All freestanding liquids will be removed at the start of the pit closure process from the pit and disposed of in a division approved facility or recycle, re-use or reclaim the liquids in a manner that the appropriate division district office approves. SGI plans to dispose of drilling fluids at Basin Disposal Inc., Permit # NM-01-005, unless otherwise noted.
- 2 - The method of closure for all temporary pits will be on-site burial as long as all the criteria listed in subsection B of 19.15.17.13 NMAC are met.
- 3 - The surface owner shall be notified of SGI closure plan using a means that provides proof of notice i.e., certified mail, return receipt requested or electronic mail with read receipt.
- 4 - Temporary pits will be closed, re-contoured, and re-seeded 6 months after drilling rig is released.
- 5 - "Notice of Closure" will be given to the NMOCD Aztec Division office, not less than seventy two (72) hours or more than one (1) week, of the closure via electronic mail or verbally. The "Notification of Closure" will include:
 - i. Operators Name
 - ii. Location by Unit Letter, Section, Township, and Range
 - iii. Well Name and API number.
- 6 - A five point composite sample will be taken of the pit using sampling tools and tested per 19.15.17.13.B.1.b. NMAC. Maximum limits for on-site burial are listed below:

Components	Test Method	Limit (mg/kg)
Benzene	EPA SW-846 8021B or 8260B	0.2
BTEX	EPA SW 846 8021B or 8260B	50
TPH	EPA SW 846 418.1	2500
GRO/DRO	EPA SW 846 8015M	500
Chlorides	EPA 300.1	1000

In the event the criteria are not met all contents and remediation will be handled per 19.15.17.13.B.1 NMAC. If ground water is 50'-100' below the bottom of the buried waste all limits are the same except the chloride limit is reduced to 500 mg/kg.

The sampling can be taken prior to mixing but if the contents exceed the parameters then contents must be sampled after mixing and meet the criteria before closure.

- 7 - Pit contents shall be mixed with non waste containing earth material in order to achieve the solidification process. The solidification process will be accomplished using a combination of natural drying and mechanical mixing. Pit contents will be mixed with non waste, earth material to a consistency that is deemed safe and stable. The mixing ratio shall not exceed 3 parts clean soil to 1 part pit contents.
- 8 - Liner of temporary pit will be removed above "mud level" after stabilization. Liner will be cut and all excessive liner will be removed and taken to a licensed disposal facility.
- 9 - Upon completion of solidification and satisfactory test results the pit area will be backfilled and compacted with non-waste earth material. A minimum of four feet of cover with the top foot (or background thickness of topsoil whichever is greater) suitable to establish vegetation at the site.
- 10 - The pit cover will be re-contoured and re-vegetated complying with subsections G,H,&I of 19.15.17.13 NMAC.
- 11 - Notification will be sent to NMOCD Aztec Division office when reseedling is completed.
- 12 - SGI will seed the disturbed areas the first growing season after the operator closes the pit. Seeding will be accomplished by drilling on the contour whenever practical or by other division approved methods. APD stipulated seed mixes will be used on Federal lands. Vegetative cover will equal 70% of the native perennial vegetative cover (unimpacted) consisting of at least three native plant species, including at least one grass, but not including noxious weeds. Seed cover will be maintained thru two consecutive growing seasons. Repeat seeding or planting will be continued until successive vegetative growth occurs.
- 13 - The closed temporary pit will have a steel marker no less than four inches in diameter, extending four feet above mean ground level, extending and cemented in a hole three feet deep, in the center of the onsite burial upon completion of the closing. The marker will be permanently welded, stamped or engraved to include the operator name, lease name, well name and number, unit number, section, township, range, and indicator that the marker is an onsite burial location. SGI reserves the right to install a temporary flat plate marker, one foot by two feet, with the same information if it is deemed necessary for safe operation on the wellsite during the productive life of the well. A full size marker will then be installed upon final abandonment.

h Dr., Hobbs, NM 88240

State of New Mexico
Energy, Minerals & Natural Resources Department

Form C-102

Revised October 12, 2005

Submit to Appropriate District Office

State Lease - 4 Copies

Fee Lease - 3 Copies

☐ AMENDED REPORT

1 W. Grand Avenue, Artesia, NM 88210

District III

1000 Rio Brazos Rd., Aztec, NM 87410

District IV

1220 S. St. Francis Dr., Santa Fe, NM 87505

OIL CONSERVATION DIVISION

1220 South St. Francis Dr.

Santa Fe, NM 87505

WELL LOCATION AND ACREAGE DEDICATION PLAT

API Number		Pool Code		Pool Name	
Property Code		Property Name FEDERAL 21-7-35			Well Number 1
GRID No.		Operator Name SG INTERESTS I. LTD.			Elevation 6645

10 Surface Location

UL or lot no. B	Section 35	Township 21N	Range 7W	Lot Idn	Feet from the 860	North/South line North	Feet from the 1725	East/West line East	County Sandoval
--------------------	---------------	-----------------	-------------	---------	----------------------	---------------------------	-----------------------	------------------------	--------------------

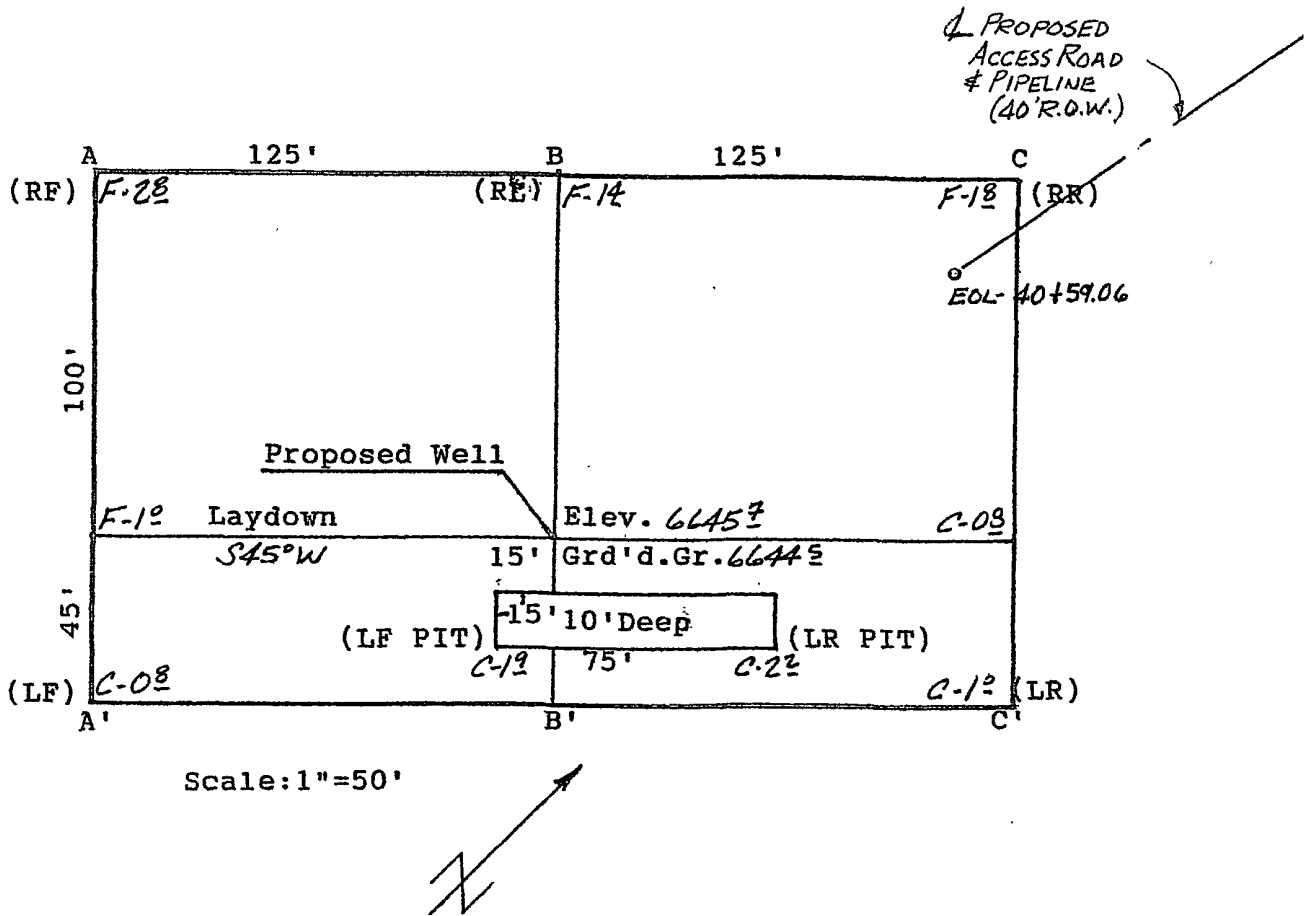
11 Bottom Hole Location If Different From Surface

UL or lot no.	Section	Township	Range	Lot Idn	Feet from the	North/South line	Feet from the	East/West line	County
Dedicated Acres		Joint or Infill		Consolidation Code		Order No.			

No allowable will be assigned to this completion until all interests have been consolidated or a non-standard unit has been approved by the division.

16 N 89°44' W 80.65 Ch. Lat. 36.01247° N Long. 107.54333° W Sec. 35 N 89°56' W 39.91 Ch. N 89°29' W 39.84 Ch.	79.90 Ch.	17 OPERATOR CERTIFICATION I hereby certify that the information contained herein is true and complete to the best of my knowledge and belief, and that this organization either owns a working interest or unleased mineral interest in the land including the proposed bottom hole location or has a right to drill this well at this location pursuant to a contract with an owner of such a mineral or working interest, or to a voluntary pooling agreement or a compulsory pooling order heretofore entered by the division. Signature: <i>William Schnob</i> Date: <i>12/1/07</i> Printed Name: William Schnob 18 SURVEYOR CERTIFICATION I hereby certify that the well location shown on this plat was plotted from field notes of actual surveys made by me or under my supervision, and that the same is true and correct to the best of my belief. Date of Survey: <i>19 Nov 2007</i> Signature and Seal of Professional Surveyor: <i>William E. Mahnke II</i> Certificate Number: <i>8466</i>
	860'	
	1725'	
	80.66 Ch.	

SG INTERESTS I, LTD.
 FEDERAL 21-7-35 #1
 860' FNL & 1725' FEL
 Sec.35, T21N, R7W, NMPM
 Sandoval Co., NM



A-A'	Vert.: 1"=30'	Horiz.: 1"=50'	C/L
6650			
6640			
B-B'			
6650			
6640			
C-C'			
6650			
6640			