

District I  
625 N. French Dr., Hobbs, NM 88240  
District II  
1301 W. Grand Avenue, Artesia, NM 88210  
District III  
1000 Rio Brazos Road, Aztec, NM 87410  
District IV  
1220 S. St. Francis Dr., Santa Fe, NM 87505

State of New Mexico  
Energy Minerals and Natural Resources  
Department  
Oil Conservation Division  
1220 South St. Francis Dr.  
Santa Fe, NM 87505

Form C-144  
June 16, 2008

For temporary pits, closed-loop systems, and below-grade tanks, submit to the appropriate NMOCD District Office.  
For permanent pits and exceptions submit to the Santa Fe Environmental Bureau office and provide a copy to the appropriate NMOCD District Office.

Pit, Closed-Loop System, Below-Grade Tank, or  
Proposed Alternative Method Permit or Closure Plan Application

Type of action: ☒ Permit of a pit, closed-loop system, below-grade tank, or proposed alternative method  
☐ Closure of a pit, closed-loop system, below-grade tank, or proposed alternative method

**Instructions:** Please submit one application (Form C-144) per individual pit, closed-loop system, below-grade tank or alternative request

Please be advised that approval of this request does not relieve the operator of liability should operations result in pollution of surface water, ground water or the environment. Nor does approval relieve the operator of its responsibility to comply with any other applicable governmental authority's rules, regulations or ordinances.

Operator: Energen Resources Corporation OGRID #: 162928  
Address: 2010 Afton Place, Farmington, New Mexico 87401  
Facility or well name: Carracas 21 B #1  
API Number: 30-039-30473 OCD Permit Number:                       
U/L or Qtr/Qtr SENW Section 21 Township 32N Range 4W County: Rio Arriba  
Center of Proposed Design: Latitude 36.97483°N Longitude 107.26512°W NAD: ☐ 1927 ☒ 1983  
Surface Owner: ☒ Federal ☐ State ☐ Private ☐ Tribal Trust or Indian Allotment

☒ **Pit:** Subsection F or G of 19.15.17.11 NMAC

Temporary: ☒ Drilling ☐ Workover

☐ Permanent ☐ Emergency ☐ Cavitation

☒ Lined ☐ Unlined

Liner type: Thickness 20 mil ☒ LLDPE ☐ HDPE ☐ PVC

☐ Other                      ☒ String-Reinforced

Seams: ☐ Welded ☒ Factory ☐ Other                     

Volume: 2000 bbl Dimensions: L 125 x W 90 x D 15

☐ **Closed-loop System:** Subsection H of 19.15.17.11 NMAC

☐ Drying Pad ☐ Tanks ☐ Haul-off Bins ☐ Other                     

☐ Lined ☐ Unlined

Liner type: Thickness                      mil ☐ LLDPE ☐ HDPE ☐ PVC

☐ Other                     

Seams: ☐ Welded ☐ Factory ☐ Other                     

Volume:                      bbl                      yd<sup>3</sup>

Dimensions: Length                      x Width                     

☐ **Below-grade tank:** Subsection I of 19.15.17.11 NMAC

Volume:                      bbl

Type of fluid:                     

Tank Construction material:                     

☐ Secondary containment with leak detection

☐ Visible sidewalls, liner, 6-inch lift and automatic overflow shut-off

☐ Visible sidewalls and liner

☐ Visible sidewalls only

☐ Other                     

Liner type: Thickness                      mil ☐ HDPE ☐ PVC

☐ Other                     

**Fencing:** Subsection D of 19.15.17.11 NMAC

☐ Chain link, six feet in height, two strands of barbed wire at top

☒ Four foot height, four strands of barbed wire evenly spaced between one and four feet

**Netting:** Subsection E of 19.15.17.11 NMAC

☐ Screen ☐ Netting ☐ Other                     

☐ Monthly inspections

**Signs:** Subsection C of 19.15.17.11 NMAC

☐ 12"x24', 2' lettering, providing Operator's name, site location, and emergency telephone numbers

☒ Signed in compliance with 19.15.3.103 NMAC

☐ **Alternative Method:**

Submittal of an exception request is required. Exceptions must be submitted to the Santa Fe Environmental Bureau office for consideration of approval.

**Administrative Approvals and Exceptions:**

Justifications and/or demonstrations of equivalency are required. Please refer to 19.15.17 NMAC for guidance.

**Please check a box if one or more of the following is requested, if not leave blank:**

☐ Administrative approval(s): Requests must be submitted to the appropriate division district or the Santa Fe Environmental Bureau office for consideration of approval.

☐ Exception(s): Requests must be submitted to the Santa Fe Environmental Bureau office for consideration of approval.

**Instructions:** The applicant must demonstrate compliance for each siting criteria below in the application. Recommendations of acceptable source material are provided below. Requests regarding changes to certain siting criteria may require administrative approval from the appropriate district office or may be considered an exception which must be submitted to the Santa Fe Environmental Bureau office for consideration of approval. Applicant must attach justification for request. Please refer to 19.15.17.10 NMAC for guidance. Siting criteria does not apply to drying pads or above-grade tanks associated with a closed-loop system.

Ground water is less than 50 feet below the bottom of the temporary pit, permanent pit, or below-grade tank. - NM Office of the State Engineer - iWATERS database search; USGS; Data obtained from nearby wells	<input type="checkbox"/> Yes <input checked="" type="checkbox"/> No
Within 300 feet of a continuously flowing watercourse, or 200 feet of any other watercourse, lakebed, sinkhole, or playa lake (measured from the ordinary high-water mark). - Topographic map; Visual inspection (certification) of the proposed site	<input type="checkbox"/> Yes <input checked="" type="checkbox"/> No
Within 300 feet from a permanent residence, school, hospital, institution, or church in existence at the time of initial application. (Applies to temporary, emergency, or cavitation pits and below-grade tanks) - Visual inspection (certification) of the proposed site; Aerial photo; Satellite image	<input type="checkbox"/> Yes <input checked="" type="checkbox"/> No <input type="checkbox"/> NA
Within 1000 feet from a permanent residence, school, hospital, institution, or church in existence at the time of initial application. (Applies to permanent pits) - Visual inspection (certification) of the proposed site; Aerial photo; Satellite image	<input type="checkbox"/> Yes <input type="checkbox"/> No <input checked="" type="checkbox"/> NA
Within 500 horizontal feet of a private, domestic fresh water well or spring that less than five households use for domestic or stock watering purposes, or within 1000 horizontal feet of any other fresh water well or spring, in existence at the time of initial application. - NM Office of the State Engineer - iWATERS database search; Visual inspection (certification) of the proposed site	<input type="checkbox"/> Yes <input checked="" type="checkbox"/> No
Within incorporated municipal boundaries or within a defined municipal fresh water well field covered under a municipal ordinance adopted pursuant to NMSA 1978, Section 3-27-3, as amended. - Written confirmation or verification from the municipality; Written approval obtained from the municipality	<input type="checkbox"/> Yes <input checked="" type="checkbox"/> No
Within 500 feet of a wetland. - US Fish and Wildlife Wetland Identification map; Topographic map; Visual inspection (certification) of the proposed site	<input type="checkbox"/> Yes <input checked="" type="checkbox"/> No
Within the area overlying a subsurface mine. - Written confirmation or verification or map from the NM EMNRD-Mining and Mineral Division	<input type="checkbox"/> Yes <input checked="" type="checkbox"/> No
Within an unstable area. - Engineering measures incorporated into the design; NM Bureau of Geology & Mineral Resources; USGS; NM Geological Society; Topographic map	<input type="checkbox"/> Yes <input checked="" type="checkbox"/> No
Within a 100-year floodplain. - FEMA map	<input type="checkbox"/> Yes <input checked="" type="checkbox"/> No

**Temporary Pits, Emergency Pits, and Below-grade Tanks Permit Application Attachment Checklist:** Subsection B of 19.15.17.9 NMAC

**Instructions:** Each of the following items must be attached to the application. Please indicate, by a check mark in the box, that the documents are attached.

- ☐ Hydrogeologic Report (Below-grade Tanks) - based upon the requirements of Paragraph (4) of Subsection B of 19.15.17.9 NMAC
- ☒ Hydrogeologic Data (Temporary and Emergency Pits) - based upon the requirements of Paragraph (2) of Subsection B of 19.15.17.9 NMAC
- ☒ Siting Criteria Compliance Demonstrations - based upon the appropriate requirements of 19.15.17.10 NMAC
- ☒ Design Plan - based upon the appropriate requirements of 19.15.17.11 NMAC
- ☒ Operating and Maintenance Plan - based upon the appropriate requirements of 19.15.17.12 NMAC
- ☒ Closure Plan - based upon the appropriate requirements of Subsection C of 19.15.17.9 NMAC and 19.15.17.13 NMAC

☐ Previously Approved Design (attach copy of design) API Number: \_\_\_\_\_ or Permit Number: \_\_\_\_\_

**Closed-loop Systems Permit Application Attachment Checklist:** Subsection B of 19.15.17.9 NMAC

**Instructions:** Each of the following items must be attached to the application. Please indicate, by a check mark in the box, that the documents are attached.

- ☐ Geologic and Hydrogeologic Data (required for on-site closure) - based upon the requirements of Paragraph (3) of Subsection B of 19.15.17.9
- ☐ Siting Criteria Compliance Demonstrations (required for on-site closure) - based upon the appropriate requirements of 19.15.17.10 NMAC
- ☐ Design Plan - based upon the appropriate requirements of 19.15.17.11 NMAC
- ☐ Operating and Maintenance Plan - based upon the appropriate requirements of 19.15.17.12 NMAC
- ☐ Closure Plan - based upon the appropriate requirements of Subsection C of 19.15.17.9 NMAC and 19.15.17.13 NMAC

NMAC

☐ Previously Approved Design (attach copy of design) API Number: \_\_\_\_\_

**Permanent Pits Permit Application Checklist:** Subsection B of 19.15.17.9 NMAC

**Instructions:** Each of the following items must be attached to the application. Please indicate, by a check mark in the box, that the documents are attached.

- ☐ Hydrogeologic Report - based upon the requirements of Paragraph (1) of Subsection B of 19.15.17.9 NMAC
- ☐ Siting Criteria Compliance Demonstrations - based upon the appropriate requirements of 19.15.17.10 NMAC
- ☐ Climatological Factors Assessment
- ☐ Certified Engineering Design Plans - based upon the appropriate requirements of 19.15.17.11 NMAC
- ☐ Dike Protection and Structural Integrity Design - based upon the appropriate requirements of 19.15.17.11 NMAC
- ☐ Leak Detection Design - based upon the appropriate requirements of 19.15.17.11 NMAC
- ☐ Liner Specifications and Compatibility Assessment - based upon the appropriate requirements of 19.15.17.11 NMAC
- ☐ Quality Control/Quality Assurance Construction and Installation Plan
- ☐ Operating and Maintenance Plan - based upon the appropriate requirements of 19.15.17.12 NMAC
- ☐ Freeboard and Overtopping Prevention Plan - based upon the appropriate requirements of 19.15.17.11 NMAC
- ☐ Nuisance or Hazardous Odors, including H<sub>2</sub>S, Prevention Plan
- ☐ Emergency Response Plan
- ☐ Oil Field Waste Stream Characterization
- ☐ Monitoring and Inspection Plan
- ☐ Erosion Control Plan
- ☐ Closure Plan - based upon the appropriate requirements of Subsection C of 19.15.17.9 NMAC and 19.15.17.13 NMAC

**Proposed Closure:** 19.15.17.13 NMAC

Type: ☒ Drilling ☐ Workover ☐ Emergency ☐ Cavitation ☐ Permanent Pit ☐ Below-grade Tank ☐ Closed-loop System ☐ Alternative

Proposed Closure Method: ☐ Waste Excavation and Removal  
☒ On-site Closure Method (only for temporary pits and closed-loop systems)  
☒ In-place Burial ☐ On-site Trench Burial  
☐ Alternative Closure Method (Exceptions must be submitted to the Santa Fe Environmental Bureau for consideration)

**Siting Criteria (regarding on-site closure methods only):** 19.15.17.10 NMAC

**Instructions:** Each siting criteria requires a demonstration of compliance in the closure plan. Recommendations of acceptable source material are provided below. Requests regarding changes to certain siting criteria may require administrative approval from the appropriate district office or may be considered an exception which must be submitted to the Santa Fe Environmental Bureau office for consideration of approval. Justifications and/or demonstrations of equivalency are required. Please refer to 19.15.17.10 NMAC for guidance.

Ground water is less than 50 feet below the bottom of the buried waste.

- NM Office of the State Engineer - iWATERS database search; USGS; Data obtained from nearby wells

☐ Yes ☒ No  
☐ NA

Ground water is between 50 and 100 feet below the bottom of the buried waste

- NM Office of the State Engineer - iWATERS database search; USGS; Data obtained from nearby wells

☐ Yes ☒ No  
☐ NA

Ground water is more than 100 feet below the bottom of the buried waste.

- NM Office of the State Engineer - iWATERS database search; USGS; Data obtained from nearby wells

☒ Yes ☐ No  
☐ NA

Within 300 feet of a continuously flowing watercourse, or 200 feet of any other watercourse, lakebed, sinkhole, or playa lake (measured from the ordinary high-water mark).

- Topographic map; Visual inspection (certification) of the proposed site

☐ Yes ☒ No

Within 300 feet from a permanent residence, school, hospital, institution, or church in existence at the time of initial application.

- Visual inspection (certification) of the proposed site; Aerial photo; Satellite image

☐ Yes ☒ No

Within 500 horizontal feet of a private, domestic fresh water well or spring that less than five households use for domestic or stock watering purposes, or within 1000 horizontal feet of any other fresh water well or spring, in existence at the time of initial application.

- NM Office of the State Engineer - iWATERS database; Visual inspection (certification) of the proposed site

☐ Yes ☒ No

Within incorporated municipal boundaries or within a defined municipal fresh water well field covered under a municipal ordinance adopted pursuant to NMSA 1978, Section 3-27-3, as amended.

- Written confirmation or verification from the municipality; Written approval obtained from the municipality

☐ Yes ☒ No

Within 500 feet of a wetland.

- US Fish and Wildlife Wetland Identification map; Topographic map; Visual inspection (certification) of the proposed site

☐ Yes ☒ No

Within the area overlying a subsurface mine.

- Written confirmation or verification or map from the NM EMNRD-Mining and Mineral Division

☐ Yes ☒ No

Within an unstable area.

- Engineering measures incorporated into the design; NM Bureau of Geology & Mineral Resources; USGS; NM Geological Society; Topographic map

☐ Yes ☒ No

Within a 100-year floodplain.

- FEMA map

☐ Yes ☒ No

**Waste Excavation and Removal Closure Plan Checklist:** (19.15.17.13 NMAC) **Instructions:** Each of the following items must be attached to the closure plan. Please indicate, by a check mark in the box, that the documents are attached.

- ☐ Protocols and Procedures - based upon the appropriate requirements of 19.15.17.13 NMAC
- ☐ Confirmation Sampling Plan (if applicable) - based upon the appropriate requirements of Subsection F of 19.15.17.13 NMAC
- ☐ Disposal Facility Name and Permit Number (for liquids, drilling fluids and drill cuttings)
- ☐ Soil Backfill and Cover Design Specifications - based upon the appropriate requirements of Subsection H of 19.15.17.13 NMAC
- ☐ Re-vegetation Plan - based upon the appropriate requirements of Subsection I of 19.15.17.13 NMAC
- ☐ Site Reclamation Plan - based upon the appropriate requirements of Subsection G of 19.15.17.13 NMAC

**Waste Removal Closure For Closed-loop Systems That Utilize Haul-off Bins Only:** (19.15.17.13.D NMAC) **Instructions:** Please identify the facility or facilities for the disposal of liquids, drilling fluids and drill cuttings.

Disposal Facility Name: \_\_\_\_\_

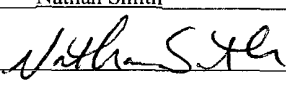
Disposal Facility Permit Number: \_\_\_\_\_

**On-Site Closure Plan Checklist:** (19.15.17.13 NMAC) **Instructions:** Each of the following items must be attached to the closure plan. Please indicate, by a check mark in the box, that the documents are attached.

- ☒ Siting Criteria Compliance Demonstrations - based upon the appropriate requirements of 19.15.17.10 NMAC
- ☒ Proof of Surface Owner Notice - based upon the appropriate requirements of Subsection F of 19.15.17.13 NMAC
- ☐ Construction and Design of Burial Trench (if applicable) based upon the appropriate requirements of 19.15.17.11 NMAC
- ☒ Protocols and Procedures - based upon the appropriate requirements of 19.15.17.13 NMAC
- ☒ Confirmation Sampling Plan (if applicable) - based upon the appropriate requirements of Subsection F of 19.15.17.13 NMAC
- ☒ Waste Material Sampling Plan - based upon the appropriate requirements of Subsection F of 19.15.17.13 NMAC
- ☒ Disposal Facility Name and Permit Number (for liquids, drilling fluids and drill cuttings or in case on-site closure standards cannot be achieved)
- ☒ Soil Cover Design - based upon the appropriate requirements of Subsection H of 19.15.17.13 NMAC
- ☒ Re-vegetation Plan - based upon the appropriate requirements of Subsection I of 19.15.17.13 NMAC
- ☒ Site Reclamation Plan - based upon the appropriate requirements of Subsection G of 19.15.17.13 NMAC

**Operator Application Certification:**

I hereby certify that the information submitted with this application is true, accurate and complete to the best of my knowledge and belief.

Name (Print): Nathan Smith Title: Drilling Engineer  
Signature:  Date: 7/1/08  
e-mail address: nsmith@energen.com Telephone: 505-324-4151

**OCD Approval:** ☒ Permit Application (including closure plan) ☐ Closure Plan (only)

OCD Representative Signature:  Approval Date: 7/10/08  
Title: Enviro / spec OCD Permit Number: \_\_\_\_\_

**Closure Report (required within 60 days of closure completion):** Subsection K of 19.15.17.13 NMAC

☐ Closure Completion Date: \_\_\_\_\_

**Closure Method:**

☐ Waste Excavation and Removal ☐ On-Site Closure Method ☐ Alternative Closure Method  
☐ If different from approved plan, please explain.

**Closure Report Attachment Checklist:** *Instructions: Each of the following items must be attached to the closure report. Please indicate, by a check mark in the box, that the documents are attached.*

- ☐ Proof of Closure Notice
- ☐ Proof of Deed Notice (if applicable)
- ☐ Plot Plan
- ☐ Confirmation Sampling Analytical Results
- ☐ Waste Material Sampling Analytical Results
- ☐ Disposal Facility Name and Permit Number
- ☐ Soil Backfilling and Cover Installation
- ☐ Re-vegetation Application Rates and Seeding Technique
- ☐ Site Reclamation (Photo Documentation)

On-site Closure Location: Latitude \_\_\_\_\_ Longitude \_\_\_\_\_ NAD: ☐ 1927 ☐ 1983

**Operator Closure Certification:**

I hereby certify that the information and attachments submitted with this closure report is true, accurate and complete to the best of my knowledge and belief. I also certify that the closure complies with all applicable closure requirements and conditions specified in the approved closure plan.

Name (Print): \_\_\_\_\_ Title: \_\_\_\_\_  
Signature: \_\_\_\_\_ Date: \_\_\_\_\_  
e-mail address: \_\_\_\_\_ Telephone: \_\_\_\_\_

#### Hydrogeologic Data:

##### 100-year Floodplain:

There is no map available from FEMA depicting a 100-year floodplain for the subject well, Carracas 21 B #1 located in that portion of the Carson National Forest, Jicarilla Ranger District in Rio Arriba County, NM.

##### Site Specific:

The San Jose formation is the highest water bearing zone at this site with the exception of possible perched water. It is the youngest Tertiary bedrock unit in the San Basin. The formation occurs at the surface to a depth of 2,320' at the Carracas 21 B #1 location and ranges from 2,100' to 2,800' in this township and range. The only potentially unstable areas in the region are over subsurface coal mines. This pit will not be located over a subsurface mine.

The bottom of Devils Canyon is 1,578 feet east and is 267 vertical feet below the pit location indicating the highest potential groundwater to be at least 267' below the pit bottom at this point. Tio Quinto Canyon is to the west and is 1,564' with a vertical depth of 428 vertical feet indicating that the highest potential groundwater to pit bottom is 428' at this point. A visual inspection was also conducted to identify the possibility of water wells with windmills or other pumping equipment or other visual indications and none were observed. No other water well sites within 1000' were indicated being present by the USFS, Jicarilla Ranger District.

##### Excavated Soil Storage:

The soil excavated for the proposed temporary drilling reserve pit will be stored on location and will be more than 300 feet of a continuously flowing watercourse, or 200 feet of any other watercourse, lakebed, sinkhole, or playa lake.

##### Geologic Summary:

The San Jose is a sequence of interbedded sandstones and mudstones deposited in an alluvial and fluvial environment. The formation accumulated in broad, wet, alluvial aprons. Groundwater is associated with the alluvial and fluvial sandstone aquifers, hence it is controlled by the distribution of these sands. The San Jose can further be broken into four members: Cuba Mesa, Regina, Llaves, and Tapicitos (in ascending order). The first two, Cuba Mesa and Regina, are predominately sandstone and the latter two, Llaves and Tapicitos, are predominately mudstone.



##### Reference:

Stone W.J., Lyford F.P., Frenzel P.F., Mizell N.H., and Padgett E.T.: Hydrology and water resources of San Juan Basin, New Mexico Hydrologic Report 6, 1983.

**New Mexico Office of the State Engineer  
POD Reports and Downloads**

Township: 32N Range: 04W Sections: 21

NAD27 X: Y: Zone:  Search Radius:

County: RA  Basin: SJ( San Juan)  Number: Suffix:

Owner Name: (First)  (Last)  ☐ Non-Domestic ☐ Domestic ☒ All

POD / Surface Data Report

Avg Depth to Water Report

Water Column Report

Clear Form

iWATERS Menu

Help

**WATER COLUMN REPORT 07/01/2008**

(quarters are 1=NW 2=NE 3=SW 4=SE)

(quarters are biggest to smallest)

POD Number	Tws	Rng	Sec	q	q	q	Zone	X	Y	Depth Well	Depth Water	Water (in feet) Column
------------	-----	-----	-----	---	---	---	------	---	---	---------------	----------------	---------------------------

No Records found, try again

DISTRICT I  
1625 N. French Dr., Hobbs, N.M. 88240

State of New Mexico  
Energy, Minerals & Natural Resources Department

Form C-102  
Revised October 12, 2005

DISTRICT II  
1301 W. Grand Avenue, Artesia, N.M. 88210

Submit to Appropriate District Office  
State Lease - 4 Copies  
Fee Lease - 3 Copies

DISTRICT III  
1000 Rio Brazos Rd., Aztec, N.M. 87410

OIL CONSERVATION DIVISION  
1220 South St. Francis Dr.  
Santa Fe, NM 87505

DISTRICT IV  
1220 S. St. Francis Dr., Santa Fe, NM 87505

☐ AMENDED REPORT

WELL LOCATION AND ACREAGE DEDICATION PLAT

<sup>1</sup> API Number	<sup>2</sup> Pool Code 71629	<sup>3</sup> Pool Name Basin Fruitland Coal
<sup>4</sup> Property Code 35661	<sup>5</sup> Property Name CARRACAS 21B	<sup>6</sup> Well Number 1
<sup>7</sup> GRID No. 162928	<sup>8</sup> Operator Name ENERGEN RESOURCES CORPORATION	<sup>9</sup> Elevation 7335'

<sup>10</sup> Surface Location

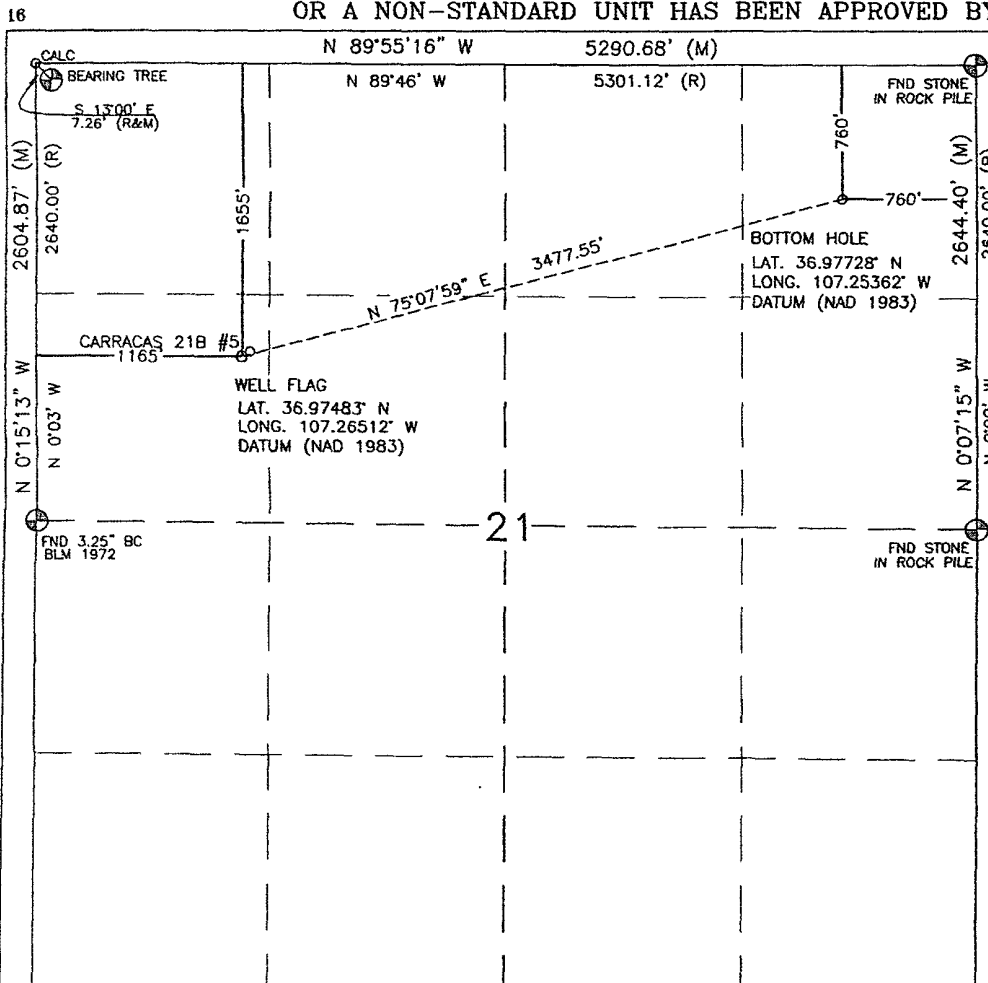
UL or lot no.	Section	Township	Range	Lot Idn	Feet from the	North/South line	Feet from the	East/West line	County
E	21	32N	4W		1655'	NORTH	1165'	WEST	RIO ARriba

<sup>11</sup> Bottom Hole Location If Different From Surface

UL or lot no.	Section	Township	Range	Lot Idn	Feet from the	North/South line	Feet from the	East/West line	County
A	21	32N	4W		760'	NORTH	760'	EAST	RIO ARriba

<sup>12</sup> Dedicated Acres	<sup>13</sup> Joint or Infill	<sup>14</sup> Consolidation Code	<sup>15</sup> Order No.
-------------------------------	-------------------------------	----------------------------------	-------------------------

NO ALLOWABLE WILL BE ASSIGNED TO THIS COMPLETION UNTIL ALL INTERESTS HAVE BEEN CONSOLIDATED  
OR A NON-STANDARD UNIT HAS BEEN APPROVED BY THE DIVISION



17 OPERATOR CERTIFICATION

I hereby certify that the information contained herein is true and complete to the best of my knowledge and belief, and that this organization either owns a working interest or unleased mineral interest in the land including the proposed bottom hole location or has a right to drill this well at this location pursuant to a contract with an owner or a compulsory pooling order heretofore entered by the division.

*Nathan Smith* 7/1/08  
Signature Date

*Nathan Smith*  
Printed Name

18 SURVEYOR CERTIFICATION

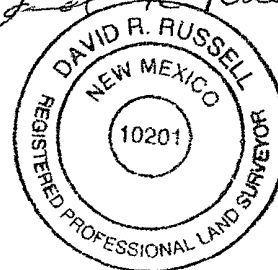
I hereby certify that the well location shown on this plat was plotted from field notes of actual surveys made by me or under my supervision, and that the same is true and correct to the best of my belief.

JUNE 27, 2007

Date of Survey

Signature and Seal of Professional Surveyor:

*David R. Russell*



DAVID RUSSELL

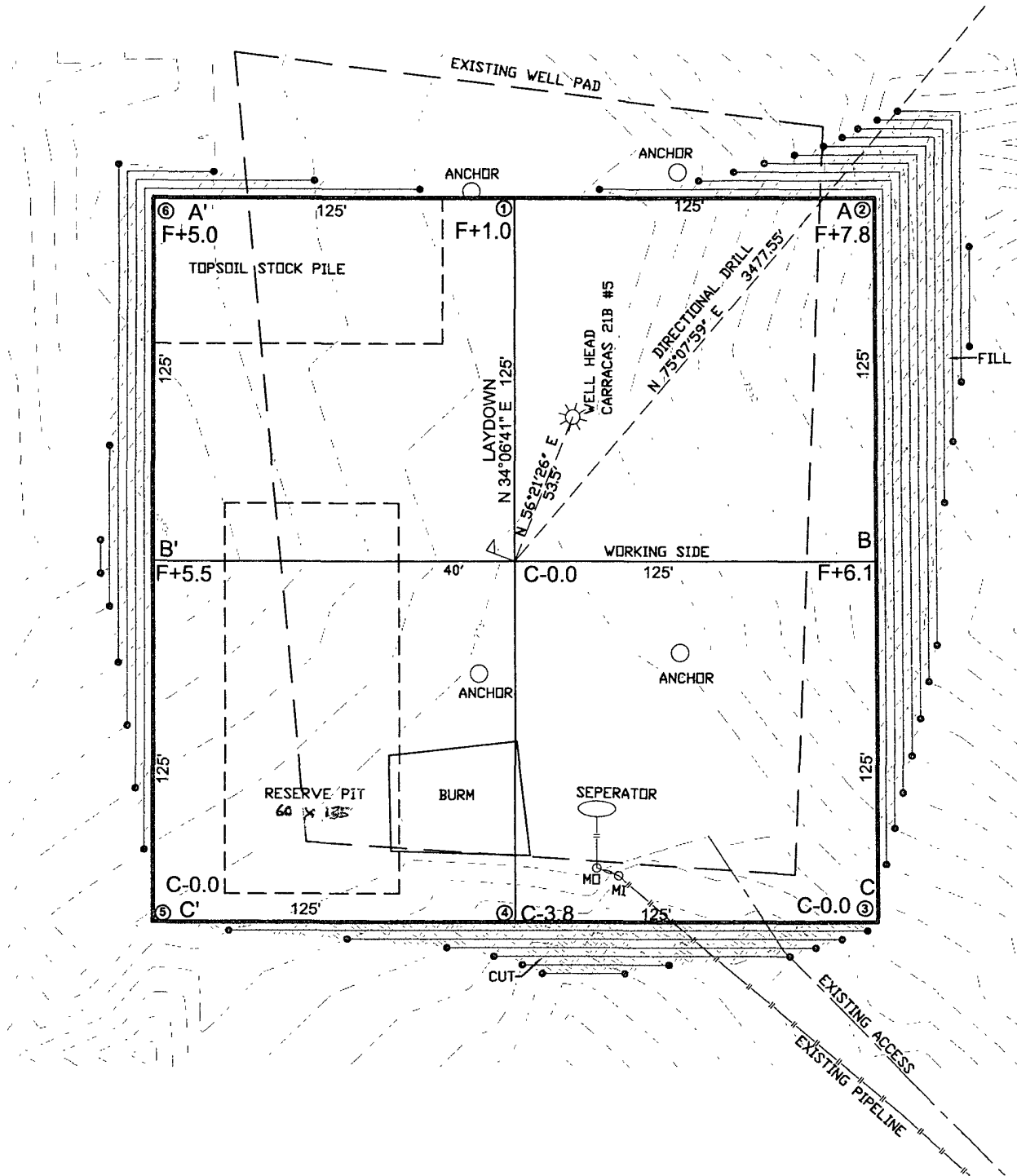
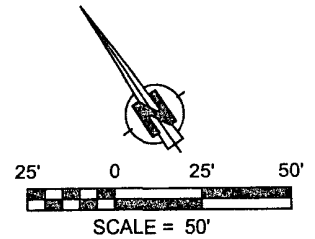
Certificate Number 10201



LATITUDE: 36.97483°N  
LONGITUDE: 107.26512°W  
DATUM: NAD 83

# ENERGEN RESOURCES CORPORATION

CARRACAS 21B #1  
1655' FNL & 1165' FWL  
LOCATED IN THE SW/4 NW/4 OF SECTION 21,  
T32N, R4W, N.M.P.M.,  
RIO ARriba COUNTY, NEW MEXICO  
GROUND ELEVATION: 7335', NAVD 88  
FINISHED PAD ELEVATION: 7335.2, NAVD 88



1 FOOT CONTOUR INTERVAL SHOWN  
SCALE: 1" = 50'  
JOB No.: ERG171  
DATE: 07/20/07



**Russell Surveying**  
1409 W. Aztec Blvd. #2  
Aztec, New Mexico 87410  
(505) 334-8637

## Temporary Pit Design Plan:

The pit will be designed and constructed in the following manner:

- 1) Top soil will be stripped, stockpiled and stored as designated on the attached well sight layout schematic. Storage will be in accordance with the requirements set forth as described in item B of the the siting requirements of 19.15.17.11 NMAC.
- 2) A sign will be posted on location in accordance with 19.15.3.103 NMAC.
- 3) A four strand barbwire fence will be constructed around the perimeter of the pit with the strands evenly spaced between one and four feet from the ground. This fence will be used to excluded livestock from inadvertently entering the pit. The side of the fence adjacent to the rig will be removed during operations. This fence if located within 1000 feet of a permanent residence, school, hospital, institution or church will be a six foot chain link fence with two strands of barbed wire at the top.
- 4) The pit will be designed to confine liquids, prevent unauthorized releases by constructing a foundation with interior slopes consisting of a firm and unyielding base that are smooth and free of rocks, debris or other sharp edges to prevent liner damage.
- 5) The slopes will be constructed with a 2:1 ratio of vertical to horizontal with a changing slope within five feet of the shale shakers trending towards horizontal.
- 6) The volume of the pit will no exceed 10 acre feet including freeboard.
- 7) The pit will be lined with a LLDPE geomembrane liner with a thickness of no less then 20mm. The liner material will be compatible with EPA SW-846 method 9090A.
- 8) Liner seams will be orientated perpendicular to the largest slope with an overlap of four to six inches.
- 9) If needed a geotextile will be place under the liner to reduce localized stress-strain that may compromise liner integrity.
- 10) The edges of the liner will be anchored in the bottom of a compacted earth-filled trench no less the 18 inches deep.
- 11) To prevent runon of surface water a berm no less then 12 inches high will be constructed around the perimeter of the pit. With drainage ditches being directed to the runoff requirements set forth in the APD Condition of Approval.

#### Temporary Pit Operations Plan:

The pit will be operated and maintained; to contain liquids and solids, to insure liner and secondary containment integrity, to aid in the prevention of contamination of fresh water sources, in order to protect public health and the environment. To attain this goal the following steps will be followed;

- 1) The fluids in the pit remaining after rig release will be vacuumed out and transported to active drilling locations to be reused or disposed of with Agua Moss LLC in the Pretty Lady #1 (Disposal API Number # 30-048-30922) within 30 days. Residual fluids after vacuuming will be allowed to evaporate.
- 2) No hazardous waste, miscellaneous solid waste or debris will be discharged into or stored in the pit. Only fluids or cuttings used or generated in the drilling process will be placed or stored in the pit.
- 3) The division district office will be notified within 48 hrs of the discovery of compromised liner integrity. Upon the discovery of the compromised liner repairs will be enacted immediately.
- 4) The division district office will be notified within 48 hrs of the discovery of compromised liner integrity below the fluid level unless more than 25 bbls is released in which case Rule 116's 24 hr notification will apply. All liquid above the damaged liner section will be removed to a level below the damage within 48 hrs and repairs will be enacted.
- 5) Precautionary measures will be taken to insure no liner damage is caused when adding or removing fluids and solids from the pit. This will be accomplished by gradually increasing the slope of the pit from negligible underneath the shale shakers to the 2:1 ratio required by 19.15.17.11 within five feet. A perforated pipe will be installed in the corner of the pit so that a vacuum hose can be run through it to remove fluids without damaging the liner.
- 6) Perimeter berms and ditches will be constructed around the exterior of the pit to prevent surface water run-on but the rig side may be left open to allow location drainage.
- 7) A oil absorbent boom will be maintained on site to remove oil from the pit's surface if necessary. Immediately on the cessation of drilling any accumulated oil will be removed from the surface of the pit.
- 8) A minimum of two feet of freeboard will be maintained at all times. Once fluid levels have the possibility of rising above the minimum freeboard fluid will be vacuumed out of the pit.
- 9) All of the above operations will be inspected and a log will be signed and dated. During drilling operations the inspection will be daily and after rig release they will be carried out weekly as long as there is fluid in the pit.

### Temporary Pit Closure Plan:

The pit will be closed with in place burial. The surface owner will be notified prior to closure by certified mail and the return receipt will be included in the closure packet. The OCD will be verbally or by other means notified at least 72 hours and not more than one week prior to the pit closing. The following process will be used to close the pit:

- 1) At time of closure, all free standing fluids will be removed and the contents will be solidified to a bearing capacity sufficient to support the final cover. This will be accomplished by mixing the contents with soil at a mixing ratio no greater than 3:1 soil to contents.
- 2) The liner will be cut off at the mudline.
- 3) Sampling will be done by collecting a minimum of a five-point composite sample of the contents after stabilization. If the ground water is less than 100 feet below the pit but greater than 50 feet testing for Chlorides will be done to the lower limit. The sample will be analyzed for the following components;

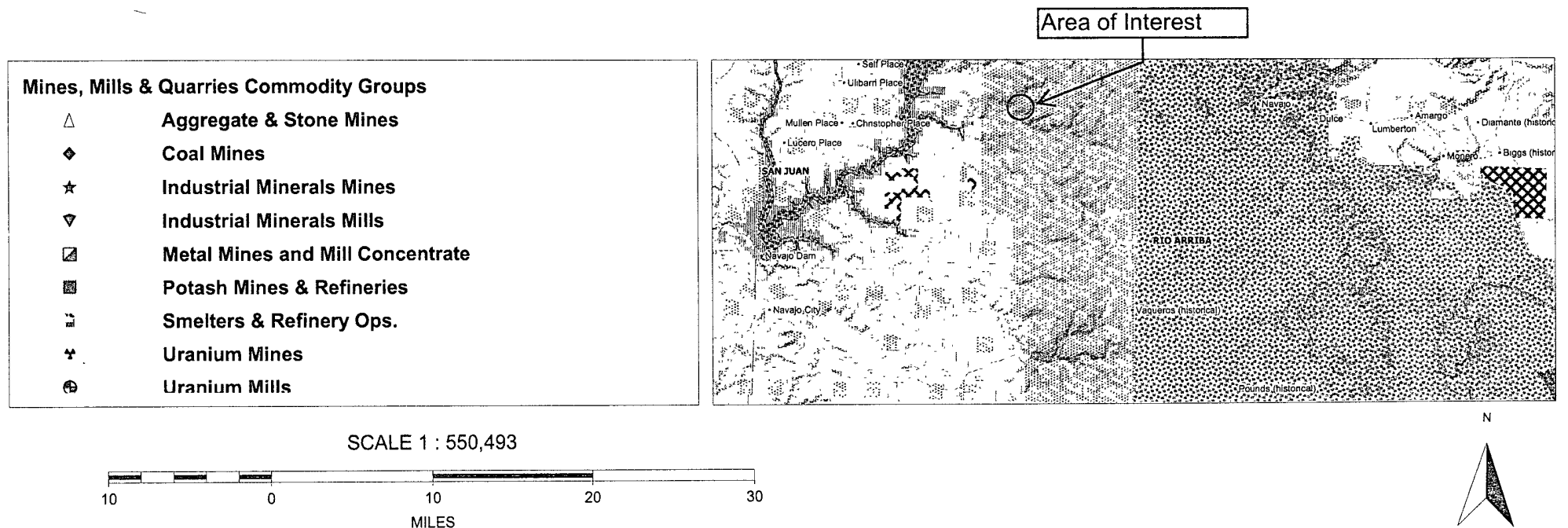
Components	Tests Method	Limit (mg/Kg)
Benzene	EPA SW-846 8021B or 8260B	0.2
BTEX	EPA SW-846 8021B or 8260B	50
TPH	EPA SW-846 418.1	2500
GRO/DRO	EPA SW-846 8015M	500
Chlorides	EPA 300.1	1000/500

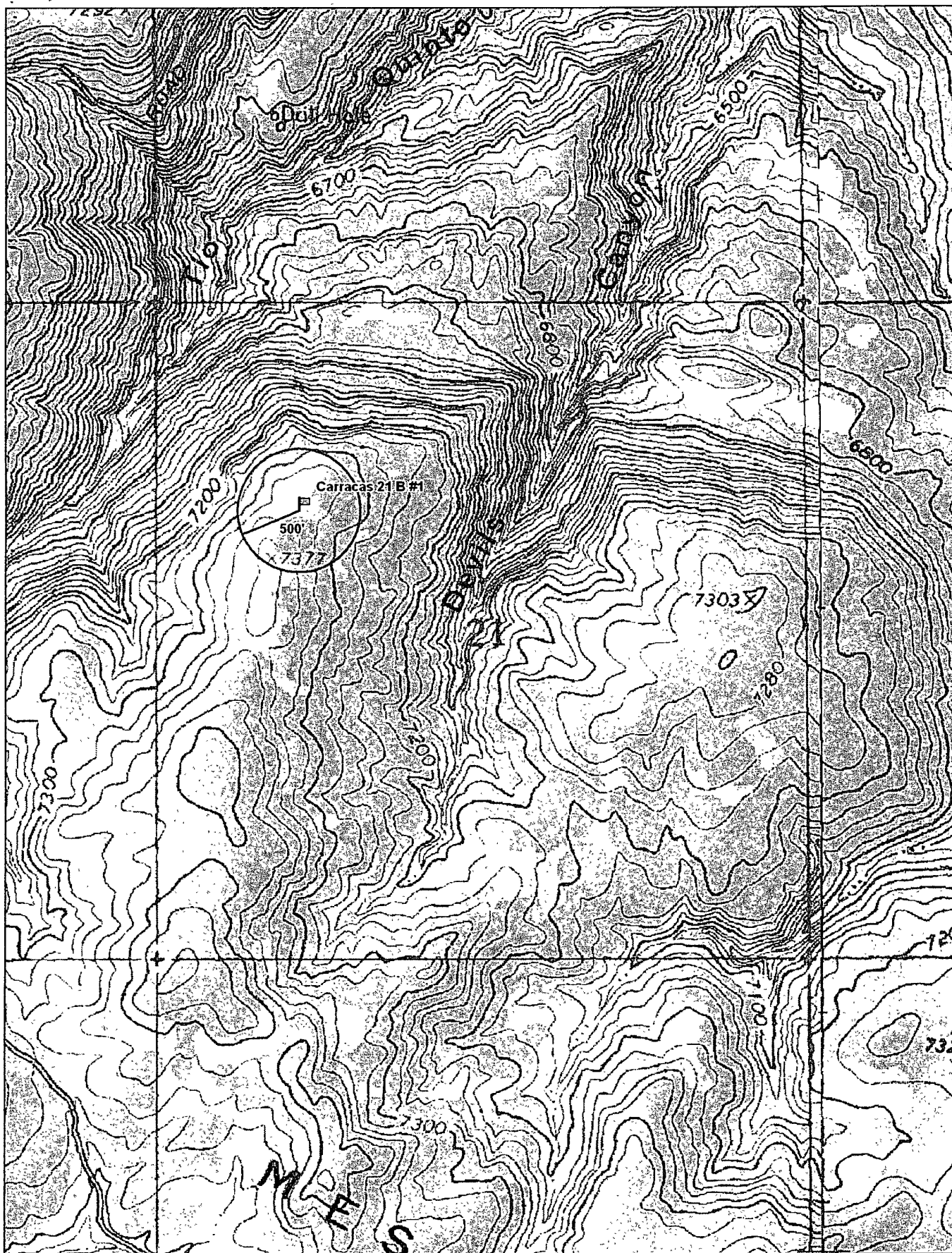
- 4) After demonstrating that the stabilized contents are under the limits listed above the contents will be covered with compacted non-waste containing earthen material to a minimum of three feet. If stabilized contents exceed a volume that can be covered with three feet of earth and a foot of topsoil the excess contents will be removed and sent to Envirotech (Permit NM-01-0011). If the stabilized contents do not meet the above stated limits the stabilized contents will all be hauled to Envirotech pursuant to excavation and removal guidelines (19.15.17.13 B1)
- 5) After the stabilized contents have been covered, the stockpiled topsoil will be replaced to a minimum depth of one foot. Topsoil cover will be graded to prevent ponding of water and erosion of the cover material while matching pre-existing grade when possible. This will be accomplished within six months of rig release.
- 6) The exact location of the on-site burial will be reported to the Aztec field office on the C-105 form. A deed notice identifying the exact location of the on-site burial will be filed with the county clerk. The final closure report (C-144) will be filled within 60 days of closure completion and include sampling results, plot plan, details on back filling, covering and inspections during the life of the pit.
- 7) The disturbed area will be seeded or planted the first growing season after closing the pit. Seed will be drilled on the contour whenever practical or by other division-approved methods. The being to obtain vegetative cover that equals 70% of the native cover (un-impacted by overgrazing, fire or other intrusion damaging to native vegetation) consisting of at least three native

Cover will be maintained through two successive growing seasons. During the two growing seasons that prove viability there shall be no artificial irrigation of the vegetation. Seeding or planting will continue until the required cover is reached. If conditions are not favorable to establishment of vegetation due to periods of drought or similar problems then the Aztec office of the OCD will be notified. The Aztec office of the OCD will also be notified when the disturbed ground successfully achieves re-vegetation.

- 8) Until the abandonment of the wells on the pad where the pit is located a steel marker no less than four inches in diameter will be cemented in a hole three feet deep in the center of the onsite burial. The top of this marker will be flush with the ground with a threaded collar for future abandonment use to allow access of the pad and for safety concerns. On top of this marker, a steel 12 inch square plate indicating onsite burial will be intermittent welded to the top of the collar to allow easy removal at time of the well being abandoned. Once all wells on the pad are abandoned a four foot tall riser will be threaded into the top of the marker and circumferential welded around the base with; operator name, lease name, well name and number, unit number, section, township and range, and a designation that it is an onsite burial location.

# MMQonline Public Version



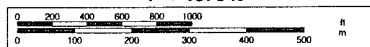


**DELORME**

© 2002 DeLorme, 3-D TopoQuads®. Data copyright of content owner.  
www.delorme.com

Scale 1 : 12,800

1" = 1070 ft




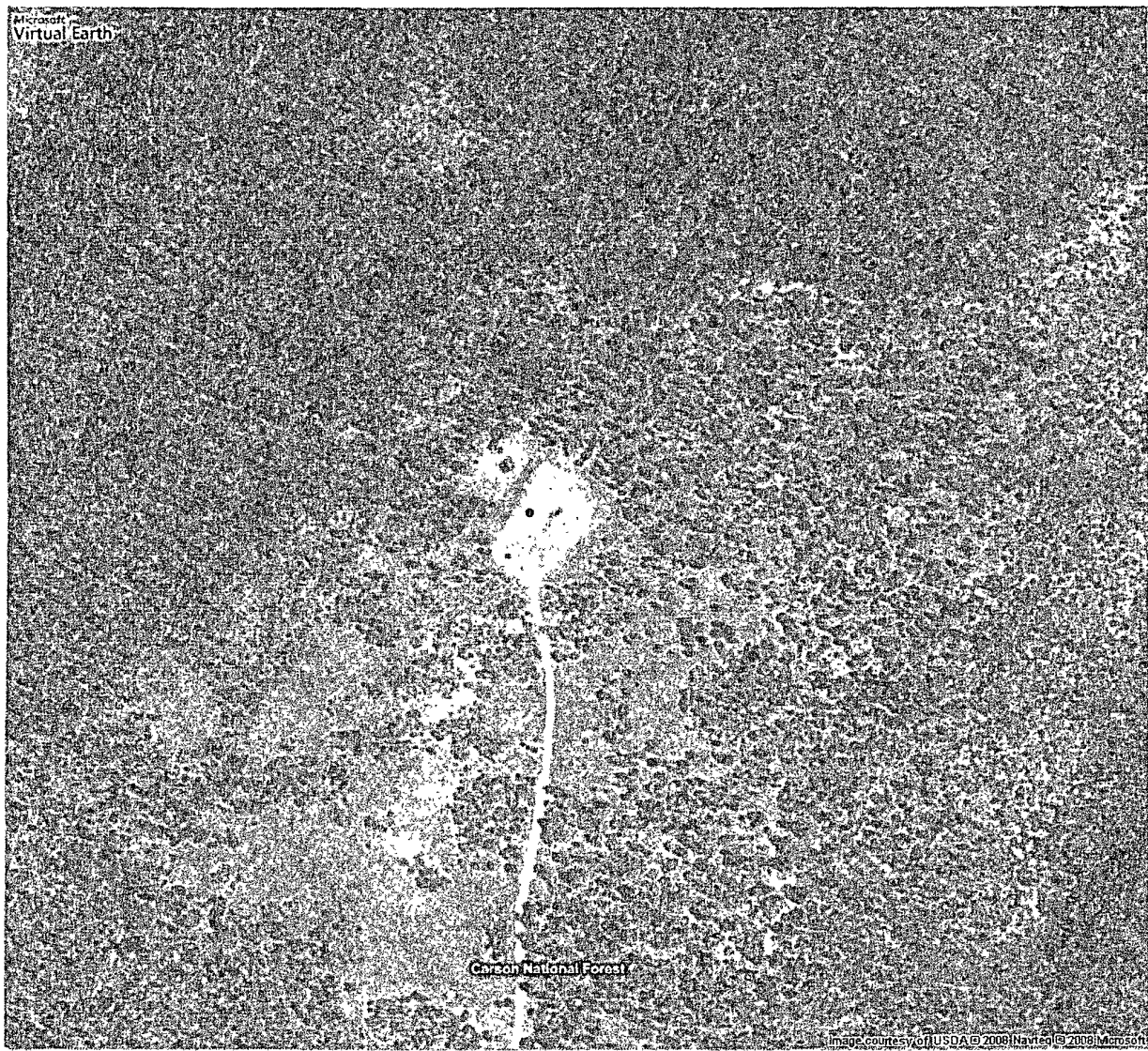
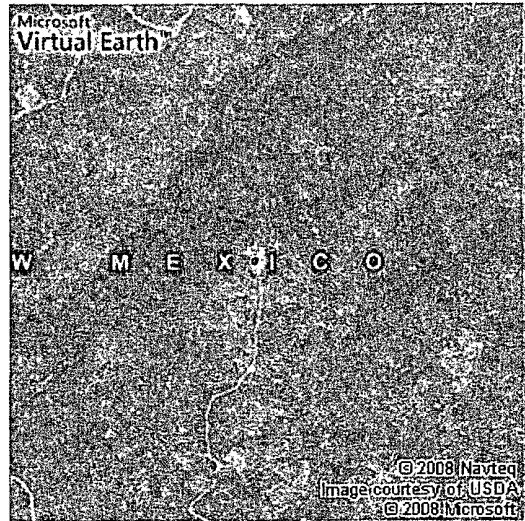
TN  
★  
MN  
11 0'E



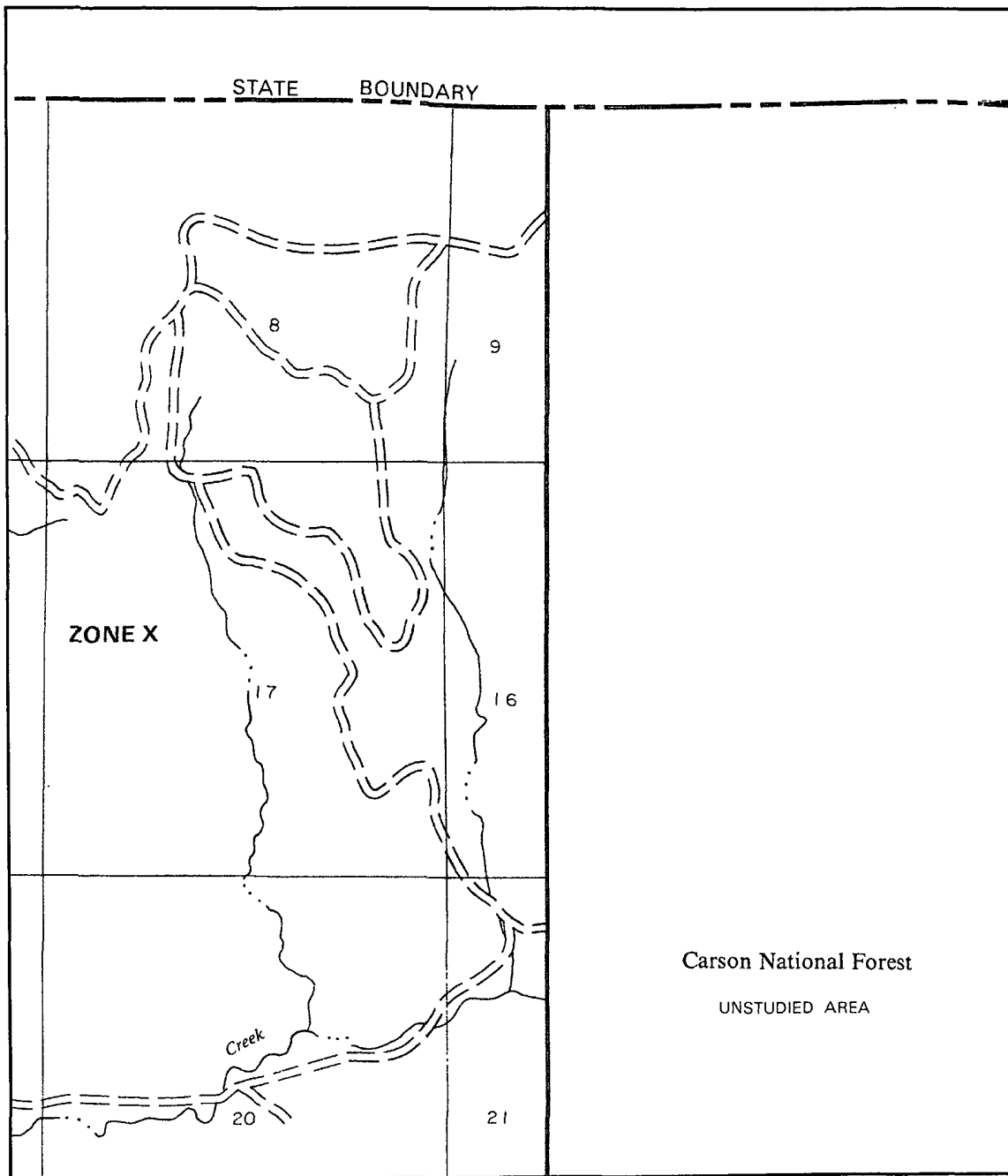
## Live Search Maps

Carracas 21 B #1 •  
N36.97483  
W107.26512  
Twins Carracas 21 B #5 Location.

 **NEW! Try Live Search 411**  
Dial **1-800-CALL-411** for latest info







APPROXIMATE SCALE

2000 0 2000 FEET

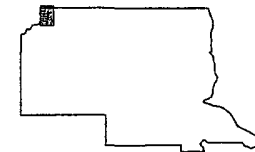
NATIONAL FLOOD INSURANCE PROGRAM

**FIRM**  
FLOOD INSURANCE RATE MAP

RIO ARriba COUNTY,  
NEW MEXICO  
UNINCORPORATED AREAS

PANEL 50 OF 1325

(SEE MAP INDEX FOR PANELS NOT PRINTED)



PANEL LOCATION

COMMUNITY-PANEL NUMBER

350049 0050 B

EFFECTIVE DATE:

JANUARY 5, 1989



Federal Emergency Management Agency

This is an official copy of a portion of the above referenced flood map. It was extracted using F-MIT On-Line. This map does not reflect changes or amendments which may have been made subsequent to the date on the title block. For the latest product information about National Flood Insurance Program flood maps check the FEMA Flood Map Store at [www.msc.fema.gov](http://www.msc.fema.gov)

## **Nathan Smith**

---

**From:** Nathan Smith  
**Sent:** Tuesday, July 01, 2008 2:30 PM  
**To:** 'John Reidinger'  
**Subject:** Carracas 21 B #1 Pit Construction

John-

We will be building a temporary drilling reserve pit for the drilling and completion operation of hte Carracas 21 B #1 as discussed in the onsite.

Thanks

**Nathan Smith**  
**Drilling Engineer**  
office: 505.324.4151  
mobile: 505.793.7604  
email to: [nsmith@energen.com](mailto:nsmith@energen.com))

7/1/2008