

UNITED STATES
DEPARTMENT OF INTERIOR
BUREAU OF LAND MANAGEMENT

FORM APPROVED
Budget Bureau No. 1004-0135
Expires: March 31, 1993

SUNDRY NOTICE AND REPORTS ON WELLS

Do not use this form for proposals to drill or to deepen or reentry to a different reservoir. Use "APPLICATION TO DRILL" for permit for such proposals

AUG 19 2008

5. Lease Designation and Serial No
NMSF-078765

6. If Indian, Allottee or Tribe Name

7. If Unit or CA, Agreement Designation
Rosa Unit

8. Well Name and No.
Rosa Unit #381A

9. API Well No.
30-039-30236

10. Field and Pool, or Exploratory Area
Basin Fruitland Coal

11. County or Parish, State
Rio Arriba, New Mexico

SUBMIT IN TRIPLICATE

1. Type of Well
Oil Well Gas Well X Other

2. Name of Operator
WILLIAMS PRODUCTION COMPANY

3. Address and Telephone No.
PO Box 640 Aztec, NM 87410-0640

4. Location of Well (Footage, Sec., T, R., M, or Survey Description)
Sur 430' FSL & 1120' FWL, Sec 11, / BHL: 660' FSL & 50' FEL, Sec 10, T31N, R6W NMPM

CHECK APPROPRIATE BOX(s) TO INDICATE NATURE OF NOTICE, REPORT, OR OTHER DATA

TYPE OF SUBMISSION

Notice of Intent
X Subsequent Report
Final Abandonment

TYPE OF ACTION

Abandonment
Recompletion
Plugging Back
Casing Repair
Altering Casing
X Other Completion

Change of Plans
New Construction
Non-Routine Fracturing
Water Shut-Off
Conversion to Injection
Dispose Water
(Note: Report results of multiple completion on Well Completion or Recompletion Report and Log form.)

RCVD SEP 3 '08
OIL CONS. DIV.
DIST. 3

07-09-2008

Recap: Load out & move equip from AWS yard, Weatherford yard & Tuboscope yard to Rosa #381A location. MIRU, call out Mote to test rig anchor, tested ok. Raise derrick on rig, secure well & equip, SIFN.

07-10-2008

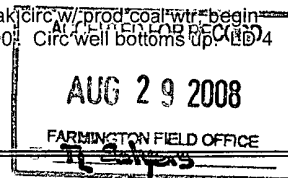
Recap: Finish RU surface equip, WO tbg head & spool from Antelope, NU BOPE, NU HCR & man gate valves, NU blooie lines. RU rig floor & tongs. Secure well & equip, SIWFN.

07-11-2008

Recap: **Test 7" csg & blind rams to 1500 psi w/ rig pump, hold for 30 min w/ no bleed off.** RU chives & tong lines for manual tongs, rig was not rigged up for manual tongs. Tally, PU, MU & RIW as follows; 6-1/4" RR bit, bit sub w/ float, eight 4-3/4" DC's, X-over sub & 94 jts 2-7/8" AOH DP. Set bit @ 3241'. PU RU 3.5 PS & SIFN.

07-12-2008

Recap: Repair broken wire on PS, Weatherford mechanic instructed crew on PS operation. PU 1 jt DP, tag cmt @ 3217', break circ w/ prod coal wtr begin DO cmt. Tag float collar @ 3252'. DO float collar & 7" csg shoe @ 3300'. Begin drlg formation @ 3300' DO open hole to 3400'. Circ well bottoms up. LBD4 jts DP & pull into 7" csg, secure well & equip, SIFN.



14. I hereby certify that the foregoing is true and correct

Signed

Larry Higgins
Larry Higgins

Title Drilling C.O M

Date 8-20-08

(This space for Federal or State office use)

Approved by

Title

Date

Conditions of approval, if any:

Title 18 U.S.C. Section 1001, makes it a crime for any person knowingly and willfully to make to any department or agency of the United States any false, fictitious or fraudulent statements or representations as to any matter within its jurisdiction.

NMOCD

Page 2 – RU #381A

07-13-2008

Recap: PU 4 jts DP tag @ 3400'. Break circ w/ prod coal wtr. Resume drlg formation @ 3400', **DO 6 1/4" drill bit to TD @ 3596'**. Avg ROP 21.7 feet per hr. Circ well bottoms up. LD 9 jts DP & pull into 7" csg, secure well & equip, SIFN.

07-14-2008

Recap: PU & RIW w/ 9 jts DP tag TD @ 3596'. RU Basin WL, RIW w/ Scientific Drlg Gyro, survey well from surface survey depth @ 3580'. **Survey results- 30 degrees @ shoe, 3300', 22 deg @ 3580'**. RD WL, TOH & standback DC's & DP, stiff arm on tongs broke, repair tongs. PU, MU & RIW as follows- Weatherford under reamer, bit sub, eight 4-3/4" DC's, X-over sub, 97 jts 2-7/8" AOH DP. Set under reamer @ 3277'. RD & LD 3.5 PS, problem w/ engine heating up, Weatherford is sending out another one to swap out. Secure well & equip, SIFN.

07-15-2008

Recap: WO PS, PU & RU 3.5 PS, rig bails did not fit right in ears of PS, RD swivel head & WO, build manifold while WO PS. PU & RU swivel head, test all operation, everything good. Secure well & equip, SIFN.

07-16-2008

Recap: Unable to get air pkg started, change fuel filters & prime units, got compressors & booster started, attempted to est circ & mist pump broke down, got mist pump working. RIW to 3310' 10' below shoe @ 3300', attempted to est circ & unload hole, drl string press up to 1200 psi w/ no circ. LD 1 jt DP, hang back PS & pull 15 stds of DP. Est circ & unload wtr from hole @ 900 psi. RIW w/ 15 stds, PU PS & 1jt DP RIW to 3310' 10' below shoe @ 3300', est circ, open under reamer arms, under ream 6-1/4" to 9-1/2" from 3310' to 3404'. Circ bottoms up, LD 4 jts DP & pull under reamer into 7" csg. Secure well & equip, SDFN.

07-17-2008

Recap: Start equip, PU 4 jts DP, break circ w/ 10 bph air-mist, 1 gal foamer per 10 bbl prod wtr w/ 1/4 gal shale treat & 1/4 gal corrosion inhibitor. Open under reamer arms. Begin under reaming 6-1/4" to 9-1/2" @ 3404', under ream to 3453'. (143' from TD @ 3596') Under reamer quit cutting, POOW to inspect under reamer. LD 6 jts, hang back PS. TOH & stand back DP & DC's, under reamer is missing one arm, LD under reamer. PU & MU new under reamer. TIH w/ under reamer, DC's & DP, set under reamer in 7" csg @ 3277', PU & RU 3.5 PS, secure well & equip, SDFN.

07-18-2008

Recap: SICP 475 psi bleed well down @ 2' line. PU 1 jt DP RIW to 3310' 10' below shoe @ 3300', est circ, open under reamer arms. Rotate & circ down to 3453'. Begin under reaming 6-1/4" to 9-1/2" @ 3453'. Under ream from 3453' to 3551', 45' from TD @ 3596', under reamer began torqueing up & stalling out PS & quit making hole. Acts like we might be riding on under reamer arm that was lost in hole. LD 10 jts of DP, no abnormal drag pulling up. Hang back PS, TOH & stand back DP & DC's to inspect under reamer, arms look good w/ some wear on the cut right on the end of the under reamer. Will go back in w/ 6-1/4" junk mill. Secure well & equip, SDFN.

07-19-2008

Recap: SICP 475 psi bleed well down @ 2' line. PU, MU & RIW as follows- 6-1/4" junk mill, bit sub, eight 4-3/4" DC's, X-over sub, & 94 jts 2-7/8" AOH DP. PU DP sgls, tagged @ 3551'. PU & RU 3.5 PS, est circ, circ & rotate to bottom, some moderate torque getting to bottom, mill & CO to TD @ 3596'. LD 10 jts DP, hang off PS. TOH & stand back DP & DC's, LD junk mill, slight wear on outside edge of mill. PU under reamer & TIH w/ DC's & DP to jt 95, set UR @ 3277' 23' above shoe @ 3300'. PU, RU 3.5 PS. Secure well & equip, SDFN.

07-20-2008

Recap: SICP 500 psi bleed well down @ 2' line. PU 1 jt DP RIW to 3310' 10' below shoe @ 3300', est circ, open under reamer arms. Rotate & circ down to 3551', 45' from TD @ 3596'. Begin under reaming 6-1/4" to 9-1/2" @ 3551'. Under ream to 3573' 23' off TD. Hydraulic motor on swivel head locked up. LD PS, LD 11 jts DP, pull into 7" csg. Mechanic changed out hyd motors but this didn't fix problem, found the problem to be a stripped drive shaft, he didn't have this part with him but does have it in stock. Mechanic will be back tomorrow AM to repair PS. Secure well & equip, SDFN.

07-21-2008

Recap: SICP 700 psi, bleed down well @ 2" line. Change out shaft on swivel. Under ream 23' left on well, CO to 3590'. TOH w/ DP, DC's & under ream tool. TIH w/ bit, collars & DP @ 3304'. Pitot test TLTR, 2" line blowing but unable to read on oz gauge, SI nat 1 hr. Check press every 15 min psi from 55 to 60 psi. Build surge #1 40 min to build 1000 psi, open surge & follow w/ air & mist, no coal, clean fluid, no shale. Nat flow 1 hr, build surge #2 40 min to build 1000 psi, open surge & follow w/ air & mist, no coal, clean fluid, no shale. Nat flow 1 hr build surge #3 40 min to build 1000 psi, open surge & follow w/ air & mist, no coal, clean fluid, no shale, nat flow 1 hr.

07-22-2008

Recap: Build surge #4, 40 min to build 100 psi, open surge & follow w/ air & mist, no coal or shale, clean fluid, NF for 2 hrs, 4 hr nat surge. Build surge #5 press up to 345 psi, release surge recover only dry gas. MU manifold for pumping & CO. TIH w/ 9 jts DP tagged 19' above TD, CO well w/ air & mist @ 12 bbls hr, 1 gal per 20 bbls foamer, 1/2 gal per 20 bbls corr inhib & shale treatment. Small bridge, DP went to bottom quick. Run 5 bbl sweeps, clean sweep. TOH w/ 8 jts DP. Surge well to 1200 psi w/ 12 bbls hr mist. Build surge #6, 1 hr 30 min to build 1200 psi, release surge, no coal or shale, dark blk fluid, NF for 30 min. Build surge #7, 45 min to build to 1200 psi, release surge, clean fluid, no coal or shale, NF 1 hr. Build surge #8, 45 min to build to 1200 psi, release surge, clean fluid, no coal or shale, NF 1 hr. Build surge #9, 45 min to build to 1200 psi, release surge, clean fluid, no coal or shale, NF 1 hr. Build surge #10, 45 min to build to 1200 psi, release surge, clean fluid, no coal or shale, NF 1 hr. Build Surge #11, 45 min to build to 1200 psi, release surge, clean fluid, no coal or shale, NF 1 hr.

07-23-2008

Recap: Build srg #12, 45 min to build to 1200 psi, release srg & follow w/ air & mist, light clean wtr, no coal or shale, NF for 2 hrs. Srg #13, 4 hr nat build, press up to 400 psi. SICP 400 psi, release srg, recover only dry gas. TIH w/ DP tag bridge @ 3412', 3446', 3490', CO w air/mist @ 12 bbls hr/ foamer @ 1gal / 20 bbls, corrosion inhibitor @ 1/2 gal / 20 bbls shale treat @ 1/2 gal / 20 bbls. Returns are pepper size coal fines, dark blk wtr no shale. Run 5 bbl sweeps clean up well. Returns were dark blk wtr & then clean foam. TOH w/ 8 jts DP, leave tbg in well @ 3330'. Build srg #14, 1 hr to build to 1200 psi w/ 5 bbl pad, release srg & follow w/ air & mist 20 min, light foam wtr, no coal or shale, NF for 1 hr. Build srg #16, 30 min to build to 1200 psi w/ 5 bbl pad. Work being done on Omni Air Equip. Srg soaking, release srg & follow w/ air & mist for 20 min, returns gray wtr, pepper size coal, no shale, NF for 30 min. Build srg #17, 40 min to build to 1200 psi w/ 5 bbl pad, release srg & follow w/ air & mist for 20 min, returns, gray wtr, pepper size coal, no shale, NF 1 hr. Build srg #18, 40 min to build to 1200 psi w/ 5 bbl pad, release srg & follow w/ air & mist for 20 min, returns, gray wtr, pepper size coal, no shale, NF 1 hr. Build srg #19, 40 min to build to 1200 psi w/ 5 bbl pad, release srg & follow w/ air & mist for 20 min, returns, gray wtr, pepper size coal, no shale.

07-24-2008

Recap: NF for 1 hr. Build srg #20, 45 min to build to 1200 psi, release srg follow w/ air & mist for 20 min, returns are dark blk wtr, fine coal, no shale, 4 hr nat build up to 420 psi, release srg returns were dry gas, pepper size coal, no shale. TIH w/ 7 jts DP tagged @ 3500' small bridge. Circ tbq & air package & begin CO w/ air & mist @ 12 bbls hr/ foamer @ 1gal/ 20 bbls/ corrosion inhibitor 1/2 gal/ 20 bbls/ shale treat @ 1/2 gal/ 20 bbls, returns during CO were 1 cup of pepper size & 1/8 size coal fines every 2 min. Dry up well, prepare well for pitot test. TOH w/ 7 jts DP, leave DP under shoe @3330', pitot test well, tested to 1 oz. Build srg @ 22, 5 bbl pad 1 hr to build to 1200 psi. Soak 1 hr, press dropped to 1150 psi, release srg follow w/ air & mist for 10 min, returns fine coal dust, pepper size coal fines in wtr, dark blk wtr, no shale. Build srg #23, 5 bbl pad 35 min to build to 1200 psi, release srg follow w/ air & mist for 10 min, returns are blk dust, dark gray wtr, fine pepper size coal, NF 1 hr. Build srg #24, 5 bbl pad 35 min to build to 1200 psi, release srg follow w/ air & mist for 10 min, returns are blk dust, dark gray wtr, fine pepper size coal, NF 1 hr. Build srg #25, 5 bbl pad 35 min to build to 1200 psi, release srg follow w/ air & mist for 10 min, returns are blk dust, dark gray wtr, fine pepper size coal, NF 1 hr.

07-25-2008

Recap: Build srg #26, 30 min to build to 1200 psi, release srg follow w/ air & mist 10 min, returns dark dust, dark gray wtr, pepper size coal fines, hvy foam, NF 1hr. Build srg #27, 30 min to build to 1200 psi, release srg follow w/ air & mist 10 min, returns dark dust, dark gray wtr, pepper size coal fines, hvy foam., NF 1hr, 4 hr nat build to 450 psi, release build, returns dry gas, blk dust, LT coal fines, NF 1 hr. Build srg #29, 30 min to build to 1200 psi, release srg follow w/ air & mist 10 min, returns dark dust, dark gray wtr, pepper size coal fines, hvy foam, NF 1hr. Build srg #30, 30 min to build to 1200 psi, release srg follow w/ air & mist 10 min, returns dark dust, dark gray wtr, pepper size coal fines, hvy foam, NF 1hr. Build srg #31, 30 min to build to 1200 psi, release srg follow w/ air & mist 10 min, returns dark dust, dark gray wtr, pepper size coal fines, hvy foam, NF 1hr. Build srg #32, 30 min to build to 1200 psi, soak 30 min, release srg follow w/ air & mist 10 min, returns dark dust, It gray wtr, pepper size coal fines, hvy foam, NF 1hr. Build srg #33, 30 min to build to 1200 psi, soak 30 min, release srg follow w/ air & mist 10 min, returns dark dust, It gray wtr, pepper size coal fines, hvy foam, NF 1hr. Build srg #34, nat SI 1 hr, built to 175 psi, air hand went to AWS 520. Build srg #35, 30 min to build to 1200 psi, soak 30 min, release srg follow w/ air & mist 10 min, returns dark dust, It gray wtr, pepper size coal fines, hvy foam, NF 1hr. Build srg #36, 30 min to build to 1200 psi, soak 30 min, release srg follow w/ air & mist 10 min, returns dark dust, It gray wtr, pepper size coal fines, hvy foam, NF 1 hr.

07-26-2008

Recap: Build srg #37, 30 min to build to 1200 psi, soak 30 min, release srg follow w/ air & mist 10 min, returns dark dust, It gray wtr, pepper size coal fines, hvy foam. NF 1hr. Build Srg #38, 30 min to build to 1200 PSI. Soak 30 min. Release Srg follow w/ air & mist 10 min. Returns dark dust, It gray wtr, pepper size coal fines, hvy foam. NF 1hr. 4 hr nat build to 520 psi. Release build, returns dry gas, black dust, LT coal fines. NF 1 hr. Build srg #39, 30 min to build to 1200 psi. Soak 30 min. Release srg follow w/ air & mist 10 min. Returns dark dust, It gray wtr, pepper size coal fines, hvy foam. NF 1hr. Build srg #40, 30 min to build to 1200 psi. Soak 30 min. Release srg follow w/ air & mist 10 min. Returns dark dust, It gray wtr, pepper size coal fines, hvy foam. NF 1hr. Build srg #41, 30 min to build to 1200 psi. Soak 30 min. Release srg follow w/ air & mist 10 min. Returns dark dust, It gray wtr, No coal, hvy foam. NF 1hr. Build Srg #42, 30 min to build to 1200 psi. Soak 1hr 30 min, build back loss 20 psi. Release srg follow w/ air & mist 10 min. Returns fines coal, dark gray wtr. NF 1hr. Build srg #43, 30 min to build to 1200 psi. Soak 1hr 30 min. Release srg follow w/ air & mist 10 min. Returns fine coal, DK gray wtr. NF 1hr. Build srg #44, 30 min to build to 1200 psi. Soak 1hr 30 min. Release srg follow w/ air & mist 10 min. Returns fine coal, dark gray wtr. NF 1hr.

07-27-2008

Recap: Build srg #38, 30 min to build to 1200 psi, soak for 1hr 30min. Pressure held. Release Srg. Returns med amounts of pepper size coal, light amounts of black fluid. 4 hr nat build to 460 psi. Release build, returns It amounts of dark black wtr, med & pepper size coal. TIH w/ DP & CO to TD. Returns hvy amounts of dark black wtr, pea & pepper size coal. Build Srg #38, 30 min to build to 1200 PSI. Soak for 1hr 30min. Pressure held. Release Srg. Returns med amounts of pepper size coal, light amounts of black fluid. 4 Hr Nat build to 460 PSI. Crew travel from Aztec yard to Rosa Unit 381A. Release Build. Returns Light amounts of dark black wtr, med and pepper size coal. Service Rig. JHA w/ crew and air hand. TIH w/ DP and CO to TD. Returns hvy amounts of dark black wtr, Pea and Pepper size coal. Run Sweep on each JT hole a little tight. Dry up well with air while on bottom. TOOH w/ 8 Jts DP. Pitot test. Tested only 1 oz, or 156 MCF. 4 hr Nat Build to 520 PSI. Release build. Returns light amounts of dark black dust, and Dry gas. 1 hr NF.Run sweep on each jt hole a little tight. Dry up well w/ air while on bottom. TOOH w/ 8 Jts DP. Pitot test. Tested only 1 oz, or 156 MCF. 4 hr Nat Build to 520 psi. Release build, returns light amounts of dark black dust, & dry gas, 1 hr NF.

07-28-2008

Recap: 3 hr nat build, build up to 260 psi, release press, returns blk dust, pepper size coal fines, dry gas, NF 1 hr. 4 hr nat build, built up to 260 psi, release press, return blk dust, pepper size coal fines, dry gas, NF 1hr, build srg #43, 30 min to build up to 1200 psi, w/ 5 bbl pad, release srg, returns hvy amounts of blk wtr, hvy pea & pepper size coal fines, NF 1 hr. Build srg #44, 30 min to build up to 1200 psi, w/ 5 bbl pad, release srg, returns hvy amounts of blk wtr, hvy pea & pepper size coal fines, NF 1 hr. TIH w/ DP tagged fill @ 4490', CO w/ air & mist @ 10 bbls hr/ foamer @ 1 gal/20 bbls/corrosion inhibitor @ ½ gal/20bbls/ shale treat @ ½ gal/20bbls. CO w/ air & mist, returns dark blk wtr, hvy coal fines pea & pepper size coal, 5 bbl sweep to CO WB, CO to 3526', TOH w/ 6 jts DP. Build srg #45, 45 min to build up to 1200 psi w/ 5 bbl pad, release srg, returns blk dust no wtr, chase blk wtr & hvy coal fines, hvy gas 12' flare, NF 1 hr. Build srg #45, 45 min to build up to 1200 psi, release srg, returns blk dust no wtr, chase blk wtr & hvy coal fines, hvy gas 12' flare, NF 1 hr. Build srg #45, 45 min to build up to 1200 psi w/ 5 bbl pad, release srg, returns blk dust no wtr, chase blk wtr & hvy coal fines, hvy gas 12' flare, NF 1 hr.

07-29-2008

Recap: Build srg #47, 45 min to build up to 1200 psi air & mist @10 bbls hr, release srg, returns blk dust hvy mist, chase blk wtr & hvy coal fines, hvy gas, 14' flare, NF 1hr. Build srg #48, 45 min to build up to 1200 psi air & mist @10 bbls hr, release srg, returns blk dust hvy mist, chase blk wtr & hvy coal fines, hvy gas, 14' flare, NF 1 hr, 4 hr nat build, built up to 520 psi, release press, returns blk dust fine coals, dry gas, NF 1 hr, 2 hr nat build, built up to 150 psi, release press, no wtr, blk dust, fine coal, dry gas, NF 1 hr, 16' flare. Mist pump down bring out new one. Build srg #51, 45 min to build up to 1200 psi w/ 10 bbls per hr mist, release srg, returns blk dust, light mist, no wtr, trace of coal, hvy gas, NF 1 hr. Build srg #52, 30 min to build up to 1200 psi, air only no mist, release srg, returns blk dust, light mist, no wtr, trace of coal, hvy gas, NF 1 hr. Build srg #53, 30 min to build up to 1200 psi. air only no mist, release srg, returns blk dust, light mist, no wtr, trace of coal, hvy gas, NF 1 hr. New mist pump here begin to srg well w/ air & mist. Build srg #54, 45 min to build up to 1200 psi, 5 bbl pad, 10 bbls hr, release srg, returns blk dust, light mist, no wtr, trace of coal, hvy gas, NF 1 hr. Build srg #55, 30 min to build up to 1200 psi, air & mist 10 bbls hr, release srg, returns blk dust, light mist, no wtr, trace of coal, hvy gas, NF 1 hr. Build srg #56, 30 min to build up to 1200 psi, air & mist 10 bbls hr, release srg, returns blk dust, light mist, no wtr, trace of coal, hvy gas, NF 1 hr. Build srg #57, 30 min to build up to 1200 psi, air & mist 10 bbls hr, release srg, returns blk dust, light mist, no wtr, trace of coal, hvy gas, NF 1 hr.

07-30-2008

Recap: Build srg #58, 30 min to build to 1200 psi, air & mist @ 10 bbls/hr, foamer @ 1gal 20 bbls corrosion inhibitor @ ½ gal 20 bbls, shale treat @ 1/2 gal 20 bbls, release srg, returns light pepper size coal, light gray color wtr, hvy gas w/ 20 ft flare, NF 2 hrs, 4 hr nat build, built to 550 psi release press, returns blk dust, fine coal, dry gas, NF 2 hrs, 20' flare. TIH w/ 6 jts DP, CO w/ air & mist @ 10 bbls/hr, foamer @ 1gal 20 bbls, corrosion inhibitor @ ½ gal 20 bbls, shale treat @ 1/2 gal 20 bbls, returns hvy pepper size coal, blk wtr, med gas. RD 3.5 PS, motor went down, RU 2.5 PS & begin CO, ran a 5 bbl sweep & DP string got stuck, swivel stopped rotating. Pumped pressure on back side, let air & mist soak for 1 hr & work DP till sting came loose. CO csg & DP to TOH w/ rest of tbg. TOH w/ 6 jts DP, LD on cat walk, 4 hr nat build, built up to 550 psi, release press, returns blk dust fine coal, dry gas, NF 1 hr, 30' flare.

07-31-2008

Recap: 4 hr nat build srg, SICP 680 psi, srg well to pit down blooie line, med blk dust no wtr. RD 2.5 PS, to small for the job. RU 3.5 PS. Flow Test: Duration = 1 hr, Test Method = Pitot, MCF/ROMD = 247 mcf/d, Casing PSI = 2.5 oz, Tbg PSI = 0 PSI, Gas Type = Dry gas, Disposition - Non Flaring, Choke Size = 2" open line. PU DP sgls, tagged bridge @ 3345', break circ w/ 15 bph air-mist, 1 gal foamer, 1/2 gal corrosion inhibitor, per 20 bbls produced wtr, clear bridge returns hvy fines to 1/2 inch coal, tagged bridge @ 3330', tagged bridge @ 3432' & 3450' returns hvy coal fines 4 cups per min while wking DP, CO to 6463', 133' off TD @ 3596. LD 4 jts DP & set DP @ 3330', 30' below shoe, cav well w/ 4 hr nats. Turn over to FB & air hands for overnight cavitation. Cavitate form shoe w/ 4 hr nat.

08-01-2008

Recap: Cavitate from shoe w/ nat surges. SICP 480 psi. Surge well to pit, returns light blk dust & no wtr. Change stripping rubber out. PU & RU 3.5 PS, PU DP sgls, chk for fill, tagged bridge @ 3240', break circ w/ 10 bbls air-mist, 1gal foamer, 1/2 gal corrosion inhibitor per 20 bbls prod coal wtr, clear bridge returns hvy fine to 1/8" coal, tagged @ 3465' returns hvy coal fines, CO to 3526', tagged hard fill @ 3496, returns hvy fines, hvy torque on PS, hole is very tight at this pt, work pipe & pump sweeps as needed. CO to 3558, 32' off TD @ 3590'. Swivel began to kill & would not rotate, called for repair man. Circ well w/ air & mist, work DP as needed to keep from getting stuck. PU DP sgl CO fill @ 3590' to TD. TOH w/ 3 jts DP & turn off mist, dry up well. TOH w/ 5 jts DP & run Pitot test. FLOW TEST: Duration = 1hr, Test Method = Pitot, MCF/ROMD = 434 MCF/ROMD, Csg PSI = 8oz, TBG PSI = 0 psi due to sting float, Gas Type = Dry, Gas Disposition = Non flaring, Choke Size = 2" open line. Turn well over to FB & air hand for nat surges.

08-02-2008

Recap: Cavitate from shoe w/ nat. SICP 600 psi, srg well to burn pit down blooie line. Light blk dust, dry gas. RD swivel, RU power tongs. TOH w/ 48 stds DP & 1 sgl. Chk for fill in csg. Csg clean, TIH w/ 48 stds DP & 1 sgl jt DP. PU from cat walk 5 jts DP tagged bridge @ 3485', 101' above TD @ 3596. Break circ w/ 8 bbls air-mist, 1 gal foamer, 1/2 gal corrosion inhibitor, per 20 bbls prod wtr, well ran light coal fines cleaned up quick. CO to TD w/ no problems. Pipe went down hole quick. Returns small amounts of coal fines. Dry up well w/ air no mist for 1 hr. TOH w/ 9 jts DP LD on cat walk. FLOW TEST: Duration = 1 hr, Test Method = Pitot, MCF/ROMD = 464 mcf/romd, Casing PSI = 9oz, Tbg PSI = 0 PSI due to string float, Gas Type = Dry, Gas Disposition = non flaring, Choke Size = 2" open line. Cavitate from shoe w/ nat.

08-03-2008

Recap: Cavitate well w/ 4 hr nat build srgs, release srg to burn pit down blooie line, returns blk dust, hvy dry gas, chase w/ air & mist 10 min, 20' flare.

08-04-2008

Recap: Build 4 hr nat build srg's. Release srg returns brown dust, dry gas 25-30' flare. TIH tag for fill, tagged @ 3485' small bridge, 110' above TD @ 3595'. CO w/ air-mist @ 8 bbls/hr, foamer @ 1 gal, corrosion inhibitor @ ½ gal per 20 bbls prod wtr. CO all the way to TD found no more bridges, returns dark blk wtr w/ light coal about 1/16 in, hvy gas. Tan 4 sweeps as needed. TOH w/ 3 jts DP, dry up well w/ air only. TOH w/ 5 jts DP leaving tbg 25' under shoe. Flow air off well for 30 min. FLOW TEST: Duration = 1hr, Test Method = Pitot, MCF/D = 434 mcf/d, Casing PSI = 9 oz, TBG PSI = 0 due to sting float, Gas Type = Dry, Gas Description = non-flaring, Choke size = 2" open line. Turn well over to FB & air hand, cavitate well w/ psi srg's.

08-05-2008

Recap: Energized srg & nat srg build ups, w/ FB & air hand. Release nat srg, returns coal fines, dry gas, blk wtr w/ chase. TIH w/ 5 jts DP tag for fill, tagged @ 3471', 125' above TD @ 3596', tagged bridge & tight spot @ 3518', 78' above TD @ 3596', hvy coal fines & blk wtr, 4 sweeps brought blk hvy coal fines 1/8 - 1/16" in size 2-3 cups a min, CO all the way to TD @ 3596', returns hvy coal fines blk wtr sweeps as needed. TOH w/ 3 jts DP, dry up well w/ air only. TOH w/ 5 jts DP, flow for 30 min get all air out, pitot test. FLOW TEST: Duration = 1hr, Test Method = Pitot, MCF/D = 520 mcf/d, PSI = 11.5 oz, Tubing PSI = 0 due to sting float. Gas Type = Dry, Gas Description = non-flaring, Choke size = 2" open line. Turn over to FB & air hand for energized srgs, build up to 1000 psi w/ 5 bbl pads

08-06-2008

Recap: Energized Srg's and Nat Srg Build-ups, w/ flowback and air hand. --- JHA w/ crew and air hand. SICP @600 PSI. Release to burn pit and down blooie line. Returns coal fines, dry gas, chase: black water and coal. --- TIH w/ 2 Jts DP tagged bridge @ 3376', 220' above TD @ 3596', CO w/ air-mist 8bbls/hr/foamer 1gal/ corrosion inhibitor 1/2 gal/ 20 bbls produced water. TIH w 1 JT DP bridge @ 3399', 197' above TD @ 3596, Bridge @ 3435', 161' above TD @ 3596, CO to TD @ 3596. --- TOOH w/ 2 Jts DP Dry up well w/ AIR ONLY. --- TOOH w/ 6 Jts DP. Flow well for 45 min. to get air off. Pitot Test. --- FLOW TEST: Duration = 1hr, Test Method = Pitot, MCF/D = 565 mcf/d, Casing PSI = 13 oz, Tubing PSI = 0 due to string float, Gas Type = Dry, Gas Description = non-flaring, Choke Size = 2" open line. ---Turn over to flowback and air hand for Energized Srg's.

08-07-2008

Recap. Energized Srg's and Nat Build Srg's w/ flowback and air hand. --- JHA w/ Crew and Air Hand. SICP 580 PSI. Release Srg to burn pit down blooie line. Returns light coal, dry gas. Chase w/ air-mist Dark black wtr, small amount coal fines. --- TIH w/ 6 Jts DP, Tagged bridge @ 3520', 76' above TD @ 3596. CO to TD no more bridges. Returns black water, dry gas, coal fines. --- TOOH w/ 8 Jts DP. --- Energized Srg to 1200 PSI w/ 3 pads, one @ the beginning, 2nd @ 400PSI, 3rd @ 700PSI. Release Srg. Returns black water, dry gas, coal fines. --- TIH w/ 2 Jts DP, Tagged bridge @ 3380', 216' above TD @ 3596, Bridge @ 3420', 176' above TD, Bridge @ 3448', 142 above TD, Bridge @ 3482', 114' above TD @ 3596, CO to TD @ 3596 no more bridges. --- Dry up well w/ AIR ONLY. --- Flow well out 2" get air off well. --- FLOW TEST: Duration = 1hr, Test Method = Pitot, MCF/D = 582 mcf/d, Casing PSI = 14 oz, Tubing PSI = 0 due to string float, Gas Type = Dry, Gas Description = non-flaring, Choke Size = 2" open line. --- Turn well over to Flowback and Air Hand for Energized Srg's.

08-08-2008

Recap: Energized Srg's and Nat Build Srg's w/ flowback and air hand. --- JHA w/ Crew and Air Hand. SICP 680 PSI. Release Srg to burn pit down blooie line. Returns Hvy coal, dry gas. Chase w/ air-mist Dark black wtr, Large amount coal fines. --- TIH w/ 6 Jts DP, Tagged bridge @ 3520', 76' above TD @ 3596. CO to TD no more bridges. Returns black water, dry gas, coal fines. --- Dry up well w/ AIR ONLY. --- Flow well out 2" get air off well. --- FLOW TEST: Duration = 1hr, Test Method = Pitot, MCF/D = 623 mcf/d, Casing PSI = 17 oz, Tubing PSI = 0 due to string float, Gas Type = Dry, Gas Description = non-flaring, Choke Size = 2" open line. --- Turn well over to Flowback and Air Hand for Energized Srg's.

08-09-2008

Recap: Energized Srg's and Nat Build Srg's w/ flowback and air hand. --- JHA w/ Crew and Air Hand. SICP 690. Release Srg to burn pit down blooie line. Returns light coal, Dry gas. Chase w/ air-mist Dark black water, small amounts coal fines. --- TIH w/ 2 Jts DP, Tagged bridge @ 3371', 225' above TD @ 3596. Returns light water, small amounts of coal fines, Dry gas. Bridge @ 3399', 197' above TD, Bridge @ 3470', 126' above TD, CO to TD @ 3596. Returns hvy 1in size coal to fine size coal, black water with coal fines, hvy gas. --- TOOH w/ 2 Jts DP, Dry up well w/ AIR ONLY. --- TOOH w/ 6 Jts DP. Leave DP @ shoe. Flow well for 45 min get air off well. Run Pitot. --- FLOW TEST: Duration = 1hr, Test Method = Pitot, MCF/D = 577 mcf/d, Casing PSI = 13.5 oz, Tubing PSI = 0 due to sting float, Gas Type = Dry, Gas Description = non-flaring, Choke Size = 2" open line. --- Turn well over to Flowback and Air Hand for Nat. Srg's.

08-10-2008

Recap: Nat. Build Srg's w/ flowback and air hand. Returns no coal, no water, hvy gas.

08-11-2008

Recap: Nat. build Srg's w/ flowback and air hand. --- JHA w/ crew and air hand. SICP 460 PSI. Release Srg to burn pit down blooie line. No coal, dry gas. Chase w/ air-mist, brown water, small amounts coal fines. --- TIH CO and Run Sweeps as needed. CO to TD @ 3596. Wellbore was clean found no fill. --- TOOH w/ 2 Jts DP Dry up well w/ Air Only. TOOH w/ 6 Jts DP. FLOW TEST: Duration = 1 Hr, Test Method = Pitot, MCF/D = 600 mcf/d, Casing PDI = 15 oz, Tubing PSI = 0 due to sting float, Gas Type = Dry, Gs Description = non-flaring, Choke Size = 2" open hole. Turn well over to Flowback and Air Hand for Flowing, flaring, and mist well.

08-12-2008

Recap: Nat. build Srg's w/ flowback and air hand. --- JHA w/ crew and air hand. --- TIH CO and Run Sweeps as needed. CO to TD @ 3596. Wellbore was clean found no fill. --- TOOH w/ 2 Jts DP Dry up well w/ Air Only. TOOH w/ 6 Jts DP. **FLOW TEST: Duration = 1 Hr, Test Method = Pitot, MCF/D = 623 mcf/d, Casing PDI = 17 oz, Tubing PSI = 0 due to sting float, Gas Type = Dry, Gs Description = non-flaring, Choke Size = 2" open hole.** Turn well over to Flowback and Air Hand for Flowing, flaring, and mist well.

08-13-2008

Recap: Flow well to burn pit down blooie line w/ FB & air hand. TIH CO & run sweeps as needed, CO to TD @ 3596. WB was clean found no fill. LD 17 jts of DP, hang off 3.5 PS. TOH & std back DP & DC's. RU SJ Casing PU, MU & RIW as follows - LA set shoe. **9 jts 5-1/2" 17# N-80 EUE csg (414.15')**, H-latch, TOW setting tool. RD SJ Csg, RIW w/ liner assy & 90 jts AOH DP. PU DP sgls run in slow, tag @ 3423' circ rotate to 3591'. **Release liner @ 3591' PBTD @ 3590', 7" shoe @ 3300', liner top @ 3175', liner bottom @ 3591', 125' overlap.** RD & LD 3.5 PS, TOH & LD DP. Secure well & equip, SDFN.

08-14-2008

Recap: SICP 590 PSI, Bleed off down 2" line to Pit.--- JHA w/ crew, air hand, and Basin wireline. Move swivel skid and set Tbg float. RU wireline. --- **TIH w/ wireline guns and perforate 5-1/2" liner w/ 11 grams charge, 53 holes, 4 spf, as follows bottom to top, 3470' to 3495', 25', 90 shots, 3435' to 3445', 10', 40 shots, 3405' to 3425', 20', 80 shots, 3350' to 3360', 10', 40 shots, total feet 65', and 260 shots.** --- RD wireline. --- Tally, PU, Rabbit, MU & TIH as follows - 2-7/8 mule shoe, 110 Jts 2-7/8" 6.5# J-55, EUE 8rd Tbg. --- Tie air onto Tbg string, circulate well untill returns are clean. --- LD 2 Jts Tbg and Stand back 8 stands. --- Secure well & Equipment. SDFN.

08-15-2008

Recap: SICP 650 PSI, Bleed off down 2" line to Pit.--- JHA w/ crew, air hand and SB Banding. --- TOOH w/ 2-7/8" Tbg Switch out mule Shoe for BHA. --- **TIH w/ Plug Jt, Screen, F-Nipple, 2-7/8 6.5#, J-55, EUE 8RD Production Tbg as Follows: 1 - 2-7/8", 6.5#, J-55, EUE 8RD Plug Jt, Screen, 1 - 2-7/8" x 2.28" x 2-7/8" "F" Nipple, 106 - 2-7/8" 6.5#, J-55, EUE 8RD Production Tbg, 1 - 2-7/8" x 10" x 2-7/8" Pup Jt, 1 - 2-7/8" 6.5#, J-55, EUE 8RD Production Tb.** --- Test Tbg to 1000 PSI. Test Good. TIH w/ Sand line fish standing valve. --- TOOH w/ 3 Stands and 10' pup Jt. Run 207' Chem Cap. String. --- RD Floor and NU BOP's, MU SR head. RU Rod equipment. **TIH w/ Pump, Sinker Bars and Rods as follows: 1-1/4" Insert Pump w/ 1"x6' Gas Anchor, 6 - 3/4" x 1/2" Sinker Bars, 59 - 3/4" Type 54, API Grade "D" Rods, 76 - 3/4" Type 54 Grade "D" Rods w/ Snap on Guides 3 per Rod, 1 - 6' x 3/4" Type 54, Grade "D" Pony, 1 - 1-1/4" x 16' Polished Rod w/ 1-1/2" x 8' Liner.** Secure well. SDFW.

8-16-2008

Recap: SICP 760. --- JHA w/ crew, air hand. --- Test Tbg to 500 PSI Test Good. Test Pump to 500 PSI (Stoke Test) Test Good. --- Release guide lines, lower Derrick prepare to move rig. --- **MOVE RIG FROM ROSA UNIT 381A TO ROSA UNIT 258A.** --- FINAL REPORT. TURN OVER TO CBM TEAM.

**ROSA UNIT #381A
BASIN FRUITLAND COAL**

Surface Location:

430' FSL and 1120' FWL
SW/4 SW/4 Sec 11 (M), T31N, R6W
Rio Arriba, NM

Bottom Hole Location:

660' FSL and 50' FEL
SE/4 SE/4 Sec 10 (P), T31N, R6W
Rio Arriba, NM

Elevation: 6388' GR
API # 30-039-30236

Spud: 06/21/08

Pump Install: 8/15/08

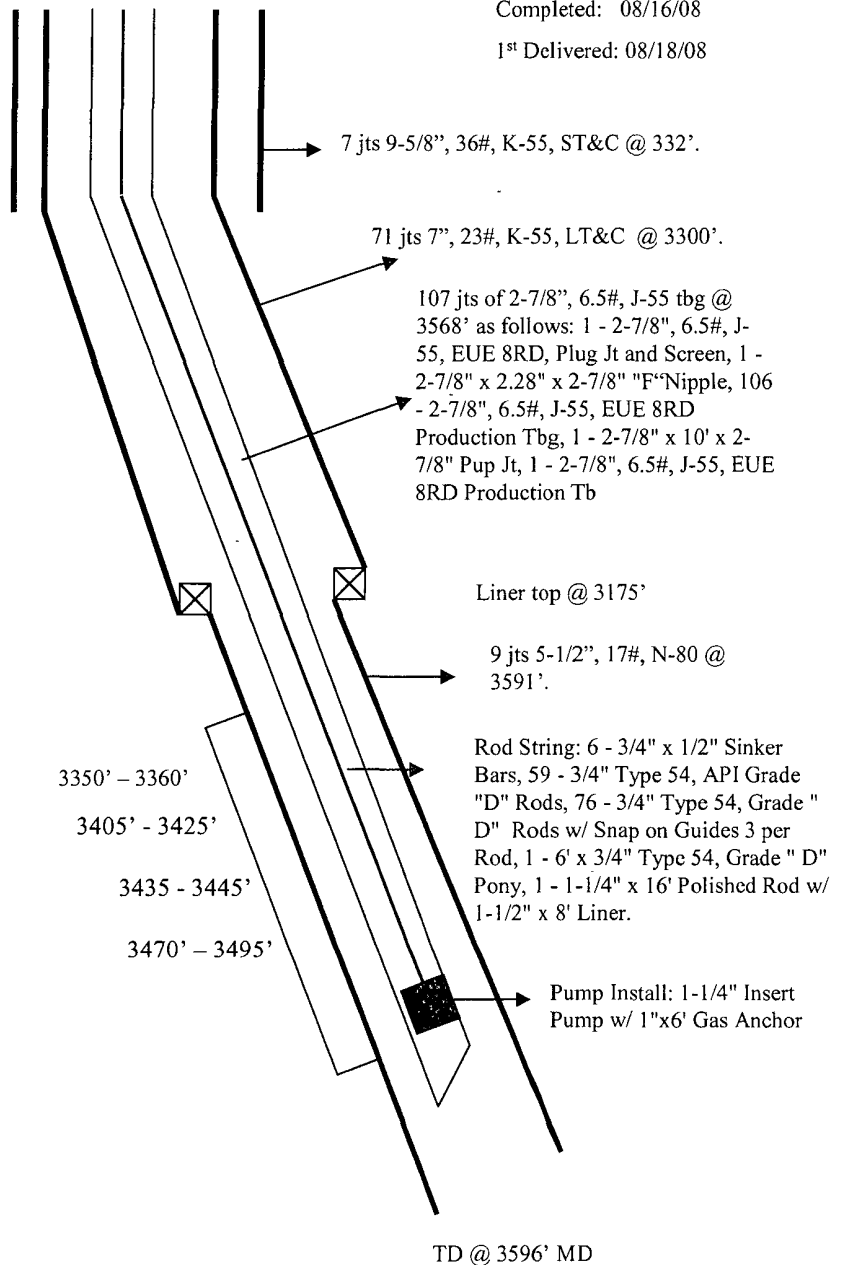
Completed: 08/16/08

1st Delivered: 08/18/08

Top	MD Depth
Ojo Alamo	2611'
Kirtland	2732'
Fruitland	3188'

0.53", 4SPF

260 holes total



Hole Size	Casing	Cement	Volume	Top of Cmt
12-1/4"	9-5/8", 36#	160 sxs	226 cu.ft.	Surface
8-3/4"	7", 23#	522 sxs	1072 cu.ft.	Surface
6-1/4"	5-1/2", 17#	Did Not Cmt		