

District I

1625 N. French Dr., Hobbs, NM 88240

District II

1301 W. Grand Ave., Artesia, NM 88210

District III

1000 Rio Brazos Rd., Aztec, NM 87410

District IV

1220 S. St. Francis Dr., Santa Fe, NM 87505

Energy, Minerals and Natural Resources

OIL CONSERVATION DIVISION

1220 South St. Francis Dr.

Santa Fe, NM 87505

June 19, 2008

| | | |
|--|--|---|
| SUNDRY NOTICES AND REPORTS ON WELLS (DO NOT USE THIS FORM FOR PROPOSALS TO DRILL OR TO DEEPEN OR PLUG BACK TO A DIFFERENT RESERVOIR USE "APPLICATION FOR PERMIT" (FORM C-101) FOR SUCH PROPOSALS.) | | WELL API NO. 30-045-31830 |
| 1. Type of Well: Oil Well <input type="checkbox"/> Gas Well <input checked="" type="checkbox"/> Other | | 5. Indicate Type of Lease STATE <input checked="" type="checkbox"/> FEE <input type="checkbox"/> |
| 2. Name of Operator BURLINGTON RESOURCES OIL & GAS COMPANY LP | | 6. State Oil & Gas Lease No. B-10889-30 |
| 3. Address of Operator PO Box 4298, Farmington, NM 87499 | | 7. Lease Name or Unit Agreement Name Turner B Com A |
| 4. Well Location Unit Letter A : 935 feet from the North line and 890 feet from the East line Section 2 Township 30N Range 09W NMPM County San Juan | | 8. Well Number 200S |
| 11. Elevation (Show whether DR, RKB, RT, GR, etc.) 5904' GL | | 9. OGRID Number |
| | | 10. Pool name or Wildcat Basin Fruitland Coal |

12. Check Appropriate Box to Indicate Nature of Notice, Report or Other Data

NOTICE OF INTENTION TO:

PERFORM REMEDIAL WORK
TEMPORARILY ABANDON
PULL OR ALTER CASING
DOWNHOLE COMMINGLE

☐
☐
☐
☐

PLUG AND ABANDON
CHANGE PLANS
MULTIPLE COMPL

☒
☐
☐

OTHER:

☐

SUBSEQUENT REPORT OF:

REMEDIAL WORK
COMMENCE DRILLING OPNS.
CASING/CEMENT JOB

☐
☐
☐

ALTERING CASING
P AND A

☐
☐

OTHER:

☐

13. Describe proposed or completed operations. (Clearly state all pertinent details, and give pertinent dates, including estimated date of starting any proposed work). SEE RULE 1103. For Multiple Completions: Attach wellbore diagram of proposed completion or recompletion.

[Signature]

RCVD SEP 18 '08

OIL CONS. DIV.

DIST. 3

Burlington Resources wishes to plug and abandon this well according to the attached procedures. Well bore schematics attached.

SPUD DATE:

3/17/2005

RIG RELEASE DATE:

I hereby certify that the information above is true and complete to the best of my knowledge and belief.

SIGNATURE

Tamra Sessions

TITLE

Staff Regulatory Technician

DATE

9/16/2008

Type or print name

Tamra Sessions

E-mail address:

sessitd@conocophillips.com

PHONE:

505-326-9834

For State Use Only

APPROVED BY

Felix G. Roa

TITLE

Deputy Oil & Gas Inspector,
District #3

DATE

SEP 24 2008

Conditions of Approval (if any):

to

ConocoPhillips
Turner B Com 200S (FRC)
P&A

Lat 36° 50' 40.92" N Long -107° 44' 37.03" W

Prepared By: Dryonis Pertuso
Production Engineering Peer review/approved By:

Date: 08/12/2008
Date: / /

Scope of work: Plug and abandon the Turner B Com 200S.

Est. Rig Days: 5

WELL DATA:

API: 30-045-318300
Location: 935' FNL & 890' FEL, Unit A, Section 02– T 30 N – R 09 W
PBTD: 2794' **TD:** 2796'
Perforations: 2514'-2706' (FRC) pre-perforated liner

| Casing: | OD | Wt., Grade | Connection | ID/Drift (in) | Depth |
|--------------------|-----------|-------------------|-------------------|----------------------|--------------|
| | 9-5/8" | 32.3#, H-40 | ST&C | 9.001/8.845 | 145' |
| | 7" | 20#, J-55 | ST&C | 6.456/6.331 | 2493' |
| Liner: | 5 1/2" | 15.5#, J-55 | LT&C | 4.950/4.825 | 2796'-2472' |
| Tubing: | 2-3/8" | 4.70#, J-55 | | 1.995/1.901 | 2723' |
| S Nipple: | 2-3/8" | | | 1.78 | 2724' |
| Tubing sub: | 2-3/8" | 4.70#, J-55 | | 1.995/1.901 | 2744' |

Well History/ Justification: This well was completed in April 2005, as a Fruitland coal producer. The well never made more than 120 Mcfd and it declined steeply after its completion. Several attempts were made in order to bring it back online with no success. The well was compressed and kept pumped off (pumping unit producing 15 Bwpd) but still no gas was produced. Further analysis along with the RAM team showed that the parent well (Turner B com A 200) had swept double the gas of the 160 acre spacing for this section, therefore whatever gas left behind by this well will be recovered by its parent. Therefore it is recommended to P&A this wellbore.

B2 Adapters are required on all wells other than pumping wells.

Artificial lift on well (type):

Est. Reservoir Pressure (psig): 70 (FRC)

Well Failure Date: 06/28/2006

Earthen Pit Required: No earthen pit is required but it will **require a steel pit**

Special Requirements: Notify appropriate regulatory body 24 hours before cementing.

| | |
|--------------------------------|---|
| PE Production Engineer: | Dryonis Pertuso, Office: # (505) 599 3409, Cell: (505) 320 6568 |
| PE Backup: | Soledad Moreno, Office: Cell: #(505) 320-8529 |
| MSO: | Greg Valdez Cell # (505) 324-2493 |
| Lead: | Jack Birchfield Cell # (505) 324-7814 |
| Area Supervisor: | Jim Peace Cell # (505) 324-8548 |

ConocoPhillips
Turner B Com 200S (FRC)
P&A

Lat 36° 50' 40.92" N Long -107° 44' 37.03" W

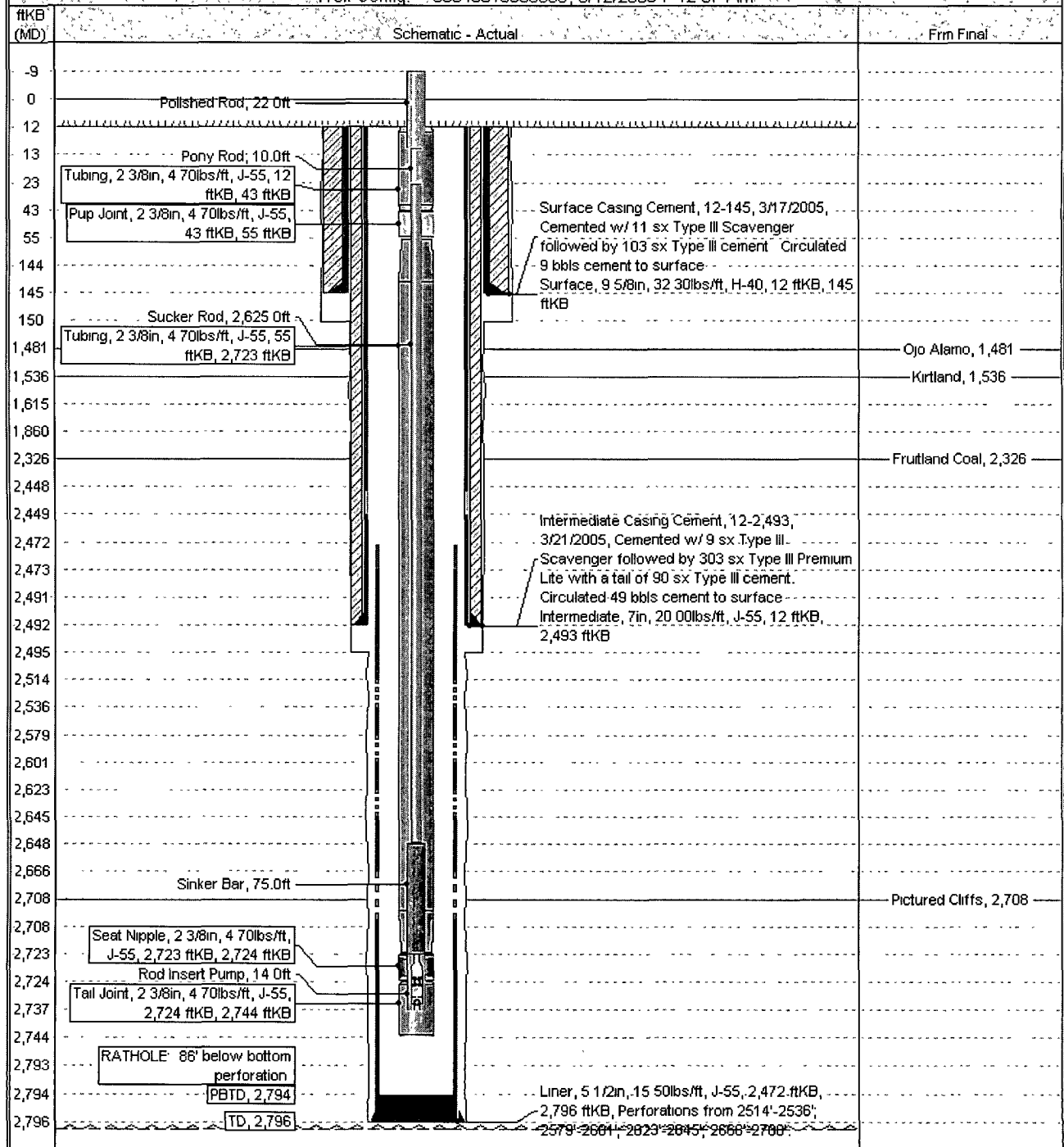
Note: All cement volumes use 100% excess outside pipe and 50' excess inside. The stabilizing wellbore fluid will be 8.3 ppg, sufficient to balance all exposed formation pressures. All cement will be Class G, mixed at 15.8 ppg with a 1.15 cf/sx yield.

1. This project requires the Operator to obtain an approved NMOCD C-144 CLEZ Closed-Loop System Permit for the use of an A-Plus steel tank to handle waste fluids circulated from the well and cement wash up.
2. Install and test location rig anchors. Comply with all NMOCD, BLM, and Operator safety regulations. MOL and RU daylight pulling unit. Conduct safety meeting for all personnel on location. Record casing, tubing and bradenhead pressures. NU relief line and blow down well. Kill well with water as necessary and at least pump tubing capacity of water down the tubing. ND wellhead and NU BOP. Function test BOP.
3. Rods: Yes X , No , Unknown
Tubing: Yes X , No , Unknown , Size 2.375" , Length 2746' .
Packer: Yes , No X , Unknown , Type .
If well has rods or a packer, then modify the work sequence in Step #2 as appropriate.
4. **Plug #1 (Fruitland Coal interval, 7" casing shoe and 5.5" liner top, 2443' – 2276')**: Round trip 7" gauge ring to 2443'. TIH and set 7" CR at 2443'. Pressure test tubing to 1000#. Load casing with water and circulate well clean. Pressure test casing to 1000#. *If the casing does not test, then spot or tag subsequent plugs as appropriate.* Mix 43 sxs Class G cement, and spot above CR from 2443' to 2276' to isolate the Fruitland interval. PUH.
5. **Plug #2 (Kirtland and Ojo Alamo tops, 1576' – 1292')**: Spot 67 sxs Class G cement inside casing and spot a balanced plug to cover the Kirtland and Ojo Alamo tops. PUH to 195'.
6. **Plug #3 (9.625" casing shoe, 195' - Surface)**: Attempt to pressure test the bradenhead annulus to 300#. If the BH annulus holds pressure, then establish circulation out casing valve with water. Mix approximately 45 sxs Class G cement and spot a balanced plug from 195' to surface, circulate good cement out casing valve. TOH and LD tubing. Shut well in and WOC. If the BH annulus does not test, then perforate at the appropriate depth and attempt to circulate cement to surface filling the casing and the annulus.
7. ND BOP and cut off wellhead below surface casing flange. Install P&A marker with cement to comply with regulations. RD, MOL and cut off anchors. Restore location per BLM stipulations.

Schematic - Current
TURNER B COM A #200S

| | | | | | |
|---------------------------------|--|-----------------------------------|--------------------------|-------------------------------------|----------------------------|
| District NORTH | Field Name BASIN (FRUITLAND COAL) | API / UWI 3004531830 | County SAN JUAN | State/Province NEW MEXICO | Edit |
| Original Spud Date 3/17/2005 | Surface Legal Location NMPM_002-030N-009W | East/West Distance (ft) 890.00 | East/West Reference E | North/South Distance (ft) 935.00 | North/South Reference N |

Well Config: 30045318300000, 8/12/2008 7:12:07 AM



Turner B Com A #200S

Current

Basin Fruitland Coal

935' FNL, 890' FEL, Section 2, T-30-N, R-9-W, San Juan County, NM

Lat: _____ / Lat: _____, API #30-045-31830

Today's Date: 8/11/08

Spud. 3/17/05

Completion: 4/12/05

Elevation: 5904' GL
5916' KB

Nacimiento @ surface

12.25" hole

Circulate cement to surface
per Sundry Notice

9.625", 32.3#, H-40 Casing set @ 145'
Cement with 114 sxs, circulate to surface

Ojo Alamo @ 1342' *est

Kirtland @ 1526' *est

2.375" Tubing @ 2746'
(91 joints, 4.7#, J-55, SN @ 2724'
with rods and pump)

Fruitland @ 2326'

8 75" Hole

TOL @ 2472'

7" 20#, J-55 Casing set @ 2493'
Cement with 402 sxs (796 cf)
Circulated to surface per C105

Fruitland Coal Perforations:
2514' - 2708'

6.25" Hole

5.5" 15.5#, J-55 pre-drilled casing liner
set @ 2472' - 2796'
(uncemented)

TD 2796'
PBTD 2795'

Turner B Com A #200S

Proposed P&A Basin Fruitland Coal

935' FNL, 890' FEL, Section 2, T-30-N, R-9-W, San Juan County, NM

Lat: _____ / Lat: _____, API #30-045-31830

Today's Date: 8/11/08

Spud: 3/17/05

Completion: 4/12/05

Elevation: 5904' GL
5916' KB

Nacimiento @ surface

12.25" hole

Circulate cement to surface
per Sundry Notice

9.625", 32.3#, H-40 Casing set @ 145'
Cement with 114 sxs, circulate to surface

Plug #3: 195' – 0'
Class G cement, 45 sxs

Ojo Alamo @ 1342' *est

Plug #2: 1576' – 1292'
Class G cement, 67 sxs

Kirtland @ 1526' *est

Plug #1: 2443' – 2276'
Class G cement, 43 sxs

Fruitland @ 2326'

Set CR @ 2443'

TOL @ 2472'

7" 20#, J-55 Casing set @ 2493'
Cement with 402 sxs (796 cf)
Circulated to surface per C105

8.75" Hole

Fruitland Coal Perforations:
2514' – 2708'

6.25" Hole

5.5" 15.5#, J-55 pre-drilled casing liner
set @ 2472' – 2796'
(uncemented)

TD 2796'
PBTD 2795'

