

submitted in lieu of Form 3160-5

UNITED STATES
DEPARTMENT OF THE INTERIOR
BUREAU OF LAND MANAGEMENT

RECEIVED
SEP 25 2008
Bureau of Land Management
Farmington Field Office

Sundry Notices and Reports on Wells

- | | |
|--|--|
| 1. Type of Well
GAS | 5. Lease Number
NMSF-077764 |
| 2. Name of Operator
BURLINGTON
RESOURCES OIL & GAS COMPANY LP | 6. If Indian, All. or
Tribe Name |
| 3. Address & Phone No. of Operator
PO Box 4289, Farmington, NM 87499 (505) 326-9700 | 7. Unit Agreement Name |
| 4. Location of Well, Footage, Sec., T, R, M
Unit C (NENW), 870' FNL & 1430' FWL, Section 17, T30N, R10W, NMPM | 8. Well Name & Number
Schumacher 1A |
| | 9. API Well No.
30-045-26639 |
| | 10. Field and Pool
Blanco Mesaverde |
| | 11. County and State
San Juan Co., NM |

12. CHECK APPROPRIATE BOX TO INDICATE NATURE OF NOTICE, REPORT, OTHER DATA

Type of Submission	Type of Action	
<input type="checkbox"/> Notice of Intent	<input type="checkbox"/> Abandonment	<input type="checkbox"/> Change of Plans
<input checked="" type="checkbox"/> Subsequent Report	<input type="checkbox"/> Recompletion	<input type="checkbox"/> New Construction
<input type="checkbox"/> Final Abandonment	<input type="checkbox"/> Plugging	<input type="checkbox"/> Non-Routine Fracturing
	<input type="checkbox"/> Casing Repair	<input type="checkbox"/> Water Shut off
	<input type="checkbox"/> Altering Casing	<input type="checkbox"/> Conversion to Injection

☒ Other - Wet Cliffhouse Casing Squeeze

13. Describe Proposed or Completed Operations

RCUD SEP 29 '08
OIL CONS. DIV.

See attached for squeeze detail

DIST. 3

14. I hereby certify that the foregoing is true and correct.

Signed Tracey N. Monroe Tracey N. Monroe Title Staff Regulatory Technician Date 9/24/08

(This space for Federal or State Office use)

APPROVED BY _____ Title _____ Date _____

CONDITION OF APPROVAL, if any:

Title 18 U.S.C. Section 1001, makes it a crime for any person knowingly and willfully to make any department or agency of the United States any false, fictitious or fraudulent statements or representations as to any matter within its jurisdiction

ACCEPTED FOR RECORD

SEP 26 2008

FARMINGTON FIELD OFFICE

NMOCD

Schumacher 1A
API# 30-045-26639

9/2/08 MIRU AWS 746. (Pretreated for H2S On 9/1/08). Tested for H2S @ WH. H2S @ 14 ppm. Retreated w/20 gals of H2S Scavenger. RU H2S monitoring equip. SICIP 535#. Blow down csg. 0 ppm H2S @ flowback tank.

9/3/08 PT tbg prior to unseating pump – no test. Set back horses head. TOOHH w/rods and pump. ND tree. NU BOP. RU Floor. PU 2 3/8" handling tools. PU and LD hanger. GIH tag fill @ 5679' – 15' fill. TOOHH w/2 3/8" tbg. LD 176 jts tbg.

9/4/08 MIRU Bluejet W/L. Ran 4 1/2" GR to 5250'. Set CBP @ 5200'. RD W/L. Tally, PU, TIH w/4 1/2" CST packer to 5190'. Set Packer. Load tbg w/2% KCL H2O test CBP to 1500# 15/min – good test. PU to 4480', set packer. Est injec rate, pumped 4 bpm @ 550#, unseat packer & TOOHH.

9/5/08 TIH w/4 1/2" CST Packer to 4480'. Load hole w/2% KCL H2O. PT csg to 500# 30/min- good test. TOOHH. LD packer. PU TIH w/cement retainer to top of liner.

9/8/08 Blow down well. Monitor for H2S (2 ppm). GIH set retainer @ 4145'. Load backside w/2% KCL H2O. RU Halliburton Cement to squeeze CH. Loaded tbg. Est rate w/fresh water pad. Formation on vacuum. Pumped 196 sx(280 cf-50bbbls) 50/50 POZ Cement. Cement in place @ 12:30 hrs. Sting out of retainer. Pump down tbg to clear cement. RD Halliburton. TOOHH. LD tools. ND BOP. X-O ring gasket. NU BOP.

9/9/08 ND BOP. Clean cement out of ring groove. X-O ring gasket. NU test BOP to 1000# - held OK. PU TIH w/3 7/8" bit to cement Stringer @ 3122'. TIH to 3122' RU swivel. D/O cement stringers from 3122' – 3643'.

9/10/08 D/O cement from 3643' to retainer @ 4145'.

9/11/08 D/O retainer. Drilling cement to 4168'. Circ clean. Pull & LD tbg to top of liner. TIH to TOC @ 4168'. Drilled 2' cement. Plugged bit. TIH to TOL.

9/12/08 Monitor well for H2S (0 ppm). TIH to 4168'. PU swivel, break circ. D/O cement from 4168' – 4365'. D/O cement from 4365' To 4496'.

9/13/08 Monitor well for H2S (0ppm). D/O cement from 4496' – 4511'. Plugged bit. TIH to TOC. Drill cement to 4539'.

9/15/08 Monitor well for H2S (0ppm). Circ hole w/clean water. MIRU Riley Industrial to C/O rig pit. TOOHH w/X-O bits. TIH to TOC @ 4539'.

9/16/08 Monitor well for H2S (0 ppm). TIH w/3 7/8" cement bit. BS on 2 3/8" tbg to TOC @ 4539'. Drill cement from 4539' – 4621'. Drilled cement to 4899'.

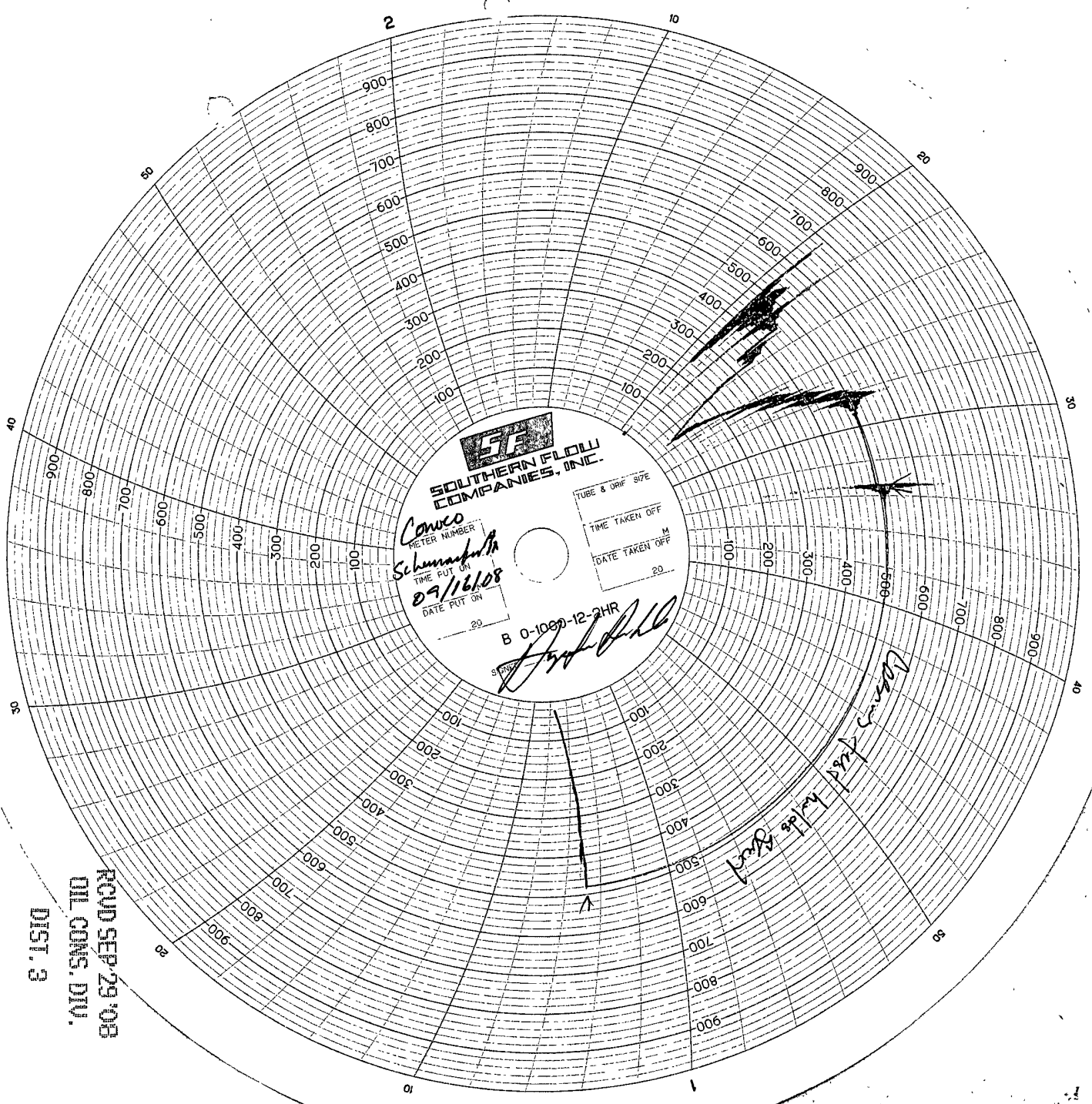
9/17/08 Monitor well for H2S (0ppm). D/O cement from 4899' – 5162'. Btm perf @ 5155'. Circ csg. Tested squeeze to 500# 30 min On 2 hr Chart. Pull 30 STDs to TOL. Unload csg w/air mist.

9/18/08 Monitor well for H2S (0ppm). TIH to 5162'. Unload csg w/air mist. D/O cement stringers to CBP @ 5200'. D/O CBP. C/O to 5544'. H2S increased to 16 ppm. RU NALCO. Treat well w/60 gals H2S Scavenger. Wait for H2S to dissipate. GIH. Tagged fill @ 5565'. Wash out sand to PBTD @ 5694'. TOOHH w/tbg. LD drill collars and bit.

9/19/08 Monitor well for H2S (2ppm). Drift, TIH w/2 3/8" production string. RU Sandline. Set SV in F-Nipple. Load tbg w/2% KCL H2O. PT tbg to 1000# 10/min – good test. RIH w/170 jts 2 3/8" 4.7# J-55 EUE 8RD tbg set @ 5632' F-Nipple @ 5599'. RD floor. ND BOP, NU tree. TIH w/pump & rods, space out rods. Load tbg w/2% KCL H2O. PT tbg w/rig pump to 500# 10/min – good test. Long stroked pump, pressured up to 500# - good test.

9/22/08 Check pump, RU horse head. Hang off rods. RD rig and equipment.

PRINTED IN U.S.A.



SF
SOUTHERN FLOW
COMPANIES, INC.

Conoco
METER NUMBER
Schumann
TIME PUT ON
09/16/08
DATE PUT ON

TUBE & ORIF. SIZE
TIME TAKEN OFF
DATE TAKEN OFF

B 0-1000-12-2HR
Handwritten signature

Conoco Prod. well 8-2-1

RCVD SEP 29 '08
OIL CONS. DIV.
DIST. 3