

DISTRICT I
1625 N. French Dr., Hobbs, N.M. 88240

DISTRICT II
1301 W. Grand Ave., Artesia, N.M. 88210

DISTRICT III
1000 Rio Brazos Rd., Aztec, N.M. 87410

DISTRICT IV
1220 South St. Francis Dr., Santa Fe, NM 87505

"HS DRILLED"
State of New Mexico
Energy, Minerals & Natural Resources Department

OIL CONSERVATION DIVISION

1220 South St. Francis Dr.
Santa Fe, NM 87505

Form C-102

Revised October 12, 2005

Submit to Appropriate District Office

State Lease - 4 Copies

Fee Lease - 3 Copies

ROVD SEP 25 '08

☒ AMENDED REPORT

OIL CONS. DIV.

DIST. 3

WELL LOCATION AND ACREAGE DEDICATION PLAT

¹ API Number 30-045-33575		² Pool Code 71629		³ Pool Name Basin Fruitland Coal	
⁴ Property Code 303831		⁵ Property Name GRASSY CANYON			⁶ Well Number 7
⁷ OGRID No. 5380		⁸ Operator Name XTO ENERGY INC.			⁹ Elevation 6893'

¹⁰ Surface Location

UL or lot no.	Section	Township	Range	Lot Idn	Feet from the	North/South line	Feet from the	East/West line	County
E	30	32-N	7-W	2	1330	NORTH	1385	WEST	SAN JUAN

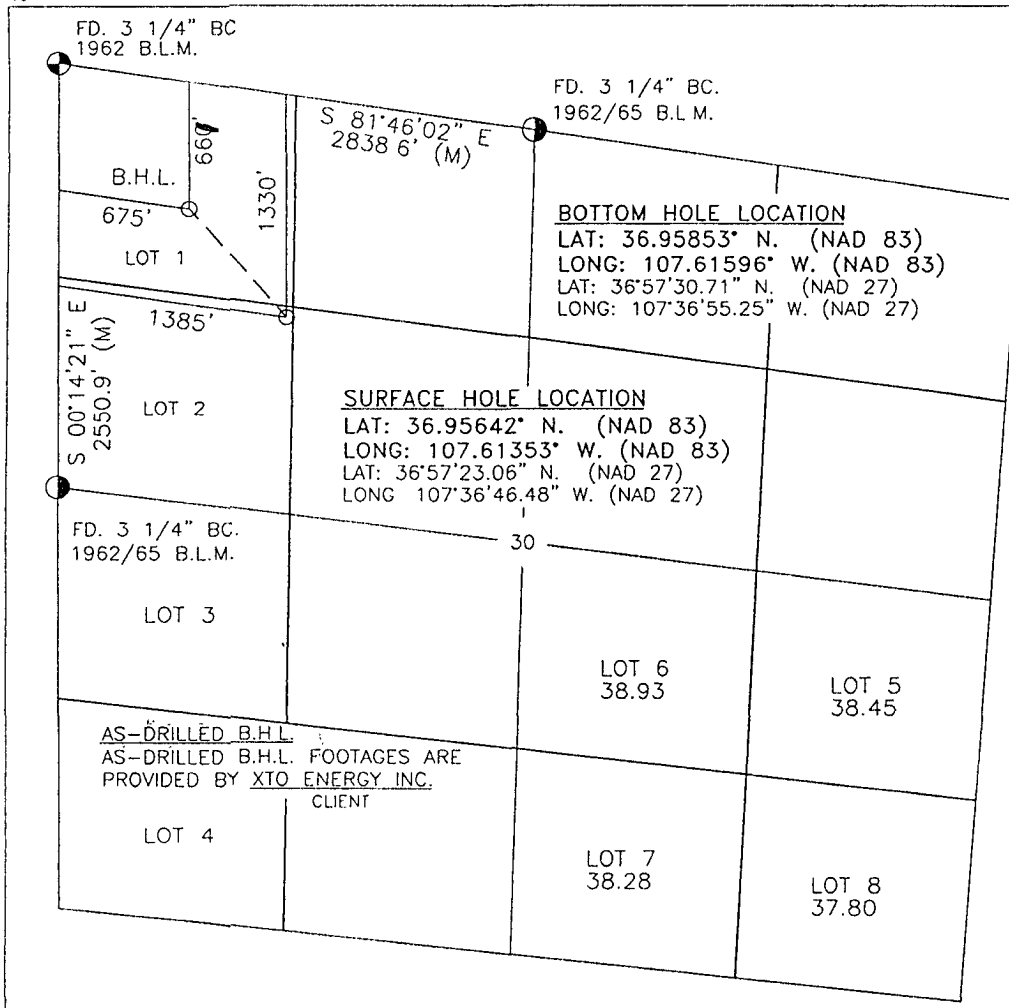
¹¹ Bottom Hole Location If Different From Surface

UL or lot no.	Section	Township	Range	Lot Idn	Feet from the	North/South line	Feet from the	East/West line	County
D	30	32-N	7-W	1	660	NORTH	675	WEST	SAN JUAN

¹² Dedicated Acres 9.25-08		¹³ Joint or Infill		¹⁴ Consolidation Code		¹⁵ Order No.			
---	--	-------------------------------	--	----------------------------------	--	-------------------------	--	--	--

NO ALLOWABLE WILL BE ASSIGNED TO THIS COMPLETION UNTIL ALL INTERESTS HAVE BEEN CONSOLIDATED
OR A NON-STANDARD UNIT HAS BEEN APPROVED BY THE DIVISION

16



17 OPERATOR CERTIFICATION

I hereby certify that the information contained herein is true and complete to the best of my knowledge and belief, and that this organization either owns a working interest or unleased mineral interest in the land including the proposed bottom hole location or has a right to drill this well at this location pursuant to a contract with an owner of such a mineral or working interest, or to a voluntary pooling agreement or a compulsory pooling order heretofore entered by the division.

Dolena Johnson
Signature Date
Dolena Johnson
Printed Name
08-13-08

18 SURVEYOR CERTIFICATION

I hereby certify that the well location shown on this plot was plotted from field notes of actual surveys made by me or under my supervision, and that the same is true and correct to the best of my knowledge and belief.

ROY A. RUSS
Date of Survey
Signature and Seal of Professional Surveyor
8894
07-08
8894

Certificate Number