

**UNITED STATES  
DEPARTMENT OF THE INTERIOR  
BUREAU OF LAND MANAGEMENT**

## Sundry Notices and Reports on Wells

RECEIVED  
SEP 26 2008  
Bureau of Land Management  
Farmington Field Office

1. Type of Well  
GAS

5. Lease Number  
NM-6890

6. If Indian, All. or  
Tribe Name

7. Unit Agreement Name

2. Name of Operator

**BURLINGTON**

RESOURCES OIL & GAS COMPANY LP

8. Well Name & Number  
Reese Mesa 2A

3. Address & Phone No. of Operator

P.O. Box 4289, Farmington, NM 87499

9. API Well No.

30-045-23135

4. Location of Well, Footage, Sec., T, R, M

Unit J (NWSE), 2380' FSL & 1770' FEL, Section 11, T32N, R8W, NMPM

10. Field and Pool  
Blanco MV/Albino PC

11. County and State  
San Juan Co., NM

**12. CHECK APPROPRIATE BOX TO INDICATE NATURE OF NOTICE, REPORT, OTHER DATA**

## Type of Submission

☒ Notice of Intent

☐ Subsequent Report

☐ Final Abandonment

## Type of Action

☐ Abandonment

☐ Recompletion

☐ Plugging

☐ Casing Repair

☐ Altering Casing

☐ Change of Plans

☐ New Construction

☐ Non-Routine Fracturing

☐ Water Shut off

☐ Conversion to Injection

☒ Other - Commingle

RCVD SEP 30 '08

OIL CONS. DIV.

DIST 3

**13. Describe Proposed or Completed Operations**

Burlington Resources intends to remove the packer and commingle this dual Blanco MV/Albino PC well per attached procedures. The DHC has been applied for.

**SEE ATTACHED FOR  
CONDITIONS OF APPROVAL**

**14. I hereby certify that the foregoing is true and correct.**

Signed

*Rhonda Rogers*

Rhonda Rogers

Title Regulatory Technician

Date 9/26/08

(This space for Federal or State Office use)

APPROVED BY

*Wayne Townsend*

Title

*Pet. Eng.*

Date

*9/29/08*

CONDITION OF APPROVAL, if any:

Title 18 U.S.C. Section 1001, makes it a crime for any person knowingly and willfully to make any department or agency of the United States any false, fictitious or fraudulent statements or representations as to any matter within its jurisdiction

*No DHC order 10/2/08*

**NMOCD**

**ConocoPhillips**  
**Reese Mesa 2A (PC/MV)**  
**Downhole Commingle**  
Lat 36° 59' 49.524" N Long 107° 38' 22.524" W

**Prepared By:** Asa Sperry

**Date:** 7/11/2008

**Production Engineering Peer review By:** Soledad Moreno

**Date:** 6/23/2008

**Scope of work:** The intent of this procedure is to commingle the MV and PC formations. By removing the Guiberson Unit Packer #6, and setting only one tubing string of 2 3/8", a plunger will be able to lift fluids off the perforation formations. This will allow both zones to produce more effectively. Uplift estimated at 60 MCFD.

**Est. Rig Days:** 6

**WELL DATA:**

**API:** 3004523135

**Location:** 2380' FNL & 1770' FEL, Section 11– T 32 N – R 08 W

**PBTD:** 6503' **TD:** 6595'

**Perforations:** 3830'-3988' (PC); 6069'-6429' (MV)

<b>Casing:</b>	<b>OD</b>	<b>Wt., Grade</b>	<b>Connection</b>	<b>ID/Drift (in)</b>	<b>Depth</b>
	9-5/8"	36.0#, K-55	ST&C	9.001/8.845	322'
	7"	20.0#, K-55		6.456/6.331	4212'
<b>Liner:</b>	4-1/2"	10.5#, K-55		3.958/3.833	6595'- 4034'
<b>Short String</b>	1 1/2"	2.70#, J55	EUE	1.61/1.516	3955'
<b>Tubing:</b>					
<b>Seating Nipple:</b>	1 1/2"	2.70#, J55		1.61	3956'
<b>Long String</b>	2 3/8"	4.70#, J-55	EUE	1.995/1.901	6408'
<b>Tubing:</b>					
<b>Seating Nipple:</b>	2 3/8"	4.70#, J-55		1.995	6409'

**Well History/ Justification:** Reese Mesa 2A was drilled in 1978. This well was drilled as a single well producing in the Mesa Verde formation. In 1979 the single well was turned to dual production in the PC/MV formations. The well still produces through two tubing strings, one is 1 1/2" and the other is 2 3/8", and has a Guiberson Unit Packer #6 packer separating the formations at 4155'.

**B2 Adapters** are required on all wells other than pumping wells.

**Artificial lift on well (type):** None

**ConocoPhillips**  
**Reese Mesa 2A (PC/MV)**  
**Downhole Commingle**  
Lat 36° 59' 49.524" N Long 107° 38' 22.524" W

**Est. Reservoir Pressure (psig):** 800 (PC) 1200 (MV)

**Well Failure Date:**

**Current Rate (Mcf/d):** 100    **Est. Rate Post Remedial (Mcf/d):** 160

**Earthen Pit Required:** NO

**Special Requirements:**      Several joints of 2-3/8" tubing. Current strings are 1.9" and 2 3/8". Offset spool. Slip grip elevators.

**Production Engineer:** Soledad Moreno      Office: 324-5104, Cell: 320-8529

**Backup Engineer:** Dryonis Pertuso      Office: 599-2409, Cell: 320-6568

**MSO:** Roger Persson      Cell: 793-4426

**Lead:** Howard Self      Office: 324-5127, Cell: 320-2495

**Area Foreman:** Mark Poulson      Cell: 320-2523

**ConocoPhillips**  
**Reese Mesa 2A (PC/MV)**  
**Downhole Commingle**

Lat 36° 59' 49.524" N Long 107° 38' 22.524" W

**PROCEDURE:**

1. Hold pre-job safety meeting. Comply with all NMOCD, BLM, and COPC safety and environmental regulations. Test rig anchors prior to moving in rig.
  2. MIRU workover rig. Check casing, tubing, and bradenhead pressures and record them in Wellview.
  3. RU blow lines from casing valves and begin blowing down casing pressure. Kill well with 2% KCl, if necessary. ND wellhead and NU BOPE.
  4. Release tubing hanger. **Short string** of Tubing is landed @ **3,955'**, Packer is @ **4,155'** (Guiberson Unit Packer #6) Record the fill depth in Wellview.
  5. TOOH with Short string of tubing (detail below).
    - 124jts- 1 1/2" 2.70# J-55 Tubing joints
    - 1- 1 1/2" 2.70# J-55 Tubing pup joint (2')
    - 1- 1 1/2" 2.70# J-55 Tubing joint
    - 1- 1 1/2" Seating Nipple
  6. Visually inspect tubing and record findings in Wellview.
  7. TOOH with **Long string** tubing (MV). Release seal assembly from the Guiberson unit packer #6 with a rotated pickup. Note: Seal assembly was not specified in well files, take caution while pulling out this seal. If the seal does not come out with rotation, try a straight lift out. If seal assembly will not come free, then cut tubing above the packer and fish with overshot and jars. TOOH with MV tubing (**set @ 6,408'**). Visually inspect tubing for corrosion and replace any bad joints, Check tubing for scale build up and notify Operation Engineer.
  8. TOOH with Long string of tubing (detail below).
    - 196jts- 2 3/8" 4.70# J-55 Tubing joints
    - 1- 2 3/8" 4.70# J-55 Tubing pup joint (2')
    - 1- 2 3/8" 4.70# J-55 Tubing joint
    - 1- 2 3/8" Seating Nipple
- RIH with packer mill and plucker. Retrieve complete packer assembly.
9. PU tubing bailer if fill is less than 100' and air package is not on location. TIH, and bail fill to PBTD (6503'). If fill is greater than 100' or air package is on location, utilize the air package to clean out to PBTD (6503'). If scale is on the tubing, spot acid. Contact Rig Superintendent and Engineer for acid volume, concentration, and tubing volume. TOOH. LD tubing bailer (if applicable).
  10. TIH with tubing (detail below). Recommended landing depth is 6,408'. Land FN @ 6,407'.

**ConocoPhillips**  
**Reese Mesa 2A (PC/MV)**  
**Downhole Commingle**

**Lat 36° 59' 49.524" N Long 107° 38' 22.524" W**

- 1- 2-3/8" Muleshoe/ Expendable Check (If fill was bailed during cleanout, utilize a pump out plug in place of expendable check.)
- 1- 2-3/8" F-Nipple
- 1- 2-3/8" 4.7# J-55 Tubing Joint
- 1- 2-3/8" 4.7# J-55 Pup Joint (2')
- 228- 2-3/8" 4.7# J-55 Tubing Joints
- Pups joints as necessary to achieve proper landing depth
- 1- 2-3/8" 4.7# J-55 Tubing Joint

11. Run standing valve on shear tool, load tubing, and pressure test to 1000 psig. Pull standing valve

12. Land tubing, ND BOPE, NU wellhead, and blow out expendable check. Notify MSO that well is ready to be turned over to production. Make a swab run, if necessary, to kick off the well. RDMO.

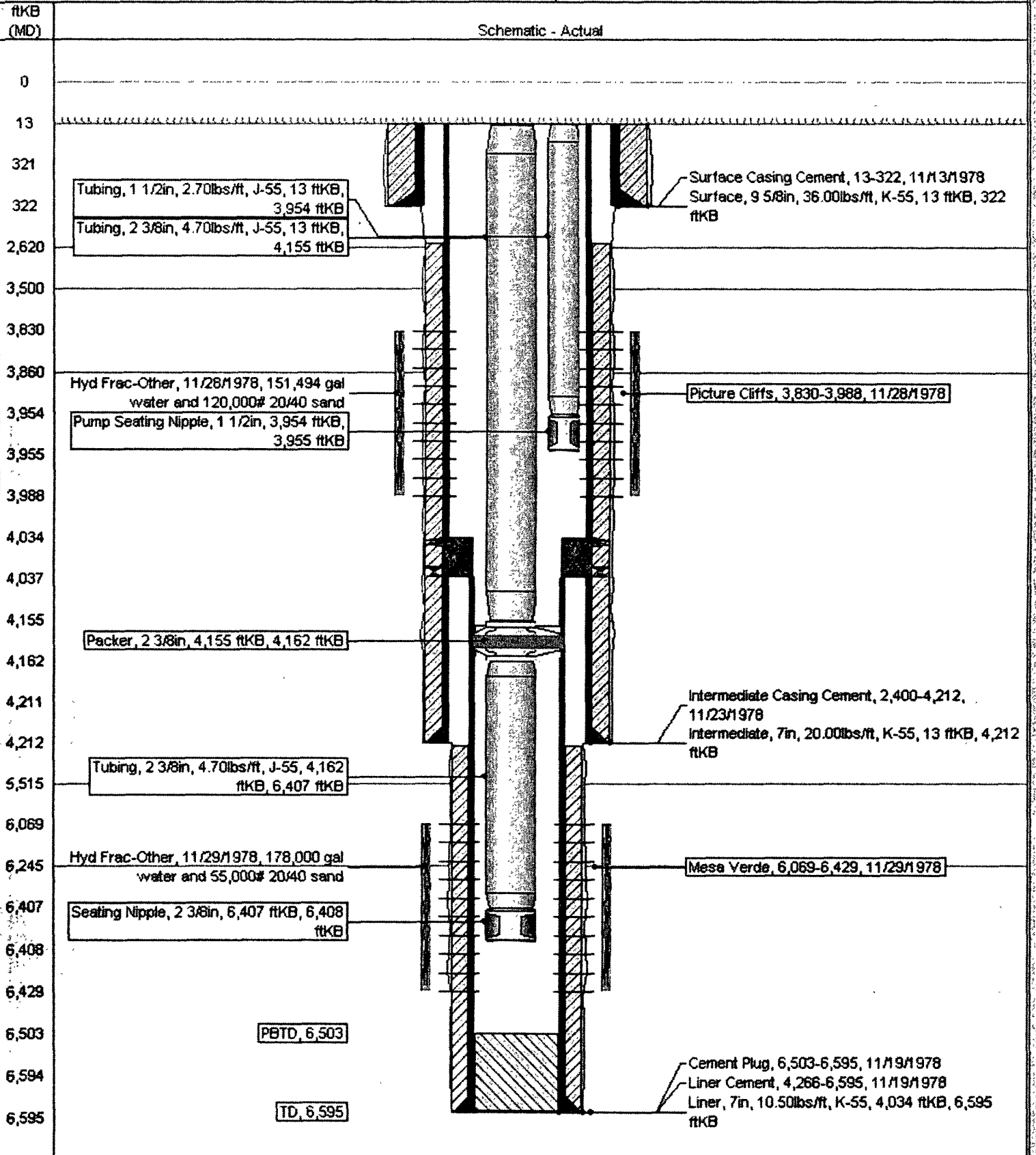
# Current Schematic

ConocoPhillips

Well Name: REESE MESA #2A

API/UVU	Surface Legal Location	Field Name	License No.	State/Province	Well Configuration Type	Edit
3004523135	2289.5 17146. N 81.0 11.0 22.0 4.0 0.0 0.0	BLANCK MESA VERDE OPERATED		NEW MEXICO		
Ground Elevation (ft)	Original KB/RT Elevation (ft)	KB-Grind Distance (ft)	KB-Casing Flange Distance (ft)	KB-Tubing Hanger Distance (ft)		
7,050.00	7,063.00	13.00				

Well Config: - REESE MESA 2A, 9/23/2008 1:51:23 PM



## **BLM CONDITIONS OF APPROVAL**

### ***WORKOVER AND RECOMPLETION OPERATIONS:***

- 1. A properly functioning BOP and related equipment must be installed prior to commencing workover and/or recompletion operations.**
- 2. If this well is in a Seasonal Closure Area, adhere to the closure requirements and timeframes.**
- 3. If casing repair operations are needed, obtain prior approval from this office before commencing repairs**

### ***SURFACE USE OPERATIONS:***

The following Stipulations will apply to this well unless a particular Surface Managing Agency or private surface owner has supplied to BLM and operator a contradictory environmental stipulation. The failure of operator to comply with these requirements may result in assessments or penalties pursuant to 43 CFR 3163.1 or 3163.2. A copy of these conditions of approval shall be present on location during construction, drilling and reclamation activity.

An agreement between operator and fee landowner will take precedence over BLM surface stipulations unless (in reference to 43 CFR Part 3160) 1) BLM determines that operator's actions will affect adjacent Federal or Indian surface, or 2) operator does not maintain well area and lease premises in a workmanlike manner with due regard for safety, conservation and appearance, or 3) no such agreement exists, or 4) in the event of well abandonment, minimal Federal restoration requirements will be required.

***STANDARD STIPULATIONS:*** All surface areas disturbed during work-over activities and not in use for production activities will be reseeded. This should occur in the first 90 days after completion of workover activities.

### ***SPECIAL STIPULATIONS:***

- 1. Pits will be fenced during workover operation.**
- 2. All disturbance will be kept on existing pad.**
- 3. All pits will be pulled and closed immediately upon completion of the workover activities.**
- 4. Pits will be lined with an impervious material at least 12 mils thick.**