

UNITED STATES
DEPARTMENT OF INTERIOR
BUREAU OF LAND MANAGEMENT

SEP 23 2008

FORM APPROVED
Budget Bureau No 1004-0135
Expires: March 31, 1993

SUNDRY NOTICE AND REPORTS ON WELLS

Do not use this form for proposals to drill or to deepen or reentry to a different reservoir. Use "APPLICATION TO DRILL" for permit for such proposals

5. Lease Designation and Serial No.
NMSF-078769

6. If Indian, Allottee or Tribe Name

SUBMIT IN TRIPLICATE

7. If Unit or CA, Agreement Designation
Rosa Unit

1. Type of Well
Oil Well Gas Well ☒ Other

8. Well Name and No
Rosa Unit #187C

2. Name of Operator
WILLIAMS PRODUCTION COMPANY

9. API Well No.
30-039-30185

3. Address and Telephone No.
PO Box 640 Aztec, NM 87410-0640

10. Field and Pool, or Exploratory Area
**BLANCO MESAVERDEV / BASIN
MANCOS / BASIN DAKOTA**

4. Location of Well (Footage, Sec., T., R., M, or Survey Description)
Surface - 1090' FSL & 1145 FWL / BHL - 1724' FSL & 922' FWL, Sec. 21, T31, R5 NMPM

11. County or Parish, State
Rio Arriba, New Mexico

CHECK APPROPRIATE BOX(S) TO INDICATE NATURE OF NOTICE, REPORT, OR OTHER DATA

TYPE OF SUBMISSION

TYPE OF ACTION

Notice of Intent

☒ Subsequent Report

Final Abandonment

Abandonment

Recompletion

Plugging Back

Casing Repair

Altering Casing

☒ Other Completion

Change of Plans

New Construction

Non-Routine Fracturing

Water Shut-Off

Conversion to Injection

Dispose Water

(Note Report results of multiple completion on Well Completion or Recompletion Report and Log form.)

- 13 Describe Proposed or Completed Operations (Clearly state all pertinent details, and give pertinent dates, including estimated date of starting any proposed work. If well is directionally drilled, give subsurface locations and measured and true vertical depths for all markers and zones pertinent to this work.)*

RCVD OCT 1 '08

OIL CONS. DIV.
DIST. 3

09-08-2008

Recap: Road rig to location, spotted all surface equipment. Had to dig and find dead man anchors. Raised derrick and rigged up all equipment. Pressure tested 5-1/2" casing to 1500# for 30 minutes. Good test. Rigged up BWWC gage ring, would not go past 1999', guns tagged @ 8680', ran CBL logs. Rigged down BWWC, nipped up BOP, no accidents. Top of CMT on 5-1/2" @ 4000', some free csg from 4000' to 5900', good cmt from 5900' to 8670'. TOC on 7-5/8", 3958'

09-09-2008

Recap. Pick up tubing off float, unload new tbg, tally, rabbit & pick up trip in hole, tag @ 8670'. Displace hole with KCL. Pull up to 8526' shut in & secure well for night. Ready to spot acid in AM, no accidents.

09-10-2008

Recap: Pressure test to 3000 PSI, (good). Spot acid from 8622 to 8414, RD BJ, trip out of hole, NU FRAC Y and RU BWWC, perforated from 8522' to 8414', 3 shots/ft total 54, 11 gram, .037" shots. RD BWWC re-checked all connections and run line out to hook choke manifold up, SDFN.

14 I hereby certify that the foregoing is true and correct

Signed Larry Higgins
Larry Higgins

Title Drilling C.O.M.

Date 9-23-08

(This space for Federal or State office use)

Approved by _____

Title _____

Date _____

Conditions of approval, if any.

ACCEPTED FOR RECORD

SEP 29 2008

FARMINGTON FIELD OFFICE
BY J. Salvers

NMOCD

Page 2 – RU #187C

09-11-2008

Recap: Rig up BJ & pressure test lines to 5500 PSI. (Good). BD Dakota formation @ 2170 psi, pump 15%HCL acid 1000 gals rate @ 23 bpm, dropped 100 Bio balls Good ball action (3600 psi). Using slick water w/ 94 gals FRW-14, 100% lite prop 108 14/40 mesh, max pressure @ 4800 psi. Pumped pad 89 bbls rate @ 50 bpm & 3297 psi, st .05 ppg 240.3 bbls @ 49.7 bpm & 3439psi. st .10ppg 963bbls @49.7bpm&3497psi., .20 ppg 292bbls @ 50.3 bpm & 3916 psi, st .30 ppg 296.4 @ 51 bpm & 4067 psi, st 100%Tempered LC, 20/40 mesh- 1.50 ppg 57.8 bbls @ 50 bpm & 4134 psi. Flush 50 bpm & 4070 psi. ISDP-3015 psi, 5 min-2503 psi, 10 min-2380psi, 15min-2284 psi. RD BJ, NU BOP, open choke 1/8" to flowback tank. MVCI flow back hand on location for night. Flow back 100 bbls from 1530 to 2400 = down to 800 psi @ 2400 hrs.

09-12-2008

Recap: Flowed well to flow back tank through 1/8" choke @ 700 psi dropped to 400 psi by 7am made 44bbls, JHA safety meet with Key rig crew. Changed choke to 1/4" 400 psi flowing 9.5 bbls/hr no sand, slowed down to 100psi 10bbls/hr opened on 2" line, 80 psi flowing 10 bbls/hr no sand, 50 psi 25bbls/hr no sand, 50 psi 71bbls/hr no sand choked back to 1/2", 130 psi 18bbls/hr no sand. As of midnight to midnight 9-12-08 we recovered 484 bbls in 24/hrs = total of 584 bbls.

09-13-2008

Recap: Flow well back to flow back tank. On 1/2" choke 60 psi, 104 bbls in tank, is making little gas and no sand, flowing well, back water stopped, opened on 2", water started coming back in surges, SIP was 250 psi flowing w/50 psi. Change choke to 1/2", well flowing 40 to 50 psi misting and making little fluid, made 76 bbls total in 24 hrs.

09-14-2008

Recap: Flow well back to flow back tank. On 1/2" choke @ 45 psi, making gas and no sand, light and surging water. Total = 36 bbls in 24 hrs.

09-15-2008

Recap: Flow well to flow back tank, 1/2" choke w/ 40 psi, misting water. Average water 2 bbls all night. Blew well down, staged in hole, unloaded @ 4000' & dried up, unloaded @ 6000' & dried up, unloaded @ 8000' (could not unload), pulled 20 stands & tried unloading (tubing plugged) tripped out of hole. Found 10' of rust & pipe dope, opened up on 1/2" choke to flow back tank, made 60 bbls total.

09-16-2008

Recap: Flow well to flow back tank. 1/2" choke w/ 45psi misting and surging water. Average water 1 bbls/hr. JHA, safety meet w/ Key rig crew and air hand, open on 2" blow well down and clean out expendable check and bottom jt trip in hole w/half millshoe. Staging in hole @ 4000' no water, @ 6000' 20bbls water, @ 8000' 40bbls water. Tagged sand @ 8540, cleaned to 8550', blew hole clean, pulled up to 8400'. Unloaded well no water, **FLOW TEST: Duration = 1hr, Test Method = Pitot, MCF/D = 464 mcf/d, Casing PSI = 9oz, Tubing PSI = 0, due to string float, Gas Type = Wet, Gas Disposition = non-flaring, Choke Size = 2" open line** Flow to tank w/ flowback hand. NO ACCIDENTS

09-17-2008

Recap: Flow well to flow back tank, 2" with flowback hand watching no water. Trip in hole & unload well w/air to see how much water 6 bbls total from 1900hrs. Cleaned out sand from 8550 to 8670 ran sweeps to clean up well. Blew dry, shut down 3 5 hrs let air run out to get gas sample. Got gas sample, tag 5' sand and cleaned out with air/mist and ran sweeps. Pulled above perfs, flow well to flow back tank. 2" with flowback hand watching no water. NO ACCIDENTS

09-18-2008

Recap: Flow well to flow back tank. 2" with flowback hand watching no water. JHA, safety meet w/ Key rig crew and air hand. Trip in hole tag @ 8670' unloaded well with air. (8 bbls water for last 15 hrs) ran 4 bbl sweeps and blew dry. Lay down 9 joints **Land well with half mill shoe, seat nipple and 256 joints @ 8404'**. Rig down floor and ND BOP, nipple up well head. Test well head 3000psi (good). Shut in and secure well, RD rig and all equipment. NO ACCIDENTS

Note: Dakota only completed at this time. Mancos and Mesaverde will be completed at a later date.

ROSA UNIT #187C

BLANCO MV/BASIN MANCOS/BASIN DK

Spud: 7-20-08

Completed: 9-18-08

1st Delivery: 9-22-08

Surface Location:

1090' FSL and 1145' FWL
SW/4 SW/4 Sec 21(M), T31N, R05W
Rio Arriba, NM

Bottom Hole Location:

1724' FSL and 922' FWL
NW/4 SW/4 Sec 21(L), T31N, R05W
Rio Arriba, NM

Elevation: 6801' GR

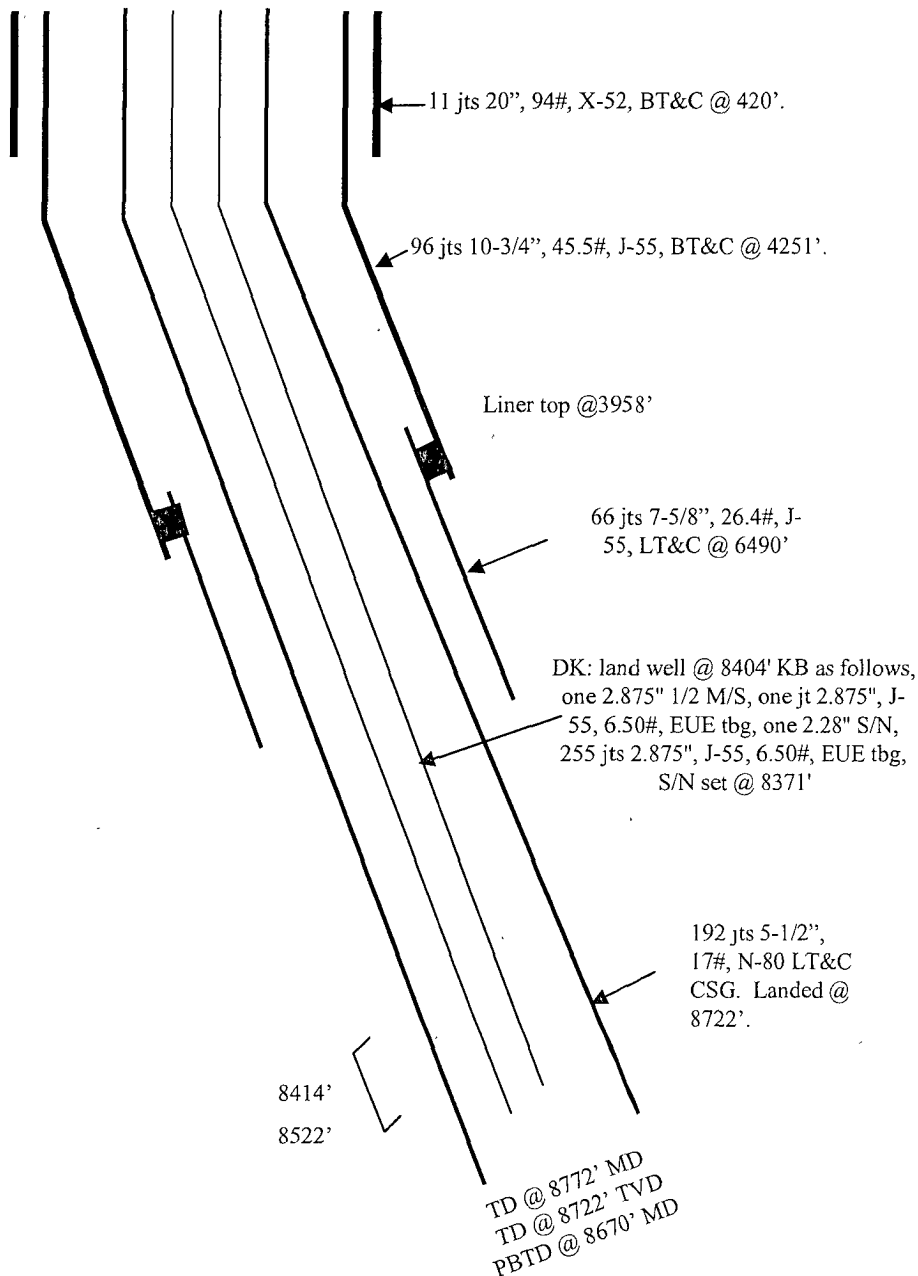
API # 30-039-30185

Top	MD Depth	TVD Depth
Pictured Cliffs	3728'	3681'
Lewis	4016'	3968'
Cliffhouse Ss.	5936'	5888'
Menefee	5980'	5932'
Point Lookout	6185'	6137'
Mancos	6687'	6639'
Dakota	8413'	8364'

Stimulation:

NOTE: Dakota only completed at this time

Dakota: 8414' – 8522' (54, 0 37" holes)
Frac with 9900# Lite Prop 108 14/40,
follow with 3080# Tempered LC 20/40.



Hole Size	Casing	Cement	Volume	Top of Cnt
26"	20", 94#	750 sxs	1207 cu. Ft.	Surface
14-3/4"	10-3/4", 45.5#	2660 sxs	5395 cu.ft.	Surface
9-7/8"	7-5/8", 26.4#	850 sxs	1068 cu.ft.	3958'
6-3/4"	5-1/2", 17#	408 sxs	956 cu.ft.	4000'