

Submit 3 Copies To Appropriate District
Office
District I
1625 N French Dr, Hobbs, NM 87240
District II
1301 W Grand Ave., Artesia, NM 88210
District III
1000 Rio Brazos Rd, Aztec, NM 87410
District IV
1220 S St Francis Dr, Santa Fe, NM
87505

State of New Mexico
Energy, Minerals and Natural Resources

Form C-103

June 19, 2008

OIL CONSERVATION DIVISION
1220 South St. Francis Dr.
Santa Fe, NM 87505

WELL API NO.

30-045-25352

5. Indicate Type of Lease

STATE ☒ FEE ☐

6. State Oil & Gas Lease No.

7. Lease Name or Unit Agreement Name:

STATE GAS COM BA

8. Well Number

#1E

9. OGRID Number

5380

10. Pool name or Wildcat

BASIN DAKOTA

SUNDRY NOTICES AND REPORTS ON WELLS

(DO NOT USE THIS FORM FOR PROPOSALS TO DRILL OR TO DEEPEN OR PLUG BACK TO A DIFFERENT RESERVOIR USE "APPLICATION FOR PERMIT" (FORM C-101) FOR SUCH PROPOSALS.)

1. Type of Well:

Oil Well ☐ Gas Well ☒ Other

2. Name of Operator

XTO ENERGY INC.

3. Address of Operator

382 CR 3100 AZTEC, NM 87410

4. Well Location

Unit Letter E : 1690 feet from the NORTH line and 1150 feet from the WEST line

Section 16 Township 31-N Range 12-W NMPM N.M.P.M. County SAN JUAN

11. Elevation (Show whether DR, RKB, RT, GR, etc.)

6170' GL

12. Check Appropriate Box to Indicate Nature of Notice, Report, or Other Data

NOTICE OF INTENTION TO:

PERFORM REMEDIAL WORK ☐ PLUG AND ABANDON ☐
TEMPORARILY ABANDON ☐ CHANGE PLANS ☐
PULL OR ALTER CASING ☐ MULTIPLE COMPL ☐
DOWNHOLE COMMINGLE ☐

OTHER: RECOMPLETE BLANCO MESAVERDE & DHC ☒

SUBSEQUENT REPORT OF:

REMEDIAL WORK ☐ ALTERING CASING ☐
COMMENCE DRILLING OPNS. ☐ P AND A ☐
CASING/CEMENT JOB ☐

OTHER: ☐

13. Describe proposed or completed operations. (Clearly state all pertinent details, and give pertinent dates, including estimated date of starting any proposed work). SEE RULE 1103. For Multiple Completions: Attach wellbore diagram of proposed completion or recompletion.

XTO Energy Inc. proposes to recomplete this well to the Blanco Mesaverde formation and DHC with the already existing Basin Dakota per the attached procedure & C102.

RCVD OCT 14 '08
OIL CONS. DIV.
DIST. 3

Spud Date:

Rig Release Date:

I hereby certify that the information above is true and complete to the best of my knowledge and belief.

SIGNATURE Dolena Johnson TITLE REGULATORY CLERK DATE 10/10/2008

dee_johnson@xtoenergy.com

Type or print name DOLENA JOHNSON E-mail address: dee_johnson@xtoenergy.com PHONE 505-333-3100

For State Use Only

APPROVED BY [Signature] TITLE Deputy Oil & Gas Inspector, District #3 DATE OCT 14 2008

Conditions of Approval (if any): Approval for recompletion to MV only - Application not complete for DHC.

**State Gas Com BA #1E
Unit E, Sec 16, T31N, R12W
San Juan County, New Mexico**

Mesaverde Completion

AFE#/Well#: MV: 801839 / 71003
Formation: Blanco Mesaverde
Prod. Csg: 5-1/2", 15.5#, csg @ 7,353'
PBTD: 7,306'
Tubing: Unknown. EOT @ 7,226'.
Perfs: DK: 7,099' – 7,234'
Status: PL. 0 BO, 0 BW, 27 MCF, TP 83 psig, CP 82 psig

Mesaverde Completion Procedure

1. MIRU PU. MI \pm 3 jts 2-3/8", 4.7#, J-55, EUE, 8rd tbg. ND WH. NU BOP.
2. PU & TIH w/2-3/8" tbg. Tg for fill. Report any fill to engineer. TOH w/prod tbg. Retrieve plngr & BHBS.
3. TIH w/4-3/4" bit and csg scraper. CO to PBTD @ 7,306'. TOH. LD w/tbg. RDMO PU.
4. MIRU WL and mast trucks. Run GR/CCL from 5,500' to surface. Correlate depth with Dresser Atlas Dual Induction log dated Aug. 22, 1982.
5. MI 6 – 400 bbl frac tanks & 1 flow-back tank. Fill frac tanks w/2% KCl water.
6. RIH and set a 5-1/2" 10K psig CBP at 5,500' (Do not set in csg collars). Blow down well. Load casing with 2% KCl water. Pressure test CBP to 3,250 psig (Max TP). Release pressure.
7. Perf Mesaverde Point Lookout w/3-1/8" csg gun w/1 JSPF with Owen HSC-3125-302 or equivalent performance charges (10 gm, 0.34" dia., 21.42" penetration). Total 31 holes. POH w/csg gun.

Point Lookout Perfs - 31 holes					
5,197'	5,142'	5,048'	4,995'	4,970'	4,930'
5,195'	5,139'	5,044'	4,992'	4,962'	
5,160'	5,126'	5,025'	4,988'	4,957'	
5,158'	5,118'	5,022'	4,984'	4,945'	
5,149'	5,104'	5,012'	4,978'	4,943'	
5,145'	5,096'	5,005'	4,975'	4,934'	

8. MIRU Halliburton frac & acid equip & N₂ transports.
9. BD perfs w/2% KCl water and EIR. Acidize w/1,500 gals 15% NEFE HCl acid and 45 – 7/8" 1.1 SG RCN BS at 10 BPM down 5-1/2" csg. Max TP 3,250 psig. Flush w/5,284 gals 2% KCl water (over flush 3 bbls past btm perf). Record ISIP, 5", 10" and 15" SIPs.
10. RIH w/JB to PBTD. POH w/JB.
11. Frac Mesaverde Point Lookout perfs fr/ 4,930'-5,197' down 5-1/2" csg at 40 BPM with 107,000 gals 70Q N₂ foamed, 12# XL gelled, 2% KCl water (Delta 140) carrying 100,000# 20/40 BASF sand (or equivalent). Max TP 3,250 psig. After seeing a 1 pound drop on the blender, **switch to tub bypass**. Flush 4,803 gals w/Slickwater. Record ISIP & 5" SIP.

Point Lookout Schedule					
Stage	BPM	Fluid	Foam (Gal)	Prop	Cum. Prop
Pad	40	12# 70Q XL foam	22,000		
0.5 ppg	40	12# 70Q XL foam	24,000	12,000# 20/40 BASF	12,000#
1 ppg	40	12# 70Q XL foam	23,000	23,000# 20/40 BASF	35,000#
1.5 ppg	40	12# 70Q XL foam	22,000	33,000# 20/40 BASF	68,000#
2 ppg	40	12# 70Q XL foam	16,000	32,000# 20/40 BASF	100,000#
Flush	40	Slickwater	4,803		
TOTAL		107,000 Gal Foam		100,000# 20/40 BASF	

12. SWI for 30".
13. RIH and set a 5-1/2" 10K psig CBP at 4,900' (Do not set in csg collars). Blow down well. Load casing with 2% KCl water. Pressure test CBP to 3,250 psig (Max TP). Release pressure.
14. Perf Mesaverde Menefee with 3-1/8" select fire csg gun 1 JSPF w/Owen HSC-3125-302 charges or equivalent performance charges (10 gm, 0.34" dia., 21.42" penetration). Ttl 14 holes.

Menefee Perfs - 14 holes				
4,794'	4,780'	4,768'	4,739'	4,710'
4,791'	4,776'	4,753'	4,735'	4,706'
4,788'	4,772'	4,750'	4,714'	

15. BD perfs and EIR with 2% KCl water. Acidize MV perfs 4,706'-4,794' with 1,000 gals of 15% NEFE HCl acid and 25-7/8" 1.1 SG RCN BS down 5-1/2" csg. Max TP 3,250 psig. Flush with 5,003 gals 2% KCl water (over flush 5 bbls past btm perf) at ±15 BPM. Record ISIP & 5" SIP.
16. RIH with JB to PBTD. POH with JB.

17. Frac Mesaverde Menefee perfs 4,706'-4,794' down 5-1/2" csg at 20 BPM with 54,000 gals 70Q, N₂ foamed, 12# XL gelled, 2% KCl water (Delta 140) carrying 50,000# 20/40 BASF sand. Max TP 3,250 psig. Flush 4,579 gals w/70Q N₂ foamed linear gel wtr (3 bbls above top perf). Record ISIP & 5" SIP.

Menefee Schedule					
Stage	BPM	Fluid	Foam (gal)	Prop	Cum Prop
Pad	20	12# 70Q XL foam	12,000		
0.5 ppg	20	12# 70Q XL foam	12,000	6,000# 20/40 BASF	6,000#
1 ppg	20	12# 70Q XL foam	11,000	11,000# 20/40 BASF	17,000#
1.5 ppg	20	12# 70Q XL foam	10,000	15,000# 20/40 BASF	32,000#
2 ppg	20	12# 70Q XL foam	9,000	18,000# 20/40 BASF	50,000#
Flush	20	12# 70Q foam	4,579		
Total		54,000 gals foam		50,000# 20/40 BASF	

18. SWI 3 hrs. RDMO N₂ frac equip.
19. RU integrated flowline to flowback tnk. OWU on 1/4" ck. Have larger ck sizes available. Adjust ck size as needed to unload well w/o bringing back excessive sand. Flow back until sand & N₂ clean up. SWI. RD flowline.
20. MIRU PU. MIRU AFU. ND frac valve. NU BOP.
21. PU & TIH w/4-3/4" bit, 2-3/8" tbg. Tag for fill.
22. Est. circ. CO fill to CBP @ 4,900'. DO CBP.
23. TIH. CO fill to CBP @ 5,500'. TOH. LD bit.
24. TIH w/NC, SN & tbg to ±5,100'.
25. RDMO PU. Flow and tst well as necessary.
26. MIRU PU. MIRU AFU.
27. TIH. CO fill to CBP @ 5,500'. DO CBP.
28. TIH. Tag fill. CO fill to PBTD.
29. TOH. LD bit. RDMO AFU.
30. TIH w/NC, SN & tbg to ±7,200'.
31. ND BOP. NU WH
32. Swab well until KO. RDMO PU.

Regulatory Requirements:

MV completion reports
MV request for allowables
DHC for DK/MV

Services:

Halliburton fracturing and N₂ services
WL
AFU

Equipment List:

6 – 400 bbl frac tanks
1 flow back tank
±3 jts 2-3/8", 4.7#, J-55, EUE, 8rd tbg
4-3/4" bit

District I

1625 N. French Dr., Hobbs, NM 88240

District II

811 South First, Artesia, NM 88210

District III

1000 Rio Brazos Rd., Aztec, NM 87410

District IV

1220 S. St. Francis Dr., Santa Fe, NM 87505

State of New Mexico

Energy, Minerals & Natural Resources Department

OIL CONSERVATION DIVISION

1220 South St. Francis Dr.

Santa Fe, NM 87505

Form C-102

Revised October 12, 2005

Submit to Appropriate District Office

Fee Lease - 3 Copies

State Lease - 4 Copies



AMENDED REPORT

WELL LOCATION AND ACREAGE DEDICATION PLAT

¹ API Number 30-045-25352		² Pool Code 72319		³ Pool Name BLANCO MESAVERDE	
⁴ Property Code 022818		⁵ Property Name STATE GAS COM BA			⁶ Well Number #1E
⁷ OGRID No. 5380		⁸ Operator Name XTO Energy, Inc.			⁹ Elevation 6170'

¹⁰ Surface Location

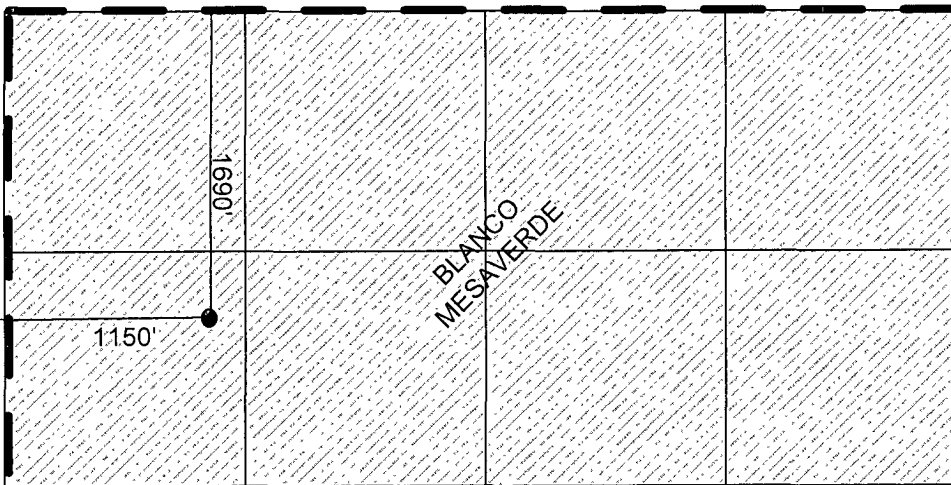
UL or lot no. E	Section 16	Township 31-N	Range 12-W	Lot Idn	Feet from the 1690	North/South line NORTH	Feet from the 1150	East/West line WEST	County SAN JUAN
--------------------	---------------	------------------	---------------	---------	-----------------------	---------------------------	-----------------------	------------------------	--------------------

¹¹ Bottom Hole Location If Different From Surface

UL or lot no.	Section	Township	Range	Lot Idn	Feet from the	North/South line	Feet from the	East/West line	County
---------------	---------	----------	-------	---------	---------------	------------------	---------------	----------------	--------

¹² Dedicated Acres MV 320 ACRES	¹³ Joint or Infill	¹⁴ Consolidation Code	¹⁵ Order No.
---	-------------------------------	----------------------------------	-------------------------

NO ALLOWABLE WILL BE ASSIGNED TO THIS COMPLETION UNTIL ALL INTERESTS HAVE BEEN CONSOLIDATED OR A NON-STANDARD UNIT HAS BEEN APPROVED BY THE DIVISION

¹⁷ OPERATOR CERTIFICATION

I hereby certify that the information contained herein is true & complete to the best of my knowledge & belief and that this organization either owns a working interest or unleased mineral interest in the land including the proposed bottom hole location or has a right to drill this well at this location pursuant to a contract with an owner of such a mineral or working interest, or to a voluntary pooling agreement or a compulsory pooling order heretofore entered by the division

Dolena C Johnson
Signature

Dolena Johnson
Printed Name

Regulatory Clerk
Title

Date

10/10/2008

Date

¹⁸ SURVEYOR CERTIFICATION

I hereby certify that the well location shown on this plat was plotted from field notes of actual surveys made by me or under my supervision, and that the same is true & correct to the best of my belief.

6/23/1984

Date of Survey

Original Survey Signed By:

John A. Vukonich

14831

Certificate Number