

UNITED STATES  
DEPARTMENT OF INTERIOR  
BUREAU OF LAND MANAGEMENT

RECEIVED

OCT 21 2008

FORM APPROVED  
Budget Bureau No. 1004-0135

SUNDRY NOTICE AND REPORTS ON WELLS

Do not use this form for proposals to drill or to deepen or reentry to a different reservoir. Use "APPLICATION TO DRILL" for permit for such proposals

5. Lease Designation and Serial No.  
SF-078773  
Bureau of Land Management  
Farmington Field Office

SUBMIT IN TRIPLICATE		6. If Indian, Allottee or Tribe Name
1. Type of Well Oil Well <input checked="" type="checkbox"/> Gas Well <input type="checkbox"/> Other <input type="checkbox"/>		7. If Unit or CA, Agreement Designation Rosa Unit
2. Name of Operator WILLIAMS PRODUCTION COMPANY		8. Well Name and No. Rosa Unit #77
3. Address and Telephone No. PO BOX 3102 MS 25-4, TULSA, OK 74101 (918) 573-3046		9. API Well No. 30-039-22538
4. Location of Well (Footage, Sec., T., R., M., or Survey Description) 1820' FSL, 810' FWL, NW/4 SW/4, SEC 33, T31N, R5W		10. Field and Pool, or Exploratory Area GALLUP/BLANCO MV/BASIN DK
		11. County or Parish, State Rio Arriba, NM

CHECK APPROPRIATE BOX(s) TO INDICATE NATURE OF NOTICE, REPORT, OR OTHER DATA

TYPE OF SUBMISSION	TYPE OF ACTION
Notice of Intent	Abandonment
<input checked="" type="checkbox"/> Subsequent Report	Recompletion
Final Abandonment	Plugging Back
	Casing Repair
	Altering Casing
	<input checked="" type="checkbox"/> Other <u>Commingle</u>
	Change of Plans
	New Construction
	Non-Routine Fracturing
	Water Shut-Off
	Conversion to Injection
	Dispose Water
	(Note: Report results of multiple completion on Well Completion or Recompletion Report and Log form.)

13. Describe Proposed or Completed Operations (Clearly state all pertinent details, and give pertinent dates, including estimated date of starting any proposed work. If well is directionally drilled, give subsurface locations and measured and true vertical depths for all markers and zones pertinent to this work.)\*

09-02-2008

Load R&E at Rosa 233A. RD R&E from Rosa 233A to Rosa 77. Sierra graded and filled in hole & ditches on loc. MI & spotted R&E, set up w/ rig mast, NU w/ circ pump. Fill FT w/ 2% kcl. 200 psi on csg and both tbg strings. Bled down to FB tank and kill w/ kcl, ND w/ Xmas tree. Unable to set blanking plugs in LS or SS tbg (bastard wellhead). Both strings landed w/ 21/16" tbg hgr. Ordered out Wireline truck to set CW plugs -- no one available until Wednesday morning. Set up Wireline equip for Wed AM to set CW plugs at 0700 hrs. NU w/BOP and function tested same. Installed working platform, ran lift subs up through BOP and secured w/ TIW valves, rigged to pull tubing, SDFN.

RCUD OCT 23 '08

OIL CONS. DIV.

DIST. 3

Continued on attached sheets:

DHC 4085

14. I hereby certify that the foregoing is true and correct

Signed

*Rachel Lipperd*  
Rachel Lipperd

Title Engineering Technician II

Date October 20, 2008

(This space for Federal or State office use)

ACCEPTED FOR RECORD

Approved by

Title

Date

OCT 22 2008

Conditions of approval, if any:

FARMINGTON FIELD OFFICE

Title 18 U.S.C. Section 1001, makes it a crime for any person knowingly and willfully to make to any department or agency of the United States any false, fictitious or fraudulent statements or representations as to any matter within its jurisdiction.

NMOCD

#### 09-03-2008

Csg & tbg = 170# - bled to FB tank. MIRU w/ Tefteller WL equip. Ran GR to 300', set CW plug @ 100'. ND w/ WL equip, unland 11/4" SS tbg. TOH w/ SS tbg. Rec 177 jts 11/4" x 2.33#, 1 1/4" tbg in good cond. ND w/ off-set spool & tbg stripper, NU w/ tbg stripper - replace BOP rams w/ 11/2" rams. Rig up w/ equip, TIH to rec CW plug. Plug fell down hole. TIH w/ wireline OS, loc CW plug @ 1000', fished CW plug. ND w/ Tefteller WL equip, unlanded 11/2" LS tbg & attempted to work stinger out of Model D pkr. Work LS tbg @ 35,000# -- parted. TOH w/ 11/2" LS fish, laid down in sgls. Rec 44 jts 11/2" x 2.9# LS tbg = 1428'. Body break - tbg badly eat up with inside corrosion. Change BOP rams to 23/8". Made up 4 11/16" OS w/ 1.9" BG, TIH w/ fish assembly on 2 3/8" WS tbg - picked tbg up in sgls - meas same. Unable to eng fish (may be short jt - leave box up). TOH w/ tbg, change to 2 1/2" BG, TIH w/ tbg & O, engaged fish at 1447', MSFN.

#### 09-04-2008

Csg = 170# - BD to FB tank. MIRU w/ WL Specialties, TIH w/ 1.44" FP tool. Tool stopped @ 3644' - no go. TOH w/ FP tool, TIH w/ 13/8" Jet cutter, worked cutter down to pkr top @ 6023'. Made Jet cut @ 5986.5', cut 1 1/2" above collar on the first jt above pkr -- possibly save a trip by fishing for box, may not have to dress chem cut with a mill run. Chem cutter hung up coming out of hole, worked cutter out of hole. RD w/ WL Spec tools, TOH w/ WS tbg & fish assembly. Rec 141 jts 11/2" x 2.9# LS tbg, fish top flared out too bad to run in after the collar, will run a concave mill and dress fish top. Top of fish @ 5986', one jt 1 1/2" LS fish left on top of pkr, SDFN.

#### 09-05-2008

Made up 4 3/4" concave mill assembly -- TIH w/ mill assembly on 23/8" WS tbg -- meas & pick tbg up in sgls. Tag fish top @ 5990'. NU w/ power swivel & air pack. Broke circ in 45 min @ 500 psi. Disp 15 bbls form wtr. Milled from 5990' to - 5993' dressing fish top. Circ wellbore clean & made soap sweeps. ND w/ air pack & per swivel. TOH w/ WS tbg & mill assembly. Made up w/ 4 11/16" OS w/ 1.9" basket grapple - 31/8" bumper sub - 31/8" jars - 4 x 31/8" drill collars - 31/8" accelerator. Tripped in hole w/ fishing assembly on 2 3/8" WS tbg. Hung tbg off above all perforations at 5500', made well safe for night.

NOTE -- RIG AND EQUIPMENT WILL BE SHUT DOWN UNTIL

MONDAY 09/08/08

#### 09-08-2008

Csg = 170# - BD to FB tank. Comp TIH w/ WS tbg & fish assembly. Tagged fish top @ 5994'. Singled out w/ drill line to 4 line string up. Engaged fish @ 5994', jarred on 11/2" LS fish @ 60,000#, jarred free. Dbl up w/ drill line to 2 line string up. TOH w/ WS tbg & fish assembly. Rec 1 jt 11/2" LS tbg - parted at the upset = 34.10'. Leaving upset piece above sealbore assembly, made up 4 1/2" mill shoe dressed to 43/4" w/ 31/2" ID -- 33/4" jars -- 4 x 31/3" drill collars. Tripped in hole with mill assembly on 2 3/8" workstring tbg, hung off above all perforations at 5500', SDFN. NOTE -- FLOOR HAND MASHED FINGERNAIL ON MIDDLE FINGER OF RIGHT HAND. INVESTIGATED AND REPORTED TO RONNIE SHORTER OF WILLIAMS SAFETY DEPT.

#### 09-09-2008

Csg = 190# - bled to FB tank. TDH w/ WS tbg & mill assembly - tagged frac sand fill @ 5997'. Singled out w/ drill line to 4 line string up w/ line indicator. NU w/ PS and AP. Break circ w/ 12 bph A/S/CI in 25 min @ 540 psi -- disp 15 bbls form wtr w/ air. Circ frac sand fill from 5997' to top of Model D prod pkr @ 5997'. Rig broke down. Called out mechanics. Worked on rig -- replaced clutch and computer system. TIH w/ tbg, hung off above all perfs at 5500', MSFN.

#### 09-10-2008

Csg = 190 psi - bled down to FB tank. TDH w/ WS tbg and mill assembly. Tagged top of Model D prod pkr at 6027' - no fill entry overnight. NU w/ PS & AP. Broke circ w/ 12 bph A/S/CI in 25 min @ 500 psi. Disp 5 bbls form wtr w/ air. Circ & rotated over prod pkr from 6027' to 6030' -- pkr dropped & fell down hole to 6042'. Chased down hole & milled at 6042' for 90 min - unable to make any hole. Very restricted air flow. Made soap sweeps. ND w/ PS & AP. Dbl up w/ drill line to 2 line string up. TOH w/ WS tbg & mill assembly. Mill assembly indicated -- good clean cut, made well safe for night.

#### 09-11-2008

230 # csg - bled to FB tank. Made up 4 11/16" overshot w/ 3 1/2" basket grapple - 3 3/4" bumper sub - 3 3/4" jars - 4 x 3 1/2" drill collars - 3 1/2" accelerator. TIH w/ fishing assembly on 2 3/8" WS tbg. Tagged fish top @ 6027'. Singled out w/ drilling line to 4 line string up w/ line indicator, engaged LS fish at 6027'. Jarred on fish at 60,000#, got fish moving up hole, fish dragging for first 300'. Doubled up w/ drilling line to 2 line string up. TOH w/ WS tbg and fish assembly. Rec Seal Bore assembly -- 62 jts 11/2" x 2.9# LS tbg - seat nipple - mule shoe. Rec all of LS fish, laid 1 1/2" tbg down in singles. Left pkr mandrel and milled off slips in hole. Made up 4 1/2" mill shoe w/ extension / dressed to 4 3/4" -- 3 3/4" jars - 4 x 3 1/2" drill collars. TIH w/ mill shoe assembly on 2 3/8" WS tbg, hung off above all perfs @ 5500', made well safe for night.

09-12-2008

Csg = 230 psi - BD to FB tank. TDH w/ 2 3/8" WS tbg and MS assembly to 6042'. Single out w/ DL to 4 line string up w/ line indicator. TIH w/ from 6042' to pkr remnants at 8065' --- picked WS tbg up in singles - measured & rabbited same. NU w/ PS & AP, break circ w/ 12 bph A/S/CI in 40 min @ 800 psi. Disp 25 bbls form wtr w/ air. Circ & rotated - milling up & over prod pkr remnants from 8065' to 8116' = 25' rat hole below bottom perf. Recovered hvy frac sand - metal & junk iron. Making 1 1/2 cups sand in 5 gal bucket test. Recovering 1 bph form wtr, made soap sweeps. ND w/ PS & AP, double up w/ DL to 2 line string up. TUH w/ tbg & mill shoe assembly. Hung off at 5500' above all perms, made well safe for night.

09-15-2008

Csg = 250 psi - BD to FB tank, TDH w/ 2 3/8" w/ 2 3/8" WS tbg & mill assembly. Tag fill @ 8090' = 26' FS fill over weekend. PBTD @ 8116', NU w/ AP & break circ w/ 10 bph A/S/CI in 30 min @ 600#. Disp 11 bbls FW w/ air, circ w/ air -- CO frac sand fill from 8090' to PBTD @ 8116'. Circ w/ air - rec 1/2 bph form wtr and 1 1/4 cup frac sand in 5 gal bucket test. Circ wellbore clean & made soap sweeps. ND w/ AP, TOH w/ 2 3/8" WS tbg & mill assembly -- laid WS tbg down in singles. Broke down & loaded out w/ mill assembly and drill collars, made well safe for night.

09-16-2008

Csg = 250# - bled to FB tank & killed w/ kcl. Made up mule shoe - 2 3/8" x 6' pup jt - 1.875" X-Nipple - 16 jts 2 3/8" x 10-NUE tbg --- TIH w/ same on 2 3/8" x 8-EUE new tbg - picked tbg up in sgls -- meas and rabbit same. Landed tbg w/ X-nipple @ 8060' & overall @ 8068'. ND & loaded out w/ PS. ND w/ work platform and BOP. Nippled up w/ new Xmas tree. NU w/ air pack. Pump ahead w/ 4 bbls kcl. Pump off check at 700#. Mix 20 gal BJ Technoclean w/ 10 bbls kcl and circ around wellbore. Circ w/ air & rec load wtr. ND w/ air pack. Load out w/ rig tools & clean loc. Laid down w/ rig mast. Made ready to move out w/ rig & equip in morn --- 9/17/08. Moving to Rosa # 18-A.

# ROSA UNIT #77 GALLUP/BLANCO MV/BASIN DK

**Location:** 1820' FSL, 810' FWL  
NW/4 SW/4 Section 33(L), T31N, R5W  
Rio Arriba Co., NM

**Elevation:** 6531' GR 6546' KB

**API #** 30-039-22538

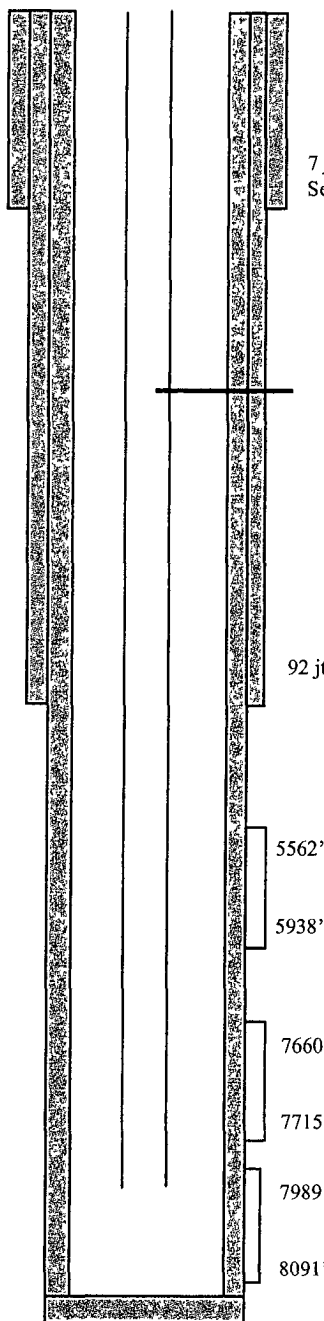
Spud Date 11/05/80  
Completed 05/05/81

<i>Tops</i>	<i>Depth</i>
Ojo Alamo	2633'
Kirtland	2765'
Fruitland	3204'
Pictured Cliffs	3463'
Lewis	3567'
Cliff House	5562'
Point Lookout	5795'
Mancos	5902'
Gallup	7660'
Greenhorn	7805'
Graneros	7860'
Dakota	7982'

Mesa Verde 5562' - 5938' (27, 0.37" holes)  
80,000# of 20/40 sand in 102,000 gal fluid.

Laguna Seca Gallup 7660' - 7715' (112, 0.37" holes)  
55,300# of 20/40 sand in 45,550 gal fluid.

Dakota 7989' - 8091' (132, 0.37" holes)  
223,000# of 20/40 sand in 88,950 gal fluid.



7 jts of 10 3/4", 40.5#, K-55 ST&C csg.  
Set @ 329'

MV/DK Tubing: 249 jts of 2 3/8", J-55 tbg landed @  
8068' as follows: .62' muleshoe, 6' x 2 3/8" pup jt,  
1.875" X-Nipple @ 8060', 16 jts 2 3/8", J-55, 10-NUE,  
4.6# tbg, 233 jts 2 3/8", J-55, 8-EUE, 4.7# tbg

92 jts of 7-5/8", 26.4#, K-55 LT&C csg. Set @ 3770'

5562'

5938'

7660'

7715'

7989'

8091'

202 jts of 5-1/2", 17# N-80 LT&C csg.  
Set @ 8165'

PBTD @ 8116'

<i>HOLE SIZE</i>	<i>CASING</i>	<i>CEMENT</i>	<i>CMT TOP</i>
17 1/4"	10 3/4"	450 sx	Surface
9 7/8"	7 5/8"	210 sx	2650' (TS)
6 3/4"	5 1/2"	300 sx	3100' (TS)