

## District I

1625 N French Dr, Hobbs, NM 88240

## District II

1301 W Grand Ave, Artesia, NM 88210

## District III

1000 Rio Brazos Rd, Aztec, NM 87410

## District IV

1220 S St Francis Dr, Santa Fe, NM 87505

State of New Mexico  
Energy Minerals and Natural ResourcesDepartment  
Oil Conservation Division  
1220 South St. Francis Dr.  
Santa Fe, NM 87505

Form C-144

July 21, 2008

For temporary pits, closed-loop systems, and below-grade tanks, submit to the appropriate NMOCD District Office

For permanent pits and exceptions submit to the Santa Fe Environmental Bureau office and provide a copy to the appropriate NMOCD District Office

1829

Pit, Closed-Loop System, Below-Grade Tank, or  
Proposed Alternative Method Permit or Closure Plan Application

- Type of action:
- ☐ Permit of a pit, closed-loop system, below-grade tank, or proposed alternative method
- ☐ Closure of a pit, closed-loop system, below-grade tank, or proposed alternative method
- ☐ Modification to an existing permit
- ☒ Closure plan only submitted for an existing permitted or non-permitted pit, closed-loop system, below-grade tank, or proposed alternative method

**Instructions: Please submit one application (Form C-144) per individual pit, closed-loop system, below-grade tank or alternative request**

Please be advised that approval of this request does not relieve the operator of liability should operations result in pollution of surface water, ground water or the environment. Nor does approval relieve the operator of its responsibility to comply with any other applicable governmental authority's rules, regulations or ordinances.

1

Operator: Burlington Resources Oil & Gas Company, LP OGRID#: 14538

Address: PO Box 4289, Farmington, NM 87499

Facility or well name: McDurmitt 1P

API Number: 30-045-34478 OCD Permit Number: \_\_\_\_\_

U/L or Qtr/Qtr: B(NWNE) Section: 6 Township: 31N Range: 12W County: San Juan

Center of Proposed Design: Latitude: 36.933414' N Longitude: 108.133705' W NAD: ☐ 1927 ☒ 1983

Surface Owner: ☐ Federal ☐ State ☒ Private ☐ Tribal Trust or Indian Allotment

2

☒ **Pit:** Subsection F or G of 19.15.17.11 NMAC

Temporary: ☒ Drilling ☐ Workover

☐ Permanent ☐ Emergency ☐ Cavitation ☐ P&A

☒ Lined ☐ Unlined Liner type: \_\_\_\_\_ Thickness 20 mil ☒ LLDPE ☐ HDPE ☐ PVC ☐ Other \_\_\_\_\_

☒ String-Reinforced

Liner Seams: ☒ Welded ☒ Factory ☐ Other \_\_\_\_\_ Volume: 4400 bbl Dimensions L 65' x W 45' x D 10'

3

☐ **Closed-loop System:** Subsection H of 19.15.17.11 NMAC

Type of Operation: ☐ P&A ☐ Drilling a new well ☐ Workover or Drilling (Applies to activities which require prior approval of a permit or notice of intent)

☐ Drying Pad ☐ Above Ground Steel Tanks ☐ Haul-off Bins ☐ Other \_\_\_\_\_

☐ Lined ☐ Unlined Liner type: \_\_\_\_\_ Thickness \_\_\_\_\_ mil ☐ LLDPE ☐ HDPE ☐ PVD ☐ Other \_\_\_\_\_

Liner Seams: ☐ Welded ☐ Factory ☐ Other \_\_\_\_\_

4

☐ **Below-grade tank:** Subsection I of 19.15.17.11 NMAC

Volume: \_\_\_\_\_ bbl Type of fluid: \_\_\_\_\_

Tank Construction material: \_\_\_\_\_

☐ Secondary containment with leak detection ☐ Visible sidewalls, liner, 6-inch lift and automatic overflow shut-off

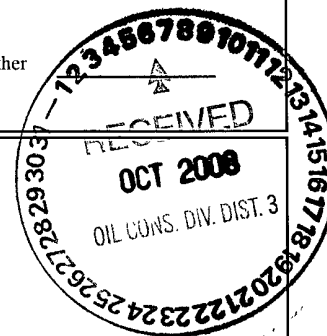
☐ Visible sidewalls and liner ☐ Visible sidewalls only ☐ Other \_\_\_\_\_

Liner Type: \_\_\_\_\_ Thickness \_\_\_\_\_ mil ☐ HDPE ☐ PVC ☐ Other \_\_\_\_\_

5

☐ **Alternative Method:**

Submittal of an exception request is required. Exceptions must be submitted to the Santa Fe Environmental Bureau office for consideration of approval.



6	<p><b>Fencing:</b> Subsection D of 19.15.17.11 NMAC (<i>Applies to permanent pit, temporary pits, and below-grade tanks</i>)</p> <p><input type="checkbox"/> Chain link, six feet in height, two strands of barbed wire at top (<i>Required if located within 1000 feet of a permanent residence, school, hospital, institution or church</i>)</p> <p><input type="checkbox"/> Four foot height, four strands of barbed wire evenly spaced between one and four feet</p> <p><input checked="" type="checkbox"/> Alternate Please specify <u>4' hogwire fence with a single strand of barbed wire on top.</u></p>
7	<p><b>Netting:</b> Subsection E of 19.15.17.11 NMAC (<i>Applies to permanent pits and permanent open top tanks</i>)</p> <p><input type="checkbox"/> Screen <input type="checkbox"/> Netting <input type="checkbox"/> Other _____</p> <p><input type="checkbox"/> Monthly inspections (<i>If netting or screening is not physically feasible</i>)</p>
8	<p><b>Signs:</b> Subsection C of 19.15.17.11 NMAC</p> <p><input type="checkbox"/> 12" X 24", 2" lettering, providing Operator's name, site location, and emergency telephone numbers</p> <p><input checked="" type="checkbox"/> Signed in compliance with 19.15.3 103 NMAC</p>
9	<p><b>Administrative Approvals and Exceptions:</b></p> <p>Justifications and/or demonstrations of equivalency are required. Please refer to 19.15.17 NMAC for guidance.</p> <p><i>Please check a box if one or more of the following is requested, if not leave blank:</i></p> <p><input type="checkbox"/> Administrative approval(s): Requests must be submitted to the appropriate division district of the Santa Fe Environmental Bureau office for consideration of approval.</p> <p><input type="checkbox"/> Exception(s): Requests must be submitted to the Santa Fe Environmental Bureau office for consideration of approval.</p>
10	<p><b>Siting Criteria (regarding permitting):</b> 19.15.17.10 NMAC</p> <p><i>Instructions: The applicant must demonstrate compliance for each siting criteria below in the application. Recommendations of acceptable source material are provided below. Requests regarding changes to certain siting criteria may require administrative approval from the appropriate district office or may be considered an exception which must be submitted to the Santa Fe Environmental Bureau Office for consideration of approval. Applicant must attach justification for request. Please refer to 19.15.17.10 NMAC for guidance. Siting criteria does not apply to drying pads or above grade-tanks associated with a closed-loop system.</i></p> <p><b>Ground water is less than 50 feet below the bottom of the temporary pit, permanent pit, or below-grade tank.</b></p> <p>- NM Office of the State Engineer - iWATERS database search; USGS; Data obtained from nearby wells</p> <p><input type="checkbox"/> Yes <input checked="" type="checkbox"/> No</p> <p><b>Within 300 feet of a continuously flowing watercourse, or 200 feet of any other watercourse, lakebed, sinkhole, or playa lake (measured from the ordinary high-water mark).</b></p> <p>- Topographic map; Visual inspection (certification) of the proposed site</p> <p><input type="checkbox"/> Yes <input checked="" type="checkbox"/> No</p> <p><b>Within 300 feet from a permanent residence, school, hospital, institution, or church in existence at the time of initial application.</b></p> <p>(<i>Applies to temporary, emergency, or cavitation pits and below-grade tanks</i>)</p> <p>- Visual inspection (certification) of the proposed site; Aerial photo; Satellite image</p> <p><input type="checkbox"/> Yes <input checked="" type="checkbox"/> No</p> <p><b>Within 1000 feet from a permanent residence, school, hospital, institution, or church in existence at the time of initial application.</b></p> <p>(<i>Applied to permanent pits</i>)</p> <p>- Visual inspection (certification) of the proposed site; Aerial photo; Satellite image</p> <p><input type="checkbox"/> Yes <input checked="" type="checkbox"/> NA</p> <p><b>Within 500 horizontal feet of a private, domestic fresh water well or spring that less than five households use for domestic or stock watering purposes, or within 1000 horizontal feet of any other fresh water well or spring, in existence at the time of initial application.</b></p> <p>- NM Office of the State Engineer - iWATERS database search; Visual inspection (certification) of the proposed site.</p> <p><input type="checkbox"/> Yes <input checked="" type="checkbox"/> No</p> <p><b>Within incorporated municipal boundaries or within a defined municipal fresh water well field covered under a municipal ordinance adopted pursuant to NMSA 1978, Section 3-27-3, as amended</b></p> <p>- Written confirmation or verification from the municipality; Written approval obtained from the municipality</p> <p><input type="checkbox"/> Yes <input checked="" type="checkbox"/> No</p> <p><b>Within 500 feet of a wetland.</b></p> <p>- US Fish and Wildlife Wetland Identification map; Topographic map; Visual inspection (certification) of the proposed site</p> <p><input type="checkbox"/> Yes <input checked="" type="checkbox"/> No</p> <p><b>Within the area overlying a subsurface mine.</b></p> <p>- Written confirmation or verification or map from the NM EMNRD - Mining and Mineral Division</p> <p><input type="checkbox"/> Yes <input checked="" type="checkbox"/> No</p> <p><b>Within an unstable area.</b></p> <p>- Engineering measures incorporated into the design; NM Bureau of Geology &amp; Mineral Resources; USGS; NM Geological Society; Topographic map</p> <p><input type="checkbox"/> Yes <input checked="" type="checkbox"/> No</p> <p><b>Within a 100-year floodplain</b></p> <p>- FEMA map</p> <p><input type="checkbox"/> Yes <input checked="" type="checkbox"/> No</p>

11

**Temporary Pits, Emergency Pits and Below-grade Tanks Permit Application Attachment Checklist:** Subsection B of 19.15 17.9 NMAC  
*Instructions: Each of the following items must be attached to the application. Please indicate, by a check mark in the box, that the documents are attached.*

- ☐ Hydrogeologic Report (Below-grade Tanks) - based upon the requirements of Paragraph (4) of Subsection B of 19 15.17 9 NMAC  
☒ Hydrogeologic Data (Temporary and Emergency Pits) - based upon the requirements of Paragraph (2) of Subsection B of 19 15.17 9  
☒ Siting Criteria Compliance Demonstrations - based upon the appropriate requirements of 19 15.17.10 NMAC  
☒ Design Plan - based upon the appropriate requirements of 19 15 17.11 NMAC  
☒ Operating and Maintenance Plan - based upon the appropriate requirements of 19.15.17.12 NMAC  
☒ Closure Plan (Please complete Boxes 14 through 18, if applicable) - based upon the appropriate requirements of Subsection C of 19.15 17.9 NMAC and 19.15.17.13 NMAC

☐ Previously Approved Design (attach copy of design) API \_\_\_\_\_ or Permit \_\_\_\_\_

12

**Closed-loop Systems Permit Application Attachment Checklist:** Subsection B of 19.15 17.9 NMAC

*Instructions: Each of the following items must be attached to the application. Please indicate, by a check mark in the box, that the documents are attached*

- ☐ Geologic and Hydrogeologic Data (only for on-site closure) - based upon the requirements of Paragraph (3) of Subsection B of 19 15.17.9  
☐ Siting Criteria Compliance Demonstrations (only for on-site closure) - based upon the appropriate requirements of 19.15.17.10 NMAC  
☐ Design Plan - based upon the appropriate requirements of 19.15.17.11 NMAC  
☐ Operating and Maintenance Plan - based upon the appropriate requirements of 19.15.17.12 NMAC  
☐ Closure Plan (Please complete Boxes 14 through 18, if applicable) - based upon the appropriate requirements of Subsection C of 19 15.17.9 NMAC and 19.15.17.13 NMAC

☐ Previously Approved Design (attach copy of design) API \_\_\_\_\_

☐ Previously Approved Operating and Maintenance Plan API \_\_\_\_\_

13

**Permanent Pits Permit Application Checklist:** Subsection B of 19.15 17.9 NMAC

*Instructions: Each of the following items must be attached to the application. Please indicate, by a check mark in the box, that the documents are attached.*

- ☐ Hydrogeologic Report - based upon the requirements of Paragraph (I) of Subsection B of 19 15.17.9 NMAC  
☐ Siting Criteria Compliance Demonstrations - based upon the appropriate requirements of 19.15 17.10 NMAC  
☐ Climatological Factors Assessment  
☐ Certified Engineering Design Plans - based upon the appropriate requirements of 19 15.17 11 NMAC  
☐ Dike Protection and Structural Integrity Design: based upon the appropriate requirements of 19.15.17.11 NMAC  
☐ Leak Detection Design - based upon the appropriate requirements of 19.15.17.11 NMAC  
☐ Liner Specifications and Compatibility Assessment - based upon the appropriate requirements of 19.15.17.11 NMAC  
☐ Quality Control/Quality Assurance Construction and Installation Plan  
☐ Operating and Maintenance Plan - based upon the appropriate requirements of 19.15 17.12 NMAC  
☐ Freeboard and Overtopping Prevention Plan - based upon the appropriate requirements of 19.15.17.11 NMAC  
☐ Nuisance or Hazardous Odors, including H2S, Prevention Plan  
☐ Emergency Response Plan  
☐ Oil Field Waste Stream Characterization  
☐ Monitoring and Inspection Plan  
☐ Erosion Control Plan  
☐ Closure Plan - based upon the appropriate requirements of Subsection C of 19.15 17.9 NMAC and 19.15.17.13 NMAC

14

**Proposed Closure:** 19.15.17 13 NMAC

*Instructions: Please complete the applicable boxes, Boxes 14 through 18, in regards to the proposed closure plan.*

Type: ☒ Drilling ☐ Workover ☐ Emergency ☐ Cavitation ☐ P&A ☐ Permanent Pit ☐ Below-grade Tank ☐ Closed-loop System  
☐ Alternative

Proposed Closure Method: ☐ Waste Excavation and Removal  
☐ Waste Removal (Closed-loop systems only)  
☒ On-site Closure Method (only for temporary pits and closed-loop systems)  
☒ In-place Burial ☐ On-site Trench  
☐ Alternative Closure Method (Exceptions must be submitted to the Santa Fe Environmental Bureau for consideration)

15

**Waste Excavation and Removal Closure Plan Checklist:** (19.15.17.13 NMAC) *Instructions: Each of the following items must be attached to the closure plan. Please indicate, by a check mark in the box, that the documents are attached.*

- ☐ Protocols and Procedures - based upon the appropriate requirements of 19.15 17.13 NMAC  
☐ Confirmation Sampling Plan (if applicable) - based upon the appropriate requirements of Subsection F of 19.15.17 13 NMAC  
☐ Disposal Facility Name and Permit Number (for liquids, drilling fluids and drill cuttings)  
☐ Soil Backfill and Cover Design Specifications - based upon the appropriate requirements of Subsection H of 19.15.17 13 NMAC  
☐ Re-vegetation Plan - based upon the appropriate requirements of Subsection I of 19.15.17.13 NMAC  
☐ Site Reclamation Plan - based upon the appropriate requirements of Subsection G of 19.15.17.13 NMAC

**Waste Removal Closure For Closed-loop Systems That Utilize Above Ground Steel Tanks or Haul-off Bins Only:** (19.15.17.13.D NMAC)

*Instructions: Please identify the facility or facilities for the disposal of liquids, drilling fluids and drill cuttings. Use attachment if more than two facilities are required.*

Disposal Facility Name: \_\_\_\_\_ Disposal Facility Permit #: \_\_\_\_\_

Disposal Facility Name: \_\_\_\_\_ Disposal Facility Permit #: \_\_\_\_\_

Will any of the proposed closed-loop system operations and associated activities occur on or in areas that *will not* be used for future service and operations?

☐ Yes (If yes, please provide the information) ☐ No

*Required for impacted areas which will not be used for future service and operations:*

☐ Soil Backfill and Cover Design Specification - based upon the appropriate requirements of Subsection H of 19.15.17.13 NMAC

☐ Re-vegetation Plan - based upon the appropriate requirements of Subsection I of 19.15.17.13 NMAC

☐ Site Reclamation Plan - based upon the appropriate requirements of Subsection G of 19.15.17.13 NMAC

**Siting Criteria (Regarding on-site closure methods only:** 19.15.17.10 NMAC

*Instructions: Each siting criteria requires a demonstration of compliance in the closure plan. Recommendations of acceptable source material are provided below. Requests regarding changes to certain siting criteria may require administrative approval from the appropriate district office or may be considered an exception which must be submitted to the Santa Fe Environmental Bureau office for consideration of approval. Justifications and/or demonstrations of equivalency are required. Please refer to 19.15.17.10 NMAC for guidance.*

Ground water is less than 50 feet below the bottom of the buried waste.

- NM Office of the State Engineer - iWATERS database search; USGS; Data obtained from nearby wells

☐ Yes ☒ No

☐ N/A

Ground water is between 50 and 100 feet below the bottom of the buried waste

- NM Office of the State Engineer - iWATERS database search; USGS; Data obtained from nearby wells

☐ Yes ☒ No

☐ N/A

Ground water is more than 100 feet below the bottom of the buried waste

- NM Office of the State Engineer - iWATERS database search; USGS; Data obtained from nearby wells

☒ Yes ☐ No

☐ N/A

Within 300 feet of a continuously flowing watercourse, or 200 feet of any other significant watercourse or lakebed, sinkhole, or playa lake (measured from the ordinary high-water mark)

- Topographic map, Visual inspection (certification) of the proposed site

☐ Yes ☒ No

Within 300 feet from a permanent residence, school, hospital, institution, or church in existence at the time of initial application.

- Visual inspection (certification) of the proposed site; Aerial photo; satellite image

☐ Yes ☒ No

☐ Yes ☒ No

Within 500 horizontal feet of a private, domestic fresh water well or spring that less than five households use for domestic or stock watering purposes, or within 1000 horizontal feet of any other fresh water well or spring, in existence at the time of the initial application.

- NM Office of the State Engineer - iWATERS database; Visual inspection (certification) of the proposed site

☐ Yes ☒ No

Within incorporated municipal boundaries or within a defined municipal fresh water well field covered under a municipal ordinance adopted pursuant to NMSA 1978, Section 3-27-3, as amended.

- Written confirmation or verification from the municipality; Written approval obtained from the municipality

☐ Yes ☒ No

Within 500 feet of a wetland

- US Fish and Wildlife Wetland Identification map; Topographic map; Visual inspection (certification) of the proposed site

☐ Yes ☒ No

Within the area overlying a subsurface mine.

- Written confirmation or verification or map from the NM EMNRD-Mining and Mineral Division

☐ Yes ☒ No

Within an unstable area.

- Engineering measures incorporated into the design; NM Bureau of Geology & Mineral Resources; USGS; NM Geological Society; Topographic map

☐ Yes ☒ No

Within a 100-year floodplain

- FEMA map

**On-Site Closure Plan Checklist:** (19.15.17.13 NMAC) *Instructions: Each of the following items must be attached to the closure plan. Please indicate, by a check mark in the box, that the documents are attached.*

☒ Siting Criteria Compliance Demonstrations - based upon the appropriate requirements of 19.15.17.10 NMAC

☒ Proof of Surface Owner Notice - based upon the appropriate requirements of Subsection F of 19.15.17.13 NMAC

☐ Construction/Design Plan of Burial Trench (if applicable) based upon the appropriate requirements of 19.15.17.11 NMAC

☐ Construction/Design Plan of Temporary Pit (for in place burial of a drying pad) - based upon the appropriate requirements of 19.15.17.11 NMAC

☒ Protocols and Procedures - based upon the appropriate requirements of 19.15.17.13 NMAC

☐ Confirmation Sampling Plan (if applicable) - based upon the appropriate requirements of Subsection F of 19.15.17.13 NMAC

☒ Waste Material Sampling Plan - based upon the appropriate requirements of Subsection F of 19.15.17.13 NMAC

☒ Disposal Facility Name and Permit Number (for liquids, drilling fluids and drill cuttings or in case on-site closure standards cannot be achieved)

☒ Soil Cover Design - based upon the appropriate requirements of Subsection H of 19.15.17.13 NMAC

☒ Re-vegetation Plan - based upon the appropriate requirements of Subsection I of 19.15.17.13 NMAC

☒ Site Reclamation Plan - based upon the appropriate requirements of Subsection G of 19.15.17.13 NMAC

19

**Operator Application Certification:**

I hereby certify that the information submitted with this application is true, accurate and complete to the best of my knowledge and belief.

Name (Print): Crystal Tafoya Title: Regulatory Technician  
 Signature: *Crystal Tafoya* Date: 10/3/08  
 e-mail address: crystal.tafoya@conocophillips.com Telephone: 505-326-9837

20

**OCD Approval:** ☐ Permit Application (including closure plan) ☒ Closure Plan (only) ☐ OCD Conditions (see attachment)

OCD Representative Signature: *Brandon Penell* Approval Date: 11-4-08

Title: EnviroSpec OCD Permit Number: \_\_\_\_\_

21

**Closure Report (required within 60 days of closure completion):** Subsection K of 19 15 17 13 NMAC

Instructions: Operators are required to obtain an approved closure plan prior to implementing any closure activities and submitting the closure report. The closure report is required to be submitted to the division within 60 days of the completion of the closure activities. Please do not complete this section of the form until an approved closure plan has been obtained and the closure activities have been completed.

☐ Closure Completion Date: \_\_\_\_\_

22

**Closure Method:**

- ☐ Waste Excavation and Removal ☐ On-site Closure Method ☐ Alternative Closure Method ☐ Waste Removal (Closed-loop systems only)  
☐ If different from approved plan, please explain.

23

**Closure Report Regarding Waste Removal Closure For Closed-loop Systems That Utilize Above Ground Steel Tanks or Haul-off Bins Only:**

Instructions: Please identify the facility or facilities for where the liquids, drilling fluids and drill cuttings were disposed. Use attachment if more than two facilities were utilized.

Disposal Facility Name: \_\_\_\_\_ Disposal Facility Permit Number: \_\_\_\_\_

Disposal Facility Name: \_\_\_\_\_ Disposal Facility Permit Number: \_\_\_\_\_

Were the closed-loop system operations and associated activities performed on or in areas that will *not* be used for future service and operations?

- ☐ Yes (If yes, please demonstrate compliance to the items below) ☐ No

Required for impacted areas which will not be used for future service and operations.

- ☐ Site Reclamation (Photo Documentation)  
☐ Soil Backfilling and Cover Installation  
☐ Re-vegetation Application Rates and Seeding Technique

24

**Closure Report Attachment Checklist:** Instructions: Each of the following items must be attached to the closure report. Please indicate, by a check mark in the box, that the documents are attached.

- ☐ Proof of Closure Notice (surface owner and division)  
☐ Proof of Deed Notice (required for on-site closure)  
☐ Plot Plan (for on-site closures and temporary pits)  
☐ Confirmation Sampling Analytical Results (if applicable)  
☐ Waste Material Sampling Analytical Results (if applicable)  
☐ Disposal Facility Name and Permit Number  
☐ Soil Backfilling and Cover Installation  
☐ Re-vegetation Application Rates and Seeding Technique  
☐ Site Reclamation (Photo Documentation)

On-site Closure Location: Latitude: \_\_\_\_\_ Longitude: \_\_\_\_\_ NAD ☐ 1927 ☐ 1983

25

**Operator Closure Certification:**

I hereby certify that the information and attachments submitted with this closure report is true, accurate and complete to the best of my knowledge and belief. I also certify that the closure complies with all applicable closure requirements and conditions specified in the approved closure plan.

Name (Print): \_\_\_\_\_ Title: \_\_\_\_\_

Signature: \_\_\_\_\_ Date: \_\_\_\_\_

e-mail address: \_\_\_\_\_ Telephone: \_\_\_\_\_

**New Mexico Office of the State Engineer  
POD Reports and Downloads**

Township: 31N Range: 12W Sections: 5,6,7,8

NAD27 X: Y: Zone: ☐ Search Radius:

County: ☐ Basin: ☐ Number: Suffix:

Owner Name: (First) (Last) ☐ Non-Domestic ☐ Domestic  
☒ All

POD / Surface Data Report

Avg Depth to Water Report

Water Column Report

Clear Form

iWATERS Menu

Help

**WATER COLUMN REPORT 10/03/2008**

(quarters are 1=NW 2=NE 3=SW 4=SE)  
(quarters are biggest to smallest)

POD Number	Tws	Rng	Sec	q	q	q	Zone	X	Y	Depth Well	Depth Water	Water Column
SJ 02904	31N	12W	08	4	4	4				325	142	18

Record Count: 1

**New Mexico Office of the State Engineer  
POD Reports and Downloads**

Township: 31N Range: 13W Sections: 1,12

NAD27 X: Y: Zone: ☐ Search Radius: |

County: ☐ Basin: ☐ Number: Suffix:

Owner Name: (First) (Last) ☐ Non-Domestic ☐ Domestic  
☒ All

POD / Surface Data Report

Avg Depth to Water Report

Water Column Report

Clear Form

iWATERS Menu

Help

**WATER COLUMN REPORT 10/03/2008**

(quarters are 1=NW 2=NE 3=SW 4=SE)

(quarters are biggest to smallest)

POD Number	Tws	Rng	Sec	q	q	q	Zone	X	Y	Depth Well	Depth Water	Wate Colun
------------	-----	-----	-----	---	---	---	------	---	---	---------------	----------------	---------------

No Records found, try again

**New Mexico Office of the State Engineer  
POD Reports and Downloads**

---

Township: 32N Range: 13W Sections: 36

NAD27 X: Y: Zone: ☐ Search Radius:County: ☐ Basin: ☐ Number: Suffix:Owner Name: (First) (Last) ☐ Non-Domestic ☐ Domestic  
☒ All

POD / Surface Data Report

Avg Depth to Water Report

Water Column Report

Clear Form

iWATERS Menu

Help

---

**WATER COLUMN REPORT 10/03/2008**

(quarters are 1=NW 2=NE 3=SW 4=SE)

(quarters are biggest to smallest)

POD Number	Tws	Rng	Sec	q	q	q	Zone	X	Y	Depth Well	Depth Water	Water Column
------------	-----	-----	-----	---	---	---	------	---	---	---------------	----------------	-----------------

No Records found, try again



*New Mexico Office of the State Engineer*  
**POD Reports and Downloads**

Township: 32N Range: 12W Sections: 31,32

NAD27 X: Y: Zone: ☐ Search Radius:

County: ☐ Basin: ☐ Number: Suffix:

Owner Name: (First) (Last) ☐ Non-Domestic ☐ Domestic

☒ All

POD / Surface Data Report

Avg Depth to Water Report

Water Column Report

Clear Form

iWATERS Menu

Help

**WATER COLUMN REPORT 10/03/2008**

(quarters are 1=NW 2=NE 3=SW 4=SE)

(quarters are biggest to smallest)

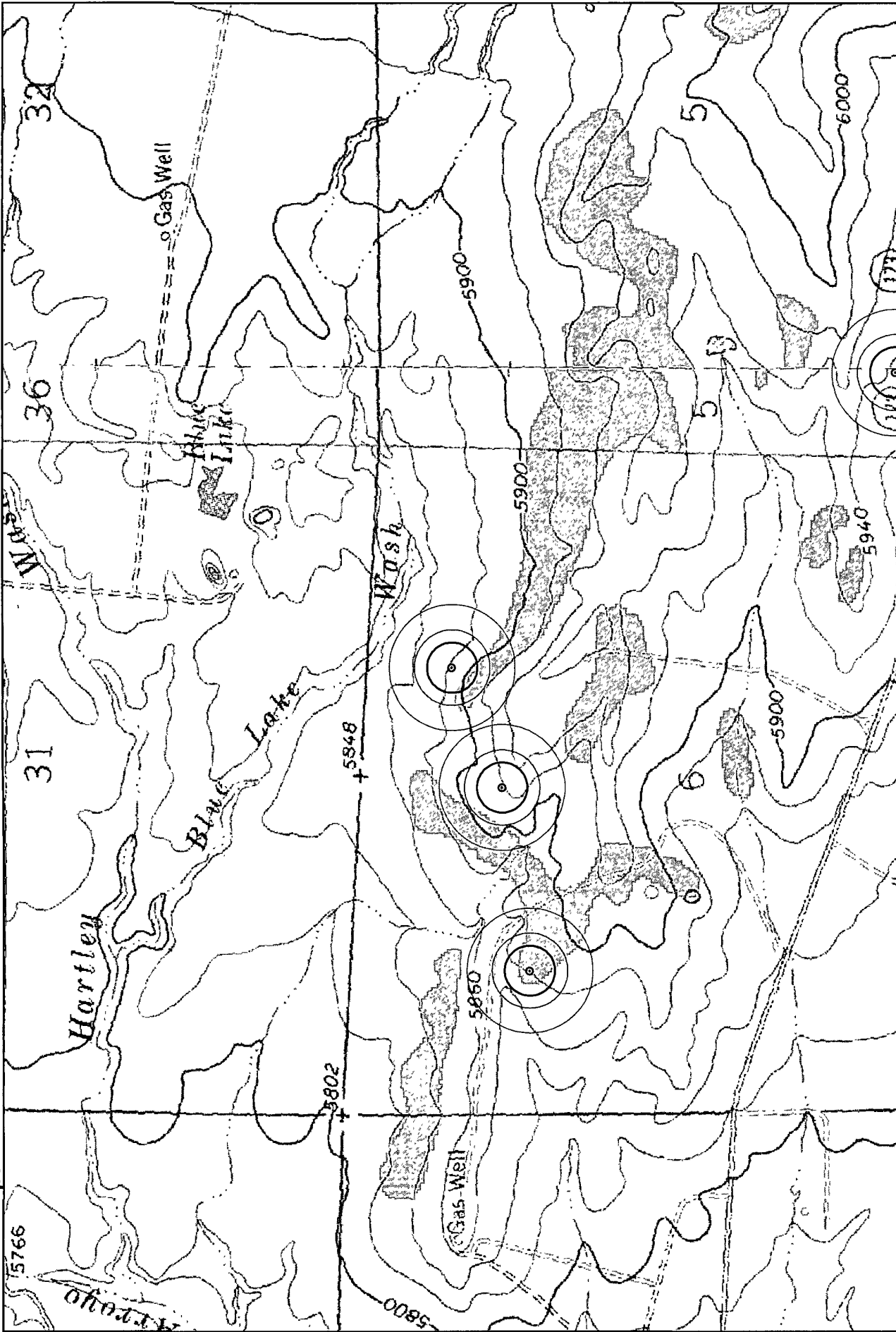
POD Number	Tws	Rng	Sec	q	q	q	Zone	X	Y	Depth Well	Depth Water	Water Column
------------	-----	-----	-----	---	---	---	------	---	---	---------------	----------------	-----------------

No Records found, try again

N

# MCDURMITT 1P

ConocoPhillips



Data Source

Aerial flown locally Sedgewick in 2005.

Wetlands Data Acquired from U.S. Fish and Wildlife Htp://wetlandsrms.er.usgs.gov

USGS Topo

COPCathodic  
 iWaters

300  
 500  
 200

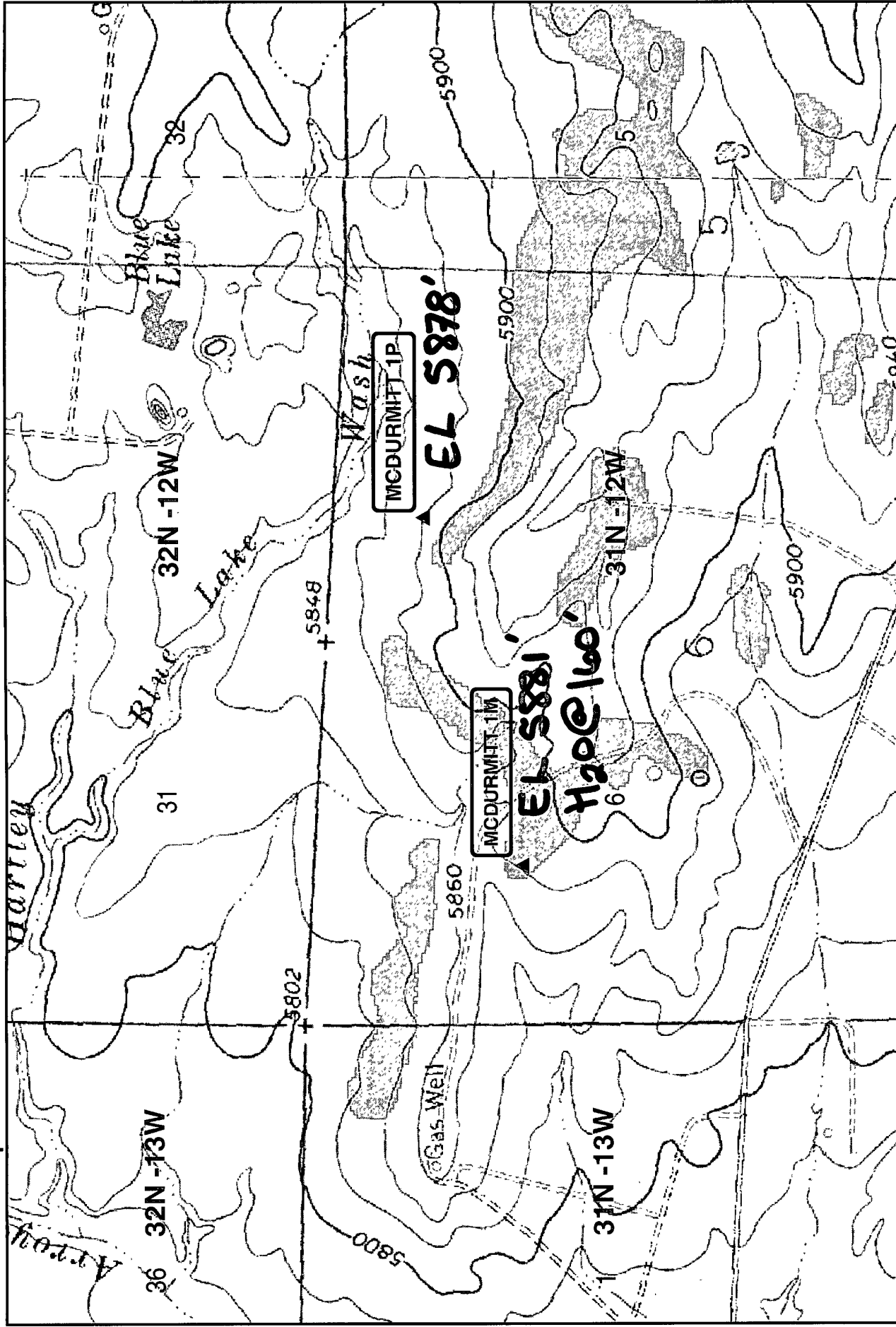
Wetlands  
 City Limits

NAD 1983 SP

NM West\_FIPS\_3003

Sep 22, 2008

1:12,000



3191

E

30-045-26257

DATA SHEET FOR DEEP GROUND BED CATHODIC PROTECTION WELLS  
NORTHWESTERN NEW MEXICO

(Submit 3 copies to OCD Aztec Office)

Operator MERIDIAN OIL INC. Location: Unit E Sec. 6 Twp 31 Rng 12Name of Well/Wells or Pipeline Serviced McDURMITT #1M

cps 1990w

Elevation 5881' Completion Date 9/1/88 Total Depth 360' Land Type\* N/ACasing, Sizes, Types & Depths N/AIf Casing is cemented, show amounts & types used N/A

If Cement or Bentonite Plugs have been placed, show depths &amp; amounts used

N/A

Depths &amp; thickness of water zones with description of water when possible:

Fresh, Clear, Salty, Sulphur, Etc. 160' SAMPLE TAKENDepths gas encountered: N/AType & amount of coke breeze used: N/ADepths anodes placed: 340', 305', 295', 285', 275', 265', 255', 240', 225', 200'Depths vent pipes placed: 360'Vent pipe perforations: 260'Remarks: gb #1**RECEIVED**

MAY 31 1991.

**OIL CON. DIV.**

DIS 3

If any of the above data is unavailable, please indicate so. Copies of all logs, including Drillers Log, Water Analyses & Well Bore Schematics should be submitted when available. Unplugged abandoned wells are to be included.

\*Land Type may be shown: F-Federal; I-Indian; S-State; P-Fee.  
If Federal or Indian, add Lease Number.

# WELL CASING CATHODIC PROTECTION CONSTRUCTION REPORT DAILY LOG

Drilling Log (Attach Hereto) ☒comp  
9-2-88

Completion Date 9-1-88

CFS	Well Name Line or Plant	Work Order #	State	Ins. Union Check
1990W	MCDurmit #1-M	53969A	MOON = .918	<input checked="" type="checkbox"/> Good <input type="checkbox"/> Bad
Location	Anode Size	Anode Type	Size Bit	
EB-31-12	2" x 60"	Duriron	6 3/4"	
Depth Drilled	Depth Logged	Casing Log Time	Total Cts. Ckts. Used	Lost Circulation Mat. Used
360'	360'			
Anode Depth				
= 1 340	= 2 305	= 3 295	= 4 285	= 5 275
= 6 265	= 7 255	= 8 240	= 9 225	= 10 200
Anode Output (Amperes)				
= 1 2.5	= 2 3.8	= 3 4.1	= 4 4.1	= 5 4.4
= 6 4.4	= 7 5.8	= 8 5.6	= 9 4.2	= 10 4.2
Anode Depth				
= 1 170	= 2	= 3	= 4	= 5
= 6	= 7	= 8	= 9	= 10
Anode Output (Amperes)				
= 1 4.5	= 2	= 3	= 4	= 5
= 6	= 7	= 8	= 9	= 10
Total Circuit Resistance				
Volts 11.80	amps 22.4	Time 52		

Remarks: Static Water at 140'; water sample taken.  
Installed 360' of 1" PVC vent pipe bottom 260' perforated.  
#1 anode sandbed in.

GRB 4074.00  
Rectifier Size: 40 V 16 A 669.00  
Add'l Depth: 140' @ 3.60 - 490.00  
Extra Cable: 200' @ .24 48.00  
Ditch & 1 Cable: 180' @ .70 126.00

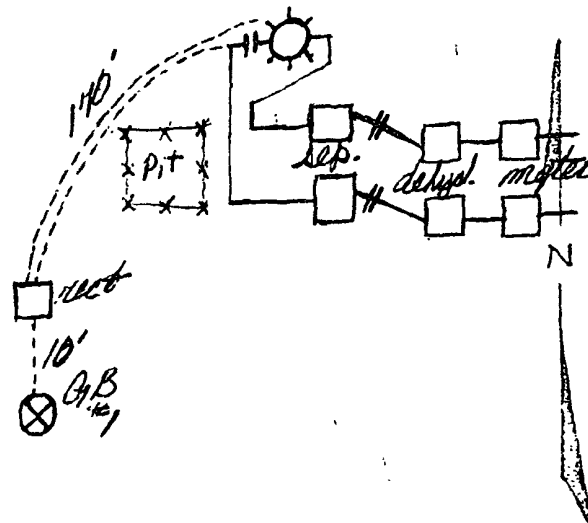
All Construction Completed

Calvin Rodman  
(Signature)

25' Meter Pole: 297.00  
20' Meter Pole: 1 @ 297.00 297.00  
10' Stub Pole: 225.00  
Junction Box: 1 @ 225.00 225.00

4949.00  
tot 2477.45  
5196.45 04 95

5881



D. Crass DRILLING CO.

Drill No. 3

S. P. No. McDermitt #1m Date 9-1-88  
Client Meridian Oil Co. Prospect \_\_\_\_\_  
County SAN JUAN State New Mex

[illegible]

Mud \_\_\_\_\_ Brom \_\_\_\_\_ Lime \_\_\_\_\_

Rock Bit Number \_\_\_\_\_ Make \_\_\_\_\_

Remarks: Water @ 160'

Driller Ronnie Brown

UNITED STATES  
DEPARTMENT OF THE INTERIOR  
BUREAU OF LAND MANAGEMENT

SUBMIT IN DUPLICATE\*

(See other in-  
structions on  
reverse side)

Form approved.  
Budget Bureau No. 1004-0137  
Expires August 31, 1985

WELL COMPLETION OR RECOMPLETION REPORT AND LOG\*

1a. TYPE OF WELL: ☐ OIL WELL ☒ GAS WELL ☐ DRY ☐ Other  
b. TYPE OF COMPLETION: ☒ NEW WELL ☐ WORK OVER ☐ DEEP EN ☐ PLUG BACK ☐ DIFF. EXHAUST ☐ Other

RECEIVED

JAN 06 1986

2. NAME OF OPERATOR  
El Paso Natural Gas Company

3. ADDRESS OF OPERATOR  
P. O. Box 4289, Farmington, NM 87499

4. LOCATION OF WELL (Report location clearly and in accordance with any State requirements)\*

At surface 1450'N, 1100'W

At top prod. interval reported below

At total depth

14. PERMIT NO. DATE ISSUED

12. COUNTY OR PARISH San Juan 13. STATE NM

15. DATE SPLODED 11-7-85 16. DATE T.D. REACHED 11-20-85 17. DATE COMPL. (Ready to prod.) 12-18-85 18. ELEVATIONS (DP, RNB, RT, GB, ETC)\* 5881' GL 19. ELEV. CASINGHEAD 5881'

20. TOTAL DEPTH, MD & TVD 6931' 21. PLUG BACK T.D., MD & TVD 6920' 22. IF MULTIPLE COMPL. HOW MANY\* Two 23. INTERVALS DRILLED BY Rotary 24. ROTARY TOOLS. Cable Tools No

24. PRODUCING INTERVAL(S), OF THIS COMPLETION—TOP, BOTTOM, NAME (MD AND TVD)\* 6774-6902' (Basin Dakota) 25. WAS DIRECTIONAL SURVEY MADE No

26. TYPE ELECTRIC AND OTHER LOGS RUN Correlation Gamma-Ray Log; Temp. Log; Ind. Log; Dual Ind. Log; Formation Density-Comp. NL; Temp S. 27. WAS WELL CORED No

29. CASING RECORD (Report all strings set in well)					
CASING SIZE	WEIGHT, LB/FT	DEPTH SET (MD)	HOLE SIZE	CEMENTING RECORD	AMOUNT PULLED
9 5/8"	32.3#	341'	12 1/4"	224 cu ft	
7"	23.0#	4150'	8 3/4"	1257 cu ft	

29. LINER RECORD					30. TUBING RECORD		
SIZE	TOP (MD)	BOTTOM (MD)	SACKS CEMENT*	SCREEN (MD)	SIZE	DEPTH SET (MD)	PACKER SET (MD)
4 1/2"	3982'	6928'	534 cu ft		2 3/8"	3972'	5025'
					1 1/2"	6899'	

31. PERFORATION RECORD (Interval, size and number) Pressure test to 4000 psi-ok. Perf'd (DK) 6774, 6776, 6778, 6780, 6782, 6784, 6786, 6788, 6790, 6792, 6794, 6796, 6798, 6849, 6852, 6855, 6858, 6871, 6874, 6877, 6880, 6893, 6896, 6899, 6902 w/1 SPZ. 2nd stage (MV Lower Pt) 4723, 4742, 4758, 4766, 4774-6902' 60,000# 40/60 sand & 83,890 gal. treated wtr 4723-4922' 72,000# 20/40 sand & 94,960 gal. slickwater

\* Continued Perf's listed on back pg. 1 PRODUCTION 4582-4702' 38,000# 20/40 sand & 87,330 gal. slickwater

DATE FIRST PRODUCTION 11-30-85 PRODUCTION METHOD (Flowing, gas lift, pumping—size and type of pump) Flowing WELL STATUS (Producing, shut-in) Shut in

DATE OF TEST 12-18-85 HOURS TESTED SI 7 Days CHOKE SIZE 3/4" PROD'Y FOR TEST PERIOD 0 OIL—BBL. 0 GAS—MCF 279 MCF/D WATER—BBL. 0 GAS-OIL RATIO 0

FLOW. TUBING PRESS. SI 1302 CASING PRESSURE SI -0- CALCULATED 24-HOUR RATE 0 OIL—BBL. 0 GAS—MCF. 1844 WATER—BBL. 0 OIL GRAVITY-API (CORR.) 0

34. DISPOSITION OF GAS (Sold, used for fuel, vented, etc) Shut in to be Sold TEST WITNESSED BY

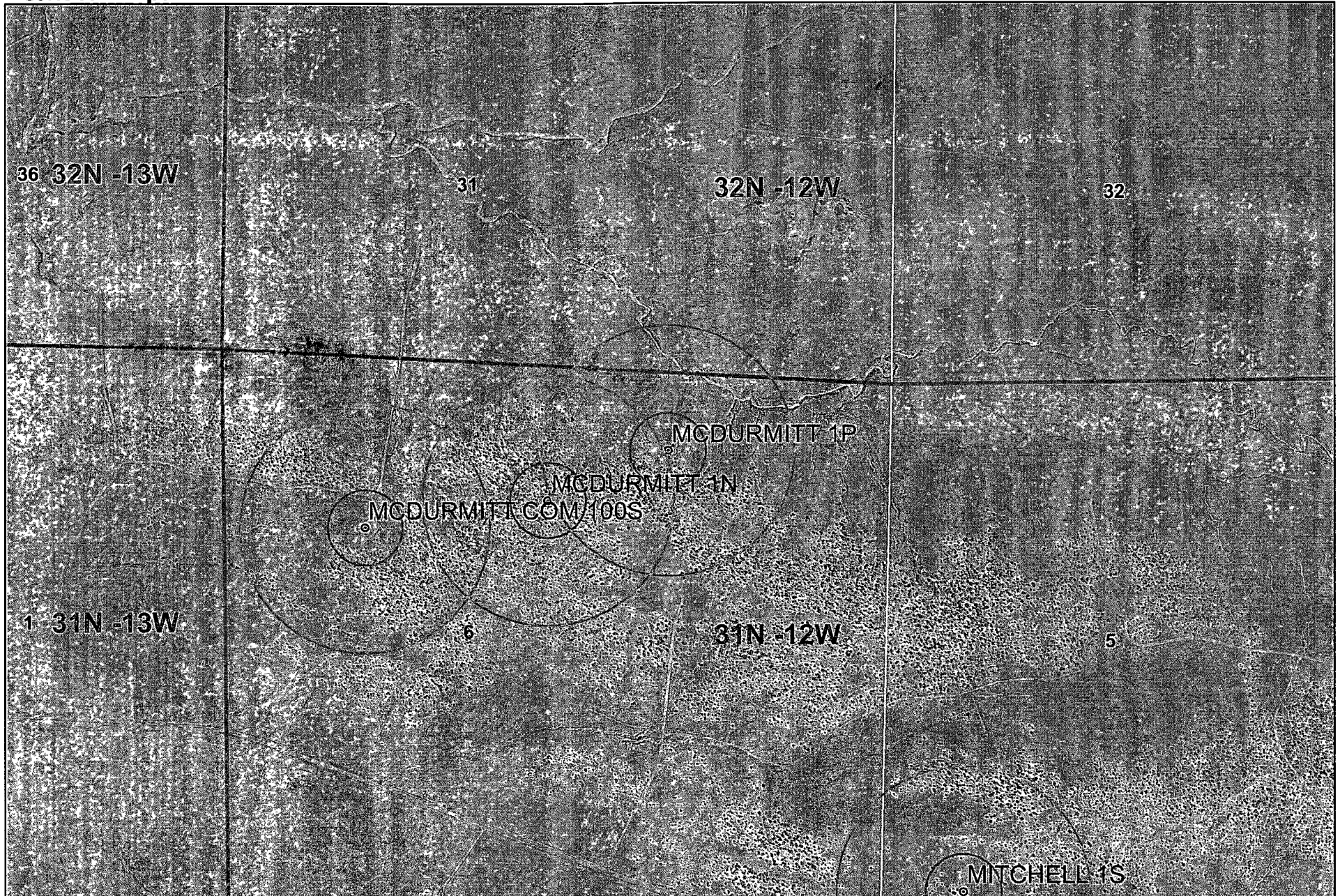
35. LIST OF ATTACHMENTS Temp Survey ACCEPTED FOR RECORD

36. I hereby certify that the foregoing and attached information is complete and correct as determined from all available data JAN 07 1986

SIGNED [Signature] TITLE Drilling Clerk FARMINGTON RESOURCE AREA 12-31-85

\*(See Instructions and Spaces for Additional Data on Reverse Side)





Data Source  
Aerial flown locally Sedgewick in 2005.  
Wetlands Data Acquired from U S Fish  
and Wildlife [Http://wetlandswms.er.usgs.gov](http://wetlandswms.er.usgs.gov)  
USGS Topo

300  
1000

Wetlands  
City Limits

0 270 540 1,080 1,620 2,160 Feet

1:12,000

NAD\_1983\_SP\_  
NM West\_FIPS\_  
3003  
Sep 23, 2008



# McDermitt 1P Mines, Mills and Quarries Web Map

## Mines, Mills & Quarries Commodity Groups

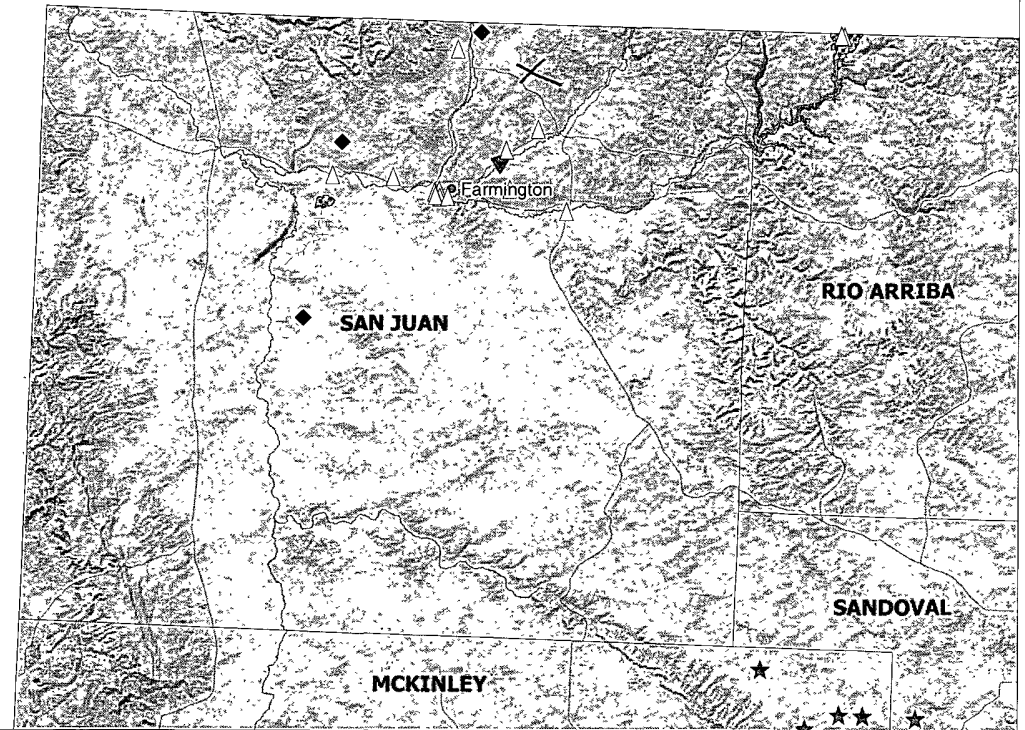
- △ Aggregate & Stone Mines
- ◆ Coal Mines
- ★ Industrial Minerals Mines
- ▼ Industrial Minerals Mills
- ▣ Metal Mines and Mill Concentrate
- Potash Mines & Refineries
- ⌘ Smelters & Refinery Ops.
- ✧ Uranium Mines
- ⊕ Uranium Mills

## Population

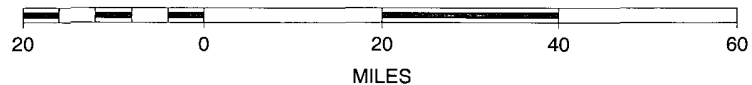
- Cities - major

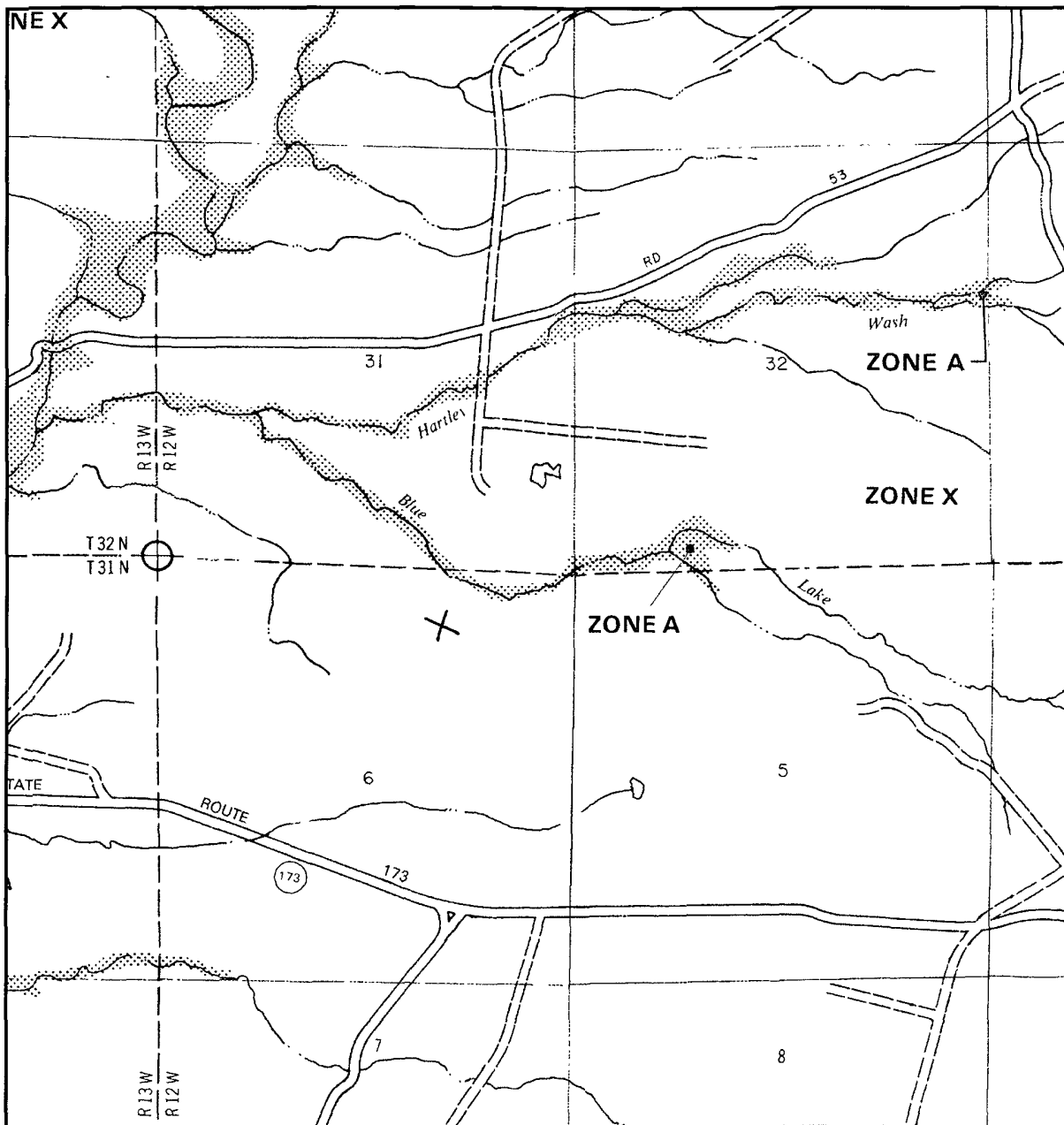
## Transportation

- +— Railways
- Interstate Highways
- - - Major Roads

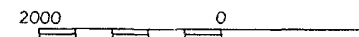


SCALE 1 : 1,329,482





APPROXIMATE SCALE



NATIONAL FLOOD INSURANCE PROGRAM

**FIRM**  
FLOOD INSURANCE RATE MAP

SAN JUAN COUNTY,  
NEW MEXICO  
UNINCORPORATED AREAS

PANEL 125 OF 1450  
(SEE MAP INDEX FOR PANELS NOT PRINTED)



PANEL LOCATION

COMMUNITY-PANEL NUMBER  
350064 0125 B

EFFECTIVE DATE:  
AUGUST 4, 1988



Federal Emergency Management Agency

This is an official copy of a portion of the above referenced flood map. It was extracted using F-MIT On-Line. This map does not reflect changes or amendments which may have been made subsequent to the date on the title block. For the latest product information about National Flood Insurance Program flood maps check the FEMA Flood Map Store at [www.msc.fema.gov](http://www.msc.fema.gov)

## ***Hydrogeological Report for McDermitt 1P***

### **Regional Geological context:**

The Nacimiento Formation is of Paleocene age (Baltz, 1967, p. 35). It crops out in a broad band inside the southern and western margins of the central basin and in a narrow band along the west face of the Nacimiento Uplift. The Nacimiento is a nonresistant unit and typically erodes to low, rounded hills or forms badland topography.

The Nacimiento Formation occurs in approximately only the southern two-thirds of the San Juan Basin where it conformably overlies and intertongues with the Ojo Alamo Sandstone (Fassett, 1974, p. 229). The Nacimiento Formation grades laterally into the main part of the Animas Formation (Fassett and Hinds, 1971, p. 34); thus, in this area, the two formations occupy the same stratigraphic interval.

Strata of the Nacimiento Formation were deposited in lakebeds in the central basin area with lesser deposition in stream channels (Brimhall, 1973, p. 201). In general, the Nacimiento consists of drab, interbedded black and gray shale with discontinuous, white, medium- to very coarse grained arkosic sandstone (Stone et al., 1983, p.30). Stone et al. indicated that the formation may contain more sandstone than commonly reported because some investigators assume the slope-forming strata in the unit area shales, whereas in many places the strata actually are poorly consolidated sandstones. Total thickness of the Nacimiento Formation ranges from about 500 to 1,300 feet. The unit generally thickens from the basin margins toward the basin center (Steven et al., 1974). The sandstone deposits within the Nacimiento Formation are much thinner than the total thickness of the formation because their environment of deposition was localized stream channels (Brimhall, 1973, p. 201). The thickness of the combined San Jose, Animas, and Nacimiento Formations ranges from 500 to more than 3,500 feet.

### **Hydraulic Properties:**

**Reported well yields for** 53 wells completed in either the Animas or Nacimiento Formations range from 2 to 90 gallons per minute and the median yield is 7.5 gallons per minute. The primary use of water from Nacimiento and Animas Formations is domestic and livestock supplies. There are no known aquifer tests for the Animas or Nacimiento Formations, but specific capacities reported for six wells range from 0.24 to 2.30 gallons per minute per foot of drawdown (Levings et al., 1990).

The Animas and Nacimiento Formations are in many ways hydrologically similar to the San Jose Formation because sands in both units produce approximately the same quantities of water. However, the greater percentage of fine materials in the Animas and Nacimiento Formations may restrict downward vertical leakage to the Ojo Alamo Sandstone or Kirtland Shale. The poorly cemented fine material is highly erodible, forms a badland terrain, and supports only spotty vegetation. These conditions are more conducive to runoff than retention of precipitation.

### **References:**

Baltz, E.H., 1967, Stratigraphy and regional tectonic implications of part of Upper Cretaceous rocks, east-central San Juan Basin, New Mexico: USGS Professional Paper

552, 101 p.

Brimhall, R.M., 1973, Ground-water hydrology of Tertiary rocks of the San Juan Basin, New Mexico, in Fassett, J.E., ed., Cretaceous and Tertiary rocks of the Southern Colorado Plateau: Four Corners Geological Society Memoir, p. 197-207.

Fassett, J.E., 1974, Cretaceous and Tertiary rocks of the eastern San Juan Basin, New Mexico and Colorado, in Guidebook of Ghost Ranch, central-northern New Mexico: New Mexico Geological Society, 25th Field Conference, p. 225-230.

Fassett, J.E., and Hinds, J.S., 1971, Geology and fuel resources of the Fruitland Formation and Kirtland Shale of the San Juan Basin, New Mexico and Colorado: USGS Professional Paper 676, 76 p.

Levings, G.W., Craig, S.d., Dam, W.L., Kernodle, J.M., and Thorn, C.R., 1990, Hydrogeology of the San Jose, Nacimiento, and Animas Formations in the San Juan structural basin, New Mexico, Colorado, Arizona, and Utah: USGS Hydrologic Investigations Atlas HA-720-A, 2 sheets.

Stone, W.J., Lyford, F.P., Frenzel, P.F., Mizell, N.H., and Padgett, E.T., 1983, Hydrogeology and water resources of San Juan Basin, New Mexico: New Mexico Bureau of Mines and Mineral Resources, Hydrologic Report 6.

### **Siting Criteria Compliance Demonstration & Hydro Geologic Analysis**

The McDurmitt 1P is not located in an unstable area. The location is not over a mine and is not on the side of a hill as indicated on the Mines, Mills and Quarries Map and Topographic Map. The location of the excavated pit material will not be located within 300' of any continuously flowing watercourse or 200' from any other watercourse as indicated on the Topographic Map. The location is not within a 100-year floodplain area as indicated on the FEMA Map. The Cathodic well data from the McDurmitt 1M has an elevation of 5881' and groundwater depth of 160'. The subject well has an elevation of 5878' which is slightly less than the McDurmitt 1M, therefore the groundwater depth is greater than 100'. There are no iWATERS data points located in the area as indicated on the TOPO Map. The Cathodic data provided the indication of groundwater depth is greater than 100'. The hydro geologic analysis indicates the groundwater depth and the Nacimiento formation will create a stable area for this new location.



ConocoPhillips Company  
GRFS / PTRRC – San Juan Business Unit  
Juanita Farrell  
3401 East 30<sup>th</sup> Street  
Farmington, NM 87402  
Telephone: (505) 326-9597  
Facsimile: (505) 324-6136

July 29, 2008

**VIA CERTIFIED MAIL – RETURN RECEIPT REQUESTED**  
**71106605959000260272**

Montoya Sheep & Cattle Company  
Attn: Stella Montoya  
1592 Highway 170  
La Plata, NM 87418

Subject: Culpepper Martin 104S  
SE Section 20, T32N, R12W  
San Juan County, New Mexico

McDermitt 1P  
NE Section 6, T31N, R12W  
San Juan County, New Mexico

McDermitt 1N  
NW Section 6, T31N, R12W  
San Juan County, New Mexico

Dear Landowner:

Pursuant to Paragraph 1 (b) of Subsection F of 19.15.17.13 NMAC, an operator shall provide the surface owner of the operator's proposal to close a temporary pit on-site in compliance with the on-site closure methods specified in the same Subsection of the NMAC. In compliance of this requirement, please consider this notification of ConocoPhillips' intent to close the temporary pit on the above referenced locations.

If you have any questions, please contact Joni Clark @ (505)326-9701.

Sincerely,

*Juanita Farrell*

Juanita Farrell  
Staff Associate, PTRRC

DISTRICT I  
1625 N. French Dr., Hobbs, N.M. 88240

DISTRICT II  
1301 West Grand Avenue, Artesia, N.M. 88210

DISTRICT III  
1600 Rio Brazos Rd., Aztec, N.M. 87410

DISTRICT IV  
1320 S. St. Francis Dr., Santa Fe, NM 87606

State of New Mexico  
Energy, Minerals & Natural Resources Department

OIL CONSERVATION DIVISION  
1220 South St. Francis Dr.  
Santa Fe, NM 87505

Form C-102  
Revised October 12, 2005

Submit to Appropriate District Office  
State Lease - 4 Copies  
Fee Lease - 3 Copies

☐ AMENDED REPORT

WELL LOCATION AND ACREAGE DEDICATION PLAT

<sup>1</sup> API Number 30-045-	<sup>2</sup> Pool Code 72319/71599	<sup>3</sup> Pool Name BASIN DAKOTA/ BLANCO MESAVERDE
<sup>4</sup> Property Code 7306	<sup>5</sup> Property Name MCDURMITT	<sup>6</sup> Well Number 1P
<sup>7</sup> ORD No. 14538	<sup>8</sup> Operator Name BURLINGTON RESOURCES OIL AND GAS COMPANY LP	<sup>9</sup> Elevation 5878'

<sup>10</sup> Surface Location

UL or lot no.	Section	Township	Range	Lot Idn	Feet from the	North/South line	Feet from the	East/West line	County
B	6	31-N	12-W		670'	NORTH	1740'	EAST	SAN JUAN

<sup>11</sup> Bottom Hole Location If Different From Surface

UL or lot no.	Section	Township	Range	Lot Idn	Feet from the	North/South line	Feet from the	East/West line	County
B									
<sup>12</sup> Dedicated Acres 312.76 / 312.76 N/2		<sup>13</sup> Joint or Infill		<sup>14</sup> Consolidation Code		<sup>15</sup> Order No.			

NO ALLOWABLE WILL BE ASSIGNED TO THIS COMPLETION UNTIL ALL INTERESTS HAVE BEEN CONSOLIDATED  
OR A NON-STANDARD UNIT HAS BEEN APPROVED BY THE DIVISION

LOT 4	LOT 3	FEE	LOT 1
LOT 5		USA NM-019413	LOT 2
LOT 6	LAT: 36°56.0047' N. LONG: 108°07.9845' W. NAD 1927 LAT: 36.933414° N. LONG: 108.133705° W. NAD 1983		
LOT 7			

<sup>17</sup> OPERATOR CERTIFICATION

I hereby certify that the information contained herein is true and complete to the best of my knowledge and belief, and that this organization either owns a working interest or unleased mineral interest in the land including the proposed bottom hole location or has a right to drill this well at this location pursuant to a contract with an owner of such a mineral or a working interest, or to a voluntary pooling agreement or a compulsory pooling order heretofore entered by the division.

*Jamie Goodwin*  
Signature  
Jamie Goodwin  
Printed Name

<sup>18</sup> SURVEYOR CERTIFICATION

I hereby certify that the well location shown on this plat was plotted from field notes of actual surveys made by me or under my supervision, and that the same is true and correct to the best of my belief.

9-13-07  
Date of Survey  
Signature of Surveyor  
GLEN W. RUSSELL  
NEW MEXICO  
15703  
LICENSED PROFESSIONAL SURVEYOR  
Certificate Number 15703

# **Burlington Resources Oil & Gas Company, LP**

## **San Juan Basin**

### **Closure Plan**

In accordance with Rule 19.15.17.12 NMAC the following information describes the closure requirements of temporary pits on Burlington Resources Oil & Gas Company, LP (BR) locations. This is BR's standard procedure for all temporary pits. A separate plan will be submitted for any temporary pit which does not conform to this plan.

All closure activities will include proper documentation and be available for review upon request and will be submitted to OCD within 60 days of closure of pit closure. Closure report will be filed on C-144 and incorporate the following:

- Details on Capping and Covering, where applicable.
- Plot Plan (Pit Diagram)
- Inspection Reports
- Sampling Results
- C-105
- Copy of Deed Notice will be filed with County Clerk

#### **General Plan:**

1. All free standing liquids will be removed at the start of the pit closure process from the pit and disposed of in a division-approved facility or recycle, reuse or reclaim the liquids in a manner that the appropriate division district office approves. The facilities to be used will be Basin Disposal (Permit #NM-01-005) and Envirotech Land Farm (Permit #NM-01-011).
2. The preferred method of closure for all temporary pits will be on-site burial, assuming that all the criteria listed in sub-section (B) of 19.15.17.13 are met.
3. The surface owner shall be notified of BR's closing of the temporary pit prior to closure as per the approved closure plan via certified mail, return receipt requested.
4. Within 6 months of the Rig Off status occurring BR will ensure that temporary pits are closed, re-contoured, and reseeded.
5. Notice of Closure will be given prior to closure to the Aztec Division office between 72 hours and one week via email, or verbally. The notification of closure will include the following:
  - i. Operator's name
  - ii. Location by Unit Letter, Section, Township, and Range. Well name and API number.
6. Liner of temporary pit shall be removed above "mud level" after stabilization. Removal of liner will consist of manually or mechanically cutting liner at mud level and removing all remaining liner. Care will be taken to remove "All" of the liner i.e., edges of liner entrenched or buried. All excessive liner will be disposed of at the San Juan County Landfill located on CR 3100.
7. Pit contents shall be mixed with non-waste containing, earthen material in order to achieve the solidification process. The solidification process will be accomplished using a combination of natural drying and mechanically mixing. Pit contents will be mixed with non-waste, earthen material to a consistency that is deemed a safe and stable. The mixing ratio shall not exceed 3 parts clean soil to 1 part pit contents.
8. A five point composite sample will be taken of the pit using sampling tools and all samples tested per Subsection B of 19.15.17.13(B)(1)(b). In the event that the criteria are not met, all contents will be handled per Subparagraph (a) of Paragraph (1) of Subsection B of 19.15.17.13 i.e., Dig and haul.

Components	Tests Method	Limit (mg/Kg)
Benzene	EPA SW-846 8021B or 8260B	0.2
BTEX	EPA SW-846 8021B or 8260B	50
TPH	EPA SW-846 418.1	2500
GRO/DRO	EPA SW-846 8015M	500
Chlorides	EPA 300.1	1000/500



9. Upon completion of solidification and testing standards being passed, the pit area will be backfilled with compacted, non-waste containing, earthen material. A minimum of four feet of cover shall be achieved and the cover shall include one foot of suitable material to establish vegetation at the site, or the background thickness of topsoil, whichever is greater. If standard testing fails BR will dig and haul all contents pursuant to 19.15.17.13.i.a. After doing such, confirmation sampling will be conducted to ensure a release has not occurred.
10. During the stabilization process if the liner is ripped by equipment the Aztec OCD office will be notified within 48 hours and the liner will be repaired if possible. If the liner can not be repaired then all contents will be excavated and removed.
11. Dig and Haul Material will be transported to the Envirotech Land Farm located 16 miles south of Bloomfield on Angel Peak Road, CR 7175. Permit # NM010011
12. Re-contouring of location will match fit, shape, line, form and texture of the surrounding. Re-shaping will include drainage control, prevent ponding, and prevent erosion. Natural drainages will be unimpeded and water bars and/or silt traps will be place in areas where needed to prevent erosion on a large scale. Final re-contour shall have a uniform appearance with smooth surface, fitting the natural landscape.
13. Notification will be sent to OCD when the reclaimed area is seeded.
14. BR shall seed the disturbed areas the first growing season after the operator closes the pit. Seeding will be accomplished via drilling on the contour whenever practical or by other division-approved methods. BLM stipulated seed mixes will used on federal lands. Vegetative cover will equal 70% of the native perennial vegetative cover (un-impacted) consisting of at least three native plant species, including at least one grass, but not including noxious weeds, and maintain that cover through two successive growing seasons. Repeat seeding or planting will be continued until successful vegetative growth occurs.

Type	Variety or Cultivator	PLS/A
Western wheatgrass	Arriba	3.0
Indian ricegrass	Paloma or Rimrock	3.0
Slender wheatgrass	San Luis	2.0
Crested wheatgrass	Hy-crest	3.0
Bottlebrush Squirreltail	Unknown	2.0
Four-wing Saltbrush	Delar	.25

**Species shall be planted in pounds of pure live seed per acre:**

**Present Pure Live Seed (PLS) = Purity X Germination/100**

**Two lots of seed can be compared on the basis of PLS as follows:**

Source No. One (poor quality)

Purity 50 percent

Germination 40 percent

Percent PLS 20 percent

**5 lb. bulk seed required to make**

**1 lb. PLS**

Source No. two (better quality)

Purity 80 percent

Germination 63 percent

Percent PLS 50 percent

**2 lb. bulk seed required to make**

**1 lb. PLS**

15. The temporary pit will be located with a steel marker, no less than four inches in diameter, cemented in a hole three feet deep in the center of the onsite burial upon the abandonment of all the wells on the pad. The marker will be flush with the ground to allow access of the active well pad and for safety concerns. The marker will include a threaded collar to be used for future abandonment. The top of the marker will contain a welded steel 12" square plate that indicates the onsite burial of the temporary pit. The plate will be easily removable and a four foot tall riser will be threaded into the top of the collar marker and welded around the base with the operator's information at the time of all wells on the pad are abandoned. The operator's information will include the following: Operator Name, Lease Name, Well Name and number, Unit Number, Section, Township, Range and an indicator that the marker is an onsite burial location.