

**UNITED STATES
DEPARTMENT OF THE INTERIOR
BUREAU OF LAND MANAGEMENT**

SEP 30 2008

Sundry Notices and Reports on Wells

Bureau of Land Management
Farmington Field Office

1. Type of Well
GAS

2. Name of Operator
CONOCOPHILLIPS COMPANY

3. Address & Phone No. of Operator

PO Box 4289, Farmington, NM 87499 (505) 326-9700

4. Location of Well, Footage, Sec., T, R, M

Unit L (NWSW), 1600' FSL & 860' FWL, Section 4, T25N, R04W, NMPM

5. Lease Number
Jicarilla contract 122
6. If Indian, All. or Tribe Name
Jicarilla Apache Tribe
7. Unit Agreement Name

8. Well Name & Number
AXI Apache O 12

9. API Well No.

30-039-21431

10. Field and Pool
S. Blanco Pictured Cliffs

11. County and State
Rio Arriba Co., NM

12. CHECK APPROPRIATE BOX TO INDICATE NATURE OF NOTICE, REPORT, OTHER DATA

Type of Submission

☐ Notice of Intent

☒ Subsequent Report

☐ Final Abandonment

Type of Action

☐ Abandonment

☐ Recompletion

☐ Plugging

☐ Casing Repair

☐ Altering Casing

☐ Change of Plans

☐ New Construction

☐ Non-Routine Fracturing

☐ Water Shut off

☐ Conversion to Injection

☒ Other - 300 PSI Chemical Squeeze

13. Describe Proposed or Completed Operations

See attached for detail of squeeze

14. I hereby certify that the foregoing is true and correct.

Signed Tracey N. Monroe Tracey N. Monroe Title Staff Regulatory Technician Date 9/29/2008
ACCEPTED FOR RECORD

(This space for Federal or State Office use)

APPROVED BY _____ Title _____

CONDITION OF APPROVAL, if any:

Title 18 U.S.C. Section 1001, makes it a crime for any person knowingly and willfully to make any department or agency of the United States any false, fictitious or fraudulent statements or representations as to any matter within its jurisdiction

OCT 29 2008
Date
FARMINGTON FIELD OFFICE
BY [Signature]

CONDUCT MIT ON OR BEFORE 9/23/2009 - NOTIFY NMOCD 24 HRS PRIOR TO TESTING.
KR

NMOCD

9/11/08 MIRU Key 940. ND WH. NU BOP.

9/12/08 Tally 1 1/4" drill pipe. PU & RIH w/bit, tag bridge @ 2305'. RU power swivel. Unload hole w/air. D/O bridge from 2305' to 2400'. Circ clean. RD swivel. PU pipe. RIH to 3000'.

9/15/08 PU pipe & RIH. Tag up @ 3100'. RU swivel. C/O from 3100' - 3344'. Lost circ. PU hole, try to get circ back.

9/16/08 Circ & unload hole. PU tbg w/swivel. RIH C/O & circ. C/O to PBTD. PU hole.

9/17/08 RIH. Circ hole clean. POOH LD bit. Make up bridge plug, PIH to 3335'. Set plug. Load hole w/2% KCL. PT csg- no test. POOH. LD retrieving tool.

9/18/08 Make up packer on 1 1/4" drill pipe. RIH to 3300'. Set Packer above BP. PT to 500# - held. Start out of hole, POOH w/packer, repair packer.

9/19/08 Make Up packer & RIH. Isolate casing leak 1609-1640'. POOH LD packer

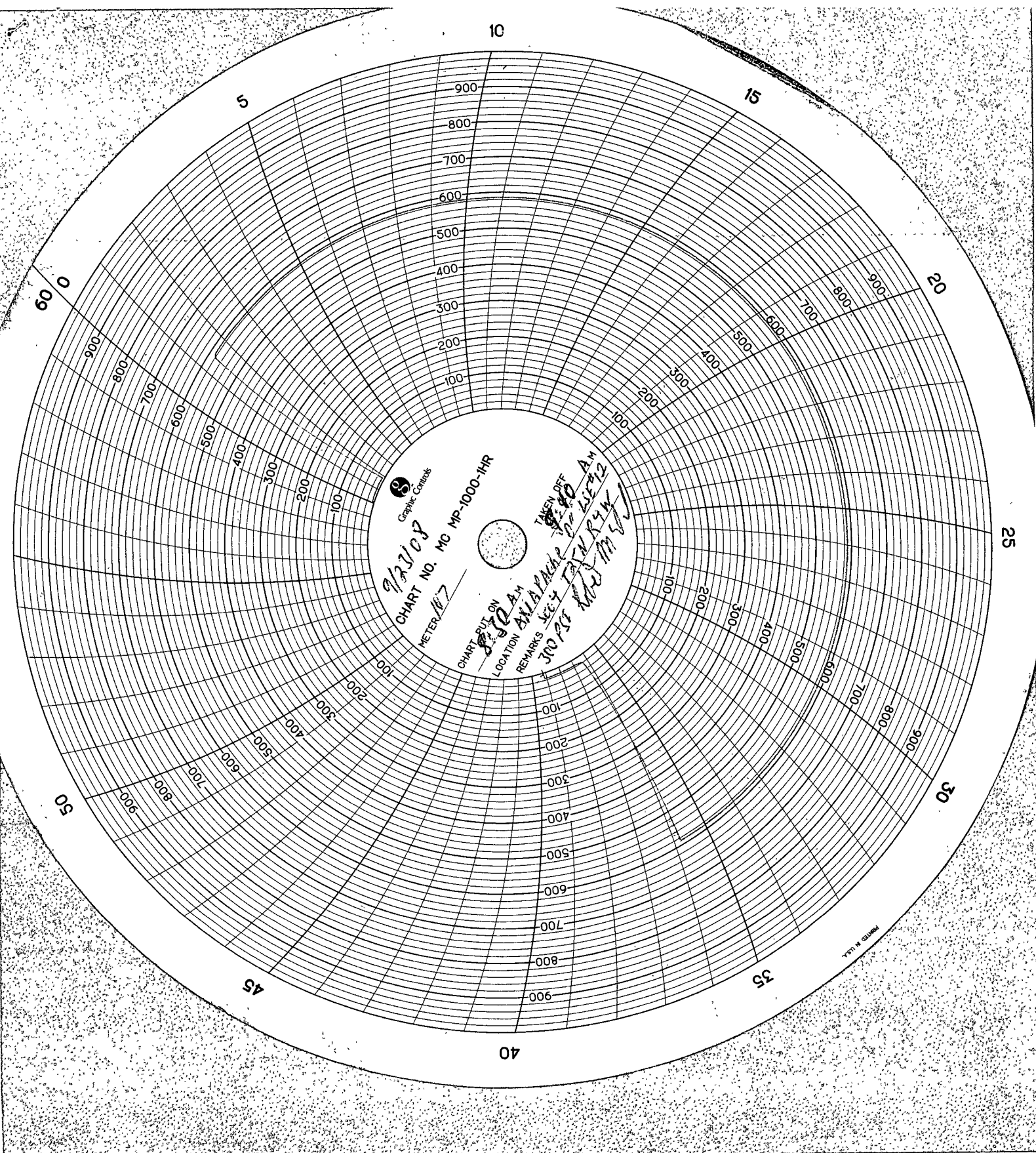
9/19/08 Jim Lovato (BLM) and Kelly Roberts (OCD) were notified of casing leak between 1609' & 1640'. The rig was unable to establish an injection rate into the casing leak. Pressure dropped from 500# to 0# in 5 minutes. We are requesting to squeeze with 300 PSI. Verbal approval by Jim Lovato on 9/19/08 and Charlie Perrin (OCD) on 9/22/08. OCD has requested that an MIT be run in 12 months. NOI submitted 9/24/08.

9/19/08 RIH to 1640'. RU 300 PSI. Pump 300 PSI Chemical. 9.5 bbls 300 PSI CRS Chemical was squeezed into interval. 3.5 bbls squeezed away through hole. Achieving 900 psi holding strength. POOH. Pressure up on csg w/nitrogen, left pressure on well.

9/23/08 RU chart recorder. Chart csg test, 500# 30/min. MU retrieving head. RIH to 1640'. Circ out excess chemical. Unload hole w/Air. RIH to 3330'. Unload hole. Latch on to bridge plug, work free. POOH w/BP. LD plug. RIH to 2800'.

9/24/08 Unload hole w/air. RIH to PBTD. Unload hole. Circ with air/mist. Unload water from hole. PU hole.

9/25/08 Unload hole. Blow well around. POOH LD 1 1/4" drill pipe. ND BOP. NU WH. RD rig & equipment



9/23/08
CHART NO. MC MP-1000-1HR
METER 107
CHART RUN ON 8:50 A.M.
LOCATION ANAPAHUA, P.R. 14-43
REMARKS 300 PSI 1000 M VV
TAKEN OFF 9:00 A.M.

GRAPHIC CONTROLS

PRINTED IN U.S.A.