

UNITED STATES
DEPARTMENT OF INTERIOR
BUREAU OF LAND MANAGEMENT

RECEIVED

NOV 10 2008

FORM APPROVED
Budget Bureau No. 1004-0135

SUNDRY NOTICE AND REPORTS ON WELLS

Do not use this form for proposals to drill or to deepen or reentry to a different reservoir. Use "APPLICATION TO DRILL" for permit for such proposals.

Bureau of Land Management
Planning and Conservation

Lease Designation and Serial No.
SF-078763

6. If Indian, Allottee or Tribe Name

7. If Unit or CA, Agreement Designation
ROSA UNIT

8. Well Name and No.
ROSA UNIT #335

9. API Well No.
30-039-25027

10. Field and Pool, or Exploratory Area
BASIN FRUITLAND COAL

11. County or Parish, State
RIO ARRIBA, NM

SUBMIT IN TRIPLICATE

1. Type of Well
Oil Well ☒ Gas Well ☐ Other ☐

2. Name of Operator
WILLIAMS PRODUCTION COMPANY

3. Address and Telephone No.
PO BOX 3102 MS 25-4, TULSA, OK 74101 (918) 573-3046

4. Location of Well (Footage, Sec., T., R., M., or Survey Description)
2005' FSL, 950' FWL, NW/4 SW/4, SEC 05, T31N, R05W

CHECK APPROPRIATE BOX(S) TO INDICATE NATURE OF NOTICE, REPORT, OR OTHER DATA

TYPE OF SUBMISSION

TYPE OF ACTION

Notice of Intent

☒ Subsequent Report

Final Abandonment

Abandonment

Recompletion

Plugging Back

Casing Repair

Altering Casing

☒ Other REPAIR PARTED RODS & PUMP

Change of Plans

New Construction

Non-Routine Fracturing

Water Shut-Off

Conversion to Injection

Dispose Water

(Note: Report results of multiple completion on Well Completion or Recompletion Report and Log form.)

13. Describe Proposed or Completed Operations (Clearly state all pertinent details, and give pertinent dates, including estimated date of starting any proposed work. If well is directionally drilled, give subsurface locations and measured and true vertical depths for all markers and zones pertinent to this work.)*

10-28-2008

Set up w/ rig mast. NU w/ circ pump and flowback tank. Nippling down w/ pump jack - horse head twisted from rods parting. Unable to remove or swivel horse head. Called out Vaughn roustabouts, they were unable to remove or swivel horse head. Vaughn got orders from Farmington to slide pumping unit back on its pad. Worked on pump unit, slid pump jack back on pad. Press test tbq - solid @ 750 psi, TOH w/ rods -- broken worn 3/4" box 67 sgls down. AWS does not carry rod fishing tools on their rigs. Unable to fish rods, Csg = 400# - bled to FB tank. ND w/ prod head, NU w/ BOP & work platform. Function test BOP, AWS may have fishing tools in the morning, SDFN.

RCVD NOV 21 '08
OIL CONS. DIV.

DIST. 3

Continued on attached sheets:

14. I hereby certify that the foregoing is true and correct

Signed

Rachel Lippard
Rachel Lippard

Title Engineering Technician II

Date November 6, 2008

(This space for Federal or State office use)

Approved by

Title

Date

NOV 20 2008

Conditions of approval, if any:

FARMINGTON FIELD OFFICE

Title 18 U.S.C. Section 1001, makes it a crime for any person knowingly and willfully to make to any department or agency of the United States any false, fictitious or fraudulent statements or representations as to any matter within its jurisdiction.

NMOC

10-29-2008

Csg = 150# - bled to FB tank. Unable to loc fishing tools for 3/4" rods. Rig to pull tbg. TOH w/ PS tbg wet - junked 1/4" SS chem capillary tube strapped to top 500' PS tbg -- meas & visually inspected tbg. Pulled tbg to broken rods. Ordered out trailer to lay rods down on, trailer arrived. TOH w pump & rods - laid down in singles. TIH w/ rod hung in derrick. TOH w/ rods - laid down in sgls. Sent rods & pump to Energy pump for inspection. Comp TOH w/ PS tbg - meas tbg. Rec 99 jts 23/8" tbg w/ mud anchor -- tubing was landed overall @ 3130.64'. Made up 43/4" bit - 2' pup jt - 1.78" F-Nipple w/ retrievable standing valve seated in place - wet tested in hole w/ PS tbg at 1800 psi -- located 1 split jt & collar & pin leak. Replaced 2 jts tbg -- jts 69 & 74, made up Little Red overshot & TIH w/ same on 9/16" sandline. Fished retrievable standing valve, TDH w/ tbg - tagged fill at 3125' = 13' fill, hung tbg off at 3100', SDFN.

10-30-2008

Csg = 400 psi - BD to FB tank. NU w/ PS, TDH w/ tbg - tag fill at 3125'. NU w/ air pack broke circ w/ 10 bph A/S/CI in 20 min at 600 psi. Disp 45 bbls form wtr w/ air. Circ and rotated from 3125' to 3131'. Rec coal fines and coffee ground size coal. Unable to get below 3131' -- new PBTD @ 3131'. Circ wellbore clean and made soap sweeps. Rec some coffee ground size coal and coal fines. Rec a total of 145 bbls form water during clean out. ND w/ air pack and power swivel, TOH w/ prod string tbg. Broke down and loaded out w/ bit, SDFN.

10-31-2008

BD to FB tank, made up gas anchor w/ 1.78" f-nipple and TIH w/ same on 2 3/8" PS tbg. Strapped 1/4" SS chem capillary tube to outside top 8 jts PS tbg = 250'. Land tbg w/ f-nipple set @ 3104 & OA @ 3131', ND w/ Specialty Banding equip. ND w/ work platform & BOP, NU w/ chem adap companion flange and prod head. NU w/ air pack - pump ahead w/ 4 bbls form wtr. Pump off check at 500#, circ w/ air & rec load wtr. ND w/ air pack, Rig for rods. Move in & spot new rod string. TIH w/ new pump & rods - picked rods up in singles. Spaced out pump, filled tbg w/ wtr & press test at 750 # w./ circ pump - solid. Stroke pump to 750# w/ pulling unit - good pump action. NU w/ pump jack & hung on ready for prod. Load out w/ rig tools, LD with rig mast and cleaned loc. ND w/ FB tank and circ pump, made ready to move out w/ rig and equip.

RCVD NOV 21 '08

OIL CONS. DIV.

ROSA UNIT #335
FRUITLAND COAL

DIST. 3

Location:

2005' FSL and 950' FWL
NW/4 SW/4 Sec 5L, T31N R5W
Rio Arriba, New Mexico
Elevation: 6342' GR

API #: 30-039-25027

Pumping Unit
Salzgitter 235 (74" stroke)

Spud: 11/30/90

Completed: 12/08/90

1st Delivery: 12/5/91

Cavitated: 08/03/01

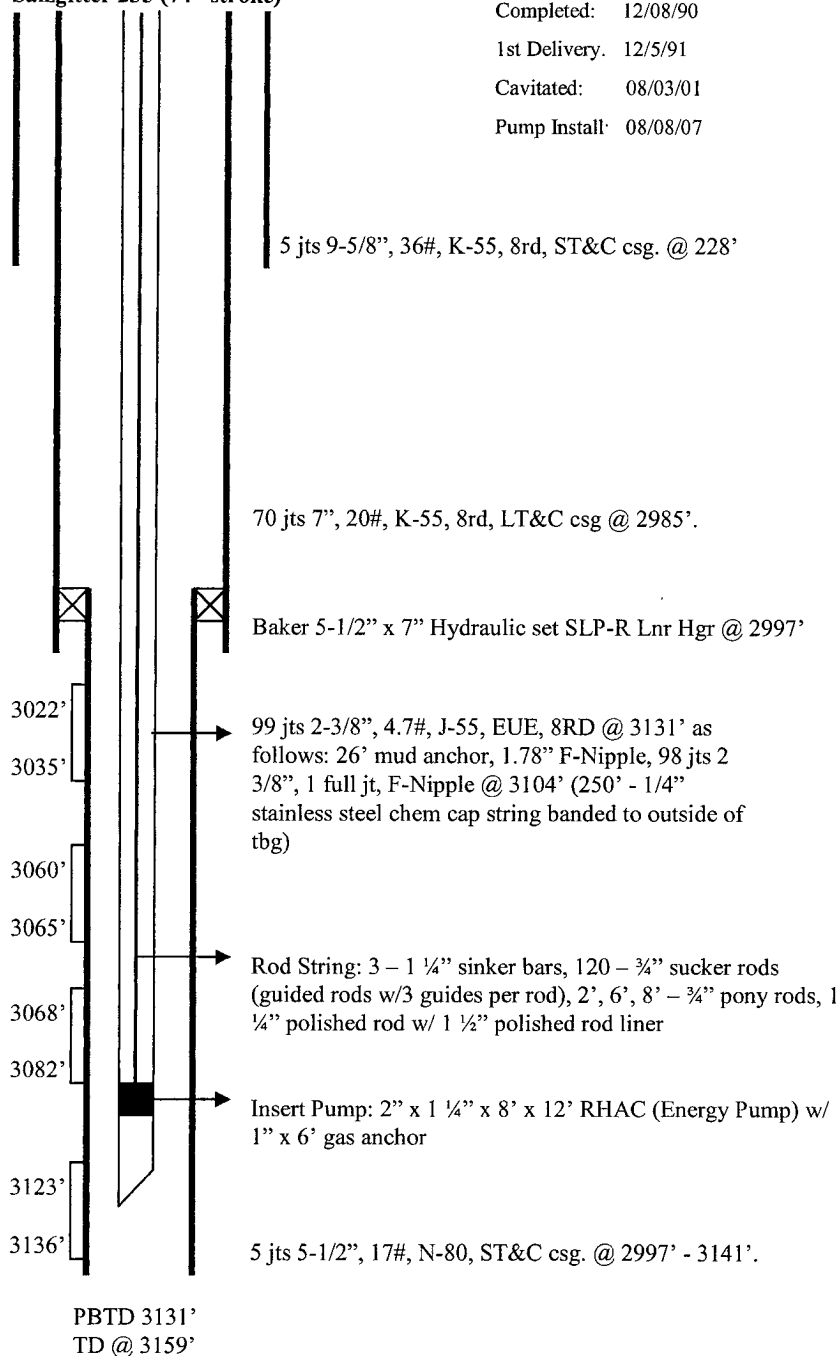
Pump Install: 08/08/07

Top	Depth
Ojo Alamo	2834'
Kirtland	3014'
Fruitland	3314'
Pictured Cliffs	3554'

Perforations:

4 SPF @ 0.66 EHD

180 total holes



Underream 6 1/4" to 9 1/2" from
2991' to 3159'

Hole Size	Casing	Cement	Volume	Top Of CMT
12-1/4"	9-5/8", 36#	160 sx	189 cu. ft.	surface
8-3/4"	7", 20#	630 sx	1056 cu. ft.	surface
9-1/2"	5-1/2", 17#	n/a	n/a	n/a