

Submit 3 Copies
To Appropriate
District Office
DISTRICT I
P.O. Box 1980, Hobbs, NM 88240

State of New Mexico
Energy, Minerals and Natural Resources Department
OIL CONSERVATION DIVISION
2040 South Pacheco
Santa Fe, NM 87505

Form C-103
Revised 1-1-89

DISTRICT II
811 South First, Artesia NM 88210

DISTRICT III
1000 Rio Brazos Rd., Aztec, NM 87410

WELL API NO.

30-039-26630

5. Indicate Type of Lease
STATE ☒ FEE ☐

6. State Oil & Gas Lease No.
E-347

7. Lease Name or Unit Agreement
Name:

ROSA UNIT

8. Well No.

#24B

9. Pool name or Wildcat

BLANCO MV/BASIN DK

SUNDRY NOTICES AND REPORTS ON WELLS

(DO NOT USE THIS FORM FOR PROPOSALS TO DRILL OR TO DEEPEN OR PLUG BACK TO A
DIFFERENT RESERVOIR. USE "APPLICATION FOR PERMIT" (FORM C-101) FOR SUCH
PROPOSALS

1. Type of Well:
Oil Well ☐ Gas Well ☒ Other

2. Name of Operator

WILLIAMS PRODUCTION COMPANY

3. Address of Operator

P O BOX 3102, MS 25-4, TULSA, OK 74101

4. Well Location (Surface)

Unit letter N : 860 feet from the SOUTH line & 1965 feet from the WEST line Sec 32-31N-R05W RIO ARRIBA, NM

10. Elevation (Show whether DF, RKB, RT, GR, etc.

6518' GR

Check Appropriate Box to Indicate Nature of Notice, Report or Other Data

NOTICE OF INTENTION TO:

SUBSEQUENT REPORT OF:

PERFORM REMEDIAL
WORK

PLUG AND ABANDON

REMEDIAL WORK

ALTERING CASING

TEMPORARILY ABANDON

CHANGE PLANS

COMMENCE DRILLING OPNS.

PLUG AND
ABANDONMENT

PULL OR ALTER CASING

CASING TEST AND CEMENT JOB

OTHER:

X OTHER: C/O & REPAIR

12. Describe proposed or completed operations. (Clearly state all pertinent details, and give pertinent dates, including estimated date of starting any proposed work). Data below to satisfy NM OCD Rule 303.C.3 (b) (i)-(vii)

RCVD DEC 8 '08
OIL CONS. DIV.
DIST. 3

11-21-2008

Ready rig and equipment for rig move. --- SM w/ rig crew & Triple S Trucking, Load out equipment and move from Rosa 153C to Rosa 24B, Set rig ramp, spot rig on ramp, set in and spot surface equipment and air package, raise derrick and secure rig, RU surface equipment. Secure well & freeze protect equipment, SD until Monday 11/24/2008. No accidents reported.

Continued on attached sheets:

I hereby certify that the information above is true and complete to the best of my knowledge and belief.

SIGNATURE Rachel Lipperd TITLE: Engineering Technician II DATE: December 4, 2008

Type or print name Rachel Lipperd

Telephone No: (918) 573-3046

(This space for State use) APPROVED

BY Terrell G. Rios TITLE Deputy Oil & Gas Inspector,

Conditions of approval, if any:

District #3

DEC 09 2008
DATE

11-24-2008

DK SITP 600 psi, MV SICP 300psi, blow well down to flowback tank, Set BPV in DK tbg, ND Dual WH, NU BOPE & off set spool, --- Sting into MV prod tbg, un-land MV side, pull 1 stand of tbg & standback (tbg pulling hard). Attempt to pull 2nd stand of tbg and was stuck, PU stand of tbg and run back in well, unable to go up or down more than a few feet, pumped 10 bbls 2% KCL w/ 1 gal soap down backside, worked tbg up and down and tbg became free. --- TOOH & standback MV prod tbg, found stuck swabbing tools in jt 176 3' above SN, slight crimped area on tube. --- Secure well & freeze protect equipment, SDFN, no accidents reported.

11-25-2008

SICP 290 psi, blow well down to flowback tank. --- TIH w/ MV prod tbg as follows- half muleshoe, 1 jt 2-1/16, tbg, 1/2" SN, 174 jts 2-1/16" tbg, (rabbit tbg while TIH) tag fill @ 5860', 290' of fill. --- Tie air package to tbg string, break circ w/ 8bph A/S mist, cleanout fill to 6040', 110' off top of packer. --- circulate bottoms up. --- standback 6 stands of tbg, secure well & location, freeze protect equipment, SDFN.

11-26-2008

SICP 300 psi, blow well down to flowback tank. --- RIW w/ 6 stands of tbg, tag fill @ 6040', break circ w/ 8bph 2% KCL A/S mist, cleanout to top of packer @ 6150'. --- circulate until returns are clean. --- LD 7 jts 2-1/16" tbg, PU tbg mandrel and land MV prod tbg as follows- 2-1/16" half muleshoe w/ exp check, 1 jt 2-1/16" tbg, 1/2" SN & 176 jts 2-1/16" 3.5#, J-55, 10rnd, IJ tbg. EOT @ 5935', SN @ 5901'. --- ND BOPE, NU Dual string WH, pump off exp check @ 950 psi, check for flow, remove BPV in DK tbg. --- RD surface equipment, lower derrick, prepare for rig move to CC #7C on Monday 12/1/2008, Secure well & equipment SD until Monday, no accidents reported.

ROSA UNIT #24B BLANCO MV/BASIN DK

Location: 860' FSL, 1965' FWL
SE/4 SW/4 Section 32(N), T31N, R5W
Rio Arriba, NM

Elevation: 6518' GR

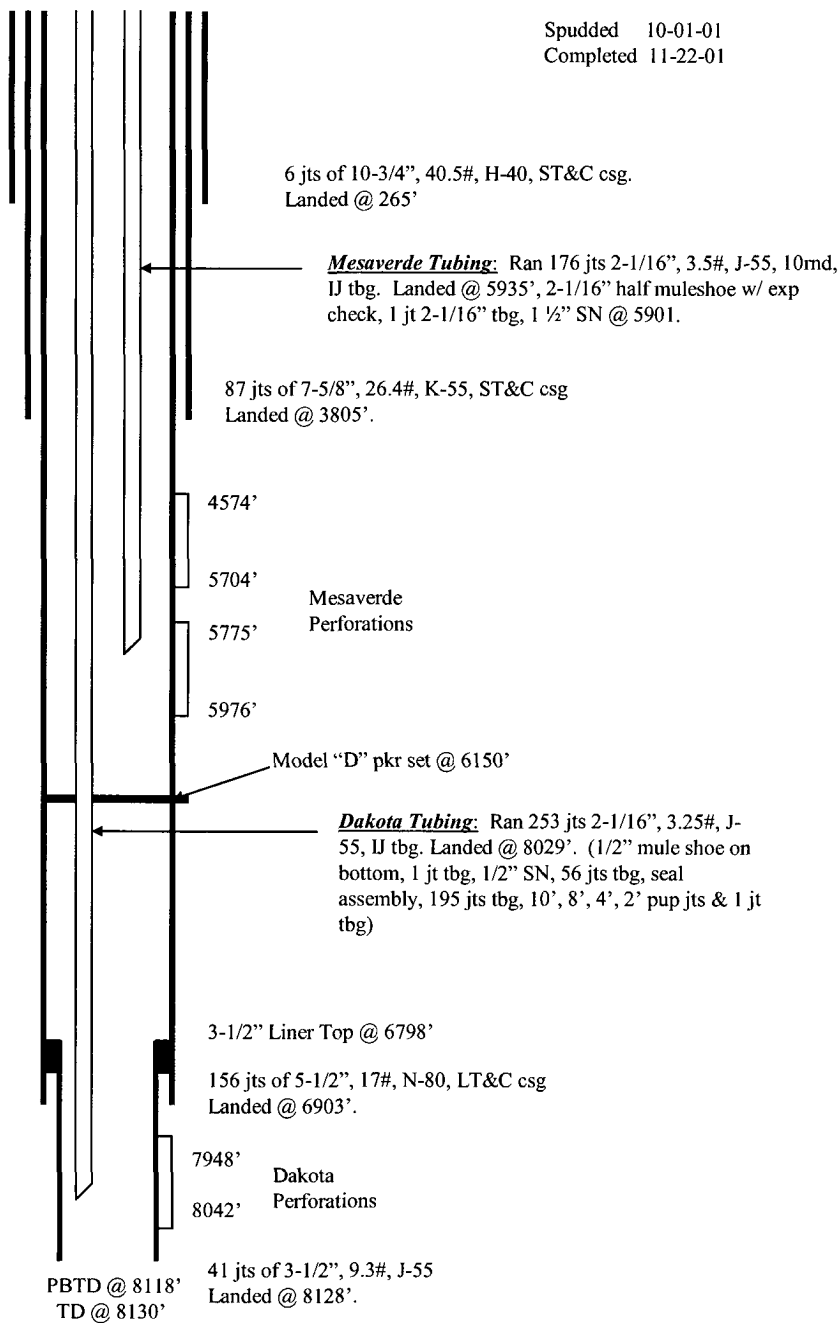
Spudded 10-01-01
Completed 11-22-01

<i>Tops</i>	<i>Depth</i>
Kirtland	2745'
Pictured Cliffs	3330'
Cliff House	5482'
Point Lookout	5774'
Mancos	6085'
Dakota	7948'

CliffHouse/Menefee 4574' - 5704' (33, 0.38" holes)
70,000# of 20/40 sand in 1683 BBL's slick water

Point Lookout 5775' - 5976' (23, 0.38" holes)
80,000# of 20/40 sand in 1860 BBL's slick water

Dakota 7948' - 8042' (19, 0.38" holes)
25,000# of 20/40 Acfrac SB Excel resin coated proppant
carried in 60Q Spectre G foam in 991 BBL's slick water



HOLE SIZE	CASING	CEMENT	CMT TOP
14-3/4"	10-3/4"	235 s x	Surface
9-7/8"	7-5/8"	950 s x	Surface
6-3/4"	5-1/2"	350 s x	5282'
4-3/4"	3-1/2"	265 s x	6372'