

UNITED STATES
DEPARTMENT OF THE INTERIOR
BUREAU OF LAND MANAGEMENT

RCVD DEC 12 '08
OIL CONS. DIV.
DIST. 3

APPLICATION FOR PERMIT TO DRILL, DEEPEN, OR PLUG BACK

| | | |
|---|---|---|
| 1a. Type of Work DRILL | RECEIVED FEB 13 2008 Bureau of Land Management Farmington Field Office | 5. Lease Number USA SF - 080675 Unit Reporting Number NMNM-78408-MV NMNM-78408B-DC |
| 1b. Type of Well GAS | | 6. If Indian, All. or Tribe |
| 2. Operator BURLINGTON RESOURCES Oil & Gas Company, LP | 7. Unit Agreement Name San Juan 27-4 Unit | |
| 3. Address & Phone No. of Operator PO Box 4289, Farmington, NM 87499 (505) 326-9700 | 8. Farm or Lease Name | |
| 4. Location of Well Unit N (SESW), 1130' FSL & 2410' FWL Latitude 36.540000 N. Longitude 107.256667 W. | 9. Well Number #57N | |
| | 10. Field, Pool, Wildcat Blanco Mesaverde/Basin Dakota | |
| | 11. Sec., Twn, Rge, Mer. (NMPM) N Sec. 28, T27N, R4W API # 30-039-30485 | |
| 14. Distance in Miles from Nearest Town 43 Miles/Blanco | 12. County Rio Arriba | 13. State NM |
| 15. Distance from Proposed Location to Nearest Property or Lease Line 1130' | | |
| 16. Acres in Lease 2400.00 | 17. Acres Assigned to Well MV/DK 320.0 (W/2) | |
| 18. Distance from Proposed Location to Nearest Well, Drlg, Compl, or Applied for on this Lease 1350' from San Juan 27-4 Unit 88/PC | | |
| 19. Proposed Depth 8509 | 20. Rotary or Cable Tools Rotary | |
| 21. Elevations (DF, FT, GR, Etc.) 7220' GL | 22. Approx. Date Work will Start | |
| 23. Proposed Casing and Cementing Program See Operations Plan attached | BLM'S APPROVAL OR ACCEPTANCE OF THE ACTION DOES NOT RELIEVE THE LESSEE AND OPERATOR FROM OBTAINING ANY OTHER AUTHORIZATION REQUIRED FOR OPERATION ON FEDERAL AND INDIAN LANDS | |
| 24. Authorized by: <u>Jamie Goodwin</u> Jamie Goodwin (Regulatory Technician) | Date <u>12/10/08</u> | |

PERMIT NO. _____

APPROVAL DATE _____

APPROVED BY [Signature]

TITLE Pct. Eng.

DATE 12/10/08

Archaeological Report attached

Threatened and Endangered Species Report attached

NOTE: This format is issued in lieu of U.S. BLM Form 3160-3

Title 18 U.S.C. Section 1001, makes it a crime for any person knowingly and willfully to make to any department or agency of the United States any false, fictitious or fraudulent statements or presentations as to any matter within its jurisdiction.

Example Master Plan Type 3

Bond Numbers NMB-000015 and NMB-000089

DRILLING OPERATIONS AUTHORIZED ARE
SUBJECT TO COMPLIANCE WITH ATTACHED
"GENERAL REQUIREMENTS".

NMOCD

NOTIFY AZTEC OGD 24 HRS.
PRIOR TO CASING CEMENT

This action is subject to technical and
procedural review pursuant to 43 CFR 3165.4
and appeal pursuant to 43 CFR 3165.4

DEC 17 2008

District I

1625 N. French Dr., Hobbs, NM 88240

District II

1301 W. Grand Avenue, Artesia, NM 88210

District III

1000 Rio Brazos Rd., Aztec, NM 87410

District IV

1220 S. St. Francis Dr., Santa Fe, NM 87505

State of New Mexico
Energy, Minerals & Natural Resources Department
OIL CONSERVATION DIVISION
1220 South St. Francis Dr.
Santa Fe, NM 87505

Fee Lease - 3 Copies

State Lease - 7 Copies

Submit to Appropriate District Office

Revised June 10, 2003

Form C-102

FEB 13 2008

☐ AMENDED REPORT

WELL LOCATION AND ACREAGE DEDICATION PLAT
Bureau of Land Management
Burlington Resources Oil and Gas Company LP

| | | |
|---|---|--|
| ¹ API Number 30-039-30485 | ² Pool Code 71599/72319 | ³ Pool Name DAKOTA / MESAVERDE |
| ⁴ Property Code 7452 | ⁵ Property Name SAN JUAN 27-4 | ⁶ Well Number 57N |
| ⁷ OGRID No. 14538 | ⁸ Operator Name BURLINGTON RESOURCES OIL AND GAS COMPANY LP | ⁹ Elevation 7,220' |

¹⁰ SURFACE LOCATION

| UL or lot no. | Section | Township | Range | Lot Idn | Feet from the | North/South line | Feet from the | East/West line | County |
|---------------|---------|----------|-------|---------|---------------|------------------|---------------|----------------|------------|
| N | 28 | 27-N | 4-W | | 1,130 | SOUTH | 2,410 | WEST | RIO ARriba |

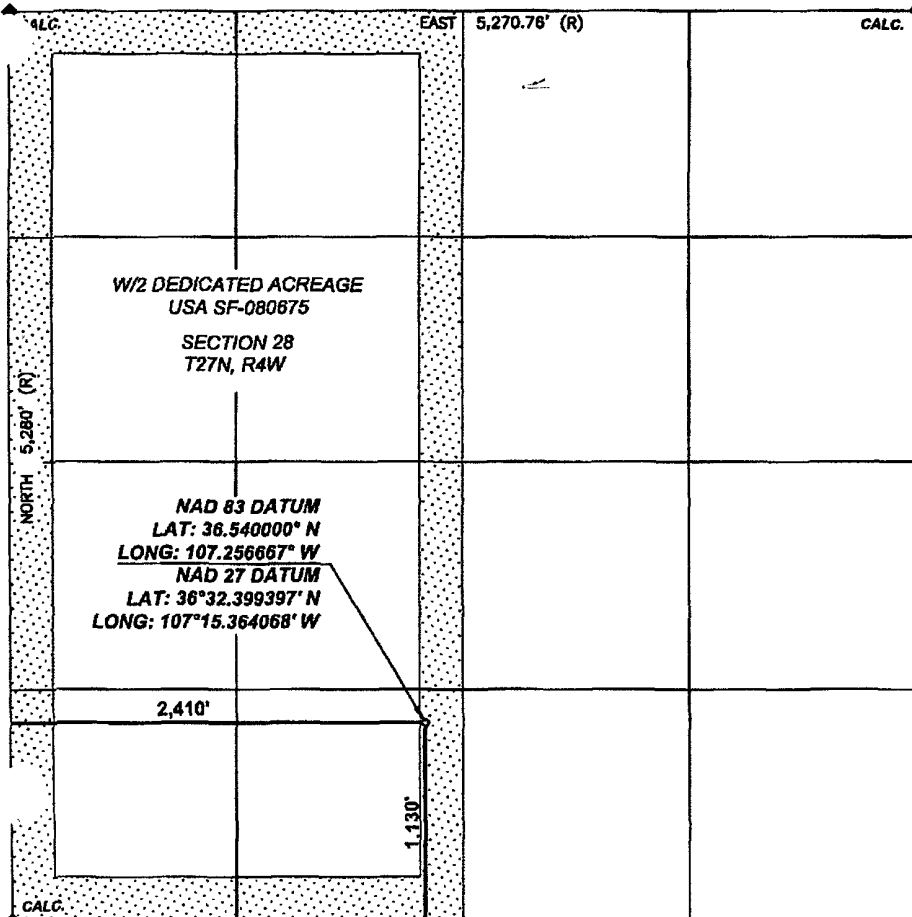
¹¹ Bottom Hole Location If Different From Surface

| UL or lot no. | Section | Township | Range | Lot Idn | Feet from the | North/South line | Feet from the | East/West line | County |
|---------------|---------|----------|-------|---------|---------------|------------------|---------------|----------------|--------|
| N | | | | | | | | | |

| | | | |
|--|-------------------------------|----------------------------------|-------------------------|
| ¹² Dedicated Acres 320 W/2 | ¹³ Joint or Infill | ¹⁴ Consolidation Code | ¹⁵ Order No. |
|--|-------------------------------|----------------------------------|-------------------------|

NO ALLOWABLE WILL BE ASSIGNED TO THIS COMPLETION UNTIL ALL INTERESTS HAVE BEEN
CONSOLIDATED OR A NON-STANDARD UNIT HAS BEEN APPROVED BY THE DIVISION

16

¹⁷ OPERATOR CERTIFICATION

I hereby certify that the information contained herein is true and complete to the best of my knowledge and belief, and that this organization either owns a working interest or unleased mineral interest in the land including the proposed bottom hole location or has a right to drill this well at this location pursuant to a contract with an owner of such a mineral or working interest, or to a voluntary pooling agreement or a compulsory pooling order heretofore entered by the division.

Signature

Jamie Goodwin

02/11/2008

Printed Name

Regulatory Tech.

Title and E-mail Address

02/11/2008

Date

¹⁸ SURVEYOR CERTIFICATION

I hereby certify that the well location shown on this plat was plotted from field notes of actual surveys made by me or under my supervision, and that the same is true and correct to the best of my belief

Date of Survey: 9/05/06

Signature and Seal of Professional Surveyor:



Certificate Number: NM 11393

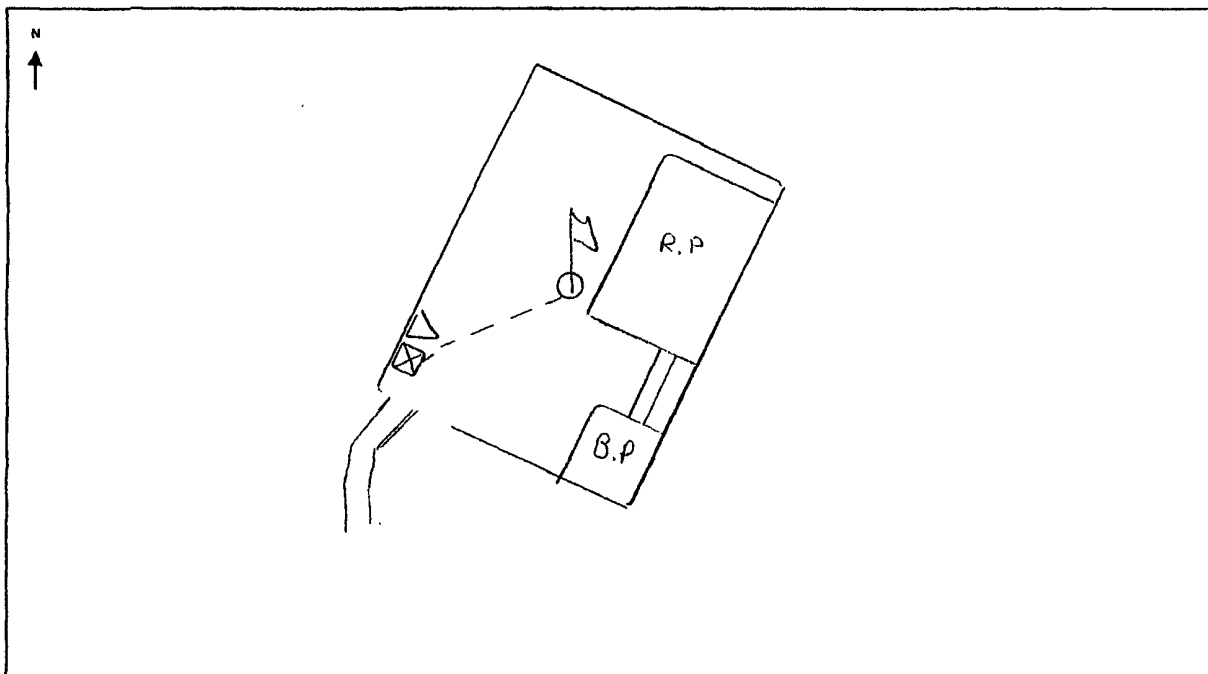


TECHNICAL SERVICES
A CORROSION COMPANY

CATHODIC PROTECTION PLAN FOR NEW WELLS

WELL NAME S.J. 27-4 #57N LEGALS N-28-27-4 COUNTY Rio Arriba

PURPOSED C.P. SYSTEM: Drill G.B. and set solar on southwest edge of location. Trench approx 210' of #8 neg cable from solar to well head.



| EXISTING WELLHEAD | METER HOUSE | G.B. | POWER SOURCE | CABLE | NEW WELL | OVERHEAD A.C. |
|-------------------|-------------|------|--------------|-------|----------|---------------|
| | | | | | | |

COMMENTS: _____

NEAREST POWER SOURCE _____ DISTANCE: _____

PIPELINES IN AREA: _____

TECHNICIAN: Michael H. Hargrave DATE: 11/3/06

PROJECT PROPOSAL - New Drill / Sidetrack

San Juan Business Unit

SAN JUAN 27-4 UNIT 57N

DEVELOPMENT

| | | | | | |
|------------------------------------|--|----------------------------|--|-------------------|--------------------|
| Lease: | | AFE #: WAN.ZA2.7200/7201MV | | AFE \$: | |
| Field Name: hBR_SAN JUAN 27-4 UNIT | | Rig: XXX Deferred PDT | | State: NM | County: RIO ARRIBA |
| Geologist: | | Phone: | | Geophysicist: | |
| Geoscientist: Head, Chip F | | Phone: 505-326-9772 | | Phone: | |
| Res. Engineer: Prabowo, Wahyu | | Phone: 505-326-9797 | | Proj. Field Lead: | |
| | | | | Phone: | |

Primary Objective (Zones):

| Zone | Zone Name |
|--------|---------------------------------|
| RON | BLANCO MESAVERDE (PRORATED GAS) |
| R20076 | DAKOTA(R20076) |

| | | | | | |
|---------------------|------------------------|----------------------|----------------|---------------|-------------|
| Location: Surface | | Datum Code: NAD 27 | | Straight Hole | |
| Latitude: 36.539990 | Longitude: -107.256068 | X: | Y: | Section: 28 | Range: 004W |
| Footage X: 2410 FWL | Footage Y: 1130 FSL | Elevation: 7220 (FT) | Township: 027N | | |
| Tolerance: | | | | | |

| | | | |
|---|-----------------------------|------------------|--------------------|
| Location Type: Restricted | Start Date (Est.): 1/1/2020 | Completion Date: | Date In Operation: |
| Formation Data: Assume KB = 7234 Units = FT | | | |

| Formation Call & Casing Points | Depth (TVD in Ft) | SS (Ft) | Depletion (Yes/No) | BHP (PSIG) | BHT | Remarks |
|--------------------------------|-------------------|---------|--------------------------|------------|-----|---|
| Surface Casing | 200 | 7034 | <input type="checkbox"/> | | | 12-1/4" hole, 9-5/8" 32.3 ppf, H-40, STC casing. Cement w/ 171 cu. ft. |
| OJAM | 3482 | 3752 | <input type="checkbox"/> | | | Possible water flows. |
| KRLD | 3592 | 3642 | <input type="checkbox"/> | | | |
| FRLD | 3667 | 3567 | <input type="checkbox"/> | | | Possible gas. |
| PCCF | 4062 | 3172 | <input type="checkbox"/> | | | |
| LEWS | 4145 | 3089 | <input type="checkbox"/> | | | |
| Intermediate Casing | 4245 | 2989 | <input type="checkbox"/> | | | 8-3/4" Hole. 7", 20 ppf, J-55, STC Casing. Cement with 956 cu. ft. Circulate cement to surface. |
| HURF | 4557 | 2677 | <input type="checkbox"/> | | | |
| CHRA | 5025 | 2209 | <input type="checkbox"/> | | | |
| UCLFH | 5628 | 1606 | <input type="checkbox"/> | 800 | | |
| CLFH | 5743 | 1491 | <input type="checkbox"/> | | | Gas; possibly wet |
| MENF | 5898 | 1336 | <input type="checkbox"/> | | | Gas. |
| PTLK | 6232 | 1002 | <input type="checkbox"/> | | | Gas. |
| MNCS | 6733 | 501 | <input type="checkbox"/> | | | |
| GLLP | 7428 | -194 | <input type="checkbox"/> | | | Gas. Possibly wet. |
| GRHN | 8183 | -949 | <input type="checkbox"/> | | | Gas possible, highly fractured |
| GRRS | 8243 | -1009 | <input type="checkbox"/> | | | |
| TWLS | 8267 | -1033 | <input type="checkbox"/> | 1200 | | Gas |
| CBBO | 8404 | -1170 | <input type="checkbox"/> | | | Gas |
| CBRL | 8442 | -1208 | <input type="checkbox"/> | | | |
| OKCN | 8485 | -1251 | <input type="checkbox"/> | | | |
| ENCINAL | 8509 | -1275 | <input type="checkbox"/> | | | TD at T/ENCN |
| TD | 8509 | -1275 | <input type="checkbox"/> | | | 6-1/4" Hole. 4-1/2", 10.50 ppf, J-55, STC Casing. Cement with 580 cu. ft. Circulate cement a minimum of 100' inside previous casing string. No open hole logs. Cased hole TDT with GR to surface. |

Reference Wells:

PROJECT PROPOSAL - New Drill / Sidetrack

San Juan Business Unit

SAN JUAN 27-4 UNIT 57N

DEVELOPMENT

| Reference Type | Well Name | Comments |
|----------------|------------|--------------|
| Production | 27-4 #57 | SW 28-27N-4W |
| Production | 27-4 #101M | SE 28-27N-4W |

Logging Program:

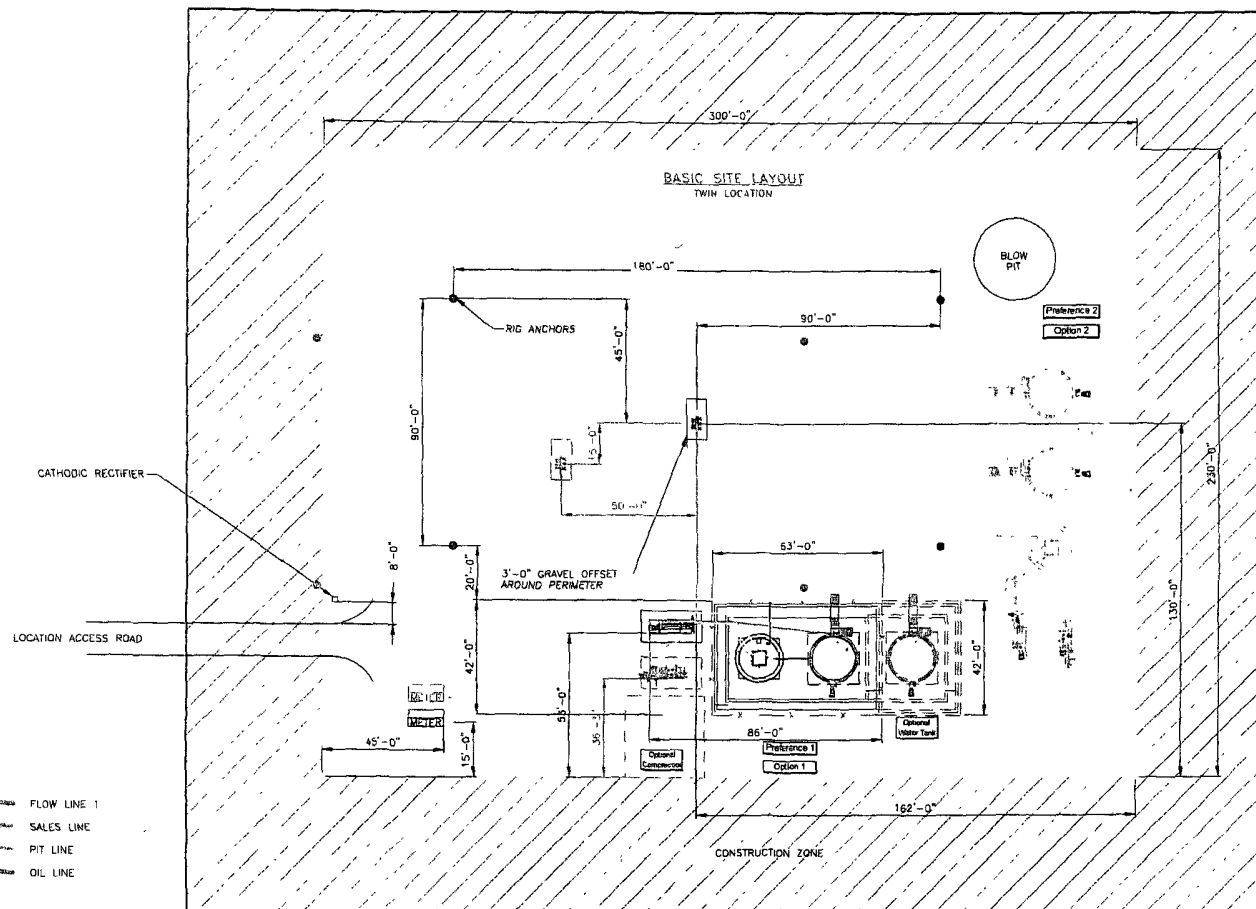
Intermediate Logs: ☐ Log only if show ☐ GR/ILD ☐ Triple Combo

TD Logs: ☐ Triple Combo ☐ Dipmeter ☐ RFT ☐ Sonic ☐ VSP ☐ TDT ☒ Other

GR_CBL

Additional Information:

| Log Type | Stage | From (Ft) | To (Ft) | Tool Type/Name | Remarks |
|----------|-------|-----------|---------|----------------|---------|
|----------|-------|-----------|---------|----------------|---------|



FLOW LINE 1
 SALES LINE
 PIT LINE
 OIL LINE

SEE SHEET 3 & 4 FOR PIPING DETAILS
ALL UNDERGROUND PIPE IS TO BE BURIED A MIN. OF 3'-0" TOP

SHEET 1 OF 5

| | | | | | | | | | | | | | | | | | | | | | |
|---|-------------|------|----|-------|-----|------|-----|--|--|--|--------------------|----------|------|--------------------|-------------|---|--|--|-------------|---------------|--|
| <div>1</div> <div>2</div> <div>3</div> <div>4</div> <div>5</div> <div>6</div> <div>7</div> <div>8</div> <div>9</div> <div>10</div> <div>11</div> <div>12</div> <div>13</div> <div>14</div> <div>15</div> <div>16</div> <div>17</div> <div>18</div> <div>19</div> <div>20</div> <div>21</div> <div>22</div> <div>23</div> <div>24</div> <div>25</div> <div>26</div> <div>27</div> <div>28</div> <div>29</div> <div>30</div> <div>31</div> <div>32</div> <div>33</div> <div>34</div> <div>35</div> <div>36</div> <div>37</div> <div>38</div> <div>39</div> <div>40</div> <div>41</div> <div>42</div> <div>43</div> <div>44</div> <div>45</div> <div>46</div> <div>47</div> <div>48</div> <div>49</div> <div>50</div> <div>51</div> <div>52</div> <div>53</div> <div>54</div> <div>55</div> <div>56</div> <div>57</div> <div>58</div> <div>59</div> <div>60</div> <div>61</div> <div>62</div> <div>63</div> <div>64</div> <div>65</div> <div>66</div> <div>67</div> <div>68</div> <div>69</div> <div>70</div> <div>71</div> <div>72</div> <div>73</div> <div>74</div> <div>75</div> <div>76</div> <div>77</div> <div>78</div> <div>79</div> <div>80</div> <div>81</div> <div>82</div> <div>83</div> <div>84</div> <div>85</div> <div>86</div> <div>87</div> <div>88</div> <div>89</div> <div>90</div> <div>91</div> <div>92</div> <div>93</div> <div>94</div> <div>95</div> <div>96</div> <div>97</div> <div>98</div> <div>99</div> <div>100</div> | | | | | | | | | | | ENGINEERING REVIEW | | | REFERENCE DRAWINGS | | <div>ConocoPhillips</div> <div>SAN JUAN BUSINESS UNIT</div> | | CONOCOPHILLIPS HIGH PRESSURE 3 PHASE FACILITY DIAGRAM- SITE LAYOUT | | | |
| | | | | | | | | | | | DISCIPLINE | REVIEWED | DATE | NO | DESCRIPTION | | | CLIENT NO. | CLIENT ADDR | APPR. DATE | |
| | | | | | | | | | | | PROCESS | | | | | | | SCALE | NOSE | CREATION DATE | |
| | | | | | | | | | | | MECHANICAL | | | | | | | | | | |
| | | | | | | | | | | | PROCESS | | | | | | | | | | |
| | | | | | | | | | | | ELECTRICAL | | | | | | | | | | |
| | | | | | | | | | | | I & C | | | | | | | | | | |
| | | | | | | | | | | | CONSTRUCTION | | | | | | | | | | |
| | | | | | | | | | | | PROJECT | | | | | | | | | | |
| | | | | | | | | | | | | | | | | | | | | | |
| REV | DESCRIPTION | DATE | BY | CHK'D | ENG | DISC | PRJ | | | | | | | | | | | HP3PHASE-REV1 | | | |

h:\prj\SanJuan\SanJuan\Regulatory\Twin Location Site Layout.dwg, 06/28/2007 - 05:39pm

BURLINGTON RESOURCES OIL & GAS COMPANY LP

SAN JUAN 27-4 UNIT 57N

1,130' FSL, 2,410' FWL

SECTION 28, T27N, R04W, N.M.P.M.,

RIO ARRIBA COUNTY, NEW MEXICO

ELEV. 7,220' NAVD88

DRIVING DIRECTIONS FROM BLOOMFIELD N.M. AT INTERSECTION HWY 550 AND 64. TRAVEL EAST ON HWY 64 TO MILE MARKER 96.3, TURN RIGHT (SOUTHEAST).

- STAY ON MAIN ROAD AND TURN LEFT AT 3.4 MILES, CONTINUE ON MAIN ROAD.
- COME TO AN INTERSECTION AT 6.7 MILES (FROM HWY) TURN RIGHT AND START HEADING SOUTH TOWARDS SANTOS PEAK.
- GO 7.75 MILES TO INTERSECTION, TURN RIGHT (SOUTH) AT INTERSECTION.
- CROSS CARRIZO CANYON WASH AND CONTINUE TO FOUR WAY INTERSECTION AT 1.2 MILES TURN LEFT (SOUTHEASTERLY) ON FR 357 AND HEAD TOWARDS JARMILLO CANYON.
- THE ROAD EVENTUALLY TURNS INTO FORREST ROAD 316, STAY ON MAIN ROAD FOR 6.60 MILES AND TURN RIGHT (NORTH) ON FORREST ROAD 316D.
- GO 0.70 MILES TO INTERSECTION, TURN RIGHT (NORTHEAST) AND GO 400' TO BEGINNING OF ACCESS ROAD SAN JUAN 27-4 UNIT 57N.