

UNITED STATES
DEPARTMENT OF THE INTERIOR
BUREAU OF LAND MANAGEMENT

APPLICATION FOR PERMIT TO DRILL, DEEPEN, OR PLUG BACK

1a. Type of Work DRILL	5. Lease Number NMSF-078120-A Unit Reporting Number	
1b. Type of Well GAS	6. If Indian, All. or Tribe	
2. Operator BURLINGTON RESOURCES Oil & Gas Company	7. Unit Agreement Name	
3. Address & Phone No. of Operator PO Box 4289, Farmington, NM 87499 (505) 326-9700	8. Farm or Lease Name Federal G 9. Well Number 1N	
4. Location of Well 1135' FSL, 1665' FWL Latitude 36° 51.1, Longitude 108° 04.3	10. Field, Pool, Wildcat Blanco MV/Basin DK 11. Sec., Twn, Rge, Mer. (NMPM) Sec 35, T-31-N, R-12W API # 30-045-30973	
14. Distance in Miles from Nearest Town 7.2 Miles to Int. Hwy 550 & Hwy 173 in Aztec NM	12. County San Juan	13. State NM
15. Distance from Proposed Location to Nearest Property or Lease Line 1135'	17. Acres Assigned to Well 320 W2	
16. Acres in Lease	18. Distance from Proposed Location to Nearest Well, Drig, Compl, or Applied for on this Lease 2110	
19. Proposed Depth 6865	19. Rotary or Cable Tools Rotary	
21. Elevations (DF, FT, GR, Etc.) 5871' GR	22. Apprx. Date Work will Start 1-4-02	
23. Proposed Casing and Cementing Program See Operations Plan attached	24. Authorized by: <u>Regulatory/Compliance Supervisor</u> Date	

DRILLING OPERATIONS AUTHORIZED ARE
SUBJECT TO COMPLIANCE WITH ATTACHED
"GENERAL REQUIREMENTS"

PERMIT NO. _____ APPROVAL DATE _____
APPROVED BY /s/ David J. Markiewicz TITLE _____ DATE NOV 13 2003

Archaeological Report to be submitted

Threatened and Endangered Species Report to be submitted

NOTE: This format is issued in lieu of U.S. BLM Form 3160-3

Title 18 U.S.C. Section 1001, makes it a crime for any person knowingly and willfully to make to any department or agency of the United States any false, fictitious or fraudulent statements or presentations as to any matter within its jurisdiction.

NMOCU

DISTRICT I
P.O. Box 1980, Hobbs, N.M. 88241-1980

DISTRICT II
P.O. Drawer DD, Artesia, N.M. 88211-0719

DISTRICT III
1000 Rio Brazos Rd., Aztec, N.M. 87410

DISTRICT IV
PO Box 2088, Santa Fe, NM 87504-2088

State of New Mexico
Energy, Minerals & Natural Resources Department

OIL CONSERVATION DIVISION

P.O. Box 2088
Santa Fe, NM 87504-2088

Form C-102

Revised February 21, 1994

Instructions on back
Submit to Appropriate District Office

State Lease - 4 Copies

Fee Lease - 3 Copies

☐ AMENDED REPORT

WELL LOCATION AND ACREAGE DEDICATION PLAT

¹ API Number 30-045 30973	² Pool Code 72319/71599	³ Pool Name Blanco MV/Basin DK
⁴ Property Code 24110	⁵ Property Name FEDERAL G	⁶ Well Number 1N
⁷ OGRID No. 14538	⁸ Operator Name BURLINGTON RESOURCES OIL & GAS INC.	⁹ Elevation 5871

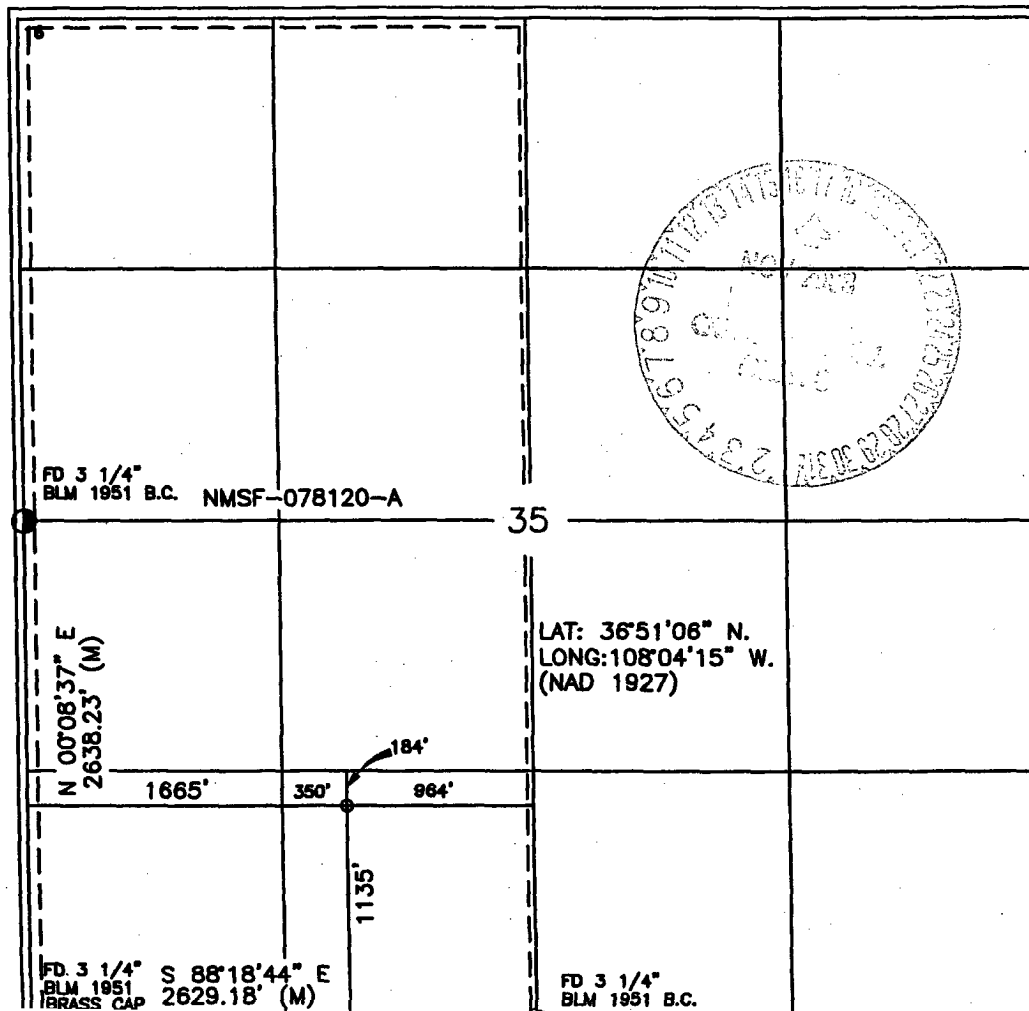
¹⁰ Surface Location

UL or lot no.	Section	Township	Range	Lot Idn	Feet from the	North/South line	Feet from the	East/West line	County
N	35	31-N	12-W		1135	SOUTH	1665	WEST	SAN JUAN

¹¹ Bottom Hole Location If Different From Surface

UL or lot no.	Section	Township	Range	Lot Idn	Feet from the	North/South line	Feet from the	East/West line	County
¹² Dedicated Acres W-320			¹³ Joint or Infill		¹⁴ Consolidation Code		¹⁵ Order No.		

NO ALLOWABLE WILL BE ASSIGNED TO THIS COMPLETION UNTIL ALL INTERESTS HAVE BEEN CONSOLIDATED
OR A NON-STANDARD UNIT HAS BEEN APPROVED BY THE DIVISION.



17. OPERATOR CERTIFICATION

I hereby certify that the information contained herein is true and complete to the best of my knowledge and belief

Peggy Cole
Signature

Peggy Cole
Printed Name

Regulatory Supervisor
Title

1-4-02
Date

18 SURVEYOR CERTIFICATION

I hereby certify that the well location shown on this plat was plotted from field notes of actual surveys made by me or under my supervision, and that the same is true and correct to the best of my belief

9-19-02
Date of Survey

Roy A. Rush
Signature and Seal of Professional Surveyor

8894
Certificate Number

OPERATIONS PLAN

Well Name: Federal G 1N
Location: 1135' FSL, 1665' FWL, Sec 35, T-31-N, R-12-W
San Juan County, NM
Latitude 36° 51.1, Longitude 108° 04.3
Formation: Blanco Mesaverde/Basin Dakota
Elevation: 5871' GL

<u>Formation Tops:</u>	<u>Top</u>	<u>Bottom</u>	<u>Contents</u>
Surface	San Jose	618	
Ojo Alamo	618'	673'	aquifer
Kirtland	673'	1583'	gas
Fruitland	1583'	2248'	gas
Pictured Cliffs	2248'	2383'	gas
Lewis	2383'	2988'	gas
Mesa Verde	2988'	3318'	gas
Chacra	3318'	3908'	gas
Massive Cliff House	3908'	4008'	gas
Menefee	4008'	4583'	gas
Massive Point Lookout	4583'	4923'	gas
Mancos	4923'	5863'	gas
Gallup	5863'	6590'	gas
Greenhorn	6590'	6643'	gas
Graneros	6643'	6703'	gas
Dakota	6703'		
TD	6865'		

Logging Program:

Cased hole - CBL-CCL-GR - TD to surface
Open hole - None
Cores - none

Mud Program:

<u>Interval</u>	<u>Type</u>	<u>Weight</u>	<u>Vis.</u>	<u>Fluid Loss</u>
0- 320'	Spud	8.4-8.9	40-50	no control
320-6865'	LSND	8.4-9.0	30-60	no control

Pit levels will be visually monitored to detect gain or loss of fluid control.

Casing Program:

<u>Hole Size</u>	<u>Depth Interval</u>	<u>Csg. Size</u>	<u>Wt.</u>	<u>Grade</u>
12 1/4"	0' - 320'	8 5/8"	24.0#	WC-50
7 7/8"	0' - 6865'	4 1/2"	10.5#	J-55

Tubing Program:

0' - 6865' 2 3/8" 4.7# J-55 EUE

BOP Specifications, Wellhead and Tests:

Surface to TD -

11" 3000 psi minimum double gate BOP stack (Reference Figure #1).
After nipple-up prior to drilling out surface casing, rams and casing will be tested to 600 psi for 30 minutes.

2" nominal, 3000 psi minimum choke manifold (Reference Figure #3).

Completion Operations -

6" 3000 psi double gate BOP stack (Reference Figure #2).

After nipple-up prior to completion, pipe rams and casing top will be tested to 3000 psi for 15 minutes.

Surface to Total Depth -

2" nominal, 3000 psi minimum choke manifold (Reference Figure #3).

Wellhead -

8 5/8" x 4 1/2" x 2 3/8" x 3000 psi tree assembly.

General -

- Pipe rams will be actuated once each day and blind rams will be actuated once each trip to test proper functioning.
- An upper kelly cock valve with handle available and drill string valves to fit each drill string will be available on the rig floors at all times.
- A BOP pit level drill will be conducted weekly for each drilling crew.
- All of the BOP tests and drills will be recorded in the daily drilling reports.
- Blind and pipe rams will be equipped with extension hand wheels.

Cementing:

8 5/8" surface casing -

Cement to surface w/336 sx Class "G" cement w/3% calcium chloride and 1/4#/sx cellophane flakes (396 cu.ft. of slurry, 200% excess to circulate to surface.) WOC 8 hr prior to drilling out surface casing. Test casing to 600 psi for 30 minutes.

Saw tooth guide shoe on bottom. Bowspring centralizers will be run in accordance with Onshore Order #2.

Production Casing - 4 1/2"

4 1/2" production casing -

Lead w/324³⁴² sx Litecrete, 0.11% dispersant. Tail w/154¹²⁴⁵ sx 50/50 Class "G" poz w/5% gel, 0.25 pps celloflakes, 5 pps gilsonite, 0.25% fluid loss, 0.15% dispersant, 0.1% retarder (1056 cu. ft. of slurry, 50% excess.)

Note: If open hole logs are run, cement volumes will be based on 25% excess over caliper volumes.

Float shoe on bottom. Three centralizers run every other joint above shoe. Thirty-five centralizers - one every 4th joint to the base of the Ojo Alamo @ 673'. Two turbolizing type centralizers - one below and one into the base of the Ojo Alamo @ 673'. Standard centralizers thereafter every fourth joint up to the base of the surface pipe.