

UNITED STATES
DEPARTMENT OF THE INTERIOR
BUREAU OF LAND MANAGEMENT

RECEIVED

FORM APPROVED
OMB No 1004-0135
Expires July 31, 1996

SUNDRY NOTICES AND REPORTS ON WELLS

Do not use this form for proposals to drill or reenter an abandoned well. Use Form 3160-3 (APD) for such proposals.

SUBMIT IN TRIPLICATE - Other instructions on reverse side

1.

☒ Oil Well ☐ Gas Well ☐ Other

2. Name of Operator

Elm Ridge Exploration Co., LLC

3a. Address

PO Box 156, Bloomfield, NM 87413

3b. Phone No. (include area code)

505-632-3476 x 201

4. Location of Well (Footage, Sec., T., R., M., or Survey Description)

1850 FSL X 1650 FWL

K - Sec.21-T25N-R11W

5. Lease Serial No.

NOO-C-014-20-5243

6. If Indian, Allottee or Tribe Name

Navajo Allotted

7. If Unit or CA/Agreement, Name and/or No.

8. Well Name and No.

Irene Whitney Com #1

9. API Well No.

30-045-25746

10. Field and Pool, or Exploratory Area

Bisti Lower Gallup

11. County or Parish, State

San Juan County, NM

12. CHECK APPROPRIATE BOX(ES) TO INDICATE NATURE OF NOTICE, REPORT, OR OTHER DATA

TYPE OF SUBMISSION

TYPE OF ACTION

☒ Notice of Intent

☐ Subsequent Report

☐ Final Abandonment Notice

☐ Acidize

☐ Alter Casing

☐ Casing Repair

☐ Change Plans

☐ Convert to Injection

☐ Deepen

☐ Fracture Treat

☐ New Construction

☒ Plug and Abandon

☐ Plug Back

☐ Production (Start/Resume)

☐ Reclamation

☐ Recomplete

☐ Temporarily Abandon

☐ Water Disposal

☐ Water Shut-Off

☐ Well Integrity

☐ Other

13 Describe Proposed or Completed Operations (clearly state all pertinent details, including estimated starting date of any proposed work and approximate duration thereof. If the proposal is to deepen directionally or recompleat horizontally, give subsurface locations and measured and true vertical depths of all pertinent markers and zones. Attach the Bond under which the work will be performed or provide the Bond No. on file with BLM/BIA. Required subsequent reports shall be filed within 30 days following completion of the involved operations. If the operation results in a multiple completion or recompleat in a new interval, a Form 3160-4 shall be filed once Testing has been completed. Final Abandonment Notices shall be filed only after all requirements, including reclamation, have been completed, and the operator has determined that the site is ready for final inspection.)

Elm Ridge Exploration Co., LLC requests approval to plug and abandon this well in accordance with the attached procedure.

RCVD JAN 28 '09
OIL CONS. DIV.
DIST. 3

14. I hereby certify that the foregoing is true and correct

Name (Printed/Typed)

Amy Mackey

Title

Production Assistant

Signature

Date

January 23, 2009

THIS SPACE FOR FEDERAL OR STATE USE

Approved by

Original Signed: Stephen Mason

Title

Date

JAN 27 2009

Conditions of approval, if any, are attached. Approval of this notice does not warrant or certify that the applicant holds legal or equitable title to those rights in the subject lease which would entitle the applicant to conduct operations thereon.

Office

Title 18 U.S.C. Section 1001, makes it a crime for any person knowingly and willfully to make to any department or agency of the United States any false, fictitious or fraudulent statements or representations as to any matter within its jurisdiction.

(Instructions on reverse)

NMOCD

Plugging Program for Irene Whitney Com #1:

Plug 1: Insure that there is no CIBP at 5300'. If so, DO and CO to original PBTD of 6031'. Set retainer at 5806'. Squeeze below retainer with 11 sx. Spot 6 sx on top of retainer to cover across perforations and top of Dakota.

Plug 2: Set retainer at 4926'. Squeeze below retainer with 18 sx. Spot 8 sx on top of retainer to cover across perforations and top of Gallup. *Bring cement top to 4819'*

Plug 3: Spot 17 sx balanced plug from 2172-2072' to cover 100' across Cliff House top.

Plug 4: Perf 4 holes at 1775'. Set retainer at 1725'. Squeeze below retainer with 42 sx. Spot 6 sx on top of retainer to cover from 1775-1675' to cover 100' across Chacra top inside and outside per NMOCD requirements.

Plug 5: Perf 4 holes at 1417'. Set retainer at ^{1367'}992'. Squeeze below retainer with ~~216~~ sx. Spot 8 sx on top of retainer to cover from 1417-872' to cover 100' across Pictured Cliffs and Fruitland top inside and outside.

Plug 6: Perf 4 squeeze holes at ^{608'}571'. Tie on to 5-1/2" casing. Establish rate through perforations. Pump 173 sx down 5-1/2" casing, or sufficient volume to circulate cement to surface inside and outside 5-1/2" casing.

Cut off wellhead, install dry hole marker, and reclaim location in accordance with conditions of approval.

Elm Ridge Exploration

Pertinent Data Sheet

Well Name: Irene Whitney Com #1

Footage: 1850' FSL and 1650' FWL

Location: Section 21, T25N, R11W

County: San Juan County, NM

API No.: 30-045-25746

Field: Bisti Lower GP, Basin DK **Elevation:** 6585' KB

TD: 6077' KB

PBTD: 6031' KB

NOTE: There may be a CIBP at 5300'. Records are not clear.

Completed: 8/2/83

Casing Record:

Hole Size	Casing Size	Wt.	Grade	Depth Set	Cement
12-1/4"	8-5/8"	24#	K-55	521'	233 ft ³ (Circ. cement to surface)
7-7/8"	5-1/2"	15.5#	K-55	6072'	1030 ft ³ TOC: 1916' (calc. 70%)

Rod Record: 2-1/2"x1-1/2"x14' RWBC, 4x1-1/4" sinker bars, 61x3/4" guided scraper rods, 102x3/4" plain, 36x7/8" plain, 7/8"x6'x6'x4'x2' pony rods, 1-1/4"x22' polish rod w/ 1-1/2"x12' liner.

Tubing Record: 1 jt 2-3/8" muleshoe and MA, 2-7/8" SN, 8 jts 2-7/8" tbg, 5-1/2"x2-7/8" Arrow Tac (40 pts. shear), 156 jts. 2-7/8".

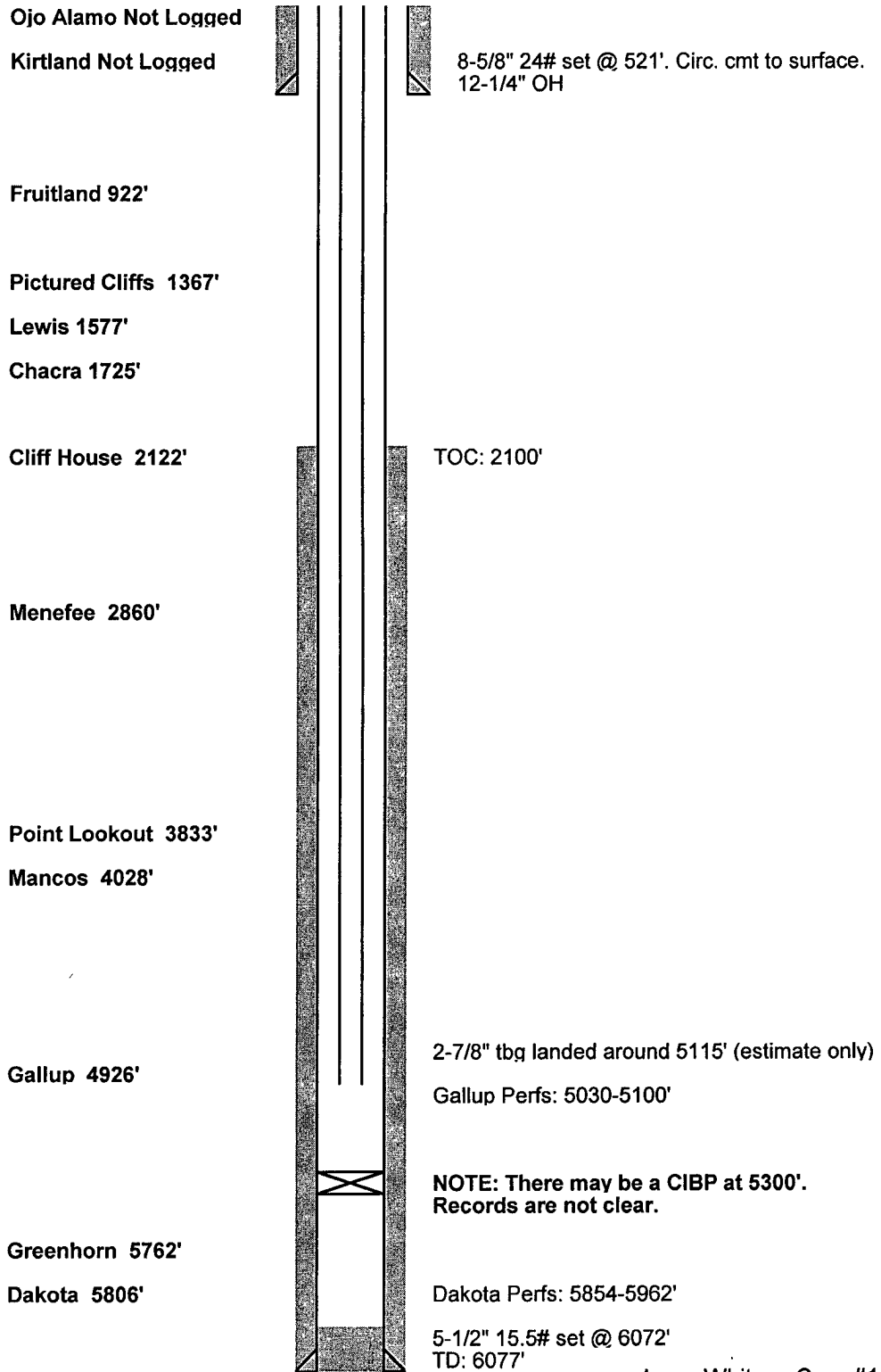
Formation Tops:

Nacimiento	Surface
Ojo Alamo	Not Logged (behind surface casing)
Kirtland	Not Logged (behind surface casing)
Fruitland	922'
Pictured Cliffs	1367'
Lewis	1577'
Chacra	1725'
Cliff House	2122'
Menefee	2860'
Point Lookout	3833'
Mancos	4028'
Gallup	4926'
Greenhorn	5762'
Dakota	5806'

Perforations: Gallup: 5030-5100'
Dakota: 5854-5962'

Wellbore Diagram
Irene Whitney Com #1
SW/4 Sec. 21, T25N, R11W
San Juan County, NM
API #30-045-25746

Before



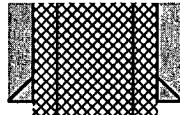
Irene Whitney Com #1 WBD
1/23/2009

Wellbore Diagram
Irene Whitney Com #1
SW/4 Sec. 21, T25N, R11W
San Juan County, NM
API #30-045-25746

After

Ojo Alamo Not Logged

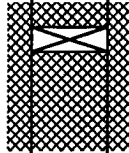
Kirtland Not Logged



8-5/8" 24# set @ 521'. Circ. cmt to surface.
12-1/4" OH

Plug 6

Fruitland 922'



Plug 5

Pictured Cliffs 1367'

Lewis 1577'

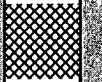


Plug 4

Chacra 1725'

TOC: 1916'

Cliff House 2122'



Plug 3

Menefee 2860'

Point Lookout 3833'

Mancos 4028'

Gallup 4926'



Plug 2

Greenhorn 5762'

Dakota 5806'



Plug 1

5-1/2" 15.5# set @ 6072'
TD: 6077'

Irene Whitney Com #1 WBD
1/23/2009

**UNITED STATES DEPARTMENT OF THE INTERIOR
BUREAU OF LAND MANAGEMENT
FARMINGTON DISTRICT OFFICE
1235 LA PLATA HIGHWAY
FARMINGTON, NEW MEXICO 87401**

Attachment to notice of
Intention to Abandon:

Re: Permanent Abandonment
Well: 1 Irene Whitney

CONDITIONS OF APPROVAL

1. Plugging operations authorized are subject to the attached "General Requirements for Permanent Abandonment of Wells on Federal and Indian Lease."

2. Farmington Office is to be notified at least 24 hours before the plugging operations commence (505) 599-8907.

3. The following modifications to your plugging program are to be made:

a) Bring the top of the Gallup plug to 4819'.

b) Place the Kirtland/Ojo Alamo/surface plug from 608' to surface inside and outside the 5 ½" casing.

You are also required to place cement excesses per 4.2 and 4.4 of the attached General Requirements.

Office Hours: 7:45 a.m. to 4:30 p.m.