

1/30/03

MIRU KEY RIG #39, AND MOUNTAIN AIR DRILLING SERVICES. WELL FLOWING 60 MCF @ 200# THIS AM. BLED DOWN. ND WELLHEAD. NU BOP W/ 6" BLOOIE LINE. TOO H W/ 158 JTS. 2-3/8" EUE J-55 TBG.(4961'). PU 3-7/8" BIT, BIT SUB, AND TIH W/ 2-3/8" EUE J-55 TBG. TO SAND @ 4965'. BREAK CIRCULATION W/ AIR AND CLEAN OUT SAND TO P.B.T.D.(5154'). SMALL AMOUNT OF GAS AND WATER W/ SAND. PUIC. HOOK WELL UP TO SALES LINE FLOWING 75 MCF @ 200#. SDFN. D-\$4000, T-\$4000, DAY-1.

1/31/03

WELL FLOWING 110 MCF @ 200# THIS AM. RIH AND TAG FILL @ 5111'. BREAK CIRCULATION W/ AIR AND CLEAN OUT SAND TO P.B.T.D.(5154'). SMALL AMOUNT OF GAS AND WATER W/ NO SAND. TOO H. PU 4-1/2" CASING SCRAPER AND TIH W/ 2-3/8" EUE J-55 TBG. TO P.B.T.D.(5154'). TOO H AND LD CASING SCRAPER. HOOK WELL UP TO SALES LINE FLOWING 75 MCF @ 200#. SDFN. D-\$4500, T-\$8500, DAY-2.

2/01/03

WELL FLOWING 110 MCF @ 205# THIS AM. RIG DAY OFF.

2/02/03

WELL FLOWING 110 MCF @ 205# THIS AM. RIG DAY OFF.

2/03/03

WELL FLOWING 110 MCF @ 205# THIS AM. BLED DOWN. RU BLUE JET WIRELINE SERVICES. RIH W/ BLUE JET 40 ARM CALIPER / MIT TOOL AND LOG FROM P.B.T.D.(5154') TO SURFACE. CASING LOOKS GOOD. RD BLUE JET WIRELINE SERVICES. HOOK WELL UP TO SALES LINE FLOWING 80 MCF @ 205#. SDFN. D-\$7500, T-\$16,000, DAY-3.

2/04/03

WELL FLOWING 110 MCF @ 210# THIS AM. RIH AND TAG FILL @ 5144'. BREAK CIRCULATION W/ AIR AND CLEAN OUT SAND TO P.B.T.D.(5154'). SMALL AMOUNT OF GAS AND WATER W/ NO SAND. TOO H. RU SCHLUMBERGER WIRELINE SERVICES. PERFORATE POINT LOOKOUT MESA VERDE W/ 2 SPF USING 3-1/8", 0.41 DIAMETER HOLE GUNS CONTAINING PROSPECTOR CHARGES AS FOLLOWS: 5104'-5108', 5088'-5094', 5060'-5072', 5052'-5054', 5034'-5044', 5004'-5022', (52'). RD SCHLUMBERGER WIRELINE SERVICES. EXSISTING PERFORATIONS ARE AS FOLLOWS: 4955'-4961', 4967'-4970', 4974'-4993'. SION. D-\$10,000, T-\$26,000, DAY-4.

2/05/03

80# ON WELL THIS AM. RU PROTECHNICS. RU HALLIBURTON. PUMP 1000 GALLONS 15% HCL ACID. FOAMED SLICK WATER FRAC @ 76.4 BPM W/ AN AVG. WHTP OF 1574 PSI., AND A MAX. WHTP OF 2025 PSI. W/ 61,368 GALLONS WATER, 1,393,000 SCF NITROGEN, AND 110,000# 16/30 BRADY SAND. ISIP - 61 PSI., WENT ON VACUMN BEFORE 5 MINUTES. TOTAL LOAD TO RECOVER IS 1577 BBLs. RD HALLIBURTON. RD PROTECHNICS. RU SCHLUMBERGER WIRELINE SERVICES. RIH W/ 4-1/2" COMPOSITE BRIDGE PLUG AND SET @ 4950'. PERFORATE MENEFE MESA VERDE W/ 2 SPF USING 3-1/8", 0.41 DIAMETER HOLE GUNS CONTAINING PROSPECTOR CHARGES AS FOLLOWS: 4938'-4942', 4930'-4934', 4918'-4922', 4908'-4912', 4872'-4896', 4856'-4860', 4844'-4848', 4834'-4838', 4802'-4824', 4782'-4790', 4764'-4766', 4704'-4706', 4689'-4691', 4658'-4660', 4625'-4629', (94'). RD SCHLUMBERGER WIRELINE SERVICES. RU PROTECHNICS. RU HALLIBURTON. PUMP 1000 GALLONS 15% HCL ACID. FOAMED SLICK WATER FRAC @ 60.9 BPM W/ AN AVG. WHTP OF 1892 PSI., AND A MAX. WHTP OF 2244 PSI. W/ 143,448 GALLONS WATER, 1,708,000 SCF NITROGEN, AND 120,000#

16/30 BRADY SAND. ISIP - 1680 PSI., 5 MINUTES - 1498 PSI., 10 MINUTES - 1492 PSI., 15 MINUTES - 1490 PSI. TOTAL LOAD TO RECOVER IS 1399 BBLS. RD HALLIBURTON. RD PROTECHNICS. LEFT WELL FLOWING THRU 1/2" CHOKE UNTIL WELL LOG OFF. SDFN. D-\$130,000, T-\$156,000, DAY-5.

2/06/03

100# ON WELL THIS AM. PU 3-7/8" BIT, BIT SUB, AND 2-3/8" EUE J-55 TBG. TO SAND @ 4890'. BREAK CIRCULATION W/ AIR AND CLEAN OUT SAND TO TOP OF CBP @ 4950'. PU 2.5 POWER SWIVEL. BREAK CIRCULATION W/ AIR AND DRILL OUT CBP @ 4950'. LD 2.5 POWER SWIVEL. RIH AND TAG SAND @ 5064'. BREAK CIRCULATION W/ AIR AND CLEAN OUT SAND TO P.B.T.D.(5154'). LARGE AMOUNT OF GAS AND WATER W/ SAND. PUIC. SION. D-\$4000, T-\$160,000, DAY-6.

2/07/03

500# ON WELL THIS AM. BLED DOWN. RIH AND TAG SAND @ 5119'. BREAK CIRCULATION W/ AIR AND CLEAN OUT SAND TO P.B.T.D.(5154'). LARGE AMOUNT OF GAS AND WATER W/ SAND. PUIC. HOOK WELL UP TO SALES LINE FLOWING 300 MCF @ 200#. SDFN. D-\$4000, T-\$164,000, DAY-7.

2/08/03

WELL FLOWING 660 MCF @ 210# THIS AM. RIG DAY OFF.

2/09/03

WELL FLOWING 675 MCF @ 170# THIS AM. RIG DAY OFF.

2/10/03

WELL FLOWING 670 MCF @ 170# THIS AM. BLED DOWN. RIH AND TAG SAND @ 5139'. BREAK CIRCULATION W/ AIR AND CLEAN OUT SAND TO P.B.T.D.(5154'). LARGE AMOUNT OF GAS AND WATER W/ SAND. PUIC. HOOK WELL UP TO SALES LINE FLOWING 400 MCF @ 170#. SDFN. D-\$4000, T-\$168,000, DAY-8.

2/11/03

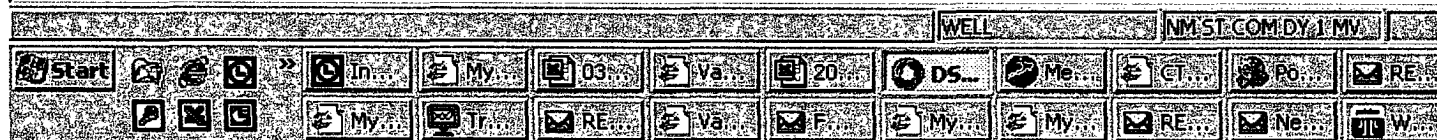
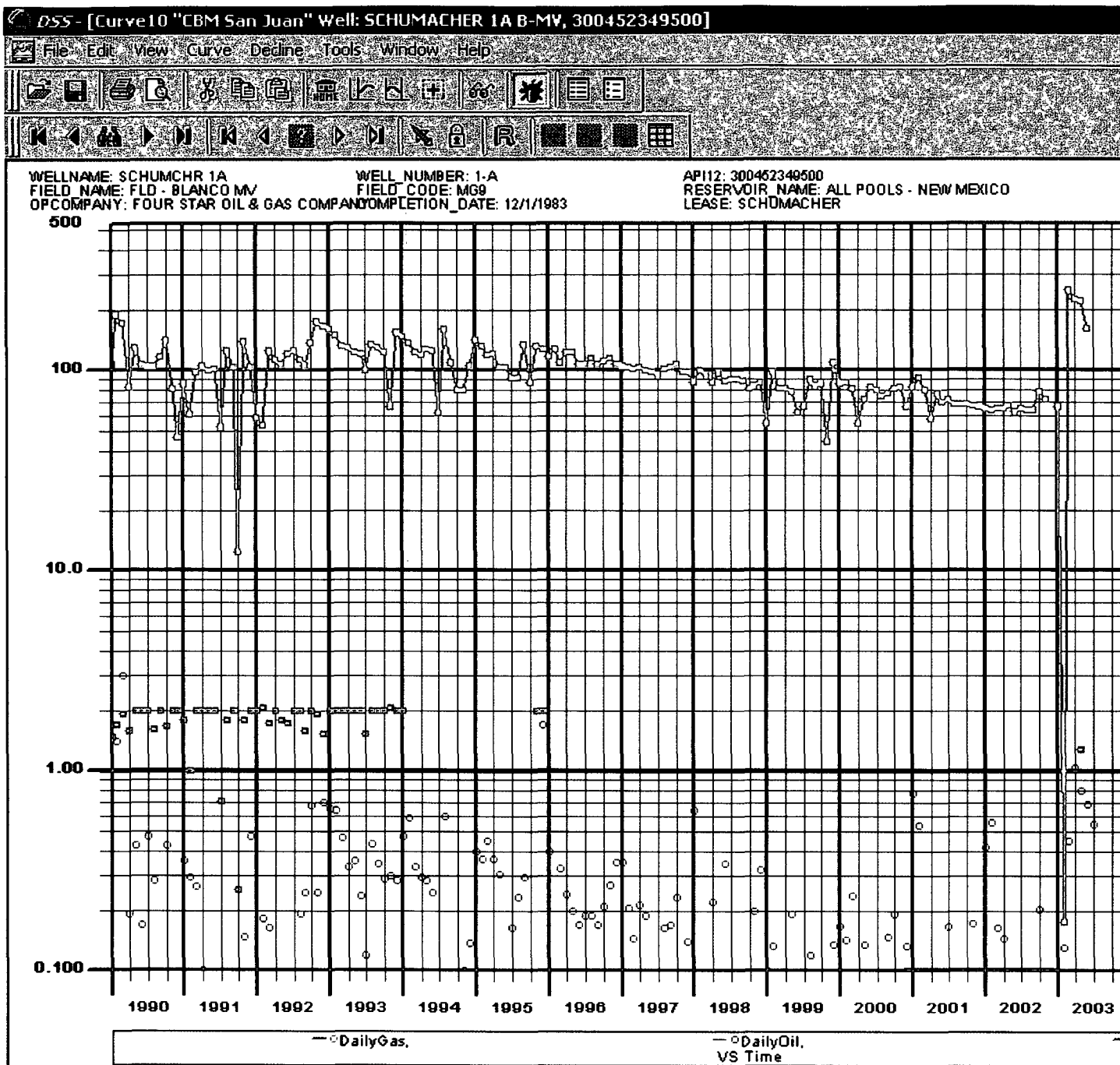
WELL FLOWING 665 MCF @ 170# THIS AM. BLED DOWN. RIH AND TAG SAND @ 5144'. BREAK CIRCULATION W/ AIR AND CLEAN OUT SAND TO P.B.T.D.(5154'). LARGE AMOUNT OF GAS AND WATER W/ SAND. PUIC. HOOK WELL UP TO SALES LINE FLOWING 400 MCF @ 170#. SDFN. D-\$4000, T-\$172,000, DAY-8.

2/12/03

WELL FLOWING 600 MCF @ 200# THIS AM. BLED DOWN. RIH AND TAG SAND @ 5149'. BREAK CIRCULATION W/ AIR AND CLEAN OUT SAND TO P.B.T.D.(5154'). LARGE AMOUNT OF GAS AND WATER W/ NO SAND. PUIC. HOOK WELL UP TO SALES LINE FLOWING 500 MCF @ 200#. SDFN. D-\$4000, T-\$176,000, DAY-9.

2/13/03

WELL FLOWING 600 MCF @ 200# THIS AM. BLED DOWN. RIH AND TAG NO SAND. TOOH AND LD 158 JTS. 2-3/8" EUE J-55 JUNK TBG.(4961') W/ BIT ON FLOAT. RIH W/ PRODUCTION STRING AS FOLLOWS: 163 JTS. 2-3/8" EUE J-55 NEW TBG.(5019'), 2-3/8" SEATING NIPPLE, 2-3/8" KNOTCH COLLAR. EOT IS 5033'. ND BOP. NU WELLHEAD. HOOK WELL UP TO SALES LINE FLOWING 400 MCF @ 200#. RDMO. D-\$4000, T-\$180,000, DAY-10. FINAL REPORT.



David Meinert
 Petroleum Engineer
 ChevronTexaco
 11111 S. Wilcrest
 Houston, TX 77099
 tel (281)-561-4758
 fax (281)-582-5263
 mail dpme@chevrontexaco.com

Schumacher #1A**API #30-045-23495****Blanco Meseverde Field San Juan County New Mexico**

	Monthly Gas Production	Monthly Cond. Production
05/2003	6,896	24.88
04/2003	6,779	31.30
03/2003	7,800	13.88
02/2003	5	3.66
01/2003	2,055	0.00
12/2002	0	0.00
11/2002	2,150	0.00
10/2002	2,441	6.33
09/2002	1,925	0.73
08/2002	1,968	0.73
07/2002	2,029	0.73
06/2002	1,881	0.73
05/2002	2,075	2.93
04/2002	1,966	4.39
03/2002	2,022	5.15
02/2002	1,773	15.63
01/2002	1,999	12.88
12/2001	2,060	0.00