

UNITED STATES
DEPARTMENT OF THE INTERIOR
BUREAU OF LAND MANAGEMENT

RECEIVED

MAR 02 2009

Sundry Notices and Reports on Wells

Bureau of Land Management
Farmington Field Office

5. Lease Number
NM-03999
6. If Indian, All. or
Tribe Name
7. Unit Agreement Name
8. Well Name & Number
Grambling 4
9. API Well No.
30-045-13085
10. Field and Pool
Pictured Cliff
11. County and State
San Juan Co., NM

1. Type of Well
GAS

2. Name of Operator
BURLINGTON
RESOURCES OIL & GAS COMPANY LP

3. Address & Phone No. of Operator

PO Box 4289, Farmington, NM 87499 (505) 326-9700

4. Location of Well, Footage, Sec., T, R, M

Unit C (NENW), 1150' FNL & 1500' FWL, Section 22, T29N, R9W, NMPM

12. CHECK APPROPRIATE BOX TO INDICATE NATURE OF NOTICE, REPORT, OTHER DATA

Type of Submission

☒ Notice of Intent

☒ Subsequent Report

☐ Final Abandonment

Type of Action

☐ Abandonment

☐ Recompletion

☐ Plugging

☐ Casing Repair

☐ Altering Casing

☐ Change of Plans

☐ New Construction

☐ Non-Routine Fracturing

☐ Water Shut off

☐ Conversion to Injection

☒ Other - Bradenhead Repair

13. Describe Proposed or Completed Operations

RCVD MAR 5 '09
OIL CONS. DIV.
DIST. 3

See attached for detail

14. I hereby certify that the foregoing is true and correct.

Signed Tracey N. Monroe Tracey N. Monroe Title Staff Regulatory Technician Date 3/2/09

(This space for Federal or State Office use)

APPROVED BY _____ Title _____

CONDITION OF APPROVAL, if any:

Title 18 U.S.C. Section 1001, makes it a crime for any person knowingly and willfully to make any department or agency of the United States any false, fictitious or fraudulent statements or representations as to any matter within its jurisdiction.

DATE RECEIVED FOR RECORD
MAR 04 2009

MAR 04 2009

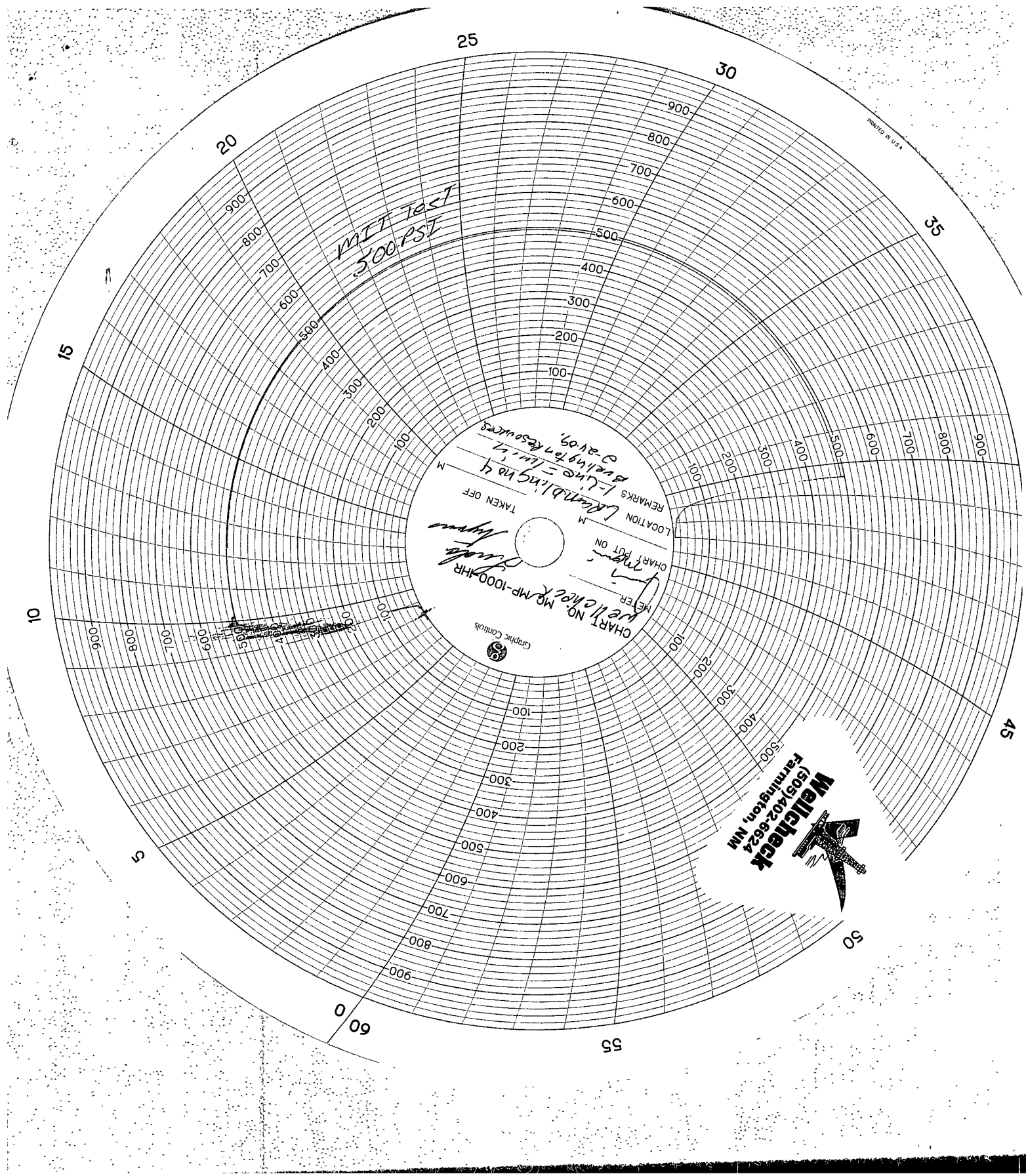
FARMINGTON FIELD OFFICE
BY _____

NMOCD

Grambling #4

API# 3004513085

2/16/09 MIRU A-Plus. RU Cementers. Ck pressures csg 38#, BH 50#, blow down well. ND WH, NU BOP. RU floor 7 tbg equip. RU WL w/2 1/4" gauge ring & RIH to 2220'. POOH. RIH w/CBP & set @ 2208'. POOH, RD WL. Load csg w/2% KCL from the top & wk air pockets out. PT csg to 500# 30/min – chart. Test witnessed by Monica Kuehling (OCD) took chart. RU Blue Jet WL. Run CBL from 2208' to surface w/500# pressure on csg. Found TOC @ 1520' w/stingers to 925'. RD WL. **2/17/09 Notified Jim Lovato (BLM) & Kelly Roberts (OCD) of request to squeeze. Request to squeeze @ 1295' & circ to surface. Pump 500 sx Cement w/ 100% excess. Verbal approval to proceed by Jim Lovato and Kelly Roberts.** 2/17/09 RU Blue Jet WL. RIH & shot 4 -1/4" Squeeze holes @ 1295'. RU A+ WL. RIH & set cement retainer @ 1248'. POOH & RD WL. Pumped 200 sx Class B Cement, lost Circ out BH. Displaced w/1 1/2 bbls & Pressured to 1700#. Sting out of retainer & reversed clean w/8 bbls Reversed out approx 1/2 bbls Cement. Monica Kuehling (OCD) on location as witness. TOH & LD stinger.. 2/18/09 Ck WH pressures csg 0#, BH 5#. Blow well down. Leave BH open for 30 min. Close BH & monitor. No pressure. **2/18/09 Notified Jim Lovato (BLM) & Kelly Roberts (OC) of squeeze results, PT BH 30/min w/0 pressure. No remediation required at this time.** TIH w/2 1/4" junk mill & tag Cement retainer @ 1248'. RD tbg equip. RU Drilling equip. D/O cement retainer & cement. Fell out of cement @ 1298', Ck for stringers To 1375'. Circ clean. RD drilling equip. RU tbg equip. Attempt to PT csg 500# - failed test. Pressure dropped to 325# in 15/min. Ck Pressure on BH after 7 hr shut in – 0#. 2/19/09 RU Wellcheck test trk. PT csg to 500# 30/min – test failed, dropped to 260# in 30/min. TOH w/tbg. PU packer, TIH to 1248'. PT csg & isolate csg leak @ perfs @ 1295'. **2/19/09 Notified Jim Lovato (BLM) & Kelly Roberts (OCD) of csg leak. Request to set packer 25' – 50' below 1245' – 1265' w/balance plug & hesitate squeeze & hold pressure Over week-end, then drill out plug & PT. Verbal approval to proceed by BLM & OCD.** TOH & LD packer. Pump balance plug For hesitation squeeze w/10 sx Class B Cement from 1311' – 945'. TOH to 717'. Reverse circ w/6 bbls. No cement returned. Start Hesitation squeeze w/600# pressure. Dropped to 300# in 30/min. Pump up to 600#, dropped to 450# in 30 min. Pump up to 600# dropped To 560# in 30 min. Pumped up to 600# no pressure lost in 30/min. SIW w/600# on csg, squeezed 4 sx outside csg. TOC @ 1093'. 2/23/09 Ck WH pressures csg 18#, BH 0#. Open well, left 600# on csg after squeeze. Pressure dropped 18# over week-end. PU junk mill, TIH & tag TOC @ 1127'. Pu swivel & drill cement to 1187'. Circ clean. Continue drilling cement, fell out @ 1315'. TIH w/3 jts & ck for Stingers. 2/24/09 PT csg to 500# 30/min & charted. Lost 5# in 30 min. TOH w/junk mill. PU scraper & TIH to 1374'. TOH & LD Scraper. PU junk mill & TIH w/unloading hole w/air @ 933' & 1500'. Tagged @ 1610' & plugged mill. TOH. TIH to 1568'. Blow dry w/air. Tag @ 1610'. 2/25/09 TOH unplug mill. TIH to 1700'. C/O to CBP @ 2208'. D/O CBP & C/O to PBTD @ 2352'. TOH. 2/26/09 LD mill. RD Drilling & tbg equipment. RD rig floor. ND BOP, NU WH. RD rig & cement equipment



Wellcheck
(505) 402-6624
Farmington, NM