

UNITED STATES
DEPARTMENT OF INTERIOR
BUREAU OF LAND MANAGEMENT

RECEIVED

FEB 05 2009

FORM APPROVED
Budget Bureau No. 1004-0135

SUNDRY NOTICE AND REPORTS ON WELLS

Do not use this form for proposals to drill or to deepen or reentry to a different reservoir. Use "APPLICATION TO DRILL" for permit for such proposals

Bureau of Land Management
Farmington Field Office

Lease Designation and Serial No.
NM-03189

6. If Indian, Allottee or Tribe Name

SUBMIT IN TRIPLICATE

7 If Unit or CA, Agreement Designation
COX CANYON UNIT

1. Type of Well
Oil Well ☒ Gas Well ☐ Other ☐

8. Well Name and No.
COX CANYON #9

2. Name of Operator
WILLIAMS PRODUCTION COMPANY

9. API Well No.
30-045-11356

3. Address and Telephone No.
PO BOX 3102 MS 25-4, TULSA, OK 74101 (918) 573-3046

10. Field and Pool, or Exploratory Area
BLANCO MV

4. Location of Well (Footage, Sec., T., R., M., or Survey Description)
1850' FNL, 990' FEL, SEC 20, T32N, R11W

11. County or Parish, State
SAN JUAN, NM

CHECK APPROPRIATE BOX(s) TO INDICATE NATURE OF NOTICE, REPORT, OR OTHER DATA

TYPE OF SUBMISSION

TYPE OF ACTION

Notice of Intent

☒ Subsequent Report

Final Abandonment

Abandonment

Recompletion

Plugging Back

Casing Repair

Altering Casing

☒ Other TUBING REPAIR

Change of Plans

New Construction

Non-Routine Fracturing

Water Shut-Off

Conversion to Injection

Dispose Water

(Note: Report results of multiple completion on Well Completion or Recompletion Report and Log form.)

13. Describe Proposed or Completed Operations (Clearly state all pertinent details, and give pertinent dates, including estimated date of starting any proposed work. If well is directionally drilled, give subsurface locations and measured and true vertical depths for all markers and zones pertinent to this work.)*

01-16-2009

MIRU, unable to set up no rig anchors in place & the location had to be modified for equip to be set up for work. Well was secured & SDFN.

RCVD MAR 9 '09
OIL CONS. DIV.

01-17-2009

Anchors were set so we were able to set up loc for next assignment. Secured well & loc SDFN.

DIST. 3

01-19-2009

160# csg & tbg, NU w/ FB tank. Bled down to FB tank & kill w/ 2% KCL. ND w/ x-mas tree, sent to Antelope for inspection. NU w/ BOP, function test same. NU w/ work platform. Un-land tbg, TOH w/ tbg, tbg parted 20 jts down = 633', parted in body 2' above pin. Tbg eaten up inside & around pins w/ corrosion. Good clean break good fishing neck looking up. Ordered out backhoe, bladed area to get empty float & replacement tbg float into well site. MI & spotted empty float. Singled down w/ old 23/8" prod string tbg from derrick. Made well safe for night. Tubascope backed up, unable to get replacement tbg loaded @ Tubascope, will get replacement tbg in morning.

Continued on attached sheets:

14. I hereby certify that the foregoing is true and correct

Signed

Rachel Lipperd

Title Engineering Technician II

Date February 2, 2009

(This space for Federal or State office use)

ACCEPTED FOR RECORD

Approved by

Title

Date

MAR 05 2009

Conditions of approval, if any:

FARMINGTON FIELD OFFICE

Title 18 U.S.C. Section 1001, makes it a crime for any person knowingly and willfully to make to any department or agency of the United States any false, fictitious or fraudulent statements or representations as to any matter within its jurisdiction.

NMOC D 26

01-20-2009

Move in & spot float & new 2 3/8" tbg. Csg = 160 psi, BD to FB tank & killed w/ min KCL. MU 4-1 1/16" OS w/ 2-1 9/32" basket grapple, 4 3/4" bumper sub. TIH w/ fish assembly on new 2 3/8" PS tbg, meas & PU in sgls. Tagged top of fish @ 650', worked over fish top, pulled on fish & parted @ 20,000#. TOH w/ fish assembly & fish. Rec 40 jts fish = 1280', parted in pin (corrosion), left a collar looking up. MU 4-1 1/16" OS w/ 3-1/16" BG, 4 3/4" jars & TIH w/ fish assembly on 2 3/8" tbg, meas & PU in sgls. Tag fish top @ 1923'. Engaged fish, worked fish up hole 23' stopped solid unable to move up or down hole. Top of fish @ 1900' worked stuck pipe @ 55,000# to no avail. Winterized pump & rig equip, MSFN, free point set up for morning.

01-21-2009

Csg = 160#, BD to FB tank. MIRU w/ WL Spec equip. TIH w/ 1 5/8" spud bar & jars. Stop solid @ 5350'. TOH w/ spud bar assembly. TIH w/ 1.44" free point tool, 2 3/8" PS tbg, 100% free to 4760'. Stuck @ 0% free @ 4785'. Loc tbg collar @ 4779', TIH w/ FP tools, TIH w/ 1.6875" chem cutter. Made chem cut @ 4760' leaving 1119' tbg below chem cut. Cut 19' above tbg collar. TOH w/ fish assembly & fish, meas & LD fish in sgls. Rec 91 jts & piece today = 2887'. Rec 151 jts & piece = 4780' to-date. MU 4 - 1 1/16" OS w/ 2 3/8" basket grapple, 3 1/8" bumper sub, 3 1/8" jars, 4 x 3 1/8" DC's, 3 1/8" accelerator, ripping in hole w/ fishing assembly on 2 3/8" PS tbg, hung off @ 3500'. Winterized pump & rig equip, MSFN.

01-22-2009

Csg = 165#, BD to FB tank, kill w/ KCL. Comp TIH w/ fish assembly, meas & pick tbg up in sgls. Tag fish @ 4766'. Sgl out w/ drlg line to 4 line string up w/ line wt indicator. Engage fish @ 4766'. Jarred on 23/8" fish @ 60,000#. Got fish moving up hole, work BS & jars working fish up & down hole. Worked up hole 90', fish started moving freely. Dbl up drlg line to 2 line string up. TOH w/ fish assembly & fish. LD fish in sgls, meas. Rec all of tbg, total pipe rec 186 jts, 4' perf pup jt, notched collar, no seat nipple in string. Left wireline tools & wireline in hole. Broke down & load out fish tools. MU 4 3/4" 5 bladed - concave junk mill, 3 1/8" jars, 4 x 3 1/8" DC's. TIH w/ mill assembly on 2 3/8" PS tbg. Mill assembly stopped @ liner top. Unable to work into liner, maybe wireline tools & wireline lying across liner top. TOH w/ tbg & mill assembly, tbg hanging up coming out of hole. Rec large ball of slickline wire wrapped around mill & jars. Cut wire from tools. MU & TIH w/ tbg & mill assy. Hung off tbg @ 3200', MSFN & winterized pump & rig equip.

01-23-2009

Csg = 165#, BD to FB tank, kill w/ min 2% kcl. TDH w/ mill assembly & work into liner top. NU w/ air pack, broke circ w/ 10 bph A/S/ CI in 30 min @ 350#, no water recovered (dry at liner top). TDH from liner top, mill stopped solid @ 4270', stuck pipe, work jars at 65,000#, got pipe moving up hole, apparently wireline nest was on top of liner and fell in on top of mill assembly. TUH & hung off 10' below liner top. Rotated pipe 10 turns attempting to wrap wireline around mill assembly. TOH w/ tbg & mill assembly, mill assembly drug coming out of liner. Did not recover any wireline on mill assembly, MSFN & winterized pump & rig equip.

01-26-2009

Csg = 165#, BD to FB tank & kill w/ kcl. Made up 43/4" WL spear, 31/8" BS, 31/8" jars, 4 x 31/8" DCs. TIH w/ WL spear assembly on 23/8" PS tbg. Stop solid @ 4270'. Worked & rotated spear. Sticking and pulling hard, dragging up hole. TOH w/ tbg & WL spear assembly. Rec large ball of wireline, cut wireline from spear. TIH w/ tbg & spear assembly. Picked up replacement tbg in sgls - meas same. Spear stopped solid at 5888'. Rotated & worked spear. Unable to rotate seat at 5888', may be on top of tools. TOH w/ tbg & spear assembly. No wireline rec. Wellbore clean to 14' below bottom perforation. TIH w/ DCs. TOH w/ DCs - laid down in sgls. Broke down and loaded out with fishing tools, MSFN & winterized pump & rig equip.

01-27-2009

Csg = 165#, BD to FB tank. Killed w/ min kcl. Made up notched collar, 4' x 23/8" pup jt, expendable check, 1 jt x 23/8", 1.78" F-Nipple. Tripped in hole with same on 23/8" PS tbg. Tagged fish at 5888'. NU w/ air pack. Broke circ w/ 10 BPH A/S/CI in 35 min @ 420#. Disp 20 bbls form wtr w/ air. Circ 90 min w/ no sand returns. Made soap sweep. ND w/ AP. ND w/ work platform & BOP. NU w/ repaired xmas tree. NU w/ Antelope equip. Press test WH - Tbg hgr & xmas tree @ 2000#, solid test. ND w/ Antelope equip. NU w/ AP & pump ahead w/ 3 bbls kcl. Drop ball & pump off exp check @ 450#. Circ & rec load water. Circ w/ air - blew wellbore dry. ND w/ AP. ND w/ circ pump and flowback tank. Load out rig tools. Laid down w/ rig mast. Cleaned loc. Ret well to prod, made ready to move R&E to Cox Canyon #7C in the morning.

COX CANYON UNIT COM #9 BLANCO MESAVERDE

Location:

1,850' FNL & 990' FWL
Section 20, T32N, R11W
San Juan, NM

Elevation: 6,703' GR

API #: 30-045-11356

Spud date: 08/25/56

Completed: 10/30/56

1ST Delivery: 00/00/00

| Top | Depth |
|-----------------|-------|
| Fruitland Coal | 2930' |
| Pictured Cliffs | 3358' |
| Lewis | 3560' |
| CliffHouse | 5204' |
| Menefee | 5299' |
| Point Lookout | 5665' |

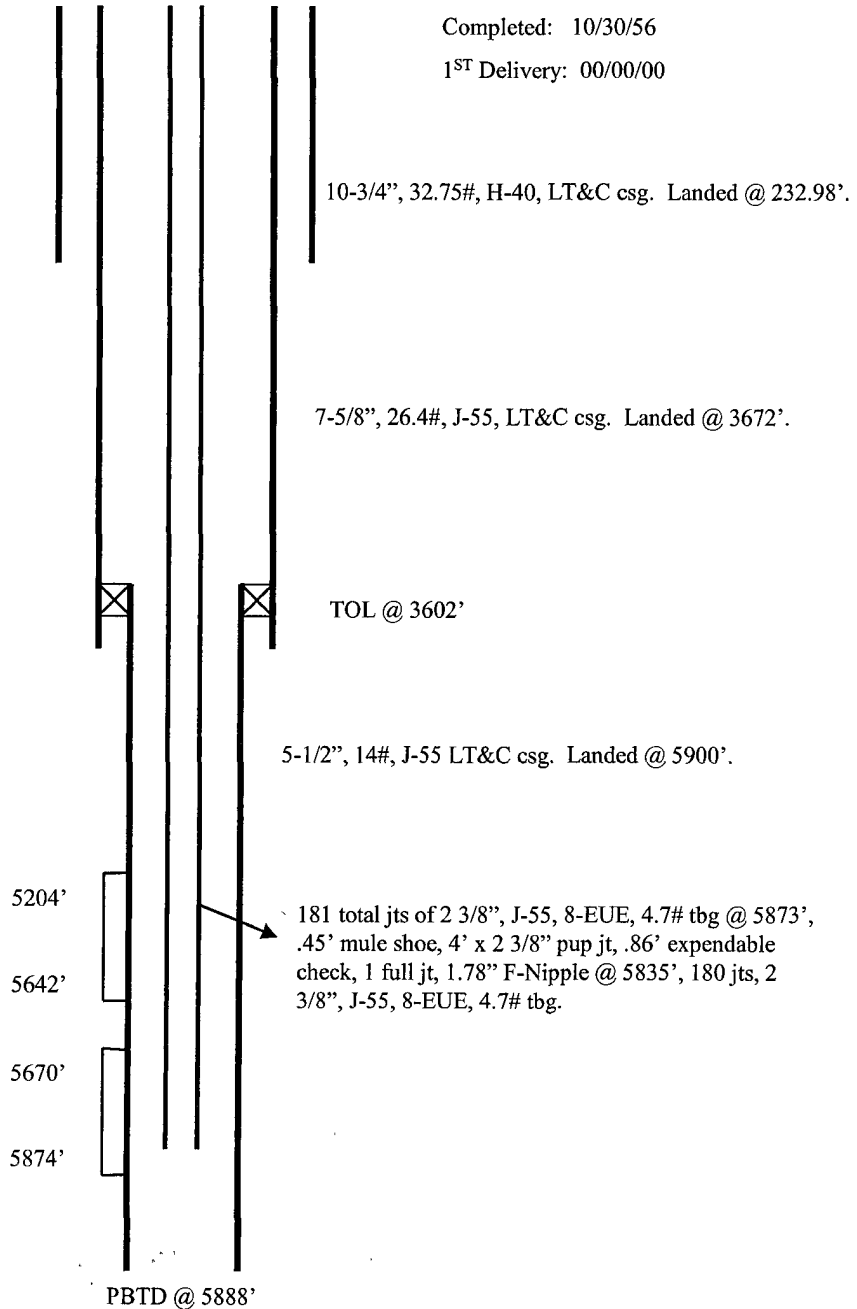
STIMULATION

CliffHouse/Menefee: 5204' - 5642'

Frac'd with 79,800 gals gelled water

Point Lookout: 5670' - 5874'

Frac'd with 67,000 gel water.



| Hole Size | Casing | Cement |
|-----------|-----------------|---------|
| 15" | 10-3/4", 32.75# | 200 sxs |
| 9-7/8" | 7-5/8", 26.4# | 150 sxs |
| 6-3/4" | 5-1/2", 14# | 150 sxs |