

District I  
1625 N French Dr., Hobbs, NM 88240  
District II  
1301 W Grand Avenue, Artesia, NM 88210  
District III  
1000 Rio Brazos Rd., Aztec, NM 87410  
District IV  
1220 S. St. Francis Dr., Santa Fe, NM 87505

" As Drilled Plat "

State of New Mexico  
Energy, Minerals & Natural Resources Department  
OIL CONSERVATION DIVISION  
1220 South St. Francis Dr.  
Santa Fe, NM 87505

Form C-102  
Revised October 12, 2005  
Submit to Appropriate District Office  
State Lease - 7 Copies  
Fee Lease - 3 Copies

☐ AMENDED REPORT

WELL LOCATION AND ACREAGE DEDICATION PLAT

1 API Number 30-045-34810	2 Pool Code 71599/72319	3 Pool Name BASIN DAKOTA / BLANCO MESAVERDE
4 Property Code 7427	5 Property Name RIDDLE B	
7 OGRID No 14538	8 Operator Name BURLINGTON RESOURCES OIL AND GAS COMPANY LP.	6 Well Number 11N 9 Elevation 6302

10 SURFACE LOCATION

UL or lot no. F	Section 23	Township 30-N	Range 10-W	Lot Idn	Feet from the 1515	North/South line NORTH	Feet from the 1430	East/West line WEST	County SAN JUAN
--------------------	---------------	------------------	---------------	---------	-----------------------	---------------------------	-----------------------	------------------------	--------------------

11 Bottom Hole Location If Different From Surface

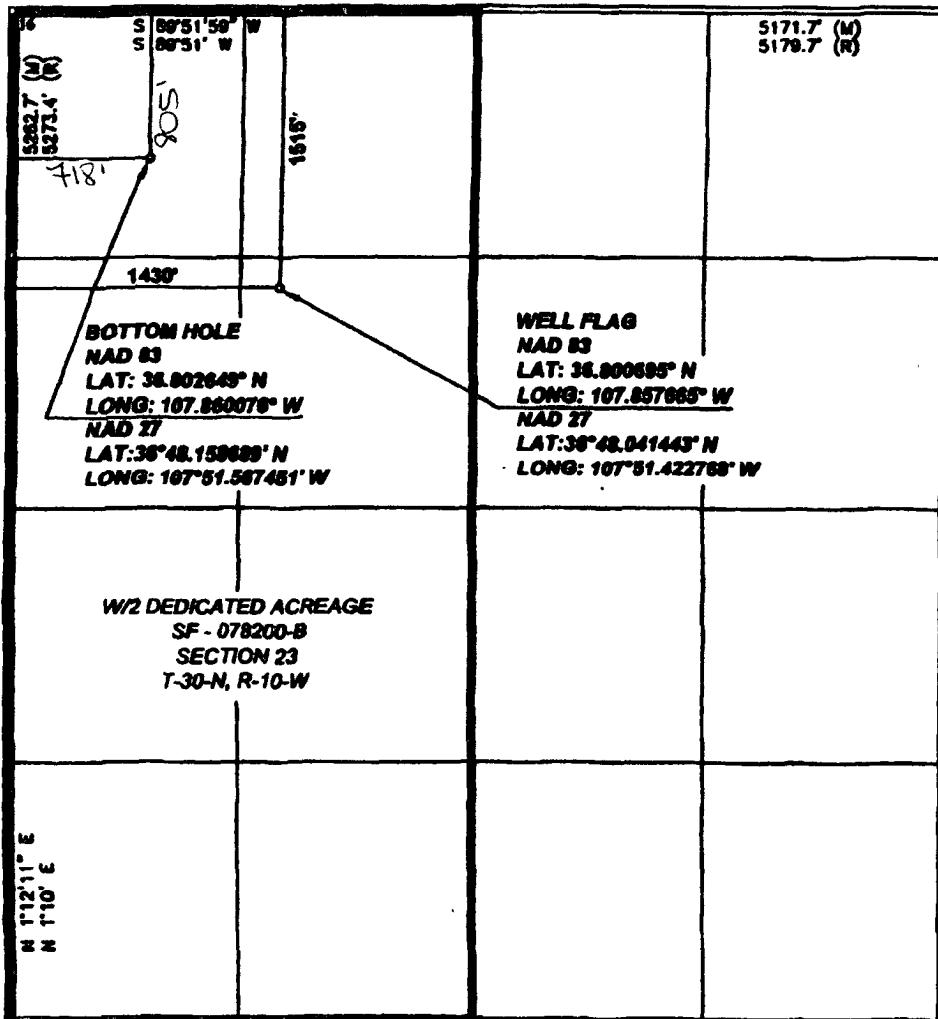
UL or lot no. D	Section 23	Township 30-N	Range 10-W	Lot Idn (4)	Feet from the 805'	North/South line NORTH	Feet from the 718'	East/West line WEST	County SAN JUAN
--------------------	---------------	------------------	---------------	----------------	-----------------------	---------------------------	-----------------------	------------------------	--------------------

12 Dedicated Acres 315.56	13 Joint or Infill	14 Consolidation Code	15 Order No.
------------------------------	--------------------	-----------------------	--------------

NO ALLOWABLE WILL BE ASSIGNED TO THIS COMPLETION UNTIL ALL INTERESTS HAVE BEEN CONSOLIDATED OR A NON-STANDARD UNIT HAS BEEN APPROVED BY THE DIVISION

RCVD MAR 18 '09  
OIL CONSERVATION DIVISION

DIST. 3



17 OPERATOR CERTIFICATION

I hereby certify that the information contained herein is true and complete to the best of my knowledge and belief, and that this organization either owns a working interest or unleased mineral interest in the land including the proposed bottom hole location or has a right to drill this well at this location pursuant to a contract with an owner of such a mineral or working interest, or to a voluntary pooling agreement or a compulsory pooling order heretofore entered by this division.

Signature: Sasha Neumann Date: 3-4-09  
Printed Name: SASHA NEUMANN

18 SURVEYOR CERTIFICATION

I hereby certify that the well location shown on this plat was plotted from field notes of actual surveys made by me or under my supervision, and that the same is true and correct to the best of my belief.

Date of Survey: 2-22-08  
Signature and Seal of Professional Surveyor:

Certificate Number: 11393