

District I
1625 N. French Dr., Hobbs, NM 88240
District II
1301 W. Grand Avenue, Artesia, NM 88210
District III
1000 Rio Brazos Road, Aztec, NM 87410
District IV
1220 S. St. Francis Dr., Santa Fe, NM 87505

State of New Mexico
Energy Minerals and Natural Resources
Department
Oil Conservation Division
1220 South St. Francis Dr.
Santa Fe, NM 87505

Form C-144 CLEZ
July 21, 2008

For closed-loop systems that only use above ground steel tanks or haul-off bins and propose to implement waste removal for closure, submit to the appropriate NMOC District Office.

3314 **Closed-Loop System Permit or Closure Plan Application**

(that only use above ground steel tanks or haul-off bins and propose to implement waste removal for closure)

Type of action: ☒ Permit ☐ Closure

Instructions: Please submit one application (Form C-144 CLEZ) per individual closed-loop system request. For any application request other than for a closed-loop system that only use above ground steel tanks or haul-off bins and propose to implement waste removal for closure, please submit a Form C-144.

Please be advised that approval of this request does not relieve the operator of liability should operations result in pollution of surface water, ground water or the environment. Nor does approval relieve the operator of its responsibility to comply with any other applicable governmental authority's rules, regulations or ordinances.

1. Operator: West Largo Corp OGRID #: 37197 RCVD MAR 19 '09
Address: 8801 S. Yale, Suite 240, Tulsa, OK, 74137-3535 OIL CONS. DIV.
Facility or well name: State Com 32 No. 2 DIST. 3
API Number: 30045-34927 OCD Permit Number: _____
U/L or Qtr/Qtr D Section 32 Township 29N Range 9W County: San Juan
Center of Proposed Design: Latitude 36.68738° N Longitude 107.81209° W NAD: ☐ 1927 ☒ 1983
Surface Owner: ☐ Federal ☒ State ☐ Private ☐ Tribal Trust or Indian Allotment

2. ☒ **Closed-loop System:** Subsection H of 19.15.17.11 NMAC
Operation: ☒ Drilling a new well ☐ Workover or Drilling (Applies to activities which require prior approval of a permit or notice of intent) ☐ P&A
☐ Above Ground Steel Tanks or ☐ Haul-off Bins

3. **Signs:** Subsection C of 19.15.17.11 NMAC
☐ 12"x 24", 2" lettering, providing Operator's name, site location, and emergency telephone numbers
☒ Signed in compliance with 19.15.3.103 NMAC

4. **Closed-loop Systems Permit Application Attachment Checklist:** Subsection B of 19.15.17.9 NMAC
Instructions: Each of the following items must be attached to the application. Please indicate, by a check mark in the box, that the documents are attached.
☒ Design Plan - based upon the appropriate requirements of 19.15.17.11 NMAC
☒ Operating and Maintenance Plan - based upon the appropriate requirements of 19.15.17.12 NMAC
☒ Closure Plan (Please complete Box 5) - based upon the appropriate requirements of Subsection C of 19.15.17.9 NMAC and 19.15.17.13 NMAC
☐ Previously Approved Design (attach copy of design) API Number: _____
☐ Previously Approved Operating and Maintenance Plan API Number: _____

5. **Waste Removal Closure For Closed-loop Systems That Utilize Above Ground Steel Tanks or Haul-off Bins Only:** (19.15.17.13.D NMAC)
Instructions: Please identify the facility or facilities for the disposal of liquids, drilling fluids and drill cuttings. Use attachment if more than two facilities are required.

Disposal Facility Name: Liquids: Basin Disposal Disposal Facility Permit Number: 5
Disposal Facility Name: Solids: JFJ Landfarm Disposal Facility Permit Number: 10

Will any of the proposed closed-loop system operations and associated activities occur on or in areas that will not be used for future service and operations?
☐ Yes (If yes, please provide the information below) ☒ No

Required for impacted areas which will not be used for future service and operations:

- ☐ Soil Backfill and Cover Design Specifications - based upon the appropriate requirements of Subsection H of 19.15.17.13 NMAC
☐ Re-vegetation Plan - based upon the appropriate requirements of Subsection I of 19.15.17.13 NMAC
☐ Site Reclamation Plan - based upon the appropriate requirements of Subsection G of 19.15.17.13 NMAC

6. **Operator Application Certification:**

I hereby certify that the information submitted with this application is true, accurate and complete to the best of my knowledge and belief.

Name (Print): Robert E. Fielder Title: Agent

Signature: Robert E. Fielder Date: March 13, 2009

e-mail address: pmci@advantas.net Telephone: 505-320-1435

7. **OCD Approval:** ☒ Permit Application (including closure plan) ☐ Closure Plan (only)

OCD Representative Signature: Brandon Paul Approval Date: 3-30-09

Title: Enviro/spec OCD Permit Number: _____

8. **Closure Report (required within 60 days of closure completion):** Subsection K of 19.15.17.13 NMAC

Instructions: Operators are required to obtain an approved closure plan prior to implementing any closure activities and submitting the closure report. The closure report is required to be submitted to the division within 60 days of the completion of the closure activities. Please do not complete this section of the form until an approved closure plan has been obtained and the closure activities have been completed.

☐ Closure Completion Date: _____

9. **Closure Report Regarding Waste Removal Closure For Closed-loop Systems That Utilize Above Ground Steel Tanks or Haul-off Bins Only:**

Instructions: Please indentify the facility or facilities for where the liquids, drilling fluids and drill cuttings were disposed. Use attachment if more than two facilities were utilized.

Disposal Facility Name: _____ Disposal Facility Permit Number: _____

Disposal Facility Name: _____ Disposal Facility Permit Number: _____

Were the closed-loop system operations and associated activities performed on or in areas that *will not* be used for future service and operations?

☐ Yes (If yes, please demonstrate compliance to the items below) ☐ No

Required for impacted areas which will not be used for future service and operations:

☐ Site Reclamation (Photo Documentation)

☐ Soil Backfilling and Cover Installation

☐ Re-vegetation Application Rates and Seeding Technique

10. **Operator Closure Certification:**

I hereby certify that the information and attachments submitted with this closure report is true, accurate and complete to the best of my knowledge and belief. I also certify that the closure complies with all applicable closure requirements and conditions specified in the approved closure plan.

Name (Print): _____ Title: _____

Signature: _____ Date: _____

e-mail address: _____ Telephone: _____

Closed Loop

Operating and Maintenance Procedures

West Largo Corp. (WLC)

State Com 32 No. 2

- I. Design and Construction Specifications
 - a. Prior to the start of location leveling, WLC will remove one to three inches of topsoil from the pad area and stockpile on the location perimeter, as shown on the attached Wellsite Layout, for future reclamation during final reclamation.
 - b. In lieu of a pit sign, WLC will install and maintain a sign on the wellsite in accordance with the provisions of Rule 103.
 - c. The proposed depression and steel tank will be fenced on all sides with a four foot hogwire fence installed on steel tee posts since this location is over 1000 feet from the nearest residential building. This fence will be maintained to insure no access by livestock or wildlife as long as there is fluid in the steel tank.
 - d. After location leveling is complete, WLC will construct a 45 ft. long X 12 ft. wide X 3 ft. deep depression with vertical walls to set the steel tank in. This is necessary due to the limited height (3 ft. \pm above GL) of the flow nipple of the D & D Services rig we propose to use for this operation. The soil removed for this excavation will be stockpiled on the pad surface between the depression and corner 5, outside the fence perimeter. A one foot tall berm will be constructed around the depression to prevent run on from entering the depression.
 - e. No drying pads or sumps will be used in conjunction with this closed loop system.
- II. Operational Plan
 - a. WLC will operate and maintain the closed loop system to contain the liquids and solids associated with the drilling phase of this operation, prevent contamination of the fresh water supply and protect the public health and the environment.
 - b. WLC will not dispose of or store any hazardous material in this pit. All workover and completion fluids associated with flow back or circulation during these operations will be stored in a flow back tank on location.
 - c. WLC will monitor the condition of the installed steel tank from the date it is installed until the drilling operation is completed to insure there are no leaks from the steel tank to the depression. Any leak noted will be repaired and reported within 48 hours or in accordance with applicable regulations and procedures in effect at the time
 - d. One foot of freeboard will be maintained in the steel tank while drilling operations are in progress during the day. The liquid level will be pulled down to the two feet of freeboard each evening, before drilling operations are suspended for the night, by transferring fluid to the circulating tank. WLC will not discharge any drilling fluids or solids to the depression.

- e. Solids will be removed by vacuum truck from the steel tank as needed during the drilling operation. These solids will be hauled to JFJ Landfarm, NM Permit # 10 for disposal.
- f. WLC will remove all free liquid from the steel tank and haul it to the circulating fluid tank for the next well or to the Basin Disposal facility, NM Permit # 5, if another well is not planned, immediately upon cessation of the drilling operation. All fluids associated with the drilling or completion operations that are accumulated and stored in the flow back tank will be removed within 30 days of cessation of these operations and hauled to the Basin Disposal Facility. Accumulated solids in the steel tank and flowback tank will be removed by vacuum truck and hauled to the JFJ Landfarm as soon as the liquids are removed.
- g. The pit will be maintained free of any solid refuse. This will be stored in a trash basket on the location.

III. Closure Plan

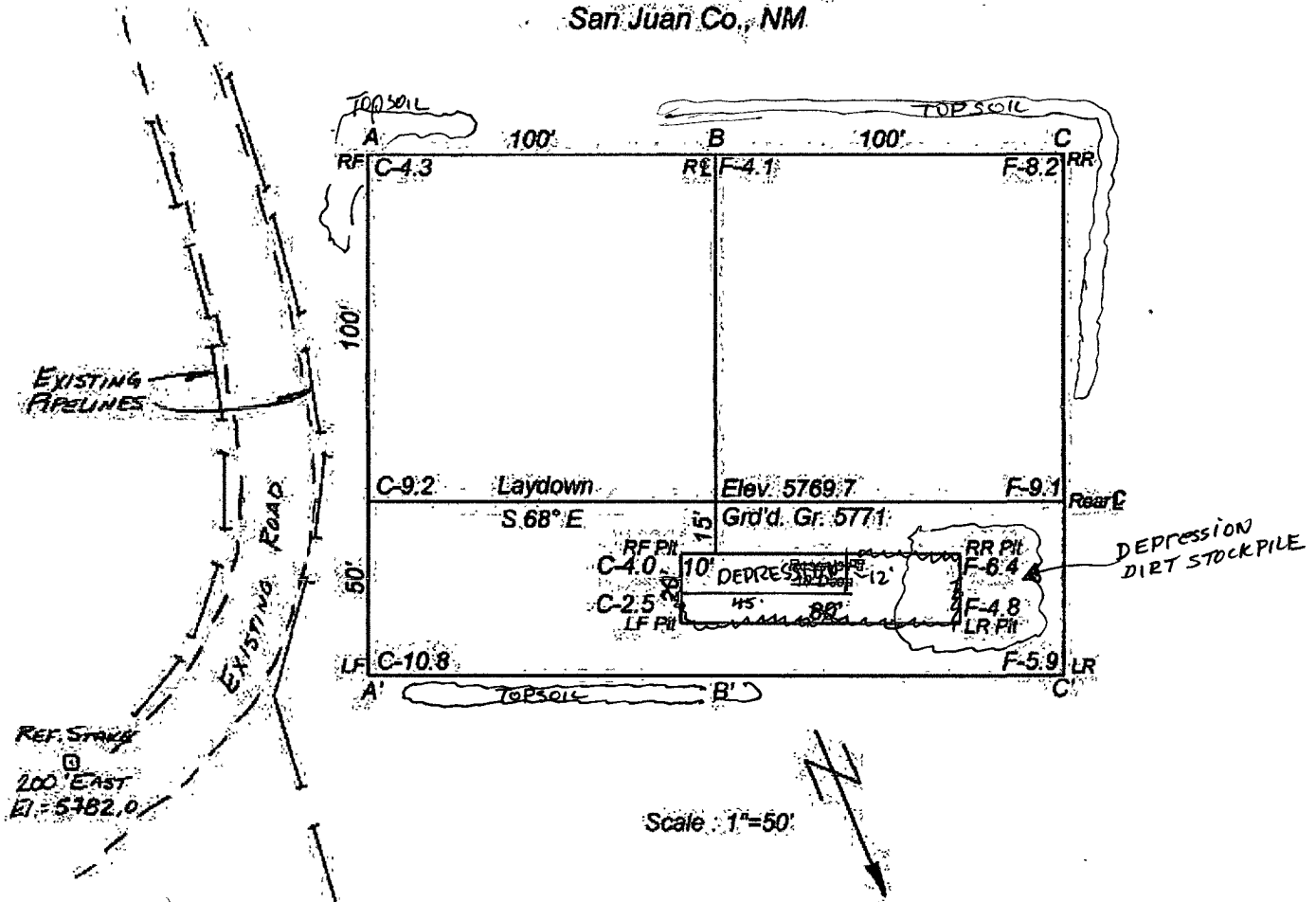
- a. WLC will close this closed loop system within 60 days of the release of the drilling rig.
- b. WLC will remove the steel tank as soon as the liquids and solids are removed. A sample collection program, in accordance with the closure requirements of 19.15.17.13.B(1)(b)(i) will be initiated as soon as the steel tank is removed of any areas stained by accidental discharge to the depression. The samples will be analyzed and reported in accordance with the regulations.
 - i. If the testing of the soil meets the quality standards of 19.15.17.13.B(1)(b)(i), shown in the table below, WLC will proceed with reclamation as outlined in c. below.
 - ii. If test results of the soil do not meet the quality standards of 19.15.17.13.B(1)(b)(i), shown in the table below, WLC will consult with the Aztec District Office and the applicable closure method determined by this office will be initiated.

Components	Tests Method	Limit (mg/Kg)
Benzene	EPA SW-846 8021B or 8260B	0.2
BTEX	EPA SW-846 8021B or 8260B	50
TPH	EPA SW-846 418.1	2500
GRO/DRO	EPA SW-846 8015M	500
Chlorides	EPA 300.1	1000 /500

- c. WLC will use the depression dirt stockpile to provide compacted fill over the depression area to be used for location of the steel pit for the completion rig and for future production equipment placement if needed. All of the above operational procedures and standards will be employed for the steel pit of the completion rig. WLC will file the applicable closure report with attachments within 60 days of the completion of closure.
- d. The depression area not used for production facility placement will be re-contoured and seeded with a seed mix approved by the NMOCD at the time of final abandonment.

REF. STAKE
 200' SOUTH
 EI: 5770.8

WEST LARGO CORP.
 STATE COM 32 #2
 785' FNL & 480' FWL
 Sec. 32, T29N, R9W, NMPM
 San Juan Co., NM



A-A' Vert.: 1"=30' Horiz.: 1"=50'

5775						
5785						

B-B'

5775						
5785						

C-C'

5775						
5785						

District I
1623 N. French Dr., Hobbs, NM 88240
District II
1301 W. Grand Avenue, Artesia, NM 88210
District III
1000 Rio Brava Rd., Aztec, NM 87410
District IV
1220 S. St. Francis Dr., Santa Fe, NM 87505

State of New Mexico
Energy, Minerals & Natural Resources Department
OIL CONSERVATION DIVISION
1220 South St. Francis Dr.
Santa Fe, NM 87505

Form C-102
Revised October 12, 2005
Submit to Appropriate District Office
State Lease - 4 Copies
Fee Lease - 3 Copies

☐ AMENDED REPORT

WELL LOCATION AND ACREAGE DEDICATION PLAT

1. API Number		2. Pool Code 71629		3. Pool Name Basin Fruitland Coal	
4. Property Code 14175		5. Property Name STATE COM 32			6. Well Number 2
7. OGRID No. 37197		8. Operator Name WEST LARGO CORP.			9. Elevation 5770
10. Surface Location					
UL or Lot No. D	Section 32	Township 29 N	Range 9 W	Lot 1/4 785	Feet from the North/South Line North 480
			Feet from the East/West Line West	County San Juan	
11. Bottom Hole Location If Different From Surface					
UL or Lot No.	Section	Township	Range	Lot 1/4	Feet from the North/South Line
			Feet from the East/West Line	County	
12. Dedicated Acres (W/2) 320		13. Joint or Infill Y	14. Consolidation Code C		15. Order No.

No allowable will be assigned to this completion until all interests have been consolidated or a non-standard unit has been approved by the division.

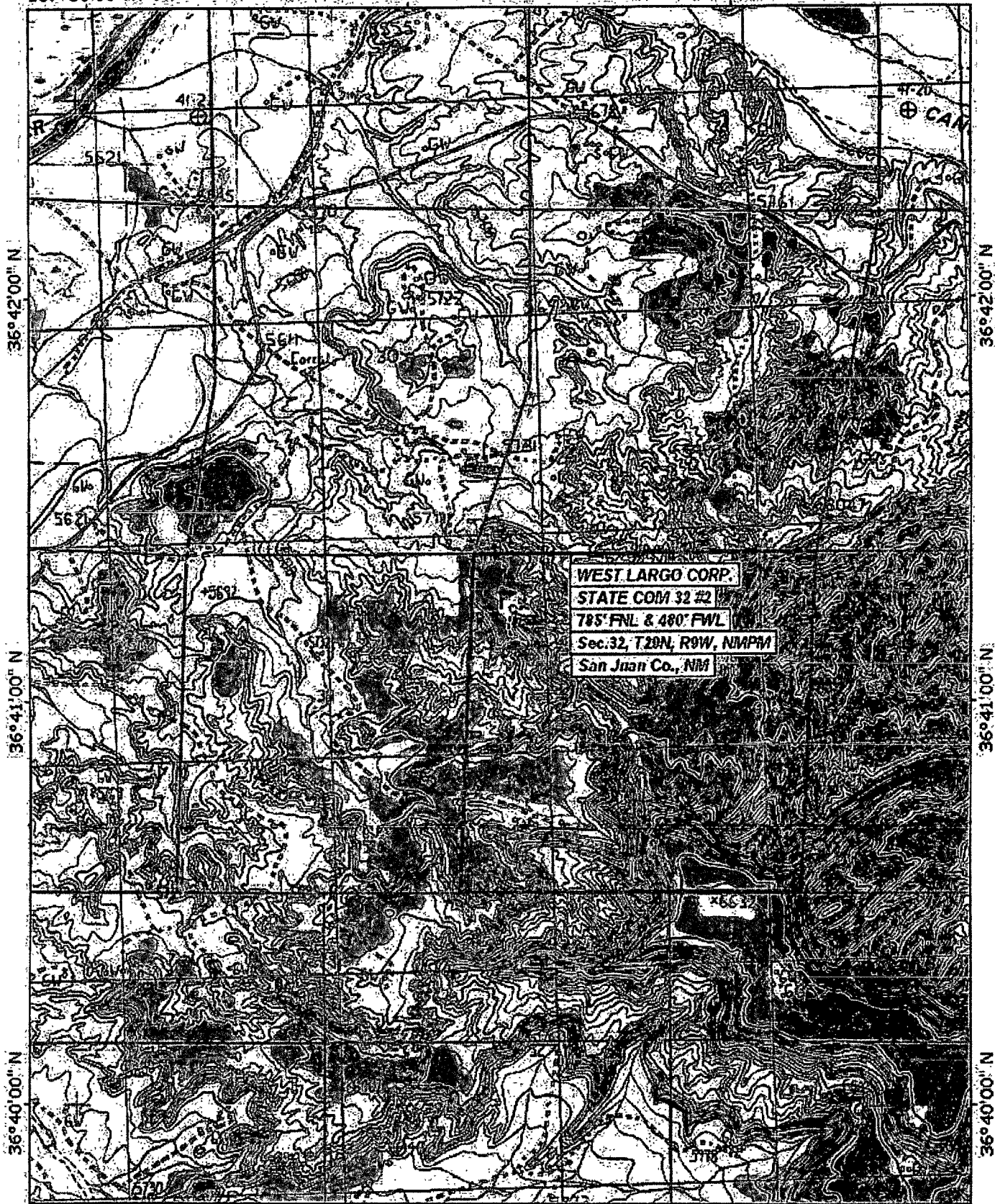
16. S 89° 33' W 79.36 Ch. 785' 480' Lat. 36.68733° N Long. 107.81203° W 77.36 Ch. Sec. 32 N 89° 56' W 78.62 Ch.		17. OPERATOR CERTIFICATION I hereby certify that the information contained herein is true and complete to the best of my knowledge and belief, and that this organization either owns a working interest or an undivided interest in the land including the proposed bottom hole location or has a right to drill this well at this location pursuant to a contract with an owner of such mineral or working interest, or to a voluntary pooling agreement or a compulsory pooling order heretofore entered by the division. Signature _____ Date _____ Printed Name _____	
18. SURVEYOR CERTIFICATION I hereby certify that the well location shown on this plat was plotted from field notes of actual surveys made by me or under my supervision, and that the same is true and correct to the best of my knowledge. Date of Survey _____ Signature and Seal of Licensed Surveyor _____ William M. Manrique II Certificate Number 8466			

STATE COM 32 #2

107°50'00" W

107°49'00" W

WGS84 107°48'00" W



36°42'00" N

36°42'00" N

36°41'00" N

36°41'00" N

36°40'00" N

36°40'00" N

107°50'00" W

107°49'00" W

WGS84 107°48'00" W

10°

0 1000 FEET 0 500 1000 METERS

Map created with TOPO! © 2003 National Geographic (www.nationalgeographic.com/topo)