

In Lieu of
Form 3160
(June 1990)

UNITED STATES
DEPARTMENT OF INTERIOR
BUREAU OF LAND MANAGEMENT

RECEIVED

MAY 14 2009

FORM APPROVED
Budget Bureau No 1004-0135
Expires: March 31, 1993

SUNDRY NOTICE AND REPORTS ON WELL USE APPLICATION
Do not use this form for proposals to drill or to deepen or reentry to a different reservoir for use in an application
TO DRILL" for permit for such proposals

| | | |
|---|--|---|
| SUBMIT IN TRIPLICATE | | 5. Lease Designation and Serial No. Jicarilla Apache Contract #92 |
| | | 6. If Indian, Allottee or Tribe Name Jicarilla Apache Nation |
| | | 7. If Unit or CA, Agreement Designation |
| 1. Type of Well Oil Well Gas Well <input checked="" type="checkbox"/> Other | | 8. Well Name and No. Jicarilla 92 #2B |
| 2. Name of Operator WILLIAMS PRODUCTION COMPANY | | 9. API Well No 30-039-29935 |
| 3. Address and Telephone No. PO BOX 640 Aztec, NM 87410-0640 | | 10. Field and Pool, or Exploratory Area Blanco MV/ |
| 4. Location of Well (Footage, Sec , T , R., M., or Survey Description) 1980' FSL & 660' FWL SEC 29, T27N, R3W | | 11. County or Parish, State Rio Arriba, NM |

CHECK APPROPRIATE BOX(s) TO INDICATE NATURE OF NOTICE, REPORT, OR OTHER DATA

| TYPE OF SUBMISSION | TYPE OF ACTION |
|---|--|
| Notice of Intent | Abandonment |
| <input checked="" type="checkbox"/> Subsequent Report | Recompletion |
| Final Abandonment | Plugging Back |
| | Casing Repair |
| | Altering Casing |
| | <input checked="" type="checkbox"/> Other <u>Squeeze Job</u> |
| | Change of Plans |
| | New Construction |
| | Non-Routine Fracturing |
| | Water Shut-Off |
| | Conversion to Injection |
| | Dispose Water |
| | (Note Report results of multiple completion on Well Completion or Recompletion Report and Log form) |

13. Describe Proposed or Completed Operations (Clearly state all pertinent details, and give pertinent dates, including estimated date of starting any proposed work If well is directionally drilled, give subsurface locations and measured and true vertical depths for all markers and zones pertinent to this work)*

04-16-2009

Recap: St equip & load out equip on Jicarilla 93 #15, road rig & equip to Jicarilla 92 #2B, MIRU, RU FL to tk, SITP=450 psi, SICP = 1125 psi, bd to tk, NDWH, NU BOP's, RU floor, install 2 7/8" rams, elevators & slips, pull tbg hgr, TOH w/ 2 7/8" 6.5# J-55 eue tbg, secure well & SDFN.

04-17-2009

Recap: St equip, SICP=650 psi, bleed to tank, RU WL, RIH & WL set 7 5/8" CIBP @ 4285', LD 7 5/8" csg w/ FW, press test CIBP & 7 5/8" csg 1500 psi, no leak off, bleed off press, RIH w/ perf gun & get on depth, press 7 5/8" csg to 500 psi per engineer, unable to obtain 500 psi due to gate valve leaking, got to 300 psi, perf 3 squeeze holes @ 4234' w/ 3 1/8" HSC, 15 grm chg, 11' penetration, .48 dia holes, SD pump, POH, SI blind rams, est IR w/ rig pump, 3 bpm 550 psi, 6 bbls to load, notify engineer, RD WL, MU Weatherford 7 5/8" cmt ret, bottom of cmt ret would only go down to top of tbg head, POH, top slip broke, caliper & OD cmt ret, called Halliburton to bring out cmt ret, WO cmt ret, MU 7 5/8" Halliburton cmt ret & TIH w/ 2 7/8" tbg, pump thru ret before setting, set 7 5/8" cmt ret @ 4124', RU HOWCO Serv, press ann 500 psi, est rate down tbg, 3 bpm @ 960#, mix 300 sx cmt, FRACCEM TM SYTEM, 2% halad, .1% cfr-3, 3 lb gilsonite, pump cmt @ 3 bpm @ 210 psi, 76 bbls cmt in hole press @ 680 psi, displ w/ 23.5 bbls wtr, final press 1015 psi, ISDP 600 psi, sting out of ret, rev out 1 5 bbls cmt, RD HOWCO, monitored BH during job, no blow or returns, pull 11 stds, secure well, SDFW.

RCVD MAY 21 '09

OIL CONS. DIV.

DISL 3

- 14 I hereby certify that the foregoing is true and correct

Signed

Larry Higgins

Title Regulatory Specialist

Date 5-14-09

(This space for Federal or State office use)

Approved by

Title

Conditions of approval, if any.

| |
|-------------------------|
| ACCEPTED FOR RECORD |
| Date MAY 19 2009 |
| FARMINGTON FIELD OFFICE |
| BY T. Salvers |

Title 18 U.S.C. Section 1001, makes it a crime for any person knowingly and willfully to make to any department or agency of the United States any false, fictitious or fraudulent statements or representations as to any matter within its jurisdiction

NMOC

Jicarill 92 #2B – Page 2

04-20-2009

Recap: St equip, SITP=0, SICP=0, TOH w/ setting tool, RU Warnor WL, run CBL, 4120' to 3350', notify engineer, WO on call f/ engineer for depth to shoot squeeze holes, RIH and shoot 3 squeeze holes w/ 3 1/8" HSC, 15 grm chg, 11" penetration, .48 dia holes @ 3750' w/ 300 psi on csg, press didn't change, POH w/ WL, IR down csg w/ rig pump, .5 bbl to load hole, broke @ 1700 psi back to 1400 psi, increase rate, IR=1.5 bpm @ 1800 psi, pumped 20 bbls, notify engineer, RD WL, notify Halliburton, load 100 sx neat cmt per engineer, WO tool hand & cmt trucks, tool hand on loc, MU 7 5/8" cmt ret & TIH w/ 2 7/8" tbg, set ret @ 3664', RU Halliburton, test lines 3000 psi, press ann 500 psi, est rate down tbg, 4 bbls to load, IR=1.5 bpm @ 1700 psi, pump 6 bbls FW, pump 100 sx (21 bbls) class GD cmt @ 15.6 ppg, 1.18 yield, 5.2 gal/sx H2O, 1.5 bpm @ 1748 psi, st displ 1.5 bpm @ 785 psi, 13 bbls gone 1.5 @ 2100 psi, slow rate to 1 bpm, 19.5 bbls gone slow rate to .5 bpm @ 1900 psi, SD 21 bbls gone, FP 2093 psi, ISDP 1640 psi, sting out of ret, pump 42 bbls, rev out 1 bbl good cmt, RD Halliburton, TOH w/ setting tool, SIW, SD & WOC 4/21, OSD till 4/22/09, will run CBL on 4/22.

04-22-2009

Recap: SICP=0, RU WL, run CBL from 3647' to 3000', notify engineer, shoot 3 squeeze holes @ 2400' w/ 3 1/8" HSC, 15 grm chg, 11' penetration, .48 dia holes w/ 300 psi on csg, no change in press, no returns or blow out csg head valve, POH, est rate down csg w/ rig pump, IR 1.5 bpm @ 1750 psi, pumped 20 bbls, SD, notify engineer, call for cmt & tool hand, TIH & set 7 5/8" cmt ret @ 2295', BJ RU, test lines 2500 psi, press ann 500 psi, 1 bbl to ld tbg w/ FW, IR 1.5 bpm @ 1650 psi, mix & pump 100 sx type-3 neat cmt @ 14.8#, 1.33 yield, 19 bbls cmt gone press @ 1100#, 23 bbls cmt gone st displ, 1.5 bpm @ 1560#, 8 bbls displ gone press 2050#, slow rate to .5 bpm @ 1820#, total displ 13.2 bbls, final press 2015#, sting out of ret & rev out 1.5 bbls good cmt, RD BJ, TOH w/ setting tool, SIW, SDFN.

04-23-2009

Recap. St equip, SICP=0, RU WL, Run CBL 2285' to 1540', call engineer & left message, E-mail log to engineer & WO call, recd call from engineer, said RD WL, MU 6 3/4" junk mill, PU 8 - 3 1/2" DC's & CX to 2 7/8" tbg, TIH to 2278', RU PS & pump, SIW, SDFN.

04-24-2009

Recap: St equip, SICP=0, press test 7 5/8" 26 4# csg to 500 psi 30 min, no leak off, bleed off press, DO cmt ret @ 2295' - 2298', DO cmt 2298' to 2350', DO cmt 2298' to 2350', circ clean, SIW & SDFN.

04-25-2009

Recap: St equip, SITP=0, SICP=0, DO cmt 2350' to 2412', circ clean, press test sqz holes @ 2400' to 500 psi 30 min, no leak off, good test, bleed off press, RD PS, TIH & tag @ 3654', RU PS, DO cmt to ret, DO cmt ret @ 3667', DO cmt to 3687', circ clean, SIW & SDFN.

04-26-2009

Recap: St equip, SITP=0, SICP=0, DO cmt 3687' to 3702', driller noticed 3 bad spots on DL, circ clean, notify pusher & engineer, WO new DL, change DL, RU PS, DO cmt 3702' to 3787', circ clean, test sqz holes @ 3750' to 525 psi 30 min, no leak off, bleed off press, RD PS, LD 5 jts, SIW & SDFN.

04-27-2009

Recap: St equip, SITP=0, SICP=0, TOH w/ 6 3/4" junk mill, change out mill & TIH to 4110', RU PS, est circ w/ rig pump, DO cmt ret @ 4128', DO cmt 4131' to 4143', circ hole clean, SIW & SDFN.

04-28-2009

Recap: St equip, SM, SITP=0, SICP=0, DO cmt 4143' to 4245', CO to CIBP @ 4285', press test sqz holes @ 4234' to 500 psi 30 min, good test. Bleed off press, circ hole clean, RD PS & TOH. RU WL, run CBL 4277' to 1970', POH, RD WL, SIW & SDFN.

04-29-2009

Recap. St equip, SITP=0, SICP=0, TIH w/ 6 3/4" bit & stg in w/ air to CIBP @ 4285', est circ w/ 12 bph mist, DO CIBP @ 4285', string wt 24K, lost about 14k on string wt, unable to go down or rotate, by pass air, LD 2 jts, pump 30 bbl wtr down tbg, LD 4 jts, got some of wt back, saver sub got cross threaded, call for another one, well st flowing to tank, BO saver sub while well blows down, SIW & let press equalize above & below plug, unable to go down hole, WO saver sub, RU PS & MU saver sub, est circ w/ 12 bph air mist, unloaded 30 bbls wtr, had good circ, st drlg on CIBP, swivel torqued up, bypass, air, LD 1 jt, put air back on, unable to come up or down or rotate, tbg press to 2000 psi, bypass air, pull to 60K pipe stuck, notify engineer, pump 60 bbls wtr down ann w/ 40K pulled on tbg, didn't change anything, notify engineer, leave 15K pulled on tbg, SIW & SDFN

04-30-2009

Recap: St equip, SITP=375 psi, SICP=200, wt indicator still showing 40K, notify engineer, Engineer called back said st fishing operation. Call for FP & BO & FT hand, bd csg to FB tank, pump 45 bbls wtr down tbg, didn't press up, tbg on vacuum, work pipe, til WL shows up, RU WL Specialties, FP tbg & DC's, tool OD 1 43, could only get 15' inside 1st DC, POH & re-head for 1 1/8" tool, RIH w/ 1 1/8" tool & FP DC's, showing stuck @ 4029', free @ 4008', POH, notify engineer, est circ w/ 12 bph air mist, press to 1550 psi, st unloading fluid, press dropped to 950 psi & leveled out, circ & work pipe, pulled to 80K, notify engineer, bypass air, kill tbg, RIH w/ string shot, shoot tool jt @ 4035' & attempt back off, didn't back off, POH & RU another shot, RIH & back off DC's @ 4008', POH, RD WL, TOH w/ 2 7/8" tbg & 3 1/5" DC's, left 2 DC's & junk mill in hole, SIW & SDFN.

05-01-2009

Recap SU equip, SICP=300 psi, bd to tank, MU 5 3/4" OD OS dressed w/ 3 1/2" grapple, bumper sub, jar, 5 - 3 1/2" DC's, intensifier, CX to 2 7/8" tbg & TIH, tie back sgl line, tag FT @ 4008', latch onto fish, st jarring up, jarred fish up hole 11' & then it came free, pull 3 stds, get back on 2 lines, TOH, rec 1 full DC & 12' of another one, both collars bent, notify engineer (possible down hole fire). LD DC's we were jarring with, MU 6 3/4" OD shoe & 1 jt 6" WP, PU 6 - 3 1/2" DC's, CX to 2 7/8" tbg & TIH, tag @ 4017', tie back sgl line, RU PS, secure well & SDFN.

05-02-2009

Recap. SU equip, SITP=0, SICP=350, bd to tank, est circ w/ 12 bph mist, start milling w/ 6 11/16" OD shoe @ 4017', made 1', got call from engineer, discussed were we tagged w/ WO shoe & were fish top might be, said to TOH & SD 5/3 & 5/4, circ clean, bypass air mist, RD PS, TOH, SIW, SD operations until 5/5/09. Note: when we got stuck mill was @ 4077', BO DC's @ 4008' WL depth, fish wash jarred on & moved up hole 11', at that point it drug for 20' 43,000 over string wt & then pulled free, if this is when the collar parted est FT @ 4023', but it is not known at this point when collar actually parted, if it was already parted before we started jarring est FT @ 4053'.

05-06-2009

Recap: SU equip, SICP=300 psi, bd to tank, TIH w/ 4 11/16" OD shoe, 1 jt 6" wash pipe, 6 - 3 1/2" DC's, & 2 7/8" tbg, Est circ w/ 12 bph air mist, mill 2' f/ 4018' to 4020', fell free to 4024', mill 6' 4024' to 4030', circ hole clean, PU to 3999', SIW & SDFN.

05-07-2009

Recap: St equip, SM, SITP=0, SICP=720 psi, bd to tank, Est circ w/ air & 14 bph mist, Fall free f/ 4030' to 4032', mill 4032' to 4034', fall free to 4038', mill 4038' to 4040', not making any hole, acts like some junk jammed in bottom of shoe, notify engineer, Bypass air, RD PS, TOH, When we got out of hole we were missing shoe & 14' of wash pipe, bottom of wash pipe jagged, slag on side of wash pipe & 2' up from bottom it was necked down, notify engineer, discuss options, SIW, SDFN, oper for 5/8/09: make a spear run

05-08-2009

Recap: SICP=600 psi, bd to tank, brak out float sub f/ top of wash pipe, MU spear w/ 5.3 OD grapple, bumper sub, jar, 6 - 3 1/2" DC's & intensifier, TIH, CX to 2 7/8" tbg & TIH, tie back single line, Est fish top @ 4020', felt like spear going down inside wash pipe 4017' to 4022', set down wght @ 4022', rotate pipe to set grapple, PU, no drag or overpull, made 3 more attempts, unable to spear wash pipe, notify engineer, TOH, no significant marks on spear or grapple to indicate we were inside wash pipe, Notify engineer, discussed 2 options, SIW, SD 5/9, 5/10, 5/11

05-12-2009

Recap: St equip, SM, SICP 900 psi, bd to tank, TIH w/ 6 - 3 1/2" DC's, TOH & LD 3 1/2" DC's, move 7 - 3 1/2" DC's off tbg flt to hotshot flt, BO fishing tools & load, TIH w/ 88 jts 2 7/8" 6.5# J-55 eue tbg, TOH LD 2 7/8" tbg on float, TIH w/ rest of 2 7/8" tbg & TOH LD on flt, RD floor, ND BOP's, NU tree, RD pump, pit & FB tank, clean up loc, secure well, SDFN, oper for 5/13/09: RD, move rig to AWS yard

Note: It was felt that there was a downhole fire while drilling on CIBP on 4-29-09 causing pipe to become stuck.

Per conversations between Kirk Place with Williams E&P and Troy Salyers (BLM) and Kelly Roberts (NMOCD) it is Williams intention to Temporary Abandon this well until December 2009 pending an evaluation of potential producing horizons.

Jicarilla 92 #2B
Blanco Mesa Verde

Spud Date: 01-16-09
Completed: 03-26-09
1st Delivered: 00-00-00

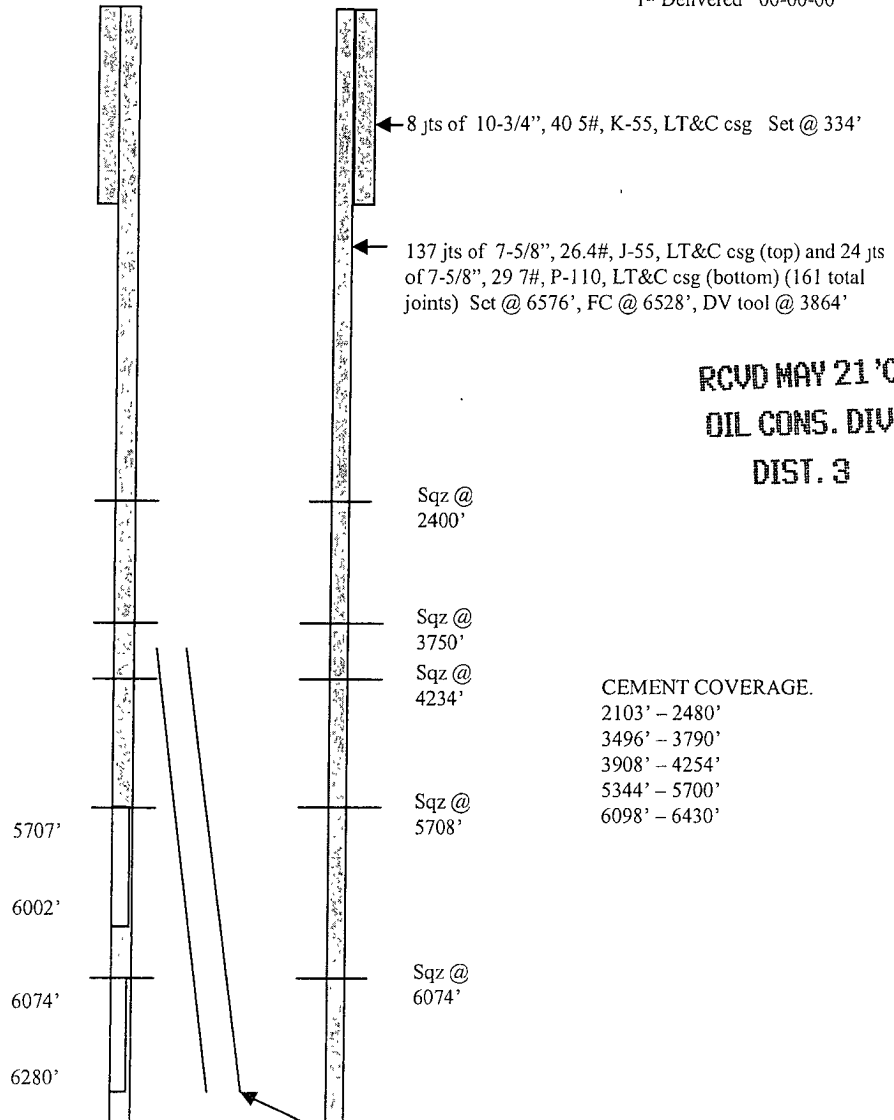
Location:
1980' FSL & 660' FWL
NW/4 SW/4 Section 29 (L), T27N, R03W
Rio Arriba Co., NM

Elevation: 7209' GR
API #: 30-039-29935

| <u>Tops</u> | <u>Depth</u> |
|-----------------|--------------|
| Fruitland | 3738' |
| Pictured Cliffs | 3971' |
| Cliff House | 5690' |
| Menefee | 5812' |
| Point Lookout | 6106' |
| Mancos | 6452' |

Cliff House/Menefee 5707'-6002' (40, 0 3/4" holes) Frac w/ 1303# 20/40 Brown Sand followed with 4948# Mono Prop

Point Lookout 6074'-6280' (54, 0 3/4" holes) Frac w/ 1193# 20/40 Brown Sand followed with 4423# Mono Prop



RCVD MAY 21 '09
OIL CONS. DIV.
DIST. 3

CEMENT COVERAGE.
2103' - 2480'
3496' - 3790'
3908' - 4254'
5344' - 5700'
6098' - 6430'

Note: as per sundry dated 5-14-09
This well is on "Temporary Abandon"
Status.

TD @ 6600'
PBTD @ 6457'

| HOLE SIZE | CASING | CEMENT | CU. FT. | CMT TOP |
|-----------|-----------------------|---------|-------------|-----------|
| 14-3/4" | 10-3/4", 40.5# | 250 sxs | 348 cu.ft. | surface |
| 9-7/8" | 7-5/8", 26.4# & 29.7# | 855 sxs | 1912 cu.ft. | See above |
| | | | | |