

UNITED STATES
DEPARTMENT OF THE INTERIOR
BUREAU OF LAND MANAGEMENT

RECEIVED

MAY 18 2009

Sundry Notices and Reports on Wells

Bureau of Land Management
Farmington Field Office

1. Type of Well
GAS

5. Lease Number
SF 078886

6. If Indian, All. or
Tribe Name

7. Unit Agreement Name

2. Name of Operator

BURLINGTON

RESOURCES OIL & GAS COMPANY LP

8. Canyon Largo Unit
Well Name & Number
Canyon Largo Unit 260

3. Address & Phone No. of Operator

P.O. Box 4289, Farmington, NM 87499

9. API Well No.

4. Location of Well, Footage, Sec., T, R, M

Unit K (NESW), 1710' FSL & 1660' FWL, Section 17, T24N, R6W, NMPM

10. 30-039-20977
Field and Pool

11. Ballard Pictured Cliffs
County and State
Rio Arriba Co., NM

12. CHECK APPROPRIATE BOX TO INDICATE NATURE OF NOTICE, REPORT, OTHER DATA

Type of Submission
☒ Notice of Intent

Type of Action
☐ Abandonment

☐ Change of Plans☒ Other MIT / Casing Repair☐ Subsequent Report☐ Recompletion☐ New Construction☐ Final Abandonment☐ Plugging☐ Non-Routine Fracturing☐ Casing Repair☐ Water Shut off☐ Altering Casing☐ Conversion to Injection

13. Describe Proposed or Completed Operations

Burlington Resources requests to perform an MIT/Casing repair per the attached procedure.

RCVD MAY 28 '09

Attached: Wellbore Schematic

OIL CONS. DIV.

14. I hereby certify that the foregoing is true and correct.

DIST. 3

Signed Tracey N. Monroe Tracey N. Monroe Title Staff Regulatory Technician Date 5/15/09

(This space for Federal or State Office use)

APPROVED BY [Signature]Title Petr. Eng.Date 5/26/09

CONDITION OF APPROVAL, if any:

Title 18 U.S.C. Section 1001, makes it a crime for any person knowingly and willfully to make any department or agency of the United States any false, fictitious or fraudulent statements or representations as to any matter within its jurisdiction.

SEE ATTACHED FOR
CONDITIONS OF APPROVAL

NMOCD W

NOTIFY NMOCD AZTEC OFFICE IF CASING REPAIR IS NECESSARY

ConocoPhillips
CANYON LARGO UNIT 260
MIT/Casing Repair

Lat 36° 18' 35.496" N

Long 107° 29' 40.344" W

PROCEDURE

1. Hold pre-job safety meeting. Comply with all NMOCD, BLM, and COPC safety and environmental regulations..
2. MIRU CTU. Check casing, tubing, and bradenhead pressures and record them in Wellview.
3. NU BOP. NU flow T and blooie line to flowback tank. NU injector.
4. RIH with ratchet packer on 1-1/4 CT. Set packer @ 1964' (50' above top PC perf). Test casing to surface to 500 psi for 30 min and record on a 2 hour chart.
5. Contact engineer with MIT results. If MIT passes, proceed to step 6. If MIT fails, locate casing leak and contact engineer with casing leak information. Prepare for a squeeze job or casing patch.
6. RIH with 1-1/4 CT with motor or wash tip as needed. Drill out retainer and cement if necessary. Clean out to PBTD @ 2109', record depth reached in Wellview.
7. Contact rig superintendent or engineer of any unusual findings and note in Wellview.
8. POOH with motor or wash tip. RIH with ratchet packer. Set packer @ 1964' (50' above top PC perf). Test casing to surface to 500 psi for 30 min and record on a 2 hour chart.
9. Contact engineer with MIT results. If MIT passes, proceed to the next step. If MIT fails, visit with the engineer on P&A .
10. Blow hole dry. POOH with 1-1/4 CT and packer. ND BOP and flow T. Notify Lease operator to retun well to production. RDMO.

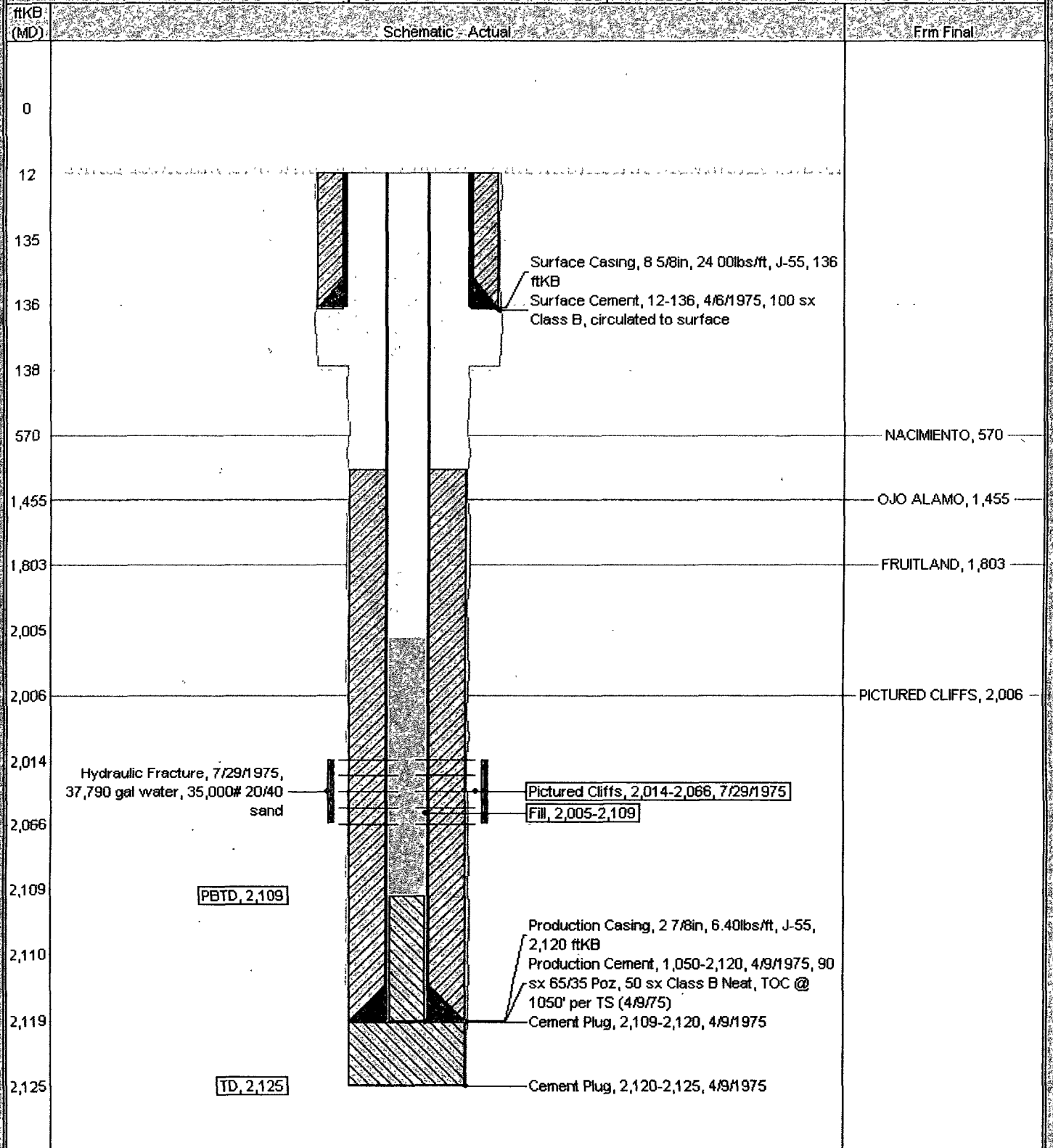
Current Schematic

ConocoPhillips

Well Name: CANYON LARGO UNIT #260

API/UNID	Surface Legal Location	Field Name	License No	State/Province	Well Configuration Type	Edit
3003920977	NMPM,017-024N-006W	BALLARD PICTURED CLIFFS (GAS)		NEW MEXICO		
Ground Elevation (ft)	Original KB/RT Elevation (ft)	KB-Ground Distance (ft)	KB-Casing Flange Distance (ft)	KB-Tubing Hanger Distance (ft)		
6,541.00	6,553.00	12.00				

Well Config: CANYON LARGO UNIT 260, 4/14/2009 7:09:56 AM



BLM CONDITIONS OF APPROVAL

CASING REPAIR, WORKOVER AND RECOMPLETION OPERATIONS:

- 1. If casing repair operations are needed, obtain prior approval from this office before commencing repairs.**
- 2. A properly functioning BOP and related equipment must be installed prior to commencing casing repair, workover and/or recompletion operations.**
- 3. If this well is in a Seasonal Closure Area, adhere to closure stipulations.**

SURFACE USE OPERATIONS:

The following Stipulations will apply to this well unless a particular Surface Managing Agency or private surface owner has supplied to BLM and operator a contradictory environmental stipulation. The failure of operator to comply with these requirements may result in assessments or penalties pursuant to 43 CFR 3163.1 or 3163.2. A copy of these conditions of approval shall be present on location during construction, drilling and reclamation activity.

An agreement between operator and fee landowner will take precedence over BLM surface stipulations unless (in reference to 43 CFR Part 3160) 1) BLM determines that operator's actions will affect adjacent Federal or Indian surface, or 2) operator does not maintain well area and lease premises in a workmanlike manner with due regard for safety, conservation and appearance, or 3) no such agreement exists, or 4) in the event of well abandonment, minimal Federal restoration requirements will be required.

STANDARD STIPULATIONS: All surface areas disturbed during work-over activities and not in use for production activities will be reseeded. This should occur in the first 90 days after completion of work-over activities.

SPECIAL STIPULATIONS:

- 1. Pits will be fenced during work-over operation.**
- 2. All disturbance will be kept on existing pad.**
- 3. All pits will be pulled and closed immediately upon completion of the work-over activities.**
- 4. Pits will be lined with an impervious material at least 12 mils thick.**