

RECEIVED

In Lieu of
Form 3160
(June 1990)

UNITED STATES
DEPARTMENT OF INTERIOR
BUREAU OF LAND MANAGEMENT

JUN 01 2009

FORM APPROVED
Budget Bureau No 1004-0135
Expires. March 31, 1993

Bureau of Land Management

SUNDRY NOTICE AND REPORTS ON WELLS

Do not use this form for proposals to drill or to deepen or reentry to a different reservoir. Use "APPLICATION TO DRILL" for permit for such proposals

SUBMIT IN TRIPLICATE		5. Lease Designation and Serial No. NMSF-078894
		6. If Indian, Allottee or Tribe Name
		7. If Unit or CA, Agreement Designation Rosa Unit
1. Type of Well Oil Well Gas Well X Other	8. Well Name and No Rosa Unit #311A	
2. Name of Operator WILLIAMS PRODUCTION COMPANY	9. API Well No. 30-039-30441	
3. Address and Telephone No. PO Box 640 Aztec, NM 87410-0640	10. Field and Pool, or Exploratory Area Basin Fruitland Coal	
4. Location of Well (Footage, Sec., T., R., M., or Survey Description) Sur: 710' FNL & 820' FEL SEC 33, T31N, R4W BHL: 749' FSL & 839' FEL SEC 28, T31N, T4W	11. County or Parish, State Rio Arriba, New Mexico	

CHECK APPROPRIATE BOX(s) TO INDICATE NATURE OF NOTICE, REPORT, OR OTHER DATA

TYPE OF SUBMISSION	TYPE OF ACTION	
Notice of Intent	Abandonment	Change of Plans
X Subsequent Report	Recompletion	New Construction
Final Abandonment	Plugging Back	Non-Routine Fracturing
	Casing Repair	Water Shut-Off
	Altering Casing	Conversion to Injection
	X Cavitation/Casing	Dispose Water
		(Note Report results of multiple completion on Well Completion or Recompletion Report and Log form)

13. Describe Proposed or Completed Operations (Clearly state all pertinent details, and give pertinent dates, including estimated date of starting any proposed work. If well is directionally drilled, give subsurface locations and measured and true vertical depths for all markers and zones pertinent to this work)*

05-04-2009

Recap: Load out equip on Triple S trucks, road rig & equip from Rosa #380 to Rosa # 311A. MIRU, ND WH, SICP 110 psi, bleed csg down @ 2" line. POOW & LD 1-1/4" X 22' polished rod w/ 10' X 1-1/2" liner, 8' pony rod, 6' pony rod, 65, 3/4" FST 2-1/2 guided rods 5 per, 77 -3/4" FST rods, 8 - 1-1/2" HF sinker bars, & 2-1/2" X 1-1/4" X 8 X 12 RHAC pump w/ 1" X 6' gas anchor. ND SR WH, NU BOPE, RU rig floor, PU & RU tongs & equip. Secure well & equip & SWIFN.

05-05-2009

Recap: Ck & SU equip, SICP 55 psi, bleed well down @ 2" line. POOW w/ tbg hanger & un-land well. RU SB services, POOW, unattached & spool up 1/4" SS chem line. RD SB Serv, TOOH & standback 119 jts 2-7/8", 6.5#, J-55, NUE, 10rd 1J tbg, 2 28" F-nipple & 2-7/8" mud anchor. Vaughn Oilfield Services on location to NU blooie lines. PU & RU manual tongs, tally, PU, MU & RIW as follows, 6-1/4" button bit, bit sub, eight 4-3/4" DC's, X-over sub & 113 jts 2-7/8" AOH DP. Secure well & equip, SWIFN.

RCVD JUN 4 '09
OIL CONS. DIV.
DIST. 3

14. I hereby certify that the foregoing is true and correct

Signed

Larry Higgins

Title Drilling COM

Date June 1, 2009

(This space for Federal or State office use)

Approved by

Title

Date JUN 03 2009

Conditions of approval, if any

FARMINGTON FIELD OFFICE

Title 18 U.S.C. Section 1001, makes it a crime for any person knowingly and willfully to make to any department or agency of the United States any false, fictitious or fraudulent statements or representations as to any matter within its jurisdiction

NMUCD

88

Page 2 – RU #311A

05-06-2009

Recap: Ck & SU equip, SICP 55 psi, bleed well down @ 2" line. PU DP sgls ck for fill, tagged fill @ 4000', 61' of fill, break circ w/ 10 bph air-mist w/ 1.5 gal foamer, 1/2 gal shale treat & 1/2 gal corrosion inhibitor per 20 bbl prod wtr unable to CO w/ 2.5 PS. RD & LD 2.5 PS, PU & RU 3.5 PS. PU DP sgls, break circ w/ air-mist CO to TD @ 4061', returned med fine to 1/8" coal & hvy black wtr. Blow well dry w/ air. LD 9 jts DP, pull into 7" csg & hang back 3.5 PS. FLOW TEST: Duration = 1/2 hr, Test Method = pitot, MCF/D = 0 mcf/d, Csg Psi = TLTM, Tbg Psi = 0 psi, Gas Type = dry, Gas Disposition = non flaring, Choke Size = 2" open line. SI well for 4 hr build up test. Turn over to FB hand & air hand for cavitation. Cavitate well w/ energized surges to 1000 psi, spray FW across mufflers when surges are released.

05-07-2009

Recap: Cavitate from shoe w/ nat & energized surges. Ck & SU equip, 4 hr SICP 35 psi, blow well down @ blooie line, no returns. PU 3.5 PS, PU & MU DP sgls, ck for fill, tagged bridge @ 3964' break circ w/ air-mist, CO to TD, very light returns of fine coal & grey wtr. LD 9 jts DP, pull into 7" csg, hang back PS. Build energized surges to 1300 psi w/ air-mist. Turn well over to FB hand & air hand for overnight cavitation, cont w/ surges to 1300 psi. FB hand reported that the last surge the pressure dropped from 1300 psi to 1100 psi in 1 hr & when he released the surge it brought back hvy black dust & hvy black wtr w/ med fine to 1/8" coal. Instructed FB hand to build surges to 1100 psi & spray surges w/ FW to control dust.

05-08-2009

Recap: Cavitate from shoe w/ nat & energized surges. Ck & SU equip, 4 hr SICP 15 psi, blow well down @ blooie line, no returns. PU 3.5 PS, PU & MU DP sgls, ck for fill, tagged bridge @ 3811' break circ w/ air-mist, CO, tagged several bridges throughout open hole. Returns hvy fine to 1/8" coal & hvy black wtr, very little gas. Blow well dry w/ air, LD 9 jts DP, pull into 7" csg, hang back PS. Build energized surges to 1000 psi w/ air-mist. Turn over to FB hand & air hand for overnight cavitation, cont w/ surges to 1000 psi. Spray surges w/ FW to control dust.

05-09-2009

Recap: Cavitate w/ nat & energized surges, spray FW across muffler on each surge, 4 hr SIP 100 psi. Nat surges are bringing back no solids w/ no wtr & very light gas, energized surges are bringing back med coal dust w/ light 1/8" coal & hvy black wtr.

05-10-2009

Recap: Cavitate w/ nat & energized surges, spray FW across muffler on each surge, 4 hr SIP 0 psi, bridged off, build surge to 1000 psi, released surge & bridge released. Energized surges are bringing back med coal dust w/ light 1/8" coal & hvy black wtr.

05-11-2009

Recap: Cavitate from shoe w/ nat & energized surges, ck & SU equip, 4 hr SICP 150 psi, blow well down @ blooie line, no returns. PU 3.5 PS, PU & MU DP sgls, ck for fill, tagged bridge @ 3812' break circ w/ air-mist, CO, tagged several bridges throughout open hole. Returns hvy fine to 1/8" coal & hvy black wtr, very light gas. Blow well dry w/ air, LD 9 jts DP, pull into 7" csg, hang back PS, install 2" X 1" swage & 1" tube on 2" line for flow test. FLOW TEST: Duration = 1 hr, Test Method = pitot, MCF/D = 88 mcf/d, Csg Psi = 5 oz, Tbg Psi = 0 psi, Gas Type = dry, Gas Disposition = non flaring, Choke Size = 1" open line. Turn over to FB & air hand for overnight cavitation, cont w/ surges to 1000 psi. Spray surges w/ FW to control dust.

05-12-2009

Recap: Cavitate from shoe w/ nat & energized surges. Ck & SU equip, 4 hr SICP 275 psi, blow well down @ blooie line, no returns. PU 3.5 PS, PU & MU DP sgls, ck for fill, tagged bridge @ 3901' break circ w/ air-mist, CO & tagged several bridges throughout open hole. Returns hvy fine to 1/8" coal & hvy black wtr, very light gas. Blow well dry w/ air, LD 9 jts DP, pull into 7" csg, hang back PS. Build energized surges to 1200 psi w/ air-mist. Build energized surges to 1200 psi w/ air-mist. Turn well over to FB & air hand for overnight cavitation, cont w/ surges to 1200 psi. Spray surges w/ FW to control dust.

05-13-2009

Recap: Cavitate from shoe w/ nat & energized surges. Ck & SU equip, 4 hr SICP 20 psi, blow well down @ blooie line, no returns. PU 3.5 PS, drl string was stuck, bridged off in 7" csg, break circ w/ air-mist, work pipe, LD 2 jts DP to free point, unloaded hvy fine to 1" coal, CO to TD @ 4061'. Returns hvy fine to 1/8" coal & hvy black wtr, very light gas. Blow well dry w/ air. LD 9 jts DP, pull into 7" csg, hang back PS. FLOW TEST: Duration = 1 hr, Test Method = pitot, MCF/D = 88 mcf/d, Csg Psi = 5 oz, Tbg Psi = 0 psi, Gas Type = dry, Gas Disposition = non flaring, Choke Size = 1" open line. Wash down vegetation behind blow pit w/ FW. Turn over to FB & air hand for overnight cavitation, cont w/ surges to 1200 psi. Spray surges w/ FW to control dust. Chase surges w/ air-mist.

05-14-2009

Recap: While building a surge the compressor blew a gasket, lost approx 5 to 6 gal of oil on ground. Instructed FB hand to SD until morning. Well SI, ck & SU equip, 6 hr SICP 215 psi, blow well down @ blooie line, no returns. RU 3.5 PS, WO compressor, move out compressor, set in & hook up replacement compressor, clean up oil spill. PU & MU DP sgls, ck for fill, tagged bridge @ 3905' break circ w/ air-mist, CO, tagged several bridges throughout open hole. Returns hvy fine to 1/8" coal & hvy black wtr, very light gas. Blow well dry w/ air. LD 9 jts DP, pull into 7" csg, hang back PS. Build energized surges to 1000 psi w/ air-mist. Turn over to FB & air hand for overnight cavitation, cont w/ surges to 1000 psi. Spray surges w/ FW to control dust. Chase surges w/ air-mist.

05-15-2009

Recap: Cavitate from shoe w/ natural & energized surges. Ck & SU equip, 4 hr SICP 225 psi, blow well down @ blooie line, no returns, very light gas, unload 5-1/2" liner. PU & MU DP sgls, ck for fill, tagged bridge @ 3905' break circ w/ air-mist, CO, hole is very tight, work pipe, circ & pump sweeps as needed, CO to TD @ 4061', returned hvy coal & hvy black wtr. Blow well dry w/ air, LD 9 jts DP, pull into 7" csg, hang back PS & secure well & loc. Turn well over to FB & air hand for overnight cavitation, condition hole w/ 4 hr nat surges, spray surges w/ FW to control dust. Chase surges w/ air-mist.

05-16-2009

Recap: Cavitate from shoe w/ natural surges. Ck & SU equip, 4 hr SICP 205 psi, blow well down @ blooie line, no returns, very light gas. PU & MU DP sgls, ck for fill, tagged bridge @ 3803' break circ w/ air-mist, CO, hole is very tight, work pipe, circ & pump sweeps as needed, running hvy coal from 3880' to 3970', CO to TD @ 4061', returned hvy coal & hvy black wtr. Blow well dry w/ air, LD 9 jts DP, pull into 7" csg, hang back PS, secure well & loc. Turn well over to FB & air hand for overnight cavitation, condition hole w/ nat surges, spray surges w/ FW to control dust. Chase surges w/ air-mist.

Page 3 – Rosa Unit #311A

05-17-2009

Recap: Cavitate w/ nat surges, spray FW across muffler on each surge, 4 hr SICP 90 psi, returns lt dust, no wtr & very light gas, SIWFN.

05-18-2009

Recap: Cavitate from shoe w/ natural surge. Ck & SU equip, 7 hr SICP 140 PSI, blow down well down @ blooie line, no returns, very LT gas, unload 5-1/2" liner. PU & MU DP sgls, ck for fill, tagged bridge @ 3814' break circ w/ air-mist, CO, hole is very tight @ 3880' to 3900', work pipe, circ & pump sweep as needed. CO to TD @ 4061', returned hvy coal & hvy black wtr. LD 7 jts DP, circ well, PU & MU DP sgls, circ w/ air-mist, CO, hole was still tight, work pipe, circ & pump sweeps as needed. Blow well dry w/ air. LD 9 jts DP, pull into 7" csg, hang back PS, secure well & loc. FLOW TEST: Duration = 1 hr, Test Method = Pitot, MCF/D = 88 mcf/d, Csg PSI = 5 oz, Tbg PSI = 0 PSI, Gas Type = dry, Gas Disposition = non flaring, Choke Size = 1" open line. Turn well over to FB hand & air hand for overnight cavitation, condition hole w/ natural surges, spray surges w/ FW to control dust, chase surges w/ air-mist.

05-19-2009

Recap: Cavitate from shoe w/ nat surges, ck & SU equip, 4 hr SICP 75 psi, blow well down @ blooie line, fine coal returns, very light gas. PU & MU DP sgls, ck for fill, tagged bridge @ 3880' break circ w/ air-mist, CO, hole is very tight to 3910', work pipe, circ & pump sweeps as needed. CO to TD @ 4061', returned hvy coal & hvy black wtr. LD 9 jts DP, pull into 7" csg, hang back PS, secure well & location. Turn well over to FB & air hand for overnight cavitation, condition hole w/ 4 hr energized surges, spray surges w/ FW to control dust, chase surges w/ air-mist.

05-20-2009

Recap: Cavitate from shoe w/ nat surges. Ck & SU equip, 4 hr SICP 75 psi, blow well down @ blooie line, fine coal, fine shale returns, light gas. PU & MU DP sgls, ck for fill, tagged bridge @ 3900' break circ w/ air mist, CO, hole is very tight to 3920', work pipe, circ & pump sweeps as needed. CO to TD @ 4061', returned hvy 1/4" coal & hvy black wtr. Blow well dry w/ air. LD 9 jts DP, pull into 7" csg, hang back PS, secure well & loc. FLOW TEST: Duration = 1hr, Test Method = Pitot, MCF/D = 88 mcf/d, Csg PSI = 0 psi, Gas Type = Dry, Gas Disposition = non flaring, Choke size = 1" open line. Turn well over to FB & air hand for overnight cavitation, condition hole w/ energized surges, spray surges w/ FW to control dust, chase surges w/ air mist.

05-21-2009

Recap: Cavitate from shoe w/ energized surges, ck & SU equip, 4 hr SICP 205 psi, blow well down @ blooie line, fine coal, fine shale returns, light gas. PU & MU DP sgls, ck for fill, tagged bridge @ 3890' break circ w/ air-mist, CO, hole is very tight to 3900', work pipe, circ & pump sweeps as needed, CO to TD @ 4691', returned hvy 1/4" coal & hvy black wtr, light amounts of shale. LD 9 jts DP, pull into 7" csg, hang back PS. Secure well & location. Turn well over to FB & air hand for overnight cavitation, cond hole w/ energized surges, spray surges w/ FW to control dust, chase surges w/ air-mist.

05-22-2009

Recap: Cavitate from shoe w/ energized surges. Ck & SU equip, 4 hr SICP 200 psi, blow well down @ blooie line, fine coal, fine shale returns, med gas. PU & MU DP sgls, ck for fill, tagged bridge @ 3990' break circ w/ air-mist, CO, hole is very tight to 3930', work pipe, circ & pump sweeps as needed CO to TD @ 4061', returned hvy 1/4" coal & hvy black wtr. Blow well dry w/ air. LD 9 jts DP, pull into 7" csg, hang back PS, secure well & location. FLOW TEST: Duration = 1hr, Test Method = Pitot, MCF/D = 96 mcf/d, Csg PSI = 6oz, Tbg PSI = 0 PSI, Gas Type = dry, Gas Disposition = non-flaring, Choke Size = 1" Open Hole. SIW for holiday weekend.

05-26-2009

Recap. Ck & SU equip, weekend SICP 350 psi, blow well down @ blooie line, fine coal returns, med gas. PU & MU DP sgls, ck for fill, tagged bridge @ 3890' break circ w/ air-mist, CO, work pipe, circ & pump sweeps as needed CO to ED @ 4061', returned light coal fines & hvy black wtr. Blow well dry w/ air. LD 9 jts DP pull into 7" csg. hand back PS. secure well & location. FLOW TEST: Duration= 1hr, Test Method= Pitot, MCF/D= 96 mcf/d, Csg PSI= 6 oz, Tbg PSI = 0 PSI, Gas Type= dry, Gas Disposition= non-flaring, Choke Size= 1" open line. Turn well over to FB & air hand for overnight cavitation, cond hole w/ energized surges, spray surges w/ FW to control dust, chase surges w/ air mist.

05-27-2009

Recap: Cavitate from shoe w/ Nat surges. Travel to location. -- SM w/ rig crew & air hand, check & state equipment 4 hr SICP 120 psi, blow well down @ blooie line, returns coal dust, light gas -- PU & MU DP sgls, check for fill, hit tight spot @ 3880', break circ w/ air-mist, clean out, hole is tight to 3990', work pipe, circ and pump sweeps as needed. Cleaned out to TD @ 4061', returned heavy 1/4 in. coal & heavy black water. -- LD 9 Jts DP, Pull into 7" csg, hang back PS, secure well & location. -- Run Pressure build up test, and 4 hr Surg build up, Release Surg and Nat. flow well. -- Turn well over to flowback hand & air hand for overnight cavitation, condition hole w/ natural surges

05-28-2009

Recap Cavitate from shoe w/ Nat surges, Travel to location. -- SM w/rig crew & air hand, check & start equipment 4 hr SICP 80 psi, blow well down @ blooie line, returns coal dust, light gas. -- PU & MU DP sgls, check for fill, hit tight spot @ 3880', but fell through, work pipe, circ and pump sweeps as need. Cleaned out to TD @ 4061', returned light coal dust & heavy gray water. -- Blow well dry -- LD 9 jts DP, Pull into 7" csg, hang back PS, secure well & location. Flow well to get air out of well -- FLOW TEST: Duration = 1 hr, Test Method = Pitot, MCF/D = 88 mcf/d, Csg PSI = 0 psi, Gas Type = dry, Gas Disposition = non-flaring, Choke Size = 1" open line. -- Turn well over to flowback hand & air hand to flow well overnight.

05-29-2009

Recap: Flowback hand & air hand flow well to atmosphere. -- SM w/ rig crew & air hand, check & start equipment. -- PU & MU DP sgls, check for fill, hit tight spot @ 3880', hole is tight to 3900', work pipe down to TD @ 4061'. -- LD 14 jts DP, Pull into 7" csg, hand back 3.5 PS, Stand back 54 stands DP, & 4 stands of Drill Collers. -- RU casing equipment, PU, MU and RIW as Follows - LA Set Shoe, 9 Jts 5-1/2" 17# N-80 EUE csg (368.65'), H-latch, TIW setting tool. -- RIW w/ liner assembly & 108 Jts AOH DP. PU 10 DP singles run in slow, tag @ 3888', Circ rotate to 4061'. Release liner @ 4061', PBTD @ 4061'. -- 7" shoe @ 3803', Liner top @ 3689', Liner bottom @ 4061', 114' overlap. -- RD & LD 3 5 PS. TOOH & LD DP. -- Secure well & Equipment. SIFN. No Accidents Reported.

Page 4 – Rosa Unit #311A

05-30-2009

Recap: Crew travel to location from Aztec Yard to Rosa Unit 311A. -- SICP 120 PSI. Bleed off down 2" line to pit. SM w/ crew, air hand, and Basin Wireline, RU Wireline -- TIH w/ wireline guns and perforate 5-1/2" liner w/ 11 grams charge, 0.53 inch holes, 4 shots per foot, as follows bottom to top, 3900' to 3920', (20'), 80 shots, 3857' to 3892', (35'), 140 shots, 3814' to 3834', (20'), 80 shots, total feet 75', and 300 shots. -- RD wireline, RU Tubing equipment. -- Tally, TIW w/ 2-7/8" Tbg as follows - 2-7/8" half mule shoe, String float, 125 Jts 2-7/8" 6.4#, J-55, NUE 10RD Tbg. -- Tie air onto tbg string, circulate well until returns are clean. -- TOOH w/ Tbg stand back tbg. -- TIH w/ Mud Anchor, Screen, F-Nipple, 2-7/8" 6.4# J-55, NUE 10 RD Production Tbg as follows: 1- 2-7/8" 6.5#, J-55, EUE 8RD Mud Anchor & Screen, 1- 2-7/8" X 2.28 X2-7/8" "F"-Nipple, 1- 10' 2-7/8" 6.5# J-55 EUE 8RD Pup Jt, 1- 2-7/8" EUE 8rd to 2-7/8" NUE 10RD X-Over, 123 - 2-7/8", 6.4#, J-55 NUE 10RD Prod. Tbg., 1- 2-7/8" EUE 8RD to 2-7/8" NUE 10RD X-Over. EOT @ 3944', - 2.28 I.D. F-Nipple @ 3918'. -- Test Tbg to 1000 PSI, Test Good. TIH w/ sand line fish standing valve. -- TOOH w/ 3 stands and 6' pup. Run 200' Chem. Cap String. -- RD Floor and NU BOP's, MU SR head, Test Head, Test good. -- Secure well & Equipment, SIFN, No Accidents Reported.

05-31-2009

Recap: Crew travel from Aztec Yard to Rosa Unit 311A. -- SICP 20 PSI, Bleed down 2" line to pit. Safety meeting w/ crew and air hands. Check and start Equipment. -- PU Equipment and load on trailer for move. Air hand RD hard line and Equipment. -- PU MU & RIW as follows, 1" X 6' Gas anchor, 2-1/2" X 1-1/4" X 8 X 12 RHAC pump, 8 - 1-1/2" HF sinker bars, 77 - 3/4" FST rods, 71 - 3/4" FST 2-1/2" guided rods 5 per rod, 6' - Pony rod & 1-1/4" X 22' polish rod w/ 10' X 1-1/2" liner. -- Install stuffing box, seat pump & Space out pump, load tbg w/ produced water, test tbg & pump to 500 psig, release pressure, stroke pump to 500 psig. Test good. Stroke pump to 500 psig. Test good. -- RD surface equipment, lower derrick, prepare for rig move. Secure well & equipment, No accidents reported. -- FINAL REPORT FOR ROSA 311A, JOB COMPLETE

ROSA UNIT #311A
BASIN FRUITLAND COAL

Surface Location:

710' FNL & 820' FEL
NE/4 NE/4 Sec 33 (A), T31N, R4W
Rio Arriba, NM

Bottom Hole Location:

749' FSL & 839' FEL
SE/4 SE/4 Sec 28 (P), T31N, R4W
Rio Arriba, NM

Elevation: 6739' GR
API # 30-039-30441

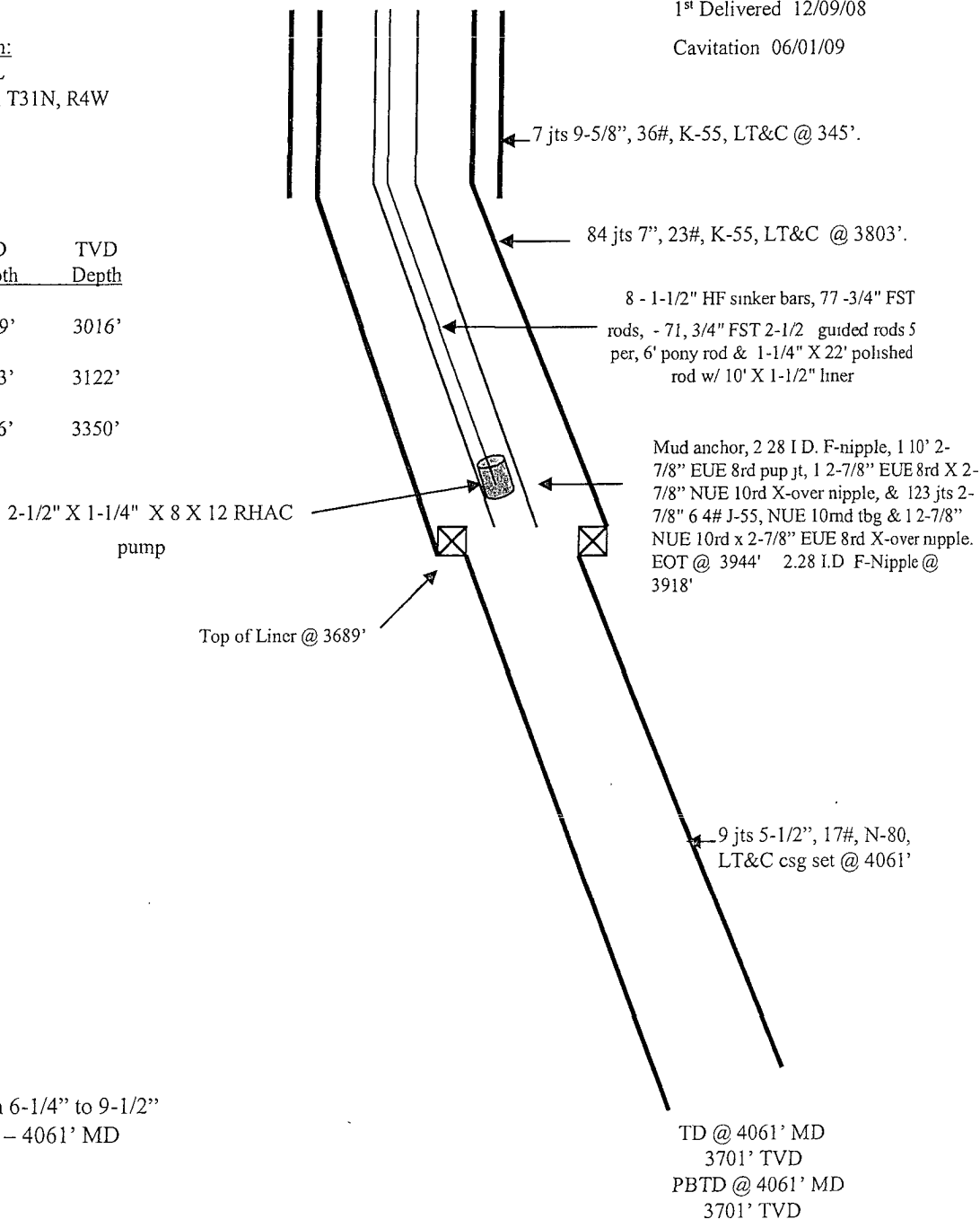
Spud: 10/17/08

Completed: 10/31/08

1st Delivered 12/09/08

Cavitation 06/01/09

Top	MD Depth	TVD Depth
Ojo Alamo	3279'	3016'
Kirtland	3403'	3122'
Fruitland	3666'	3350'



Hole Size	Casing	Cement	Volume	Top of Cmt
12-1/4"	9-5/8", 36#	150 sxs	207 cu ft.	Surface
8-3/4"	7", 23#	540 sxs	1089 cu.ft.	Surface
6-1/4"	5-1/2"	none		