

OIL CONSERVATION DIVISION

1220 South St. Francis Dr.

Santa Fe, NM 87505

WELL API NO.

30-039-06255

5. Indicate Type of Lease

STATE ☒FEE ☐

6. State Oil & Gas Lease No.

E-291-35

7. Lease Name or Unit Agreement Name

Johnston A Com B

8. Well Number

6

9. OGRID Number

14538

10. Pool name or Wildcat

Basin FC/FS

SUNDRY NOTICES AND REPORTS ON WELLS
(DO NOT USE THIS FORM FOR PROPOSALS TO DRILL OR TO DEEPEN OR PLUG BACK TO A DIFFERENT RESERVOIR. USE "APPLICATION FOR PERMIT" (FORM C-101) FOR SUCH PROPOSALS.)

1. Type of Well:

Oil Well ☐Gas Well ☒

Other

2. Name of Operator

BURLINGTON RESOURCES OIL & GAS COMPANY LP

3. Address of Operator

PO Box 4298, Farmington, NM 87499

4. Well Location

Unit Letter E : 1500 feet from the North line and 890 feet from the West lineSection 36 Township 26N Range 6W NMPM Rio Arriba

11. Elevation (Show whether DR, RKB, RT, GR, etc.)

12. Check Appropriate Box to Indicate Nature of Notice, Report or Other Data

NOTICE OF INTENTION TO:

PERFORM REMEDIAL WORK ☐TEMPORARILY ABANDON ☒PULL OR ALTER CASING ☐DOWNHOLE COMMINGLE ☐PLUG AND ABANDON ☐CHANGE PLANS ☐MULTIPLE COMPL ☐OTHER: ☐

SUBSEQUENT REPORT OF:

REMEDIAL WORK ☐COMMENCE DRILLING OPNS. ☐CASING/CEMENT JOB ☐ALTERING CASING ☐P AND A ☐OTHER: ☐

13. Describe proposed or completed operations. (Clearly state all pertinent details, and give pertinent dates, including estimated date of starting any proposed work). SEE RULE 1103. For Multiple Completions: Attach wellbore diagram of proposed completion or recompletion.

RCVD JUN 16 '09

OIL CONS. DIV.

DIST. 3

Burlington Resources wishes to TA this well per the attached procedures and well bore schematic.

SPUD DATE:

6/30/1958

RIG RELEASE DATE:

I hereby certify that the information above is true and complete to the best of my knowledge and belief.

SIGNATURE

TITLE

Regulatory Technician

DATE

6/15/2009

Type or print name

Rhonda Rogers

E-mail address:

rrogers@conocophillips.com

PHONE:

505-599-4018

For State Use Only

APPROVED BY

TITLE

Deputy Oil & Gas Inspector,
District #3

DATE

JUN 19 2009

Conditions of Approval (if any):

CHART RECORDER TO HAVE A 1000 * MAXIMUM SPRING.
NOTIFY NMED AZTEC 24 HOURS PRIOR TO BEGINNING OPERATIONS

by

PC

ConocoPhillips
JOHNSTON A COM B 6 (FTC)
Temporary Abandonment

Lat 36° 26' 46.68" N

Long 107° 25' 28.128" W

Prepared by: David McDaniel
Peer Review/approved by:

Date: 04/29/09
Date:

Scope of Work: Pull rods, pump and tubing, clean out to CIBP above PC, run logs, conduct a MIT, and TA the entire wellbore.

Est. Rig Days: 4
Est. Uplift: 0 MCFD

Area: 26
Formation: FTC

Route: 653

WELL DATA

API: 3003906255

Spud Date: 6/30/1958

LOCATION: 1500' FNL & 890' FWL, Spot E, Section 36 -T 026N - R 006W

PBTD: 2860'

Total Depth: 2957'

TBG Depth: 2844'

KB: 10'

BTM Perf: 2828'

EOT to PBTD: 16'

BTM Perf to PBTD:

32'

Perforations: 2670'-2828' (FTC)

Tubular	OD	Weight	Grade	Connection	ID	Drift ID	Depth
Casing	8 5/8"	24	J-55	STC	8.097	7.972	127'
Casing	5 1/2"	15.5	J-55	STC	4.95	4.825	2957'
Tubing	2 3/8"	4.7	J-55	EUE	1.995	1.901	2819'
Lifting Sub	2 3/8"						2822'
Tubing Pump	2 3/8"						2835'
Mud_Anchor	2 3/8"						2844'

Well History/Justification

Spud 6/30/1958 the Johnston A Com B Unit 6 was completed as a stand alone PC well. In 2005 a casing leak from 162' to 193' was repaired, a CIBP was set @ 2850', and the PC was abandoned. In 2007 the well was completed in the Fruitland coal and sands. Since the recompletion in the Fruitland, the well has never produced any gas, just 140 BWPD till October 2008 when the pumping unit was shut in. The well is currently on the demand well list for the second time, and action needs to be taken. RAM plans on putting together a drilling/recompletion project in the next couple of years to develop the coal in this area and therefore, recommends running Weatherford PND/CBL logs to better distinguish the coal, locate gas and water bearing zones and look for any water that might be coming from above the Fruitland and behind the cement. This information will aid in the planning of the future development.

Recommendation

In order to get the well off of demand well status, it is recommended to run Weatherford PND/CBL logs, conduct a MIT and then TA the wellbore until further development of the coal in this area occurs.

Bradenhead Failure/History

No failures to date.

B2 Adapters are required on all wells other than pumping wells.

Artificial lift on well (type): Rod Pump **Est. Reservoir Pressure (psia):** 1070 (FTC)

Well Failure Date: N/A **Earthen Pit Required:** NO

Current Rate: 0 MCFD **Est. Rate Post Remedial:** 0 MCFD

Special Requirements: Several joints of 2-3/8" tubing, 4-3/4" bit, 5-1/2" CIBP and packer, 2 hour chart for MIT.

H2S: 0 ppm

CO2 Corrosion: 0 - 7 psi - No Corrosion

Contacts	Name	Office #	Cell #
PE Production Engineer	David McDaniel	326-9840	215-4616
PE Backup	Paul Nguyen	599-3432	320-1254
MSO	Augustine Gomez		320-1464
Spec	Mark Mcknight		320-2649
Area Foreman	Cary Green	324-5105	320-2636

Additional Contacts			
Weatherford Wireline Services	Steve Hash	564-9131	486-4762
Weatherford Wireline Services	Mike Nix	564-9131	486-0245

ConocoPhillips
JOHNSTON A COM B 6
Temporary Abandonment

Lat 36° 26' 46.68" N

Long. 107° 25' 28.128" W

PROCEDURE

1. Hold pre-job safety meeting. Comply with all NMOCD, BLM, and COPC safety and environmental regulations. Test rig anchors prior to moving in rig. Note: Notify NMOCD 24 hours before conducting MIT.

2. MIRU. Check casing, tubing, and bradenhead pressures and record them in Wellview. RU relief line and blow well down. Kill well with 2% KCL if necessary.

3. Pressure test tubing to 1000 psi before unseating the pump.

4. TOOH and LD rods and pump (details below).

Number	Description
1	1-1/4" x 26' Polished Rod
1	3/4" pony rod
109	3/4" grade D sucker rods
2	1-1/4" x 25' sinker bars
1	1-1/4" shear coupling
1	1-1/4" x 25' sinker bars
1	1-3/4" tubing pump

5. ND wellhead, NU BOP. Release tubing hanger and tag for fill, PU additional joints as needed. Tubing is landed @ 2844', PBTD @ 2860'. Record fill depth in Wellview.

6. TOOH with tubing (details below).

Number	Description
1	2-3/8" 4.70# J-55 EUE tubing joint
1	2-3/8" 4.70# J-55 pup joints (6')
89	2-3/8" 4.70# J-55 EUE tubing joints
1	3000 psi tubing drain
1	2-3/8" 4.70# J-55 EUE tubing joint
1	Lifting sub
1	2-3/8" x 1-3/4" x 12' x 15' tubing pump
1	2-3/8" bull plug

Visually inspect tubing and record findings in Wellview. Make note of corrosion or scale. LD and replace any bad joints. If scale or paraffin is present, contact engineer so the chemical company can pick up a sample.

7. PU and TIH with 4-3/4" bit on 2-3/8" tubing. Clean out to CIBP @ 2860'. TOOH and LD bit.

8. Rig up Weathford logging truck. Run PND/CBL logs.

9. PU and TIH with 5-1/2" packer. Set packer @ 2833' (just below bottom FC perf). Load hole with 2% KCl water with corrosion inhibitor. Test casing between perfs to 500 psi for 30 min and record on a 2 hour chart. TOOH and LD packer. 1000 # SPRING MAX ON CHART RECORDER

10. PU and TIH with 5-1/2" CIBP. Set CIBP @ 2620' (50' above top FC perf). Load hole with 2% KCl water with corrosion inhibitor. Test casing to surface to 500 psi for 30 min and record on a 2 hour chart. TOOH and LD tubing. Note: CIBP must be 50' above top FC perf. 1000 # SPRING MAX ON CHART RECORDER

11. ND BOP. NU wellhead. Notify MSO that the rig work is complete. RDMO.

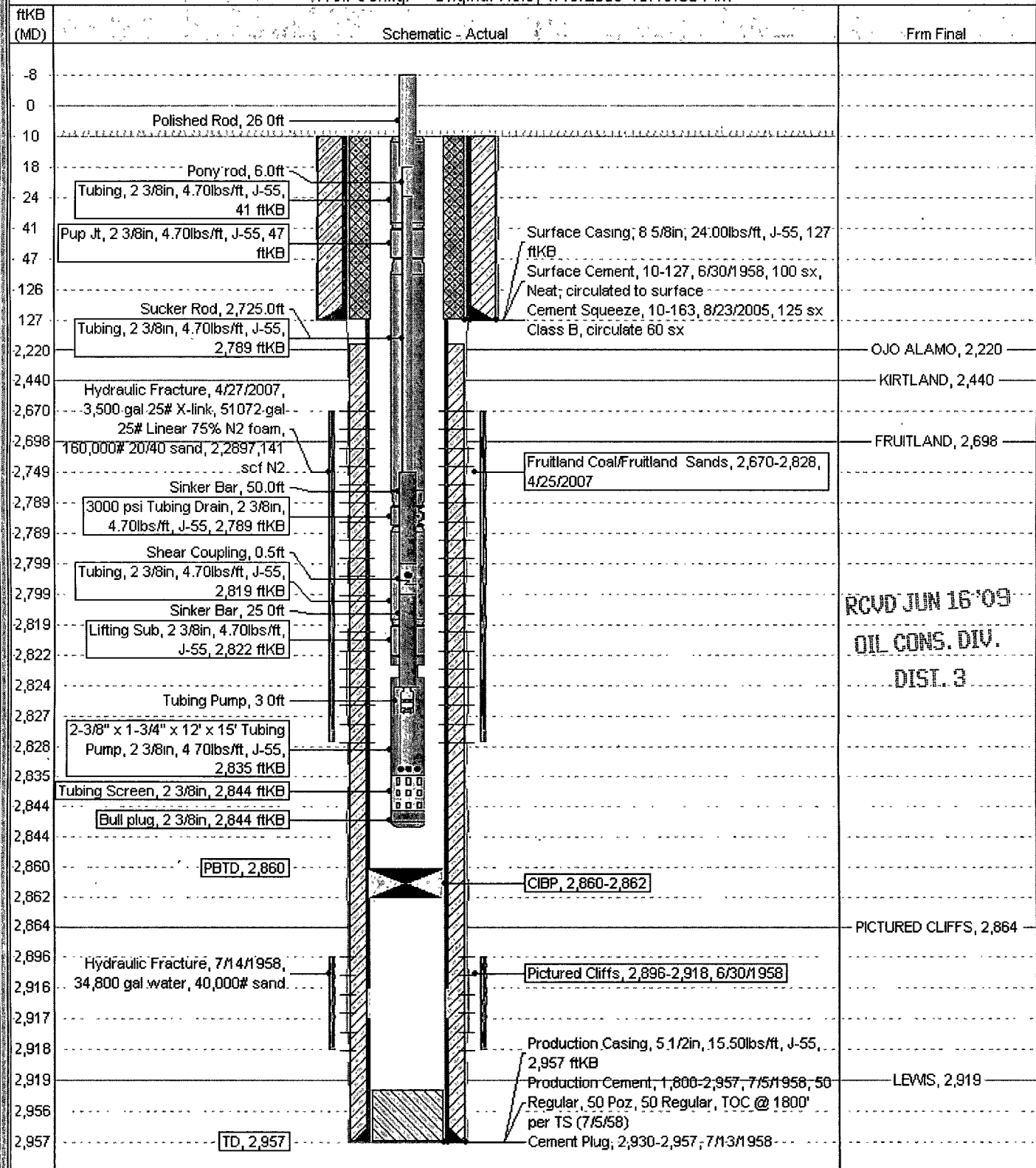
Current Schematic

ConocoPhillips

Well Name: JOHNSTON A COM B #6

API/UNW	Surface Legal Location	Field Name	License No.	State/Province	Well Configuration Type	Edit
3003906255	NMPM,036-026N-006W	BLANCO P.C. SOUTH (GAS)		NEW MEXICO		
Ground Elevation (ft)	Original KB/RT Elevation (ft)	KB-Ground Distance (ft)	KB-Casing Flange Distance (ft)	KB-Tubing Hanger Distance (ft)		
6,618.00	6,628.00	10.00	6,628.00	6,628.00		

Well Config. - Original Hole, 1/19/2009 10:19:55 AM



RCVD JUN 16 '09
OIL CONS. DIV.
DIST. 3