

UNITED STATES  
DEPARTMENT OF INTERIOR  
BUREAU OF LAND MANAGEMENT

RECEIVED

JUN 08 2009

FORM APPROVED  
Budget Bureau No. 1004-0135

SUNDRY NOTICE AND REPORTS ON WELLS

Do not use this form for proposals to drill or to deepen or reentry to a different reservoir.  
TO DRILL" for permit for such proposals

Bureau of Land Management  
APPLICATION

5. Lease Designation and Serial No.  
SF-078764

6. If Indian, Allottee or Tribe Name

SUBMIT IN TRIPLICATE

1. Type of Well  
Oil Well ☒ Gas Well ☐ Other ☐

2. Name of Operator  
WILLIAMS PRODUCTION COMPANY

3. Address and Telephone No.  
PO BOX 3102 MS 25-4, TULSA, OK 74101 (918) 573-3046

4. Location of Well (Footage, Sec., T., R., M., or Survey Description)  
800' FNL, 990' FEL, SW/4 NE/4, SEC 20, T31N, R5W

7. If Unit or CA, Agreement Designation  
Rosa Unit

8. Well Name and No.  
Rosa Unit #85

9. API Well No.  
30-039-22778

10. Field and Pool, or Exploratory Area  
BLANCO MV/BASIN DK

11. County or Parish, State  
Rio Arriba, NM

CHECK APPROPRIATE BOX(S) TO INDICATE NATURE OF NOTICE, REPORT, OR OTHER DATA

TYPE OF SUBMISSION

☒ Notice of Intent

☒ Subsequent Report

☐ Final Abandonment

TYPE OF ACTION

☐ Abandonment

☐ Recompletion

☐ Plugging Back

☐ Casing Repair

☐ Altering Casing

☒ Other Commingling

☐ Change of Plans

☐ New Construction

☐ Non-Routine Fracturing

☐ Water Shut-Off

☐ Conversion to Injection

☐ Dispose Water

(Note: Report results of multiple completion  
on Well Completion or Recompletion Report  
and Log form.)

13. Describe Proposed or Completed Operations (Clearly state all pertinent details, and give pertinent dates, including estimated date of starting any proposed work. If well is directionally drilled, give subsurface locations and measured and true vertical depths for all markers and zones pertinent to this work.)\*

RCVD JUN 18 '09

OIL CONS. DIV.

DIST. 3

- i. Pre-approved Pool Division Order R-11363.
- ii. Pools to be commingled: Blanco MV 72319, Basin Dakota 71599.
- iii. Perforated intervals: Blanco MV 5545' - 5892', Basin Dakota 7981' - 8074'.
- iv. Fixed percentage allocation based upon production data of 30% Blanco MV and 70% Basin Dakota. See attached information for details. This allocation may be adjusted at a later date based on further testing.
- v. Commingling will not reduce the value of reserves.
- vi. Notification of working, royalty, and overriding royalty interest owners; no notice is required per R-12991.
- vii. The BLM has been notified and has approved the work on sundry notice form 3160-5.

Please see attached for commingling procedure:

0 Hc 3160 AZ

14. I hereby certify that the foregoing is true and correct

Signed

Rachel Lippert  
Rachel Lippert

Title Engineering Technician II

Date June 4, 2009

(This space for Federal or State office use)

Approved by

Joe Hemmitt

Title

Geo

Date

6-15-09

Conditions of approval, if any:

Title 18 U.S.C. Section 1001, makes it a crime for any person knowingly and willfully to make to any department or agency of the United States any false, fictitious or fraudulent statements or representations as to any matter within its jurisdiction.

MMOCD



EXPLORATION & PRODUCTION

## COMMUNICATION REPAIR & COMMINGLING PROCEDURE

**ROSA #85**  
**T31N, R5W, SECT. 20**  
**ELEVATION: 6441' GR**  
**TD: 8086' MD**

### WELLBORE STATUS:

DK 1-1/2", 2.9 #/FT EUE, To 8076' MD

5-1/2" BAKER MODEL D PACKER @ 6100' MD

MV 1-1/4", 2.3 #/FT IJ, To 5774' MD

ESTIMATED DK SIBHP = 350± PSIG

ESTIMATED MV SIBHP = 165± PSIG

ESTIMATED DK SIBHT = 210± °F

ESTIMATED MV SIBHT = 165± °F

### OBJECTIVE: Remove failed packer and commingle MV and DK

- 1) MIRU, kill, ND tree, & NU BOP's.
- 2) POOH with tubing on both strings.
- 3) Mill out packer.
- 4) Clean out fill to PBTD @ 8086' MD.
- 5) RIH with 2-3/8 and hang-off commingled string @ ~8040' MD.
- 6) ND BOP's & NU tree.
- 7) Test well to make certain tubing is not plugged.
- 8) Release rig.
- 9) Return to production.

### **PRIOR TO PRIMARY JOB**

- 1) Test rig anchors.
- 2) Verify location is OK for rig operations.
- 3) Ensure JSA, ECP's and lockout procedures are in place for the flowline and other energized piping or equipment.
- 4) Acquire 8100' of 2-3/8" N-80 or stronger work string.
- 5) Acquire ~8040' of 2-3/8", eue, 8rd, 6.5 #/ft J-55 tubing.
- 6) Locate and have on 1-1/4" IJ slip grip elevators.
- 7) Acquire wellhead and convert from dual tubing string to a single, 2-3/8" tubing string.
- 8) Acquire 2-3/8", I.D. Type X or XN type nipple.
- 9) **KCL** on location to treat kill water as needed.

### **SAFETY NOTICE**

PERSONNEL SAFETY IS THE NUMBER ONE JOB.  
NO EXCEPTIONS!!!  
**PLEASE FOLLOW APPROPRIATE WILLIAMS CONTRACTOR  
PROTOCOLS FOR THIS JOB PLAN**

Please see your Williams Business Representative if you have any questions; Contractor protocols can be located in the Williams E&P Contractor Guide

## **COMMUNICATION REPAIR & COMMINGLING PROCEDURE**

### **ROSA #32B DK AND MV**

### **PRIMARY JOB**

**Note:** Safety meetings shall be held each morning before work and subsequent "tailgate" safety meetings are to be held during the day when operation objectives shift in nature and intent (i.e. beginning/ending fishing operations, squeeze jobs, rigging down, perforating, etc.) Please ensure these are documented per section 2.2.7 of the Williams E&P Contractor Guide

1. MI and spot equipment to include fluid pumps and tanks.
2. MIRU.
3. ND/NU killing well with KCL water as necessary

4. Test the BOP's to 2500 psig minimum. If they fail, then rebuild and retest. If they cannot pass tests DO NOT PROCEED and notify Production Engineer.
5. Pick up on DK long string to determine if the long string will pull.
6. If long string will POOH from step #5 above, then POOH with MV short string and proceed to step # 7. If the long string will not POOH, proceed with sub-steps 6.1 through 6.3 below:
  - 6.1. POOH with short string one or two joints to confirm ability to move.
  - 6.2. Pick up additional joints of 1-1/2" pipe and wash to top of packer at 6100' using heavy air mist. Wash as necessary until returns clean up to approximately ¼ cup of sand in 5 gallons of water returns.
  - 6.3. After returns clean up, POOH with pipe laying down string.
7. Spear or screw in and POOH with 1-1/2" 2.9 #/ft DK (long string) string using straight pull to pull out of Baker Model D packer seal assembly up to 40,000 #'s.
8. POOH with lay down tubing 1-1/2" 2.9# J-55 and seal assembly.
9. NU additional pipe ram for work string or replace pipe ram with annular preventer.
10. Pick up work string.
11. Pick up Baker Model D packer millover & pulling tool, using DC's and assembly as necessary and RIH on work string to mill over Baker Model D packer @ 6100' MD and RIH on work string. If work string not inspected prior to work do not exceed 70% of joint strength of the work string pipe when pulling.
12. Millover and attempt to pluck Baker Model D packer at 6100' MD. If using 4.7 #/ft work string, weight of dry string above packer is 28.7k #s. If using 6.5 #/ft work string, dry string weight will be 39.7k #s. When attempting to pull packer and tail pipe determine work string weight and do not pull more than 70% of joint strength.
13. POOH with packer and lay down work string, tools and packer.
14. RIH workstring.
15. Clean out to 8086' PBTD, TOO H w/ work string.
16. RIH with mule shoe, 2.3" minimum ID X nipple, TBG hang off EOT at ~8040'
17. N/D BOP's and N/U wellhead.
18. Return well to production.
19. R/D, move off location.
20. Notify pumper on route to place well on test.



Exploration & Production

**Production Allocation Recommendation**  
**ROSA UNIT #85**  
**BLANCO MV/BASIN DK**

|                  |                                |                |              |
|------------------|--------------------------------|----------------|--------------|
| <b>WELLNAME:</b> | Rosa Unit #85                  | <b>FIELD:</b>  | San Juan     |
| <b>LOCATION:</b> | SW NE NE Section 20, T31N, R5W | <b>COUNTY:</b> | Rio Arriba   |
| <b>API No.:</b>  | 30-039-22778                   | <b>Date:</b>   | May 21, 2009 |

**Current Status:** The Rosa #85 is currently a dual completion well producing from the Dakota and Mesaverde formations. The packer unit at 6100' has failed. Packer repair would be mandatory. The Production Optimization and Enhancement Team recommends commingling this well instead.

**Commingle Procedure:**

- Mesa Verde tubing will be pulled
- Dakota tubing will be pulled
- Production packer will be removed
- Well will be cleaned out to PBTD
- A single string of 2-3/8" tubing will be run to ~8076'
- One set of wellhead facilities will be removed
- Well will be produced as a MV/DK commingle

**Allocation Method:** Historic production data from both zones on this well was gathered and analyzed. Monthly production data from January 2005 through January 2006 was considered as this represented a time when both zones appear to be free from loading problems and each zone was producing optimally. During this time the Mesa Verde contributed approximately 30% of the total production of the well, while the Dakota accounted for the remaining 70% during the same time span.

From January 2005 to January 2006

Total Production from well = 39230 Mcf  
Total Production from MV = 11977 Mcf  
Total Production from DK = 27253 Mcf

MV allocation = MV production / Total production = 11977 Mcf / 39230 Mcf = 30%

DK allocation = DK production / Total production = 27253 Mcf / 39230 Mcf = 70%

Lease Name: ROSA UNIT  
County, State: RIO ARBA, NM  
Operator: WILLIAMS PRODUCTION COMPANY  
Field: BLANCO  
Reservoir: MESAVERDE  
Location: 20 31N 5W SW NE NE

ANNUAL PRODUCTION

IN 2005

11977 MCF

TOTAL PRODUCTION

2005 = 39230

ROSA UNIT - BLANCO



Lease Name: ROSA UNIT  
County, State: RIO ARBA, NM  
Operator: WILLIAMS PRODUCTION COMPANY  
Field: BASIN  
Reservoir: DAKOTA  
Location: 20 31N 5W SW NE NE

ANNUAL PRODUCTION

IN 2005

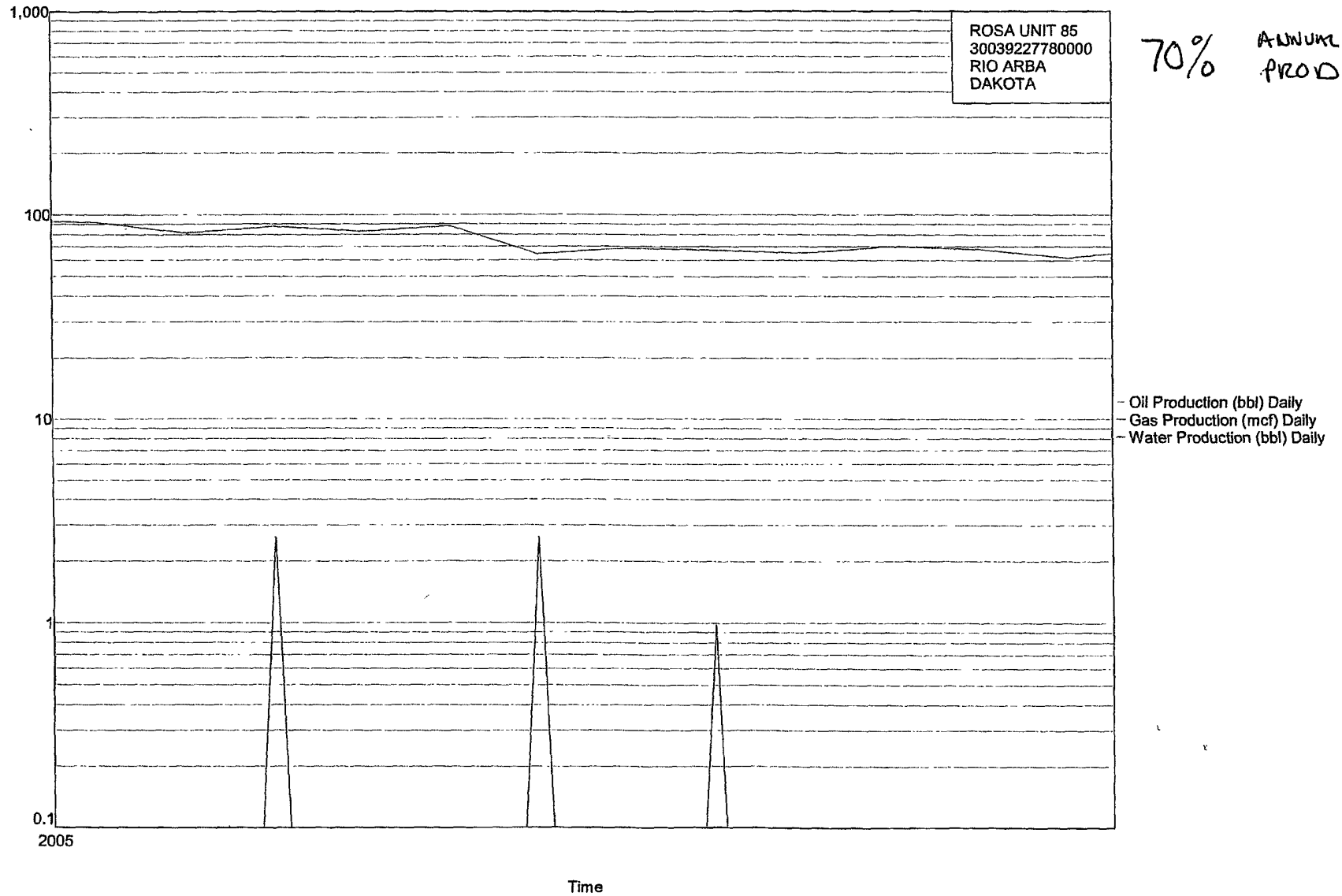
27253 MCF

TOTAL PROD IN 2005

= 39230

ROSA UNIT - BASIN

Production Rates



# ROSA UNIT #85 BLANCO MV/BASIN DK

Location:

800' FNL and 990' FEL  
SW/ NE/NE Sec 20, T31N R05W  
Rio Arriba, New Mexico

Elevation: 6441' GR  
API #: 30-039-22778  
KB = 12'

Spud date: 7-2-1981

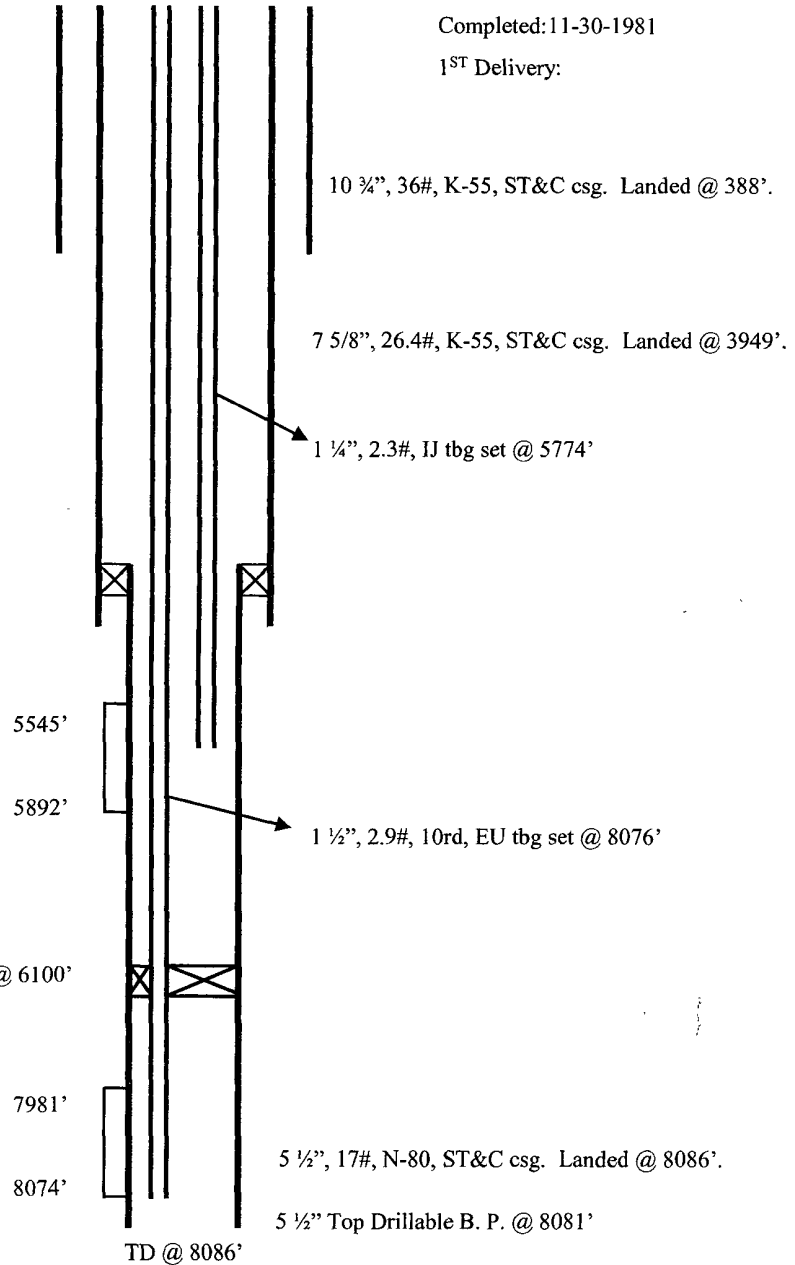
Completed: 11-30-1981

1<sup>ST</sup> Delivery:

Top                      Depth

Point Lookout      5545'

Dakota              7981'



| Hole Size | Casing        | Cement | Volume | Top of CMT |
|-----------|---------------|--------|--------|------------|
| 12-1/4"   | 10-3/4", 36#  | 230 sx |        | surface    |
| 9-7/8"    | 7-5/8", 26.4# | 160 sx |        | 2641       |
| 6-1/4"    | 5-1/2", 117#  | 190 sx |        | 3300       |