

"As Drilled"

DISTRICT I
1625 N. French Dr., Hobbs, N.M. 88240

DISTRICT II
1301 W. Grand Ave., Artesia, N.M. 88210

DISTRICT III
1000 Rio Brazos Rd., Aztec, N.M. 87410

DISTRICT IV
1220 South St Francis Dr., Santa Fe, NM 87505

State of New Mexico
Energy, Minerals & Natural Resources Department

OIL CONSERVATION DIVISION

1220 South St. Francis Dr.
Santa Fe, NM 87505

Form C-102
Revised October 12, 2005

Submit to Appropriate District Office
State Lease - 4 Copies
Fee Lease - 3 Copies

☐ AMENDED REPORT

WELL LOCATION AND ACREAGE DEDICATION PLAT

¹ API Number 30-045-34583	² Pool Code 71599, 99232 72319, 82329	³ Pool Name Basin DK / Basin MC / Blanco mV / Otero CH
⁴ Property Code 22634	⁵ Property Name SCHWERTFEGER A	⁶ Well Number 6G
⁷ OGRID No 5380	⁸ Operator Name XTO ENERGY INC.	⁹ Elevation 6757

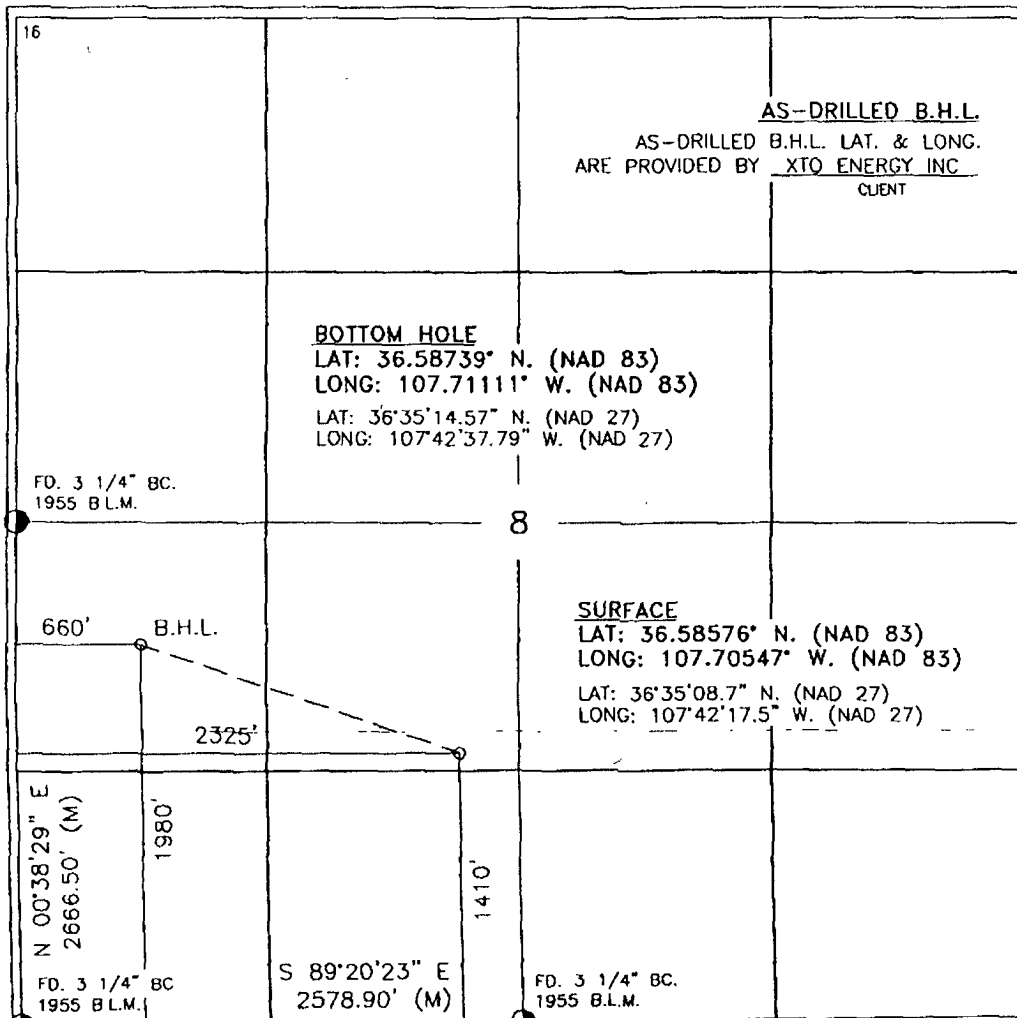
¹⁰ Surface Location

UL or lot no.	Section	Township	Range	Lot Idn	Feet from the	North/South line	Feet from the	East/West line	County
K	8	27-N	8-W		1410	SOUTH	2325	WEST	SAN JUAN

¹¹ Bottom Hole Location If Different From Surface

UL or lot no.	Section	Township	Range	Lot Idn	Feet from the	North/South line	Feet from the	East/West line	County
L	8	27-N	8-W		1907 1980	SOUTH	735 660	WEST	SAN JUAN
¹² Dedicated Acres			¹³ Joint or Infill		¹⁴ Consolidation Code		¹⁵ Order No. RCVD JUN 26 '09 OIL CONS. DIV.		

NO ALLOWABLE WILL BE ASSIGNED TO THIS COMPLETION UNTIL ALL INTERESTS HAVE BEEN CONSOLIDATED
OR A NON-STANDARD UNIT HAS BEEN APPROVED BY THE DIVISION **DIST. 3**



17

OPERATOR CERTIFICATION

I hereby certify that the information contained herein is true and complete to the best of my knowledge and belief, and that this organization either owns a working interest or unleased mineral interest in the land including the proposed bottom hole location or has a right to drill this well at this location pursuant to a contract with an owner of such a mineral or working interest, or to a voluntary pooling agreement or a compulsory pooling order heretofore entered by the division

Dolena C Johnson
Signature Date

Dolena Johnson 4/25/09
Printed Name

Reg. Comp. Tech

18

SURVEYOR CERTIFICATION

I hereby certify that the well location shown on this plat was plotted from field notes of actual surveys made by me or under my supervision, and that the same is true and correct to the best of my belief.

OCTOBER 22, 2008
Date of Survey

Roy A. Rush
Signature and Seal of Professional Surveyor

8894

Certificate Number