

Submit 3 Copies To Appropriate District Office  
District I  
1625 N French Dr., Hobbs, NM 88240  
District II  
1301 W Grand Ave., Artesia, NM 88210  
District III  
1000 Rio Brazos Rd., Aztec, NM 87410  
District IV  
1220 S. St Francis Dr., Santa Fe, NM 87505

State of New Mexico  
Energy, Minerals and Natural Resources

Form C-103  
June 19, 2008

OIL CONSERVATION DIVISION  
1220 South St. Francis Dr.  
Santa Fe, NM 87505

WELL API NO. 30-045-32717

5. Indicate Type of Lease

STATE ☐ FEE ☒

6. State Oil & Gas Lease No.

7. Lease Name or Unit Agreement Name

Canepile Gas Com

8. Well Number 1

9. OGRID Number 778

10. Pool name or Wildcat

Blanco Mesaverde

SUNDRY NOTICES AND REPORTS ON WELLS

(DO NOT USE THIS FORM FOR PROPOSALS TO DRILL OR TO DEEPEN OR PLUG BACK TO A DIFFERENT RESERVOIR USE "APPLICATION FOR PERMIT" (FORM C-101) FOR SUCH PROPOSALS)

1. Type of Well: Oil Well ☐ Gas Well ☐ Other ☐

2. Name of Operator

BP America Production Company

3. Address of Operator

P.O. Box 3092 Houston, Tx 77253-3092

4. Well Location

Unit Letter O : 960 feet from the South line and 2245 feet from the East line

Section 18 Township 31N Range 0W NMPM San Juan County

11. Elevation (Show whether DR, RKB, RT, GR, etc.)

5910' GR

12. Check Appropriate Box to Indicate Nature of Notice, Report or Other Data

NOTICE OF INTENTION TO:

PERFORM REMEDIAL WORK ☒ PLUG AND ABANDON ☐

TEMPORARILY ABANDON ☐ CHANGE PLANS ☐

PULL OR ALTER CASING ☐ MULTIPLE COMPL ☐

DOWNHOLE COMMINGLE ☐

SUBSEQUENT REPORT OF:

REMEDIAL WORK ☐ ALTERING CASING ☐

COMMENCE DRILLING OPNS. ☐ P AND A ☐

CASING/CEMENT JOB ☐

OTHER: ☐

OTHER: ☐

13. Describe proposed or completed operations. (Clearly state all pertinent details, and give pertinent dates, including estimated date of starting any proposed work). SEE RULE 1103. For Multiple Completions: Attach wellbore diagram of proposed completion or recompletion.

BP America respectfully requests permission to set a CIBP @7300' in the DK perfs to shut off water production from lower perforations.

Please see the attached procedure. If you have questions please call Anne Hansford @ 281-366-8619

RCVD JUL 14 '09  
OIL CONS. DIV.

DIST. 3

Spud Date:

6/2/2005

Rig Release Date:

I hereby certify that the information above is true and complete to the best of my knowledge and belief.

SIGNATURE Cherry Hlava TITLE Regulatory Analyst DATE 07/13/2009

Type or print name Cherry Hlava E-mail address: Hlavacl@bp.com PHONE: 281-366-4081

For State Use Only

Deputy Oil & Gas Inspector,  
District #3

APPROVED BY: Fally G. Rodriguez TITLE \_\_\_\_\_ DATE JUL 22 2009

Conditions of Approval (if any):

## SJ Basin Well Work Procedure

**Well Name:** Canepile GC 1N– MV/DK

**Date:** July 10, 2009

**Repair Type:** Well Servicing

---

**Pertinent Information:** Gas BTU content for this well is 1116 on 1/4/2009; specific gravity is 0.6514. Venting and Flaring document needs to be followed if BTU content is above 950.

---

<b>Location:</b>	<b>T31N-R10W-Sec18</b>	<b>API #:</b>	<b>30-045-32717</b>
<b>County:</b>	San Juan		
<b>State:</b>	New Mexico	<b>Engr:</b>	Anne Hansford
<b>Horizon:</b>	MV/DK	<b>Ph:</b>	281-366-8619
<b>CO2 :</b>	1.87%	<b>Cell :</b>	713-540-3386
<b>H2S:</b>	NO		

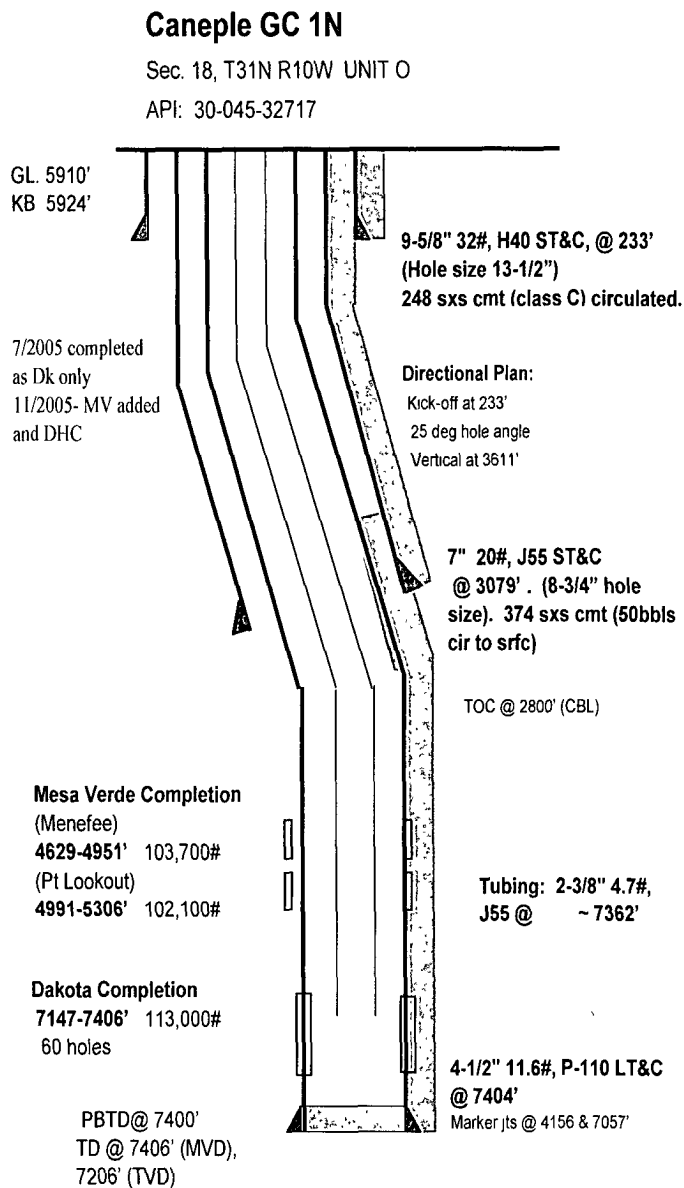
---

**Procedure:**

1. MIRU workover rig.
2. Hook up casing and tubing valves. Blow down well.
3. RU slickline unit or wireline unit. Pressure test lubricator and equipment. **Install 2-way check valve with lubricator in tubing hanger as second barrier. (will not be able to set second barrier due to junk in hole.**
4. RU slickline unit or wireline unit. Pressure test lubricator and equipment.
5. RIH with gauge ring and tag junk. Then RIH with tubing broach to ensure no tight spots to 3500'.
6. TIH with G-pack off tubing plug assembly and set at 2000' (follow Best Practice procedure outlined by BP). Do not kill well with 2% KCL if possible.
7. NU BOPs and diversion spool with 3" outlets and 3" pipe to the blow tank. Pressure test BOPs. Monitor flowing casing pressure with gauge (with casing flowing to blow tank) throughout workover.
8. Pull tubing hanger and shut pipe rams. **Pick up and install lubricator and pull 2-way check valve, remove tubing hanger, screw on tubing collar, then install stripping rubber.**
9. TOH with 2-3/8" production tubing currently set at **7362'** using approved "Under Balance Well Control Tripping Procedure". (Note why swab tools are stuck and remove tools.)
10. RIH with CIBP and set at **7300'** (+/-). Ensure plug is not set opposite a casing collar. Next set of perforations start at 7317' – 7373' (want to isolate these sets of perfs)
  - Perforations**
  - i. **7148' – 7194'**
  - ii. **7200' – 7258'**
  - iii. **7270' – 7297'**
  - iv. **SET CIBP**
  - v. **7317' – 7373'**

11. TIH with existing 2-3/8" tubing. Reference "Under Balanced Well Control Tripping Procedure".

12. Land 2-3/8" production tubing at +/- 7270'. Lock down hanger.



**NOTES 6-22-09**

All Mvin surround area produce normal water  
MV/DK - produce abnormally high water amts

1N is perforated into the Lower Dk unlike 1M

Plan would be to set a CIBP in between (7296' and 7317')  
of (7322' and 7351') so to shut off encinol or burro  
canyon water  
Land tubing @ 7260'

**Formation tops**

Cliffhouse	4303'
Menfee	4558'
PTLO	4989'
Mancos	5305'
Greenhorn	7018'
Two well	7133'
Paquate	7226'
Up Cubero	7262'
L cubero	7304'
Encinol	7368'

Well produces 1-2 bbl/d of water  
Share a pit

Updated: 6/17/09 AH

**PROPOSED SCHEMATIC**

# Canepa GC 1N

Sec. 18, T31N R10W UNIT O

API: 30-045-32717

GL: 5910'  
KB: 5924'

7/2005 completed  
as Dk only  
11/2005- MV added  
and DHC

9-5/8" 32#, H40 ST&C, @ 233'  
(Hole size 13-1/2")  
248 sxs cmt (class C) circulated.

## Directional Plan:

Kick-off at 233'  
25 deg hole angle  
Vertical at 3611'

7" 20#, J55 ST&C  
@ 3079' . (8-3/4" hole  
size). 374 sxs cmt (50bbbls  
cir to srfc)

TOC @ 2800' (CBL)

## Mesa Verde Completion

(Menefee)

4629-4951' 103,700#

(Pt Lookout)

4991-5306' 102,100#

## Dakota Completion

7147-7406' 113,000#

60 holes

CIBP  
@ 7300'

PBTD @ 7400'  
TD @ 7406' (MVD);  
7206' (TVD)

Tubing: 2-3/8" 4.7#,  
J55 @ ~ 7270'

4-1/2" 11.6#, P-110 LT&C  
@ 7404'

Marker jts @ 4156 & 7057'

Updated: 6/17/09 AH