

District I
1625 N French Dr , Hobbs, NM 88240
District II
1301 W Grand Avenue, Artesia, NM 88210
District III
1000 Rio Brazos Road, Aztec, NM 87410
District IV
1220 S St Francis Dr , Santa Fe, NM 87505

State of New Mexico
Energy Minerals and Natural Resources

Form C-101
June 16, 2008

Oil Conservation Division
1220 South St. Francis Dr.
Santa Fe, NM 87505

Submit to appropriate District Office

☐ AMENDED REPORT

**APPLICATION FOR PERMIT TO DRILL, RE-ENTER, DEEPEN,
PLUGBACK, OR ADD A ZONE**

¹ Operator Name and Address CIMAREX ENERGY CO. 1700 LINCOLN ST., SUITE 1800, DENVER, CO 80203-4518		² OGRID Number 215099
		³ API Number 30 - 045- 35008
³ Property Code 37753	⁵ Property Name BOARDWALK 11	⁶ Well No 1
⁹ Proposed Pool 1 WC21N09W11; ENTRADA OIL		¹⁰ Proposed Pool 2

7 Surface Location

UL or lot no H	Section 11	Township 21 N	Range 9 W	Lot Idn	Feet from the 1663	North/South line NORTH	Feet from the 357	East/West line EAST	County SAN JUAN
--------------------------	----------------------	-------------------------	---------------------	---------	------------------------------	----------------------------------	-----------------------------	-------------------------------	---------------------------

8 Proposed Bottom Hole Location If Different From Surface

UL or lot no	Section	Township	Range	Lot Idn	Feet from the	North/South line	Feet from the	East/West line	County
--------------	---------	----------	-------	---------	---------------	------------------	---------------	----------------	--------

Additional Well Information

¹¹ Work Type Code N	¹² Well Type Code O	¹³ Cable/Rotary ROTARY	¹⁴ Lease Type Code P	¹⁵ Ground Level Elevation 6,514'
¹⁶ Multiple S	¹⁷ Proposed Depth 6,000'	¹⁸ Formation CHINLE	¹⁹ Contractor	²⁰ Spud Date MAY 1, 2009

21 Proposed Casing and Cement Program

Hole Size	Casing Size	Casing weight/foot	Setting Depth	Sacks of Cement	Estimated TOC
12-1/4"	9-5/8"	36 #	320'	175	SURFACE
8-3/4"	5-1/2"	15.5 #	6,000'	1,050	SURFACE

22 Describe the proposed program. If this application is to DEEPEN or PLUG BACK, give the data on the present productive zone and proposed new productive zone. Describe the blowout prevention program, if any. Use additional sheets if necessary.

WILL USE 2,000 # BOP SYSTEM

RCVD JUL 22 '09

OIL CONS. DIV.

DIST. 3

A COMPLETE C-144 MUST BE SUBMITTED TO AND APPROVED BY THE NMOC FOR: A PIT, CLOSED LOOP SYSTEM, BELOW GRADE TANK, OR PROPOSED ALTERNATIVE METHOD, PURSUANT TO NMOC PART 19.15.17, PRIOR TO THE USE OR CONSTRUCTION OF THE ABOVE APPLICATIONS.

23 I hereby certify that the information given above is true and complete to the best of my knowledge and belief.

Signature



Printed name
BRIAN WOOD

Title
CONSULTANT

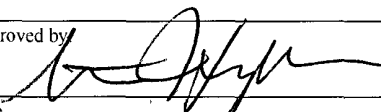
E-mail Address
brian@permitswest.com

Date
3-22-09

Phone
(505) 466-8120

OIL CONSERVATION DIVISION

Approved by



Title

DEPUTY OIL & GAS INSPECTOR, DIST. 3

Approval Date

JUL 27 2009

Expiration Date

JUL 27 2011

Conditions of Approval Attached ☐

JUL 27 2009



District I
1625 N. French Dr., Hobbs, NM 88240
District II
1301 W. Grand Ave., Artesia, NM 88210
District III
1000 Rio Brazos Rd., Aztec, NM 87410
District IV
1220 S. St Francis Dr., Santa Fe, NM 87505

State of New Mexico
Energy, Minerals & Mining Resources Department
OIL CONSERVATION DIVISION
2040 South Pacheco
Santa Fe, NM 87505

Form C - 102
Revised October 12, 2005
Submit to Appropriate District Office
State Lease - 4 Copies
Fee Lease - 3 Copies

☐ AMENDED REPORT

WELL LOCATION AND ACREAGE DEDICATION PLAT

APA Number 30-045-35008	Pool Code 97763	Pool Name WC21N09W11; ENTRADA OIL
Property Code 37753	Property Name BOARDWALK 11	Well Number 1
OGRI No. 215099	Operator Name CIMAREX ENERGY CO.	Elevation 6514'

Surface Location									County
UL or Lot	Sec.	Twp.	Rge.	Lot Ldn.	Feet from >	North/South	Feet from >	East/West	
H	11	21 North	9 West		1663'	North	357'	East	San Juan

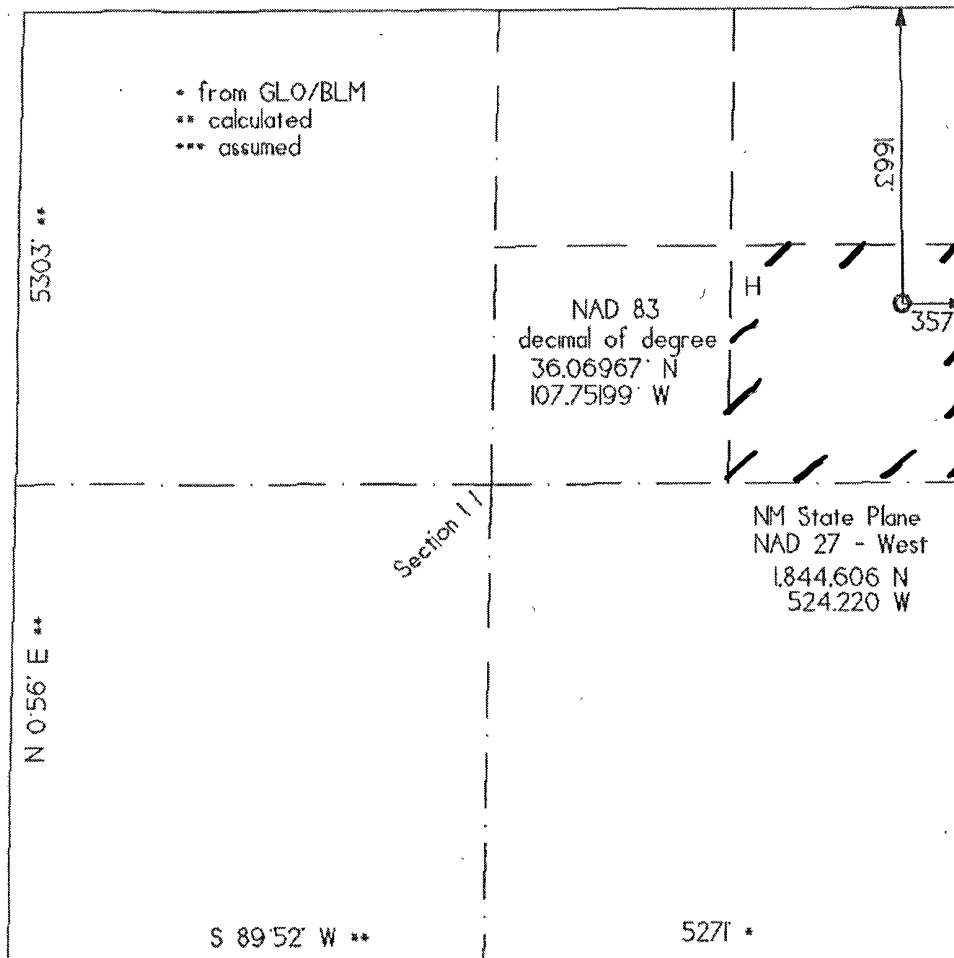
Bottom Hole Location If Different From Surface									County
UL or Lot	Sec.	Twp.	Rge.	Lot Ldn.	Feet from >	North/South	Feet from >	East/West	

Dedicated Acres 40	Joint or Infill	Consolidation Code	Order No.
------------------------------	-----------------	--------------------	-----------

No allowable will be assigned to this completion until all interests have been consolidated or a non-standard unit has been approved by the division.

S 89°38' W **

5249' **



OPERATOR CERTIFICATION
I hereby certify that the information contained herein is true and complete to the best of my knowledge and belief, and that this organization either owns a working interest or unleased mineral interest in the land including the bottom hole location or has a right to drill this well at this location pursuant to a contract with an owner of such a mineral or working interest, or to a voluntary pool agreement or a compulsory pooling order heretofore entered by the division.

Date
MAR. 22, 2009

Signature
Brian Wood

Printed Name
BRIAN WOOD

SURVEYOR CERTIFICATION
I hereby certify that the well location shown on this plat was plotted from field notes of actual surveys made by me or under my supervision, and that the same is true and correct to the best of my belief.

Date of survey
01 29 '09

Signature and Seal of Professional Surveyor

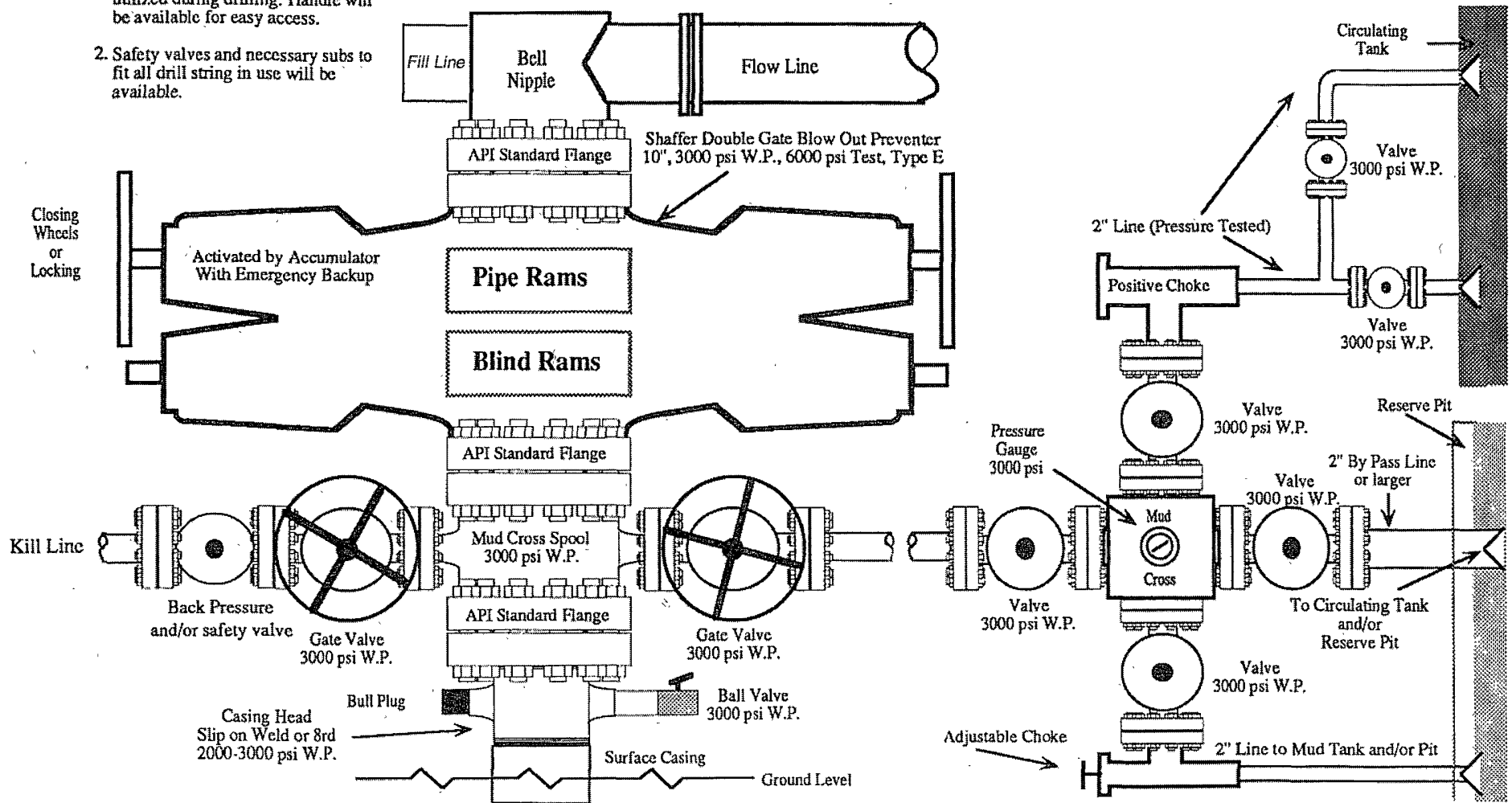
GERALD G. WOODLESTON
NEW MEXICO
6844
REGISTERED PROFESSIONAL SURVEYOR
Gerald G. Woodleston

Certificate Number
6844

2,000 PSI BOP SYSTEM

Note: 1. An upper Kelly cock valve will be utilized during drilling. Handle will be available for easy access.

2. Safety valves and necessary subs to fit all drill string in use will be available.



Note: This equipment is designed to meet requirements for a 2-M rating standard per 43 CFR part 3160 (amended). Proper operation and testing of equipment will be carried out per standard. 2,000 psi equipment can be substituted in the drawing to meet minimum requirements per standard.