

Submit 3 Copies  
To Appropriate  
District Office  
**DISTRICT I**  
P.O. Box 1980, Hobbs, NM 88240

**DISTRICT II**  
811 South First, Artesia NM 88210

**DISTRICT III**  
1000 Rio Brazos Rd., Aztec, NM 87410

State of New Mexico  
Energy, Minerals and Natural Resources Department

**OIL CONSERVATION DIVISION**

2040 South Pacheco  
Santa Fe, NM 87505

Form C-103  
Revised 1-1-89

<b>SUNDRY NOTICES AND REPORTS ON WELLS</b> (DO NOT USE THIS FORM FOR PROPOSALS TO DRILL OR TO DEEPEN OR PLUG BACK TO A DIFFERENT RESERVOIR. USE "APPLICATION FOR PERMIT" (FORM C-101) FOR SUCH PROPOSALS)		WELL API NO.  30-039-22778
1. Type of Well: Oil Well <input type="checkbox"/> Gas Well <input checked="" type="checkbox"/> Other		5. Indicate Type of Lease STATE <input type="checkbox"/> FEE <input type="checkbox"/>
2. Name of Operator  WILLIAMS PRODUCTION COMPANY		6. State Oil & Gas Lease No. SF-078764
3. Address of Operator  P O BOX 3102, MS 25-4, TULSA, OK 74101		7. Lease Name or Unit Agreement Name:  ROSA UNIT
4. Well Location (Surface) Unit letter <u>A</u> : 800 feet from the <u>NORTH</u> line & 990 feet from the <u>EAST</u> line Sec 20-31N-R5W RIO ARRIBA, NM		8. Well No.  #85
10. Elevation (Show whether DF, RKB, RT, GR, etc. 6441' GR		9. Pool name or Wildcat  BLANCO MV/BASIN DK

Check Appropriate Box to Indicate Nature of Notice, Report or Other Data

**NOTICE OF INTENTION TO:**

**SUBSEQUENT REPORT OF:**

PERFORM REMEDIAL WORK	PLUG AND ABANDON WORK	REMEDIAL WORK	ALTERING CASING
TEMPORARILY ABANDON	CHANGE PLANS	COMMENCE DRILLING OPNS.	PLUG AND ABANDONMENT
PULL OR ALTER CASING		CASING TEST AND CEMENT JOB	
OTHER:		X OTHER: <u>COMMINGLE</u>	

RCVD JUL 27 '09  
OIL CONS. DIV.  
DIST. 3

12. Describe proposed or completed operations. (Clearly state all pertinent details, and give pertinent dates, including estimated date of starting any proposed work). Data below to satisfy NM OCD Rule 303.C.3 (b) (i)-(vii)

07-13-2009

Triple S moving all equipment off location. Check and start rig. -- Road rig to New Location, Rosa 85, MI, & Spot Rig and equipment. -- RU Flow back tank to casing, SICP 410 PSI. Bleed down well to Flow back tank, Tbg PSI short string = 390 psi, Tbg PSI long string = 460 psi. -- Raise Derrick. Antelope attempting to set 2 way back pressure valve on long string, tried every way possible. Plug threads going into hanger were off. Unable to go into hanger to set plug, slick line was called to set plug tomorrow. Secure well, SDFN, no accidents reported.

Continued on attached sheets:

I hereby certify that the information above is true and complete to the best of my knowledge and belief.

SIGNATURE Rachel Lippert TITLE: Engineering Technician II DATE: July 24, 2009

Type or print name Rachel Lippert

Telephone No: (918) 573-3046

(This space for State use) APPROVED

BY [Signature] TITLE Deputy Oil & Gas Inspector,

Conditions of approval, if any.

District #3

JUL 28 2009  
DATE

07-14-2009

Check and start equipment, SICP 400 PSI. Phoenix Wireline setting 2 way back pressure valve on long string dual completion @ 150', and 3 slip stop @ 33' unable to get lower w/ tool. Bleed down well to FB tank, ND WH, NU BOPE, sliding spool, and tripping Rubber spool. TU Floor and all Tbg Equipment, tally new 16 Jts 1 1/4" IJ tbg, pull short string out of tbg hanger w/ seal assembly. TIH w/ 11 - new jts 1 1/4" 2/3#, IJ tbg, tagged packer. RU air to tbg and break circ, unable to circ due to pressure coming up to 1550 psi. Pull up on 1 jt of tbg, well came back around. Break circ w/ air only, add mist after air was circ, CO w/ air mist till returns were clean. TOO H w/ 1 1/4" 2.3#, IJ tbg (short string), 11 jts new tbg, 169 jts old tbg, 1 SN, 1 mud anchor. ND sliding spool, change tbg equip on floor to 1 1/2" tbg to pull long string, TOO H w/ tbg hanger, tbg still has not come free. Secure well, SDFN, no accidents reported.

07-15-2009

Check and start equipment, SICP 380 PSI. Pull on 1-1/2" 2.9# 10 RD EU tbg (long string) see if free. Pull up to 28,000# unable to pull tbg Free. Set up Phoenix Services to pull 3 way slip stops, and 2 way back pressure valve. Set up Wireline Specialties, to free point tbg (long string). RU Phoenix Services to pull 3 way slip stops, unable to pull plug. RU wireline w/ Phoenix tools to attempt to pull 2 way back pressure plug, cable head ID too big unable to get head lower then 50' down tbg. RU Phoenix Services to pull plug, unable to pull plug. Wireline changed to smaller head to attempt to pull 2 way back pressure plug w/ wireline & Phoenix tools. Pulling only 1000#, cable breaking point is @ 3000#, and Phoenix Grappler has 600# sheer off pin on tool. Cable on wireline breaks @ cable head, lost cable head, collar locator, Sinker bar, Jar, Phoenix grapppler. All these tools on top of 2 way back pressure valve. RD Phoenix Services, release crew, RD Wireline, set up for free point, chemical cut tbg for tomorrow. Secure well, SDFN, no accidents reported.

07-16-2009

SICP 380 PSI, bleed down to flow back tank. Bleed down tbg, tbg had too much pressure giving the indication that plug might not be there anymore. Wireline Specialties called and came out to tag top of 2 way back pressure valve. TIH w/ wireline and tagged plug @ 150' down, plug still there. TOO H w/ Wireline, pull 5000# and turn tbg to the left for manual back off w/ Knight tool hand. Came apart @ top collar of 1-1/2" tbg, clean off connections and screw back on to tbg. Pull 15,000# on tbg and turn tbg to the left for manual back off w/ Knight tool hand. TOO H w/ 1-1/2" tbg, came apart @ 697.15', LD 19- jts, 2 - pup jts. Wireline tools and Phoenix Services tool found 4' down on 5th jt. TIH w/ 2-7/8" N80 Wk String, and overshot tool, overshot tbg, TIH w/ Wireline Free Point tbg, tbg free @ 6080', below packer tbg not free @ 6180'. TOO H w/ wireline, TIH w/ Chem cutting tool, cut tbg @ 6084', 5' above packer, good cut. TOO H w/ Wireline and Release, TOO H w/ tbg, assure tbg is cut and free. TOO H w/ 19 jts 2-7/8" N-80 work string and stand back in derrick, secure well and location, SDFN, no accidents reported.

07-17-2009

Check and start equipment, SICP 400 PSI. Bleed down to flow back tank. TOO H w/ 1-1/2" 2.9# 10RD EU Tbg. Lay down 5465', 67 Jts. TIH w/ Over Shot tool, Bumper Sub, Jar Tool, 6 - 3-1/2" Drill Collars, Cross over to 2-7/8" N-80, 9 Stands 2-7/8" N80 WK String, 161 - 2-7/8" N80 WK String Singles from Trailer, and 1 - 6' X 2-7/8" 6.5# J-55 8RD EUE Pup Jt. Break Circ. w/ air-mist @ 12 bph, 2 gal foamer, 1/2 gal corrosion Inhibitor per 20 bbls 2% KCL. CO till returns came back clean. Latch on to 1-1/2" Tbg with overshot. Jar on Tbg, Tbg came free from packer. TOO H w/ 2-7/8" N-80 work string stand back 89 stands in derrick. Break apart and lay down all fishing tools. Secure well and location, SDFN, no accidents reported.

07-18-2009

Check and start equipment, SICP 380 PSI, bleed down to flow back tank. TOO H LD 1-1/2" Tbg Long String, TIH w/ Packer Plucking Assembly. Spear w/ 2.688" Grappler, 2 - extensions, 4-3/4" Shoe, Trap Bushing, canfield Bushing, X -Over, Jar, 6 - D.C., X -Over & 89 stands 2-7/8" N-80 Work String, 10' Pup Jt, 1 - Jt 2-7/8" N-80. Swivel up & Break Circ. w/ air-mist @ 12 bph, 2 gal foamer, 1/2 gal corrosion inhibitor per 20 bbls 2% KCL @ 6067'. -- Latched onto Packer @ 6091', Pulled into Packer w/ 15,000# over string weight, assure good catch. Mill out Baker Model "D" Packer, Pull Packer Free. TOO H w/ 1 - single Jt., 10' Pup Jt, 89 - Stands, Stand back in Derrick. Lay Down Tools & Packer. Secure well and location, SDFW, no accidents reported.

07-20-2009

Check and start equipment, SICP 300 PSI. Bleed down to flow back tank. TIH w/ 3-1/2" DC's, LD on trailer. TIH w/ 1/2 Mule Shoe, Float Sub, and 246 - 2-7/8" N80 WK String. PU 2.5 P.S., Tagged fill @ 8080', 6' of fill, Circ well w/ air-mist 1 gal foamer, 1/2 gal corrosion inhibitor per 20 bbls 2% KCL @ 12 bph mist. C/O well to TD @ 8086 run sweeps as needed, returns black water, and sand. TOOH w/ 2-7/8" N80 WK string, RD swivel, LD 80 - jts on tbq trailer. Secure well & Location, SDFN, no accidents reported.

07-21-2009

Check and start equipment, SICP 300 PSI. Bleed down to flow back tank, TOOH w/ 2-7/8" N-80 work string, LD166 - jts on tbq trailer. RD 2-7/8" Tbg Equipment, RU 2-3/8" tbq equipment. TIH w/ Mud Anchor, F-Nipple, 251 - Jts 2-3/8" 4.7 lb/ft, J-55 8RD EUE Production Tbg and Land Tbg Hanger. Landed well as Follows Bottom to Top: 1 - 26' Mud Anchor, 1 - 1.78 F-Nipple, 251 - 2-3/8" 4.7#, J-55 8RD EUE Production Tbg, EOT @ 8030', F-Nipple @ 8004'. RD Tbg Equipment, and Rig Floor, ND BOPE and NU WH. Antelope tested WH to 2500 PSI, Test Good. Pump out Aluminum Plug, Plug went at 1000 PSI. Secure well & location, SDFN, no accidents reported.

# ROSA UNIT #85 BLANCO MV/BASIN DK

## Location:

800' FNL and 990' FEL  
SW/ NE/NE Sec 20, T31N R05W  
Rio Arriba, New Mexico

Elevation: 6441' GR  
API #: 30-039-22778  
KB = 12'

Spud date: 07/02/81

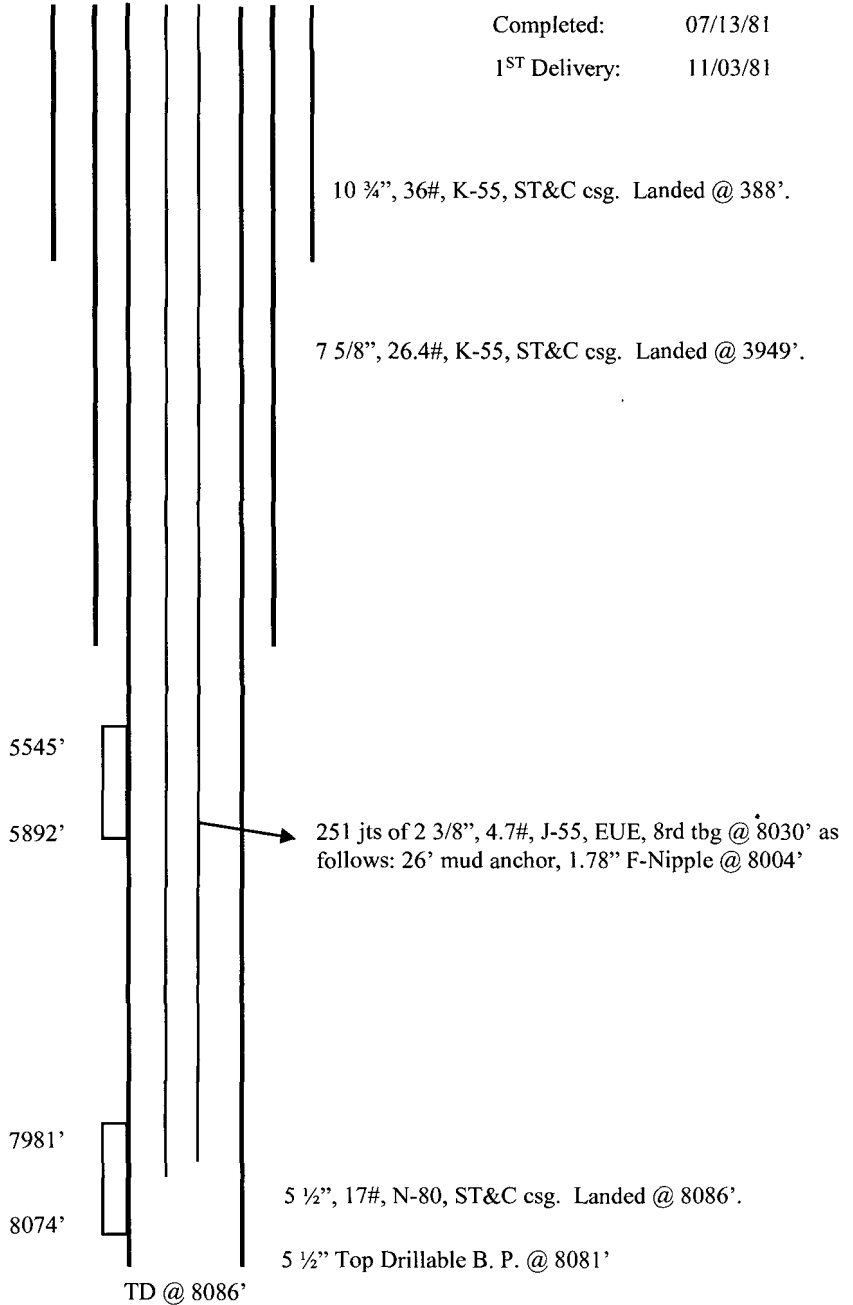
Completed: 07/13/81

1<sup>ST</sup> Delivery: 11/03/81

Top                      Depth

Point Lookout      5545'

Dakota              7981'



Hole Size	Casing	Cement	Volume	Top of CMT
12-1/4"	10-3/4", 36#	230 sx		surface
9-7/8"	7-5/8", 26.4#	160 sx		2641
6-1/4"	5-1/2", 17#	190 sx		3300