

District I
1625 N French Dr., Hobbs, NM 88240

District II
1301 W Grand Avenue, Artesia, NM 88210

District III
1000 Rio Brazos Rd., Aztec, NM 87410

District IV
1220 S St Francis Dr., Santa Fe, NM 87505

State of New Mexico
Energy, Minerals & Natural Resources Department

OIL CONSERVATION DIVISION
1220 South St. Francis Dr.
Santa Fe, NM 87505

Form C-102
Revised October 12, 2005
Instructions on back
Submit to Appropriate District Office
State Lease - 4 Copies
Fee Lease - 3 Copies

☒ AMENDED REPORT

DAKOTA SPACINE

WELL LOCATION AND ACREAGE DEDICATION PLAT

| | | |
|-----------------------------|---|---|
| *API Number 30-039-25583 | *Pool Code 72319 / 71599 | *Pool Name BLANCO MESAVERDE / BASIN DAKOTA |
| *Property Code 17033 | *Property Name ROSA UNIT | *Well Number 159 |
| *GRID No. 120782 | *Operator Name WILLIAMS PRODUCTION COMPANY | *Elevation 6327' |

¹⁰ Surface Location

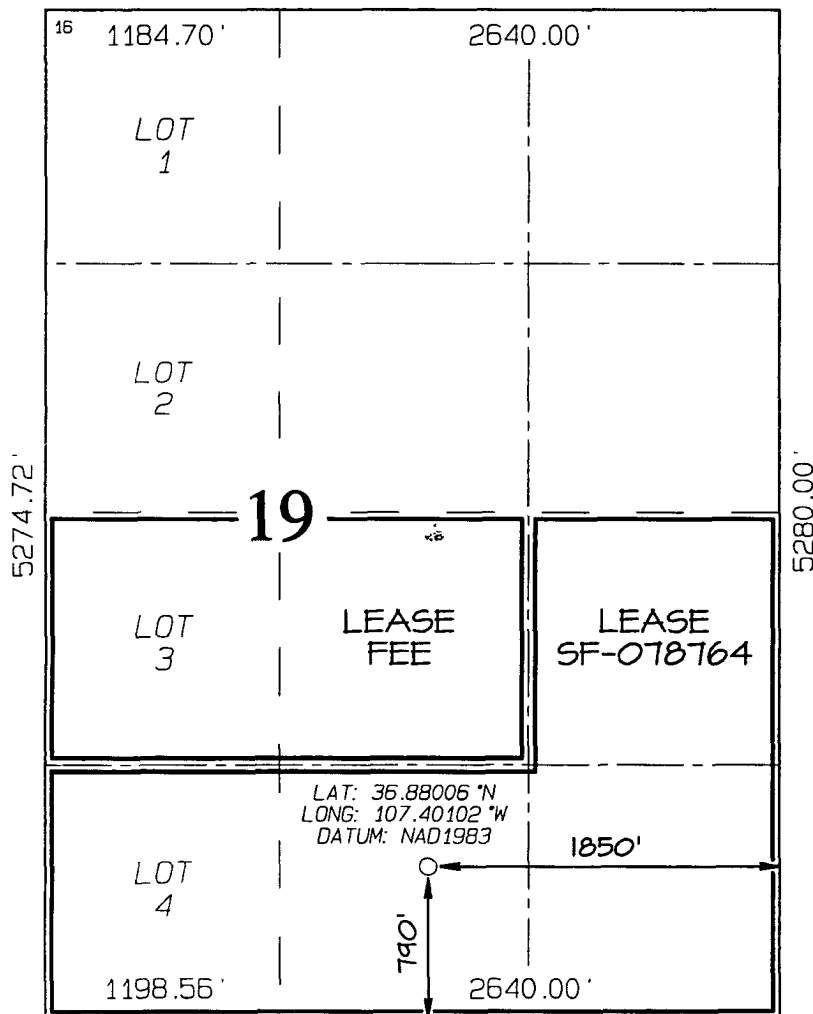
| UL or lot no | Section | Township | Range | Lot Idn | Feet from the | North/South line | Feet from the | East/West line | County |
|--------------|---------|----------|-------|---------|---------------|------------------|---------------|----------------|------------|
| 0 | 19 | 31N | 5W | | 790 | SOUTH | 1850 | EAST | RIO ARriba |

¹¹ Bottom Hole Location If Different From Surface

| UL or lot no | Section | Township | Range | Lot Idn | Feet from the | North/South line | Feet from the | East/West line | County |
|---|---------|----------|-------|---------|-------------------------------|----------------------------------|---|----------------|--------|
| | | | | | | | | | |
| ¹² Dedicated Acres 232.43 Acres - (S/2) | | | | | ¹³ Joint or Infill | ¹⁴ Consolidation Code | ¹⁵ Order No RCVD JUL 23 '09 | | |

OIL CONS. DIV.

NO ALLOWABLE WILL BE ASSIGNED TO THIS COMPLETION UNTIL ALL INTERESTS HAVE BEEN CONSOLIDATED
OR A NON-STANDARD UNIT HAS BEEN APPROVED BY THE DIVISION **DIST. 3**



¹⁷ OPERATOR CERTIFICATION

I hereby certify that the information contained herein is true and complete to the best of my knowledge and belief, and that this organization either owns a working interest or unleased mineral interest in the land including the proposed bottom-hole location or has a right to drill this well at this location pursuant to a contract with an owner of such a mineral or working interest, or to a voluntary pooling agreement or a compulsory pooling order heretofore entered by the division

Larry Higgins 7-23-09
Signature Date

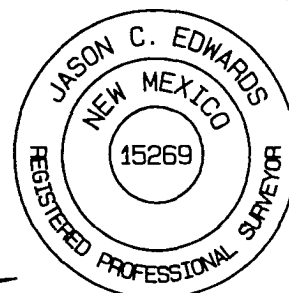
Larry Higgins
Printed Name

¹⁸ SURVEYOR CERTIFICATION

I hereby certify that the well location shown on this plat was plotted from field notes of actual surveys made by me or under my supervision, and that the same is true and correct to the best of my belief

Date Revised: JULY 23, 2009
Survey Date: NOVEMBER 21, 1995

Signature and Seal of Professional Surveyor



JASON C. EDWARDS
Certificate Number 15269