

District III
1000 Rio Brazos Rd., Aztec, NM 87410
Phone: (505) 334-6178 Fax (505) 334-6170

State of New Mexico
Energy, Minerals and Natural Resources

Form C-101
Permit 99826

Oil Conservation Division
1220 S. St Francis Dr.
Santa Fe, NM 87505

RCVD JUL 30 '09
OIL CONS. DIV.
DIST. 3

APPLICATION FOR PERMIT TO DRILL, RE-ENTER, DEEPEN, PLUGBACK, OR ADD A ZONE

1. Operator Name and Address BURLINGTON RESOURCES OIL & GAS COMPANY LP 3401 E. 30TH STREET FARMINGTON, NM 87402		2. OGRID Number 14538
		3. API Number 30-045-29936
4. Property Code 7622	5. Property Name VASALY COM	6. Well No. 002

7. Surface Location

UL - Lot B	Section 22	Township 30N	Range 11W	Lot Idn B	Feet From 1200	N/S Line N	Feet From 2390	E/W Line E	County SAN JUAN
---------------	---------------	-----------------	--------------	--------------	-------------------	---------------	-------------------	---------------	--------------------

8. Pool Information

swd:Leadville/Ouray	97764
---------------------	-------

Additional Well Information

9. Work Type D	10. Well Type LS	11. Cable/Rotary	12. Lease Type Private	13. Ground Level Elevation 5856
14. Multiple N	15. Proposed Depth 13148	16. Formation Leadville Formation	17. Contractor	18. Spud Date
Depth to Ground water		Distance from nearest fresh water well		Distance to nearest surface water
Pit Liner: Synthetic <input type="checkbox"/> <input type="checkbox"/> Closed Loop System <input type="checkbox"/>		mils thick Clay <input type="checkbox"/> Pit Volume: bbls Drilling Method: Fresh Water <input checked="" type="checkbox"/> Brine <input type="checkbox"/> Diesel/Oil-based <input type="checkbox"/> Gas/Air <input type="checkbox"/>		

19. Proposed Casing and Cement Program

Type	Hole Size	Casing Type	Casing Weight/ft	Setting Depth	Sacks of Cement	Estimated TOC
Surf	17.5	13.333	60	391	700	0
Intl	13.5	9.625	47	6999	2910	0
Prod	8.75	7	26	6507	825	0
Prod	9.625	7	26	13085	1800	8000

Casing/Cement Program: Additional Comments

Plans are to deepen the existing SWD (permit SWD1082) into the Ouray formation and then inject from both the current injections zones of Morrison/Bluff/Entrada and also into the new zone of Ouray. Our SWD permit will be amended to include the Ouray after the well is deepened and injectivity is established in the Ouray.

Proposed Blowout Prevention Program

Type	Working Pressure	Test Pressure	Manufacturer
DoubleRam	3000	3000	Schafer

I hereby certify that the information given above is true and complete to the best of my knowledge and belief.
I further certify that the drilling pit will be constructed according to NMOCD guidelines ☐ a general permit ☐ or an (attached) alternative OCD-approved plan ☐

Printed Name: *Fatey Clughr*
Title: *Sr. Regulatory Specialist*
Email Address: *clugspl@comcast.net*
Date: *7/29/09* Phone: *505-326-9518*

OIL CONSERVATION DIVISION

Approved By: *[Signature]*

Title: *DEPUTY OIL & GAS INSPECTOR DIST. 3*

Approved Date: *8/7/2009* Expiration Date: *8/7/11*

Conditions: *Get SWD order for Ouray Pen First. Follow all procedures from Engineering Bureau, NMOLD, Santa Fe.*

AUG 07 2009

NOTIFY AZTEC OCD 24 HRS.
PRIOR TO CASING & CEMENT

District I

1625 N French Dr , Hobbs, NM 88240

District II

1301 W. Grand Ave., Artesia, NM 88210

District III

1000 Rio Brazos Rd., Aztec, NM 87410

District IV

1220 S St Francis Dr., Santa Fe, NM 87505

State of New Mexico
Energy, Minerals and Natural Resources
Oil Conservation Division
1220 S. St Francis Dr.
Santa Fe, NM 87505

Form C-102
 Permit 99826

WELL LOCATION AND ACREAGE DEDICATION PLAT

1. API Number 30-045-29936	2. Pool Code 97764	3. Pool Name swd:Leadville/Ouray
4. Property Code 7622	5. Property Name VASALY COM	6. Well No. 002
7. OGRID No. 14538	8. Operator Name BURLINGTON RESOURCES OIL & GAS COMPANY LP	9. Elevation 5856

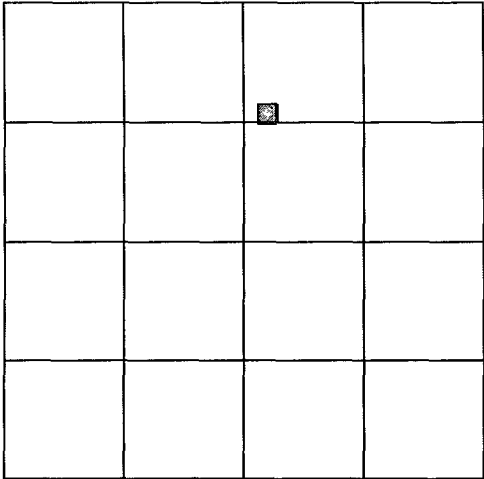
10. Surface Location

UL - Lot B	Section 22	Township 30N	Range 11W	Lot Idn	Feet From 1200	N/S Line N	Feet From 2390	E/W Line E	County SAN JUAN
---------------	---------------	-----------------	--------------	---------	-------------------	---------------	-------------------	---------------	--------------------

11. Bottom Hole Location If Different From Surface

UL - Lot B	Section	Township	Range	Lot Idn	Feet From	N/S Line	Feet From	E/W Line	County
12. Dedicated Acres 0.00		13. Joint or Infill		14. Consolidation Code		15. Order No.			

NO ALLOWABLE WILL BE ASSIGNED TO THIS COMPLETION UNTIL ALL INTERESTS HAVE BEEN CONSOLIDATED OR A NON-STANDARD UNIT HAS BEEN APPROVED BY THE DIVISION

	<p style="text-align: center;">OPERATOR CERTIFICATION</p> <p><i>I hereby certify that the information contained herein is true and complete to the best of my knowledge and belief, and that this organization either owns a working interest or unleased mineral interest in the land including the proposed bottom hole location(s) or has a right to drill this well at this location pursuant to a contract with an owner of such a mineral or working interest, or to a voluntary pooling agreement or a compulsory pooling order heretofore entered by the division.</i></p> <p>E-Signed By: <i>Vatsy Chugh</i> Title: Sr. Regulatory Specialist Date: 7/29/09</p>
	<p style="text-align: center;">SURVEYOR CERTIFICATION</p> <p><i>I hereby certify that the well location shown on this plat was plotted from field notes of actual surveys made by me or under my supervision, and that the same is true and correct to the best of my belief.</i></p> <p>Surveyed By: Neal C. Edward Date of Survey: 4/21/1999 Certificate Number: 6857</p>

Vasaly Com #2 SWD

1200 FNL , 2390 FEL
Unit B, Section 22, T30N, R11W.
San Juan County, NM

LAT: 36 Deg. 48.1 Min.

LONG: 107 Deg. 58.6 Min.

GL = 5,856'

KB= 5,882'

Current 7-29-2009 Wellbore

Surface Casing:

13-3/8" 68.0#
Set @ 391'
TOC @ Surface

Intermediate Casing:

9-5/8" 47.0# L-80
Set @ 6,999'
TOC @ Surface

Casing Tie Back

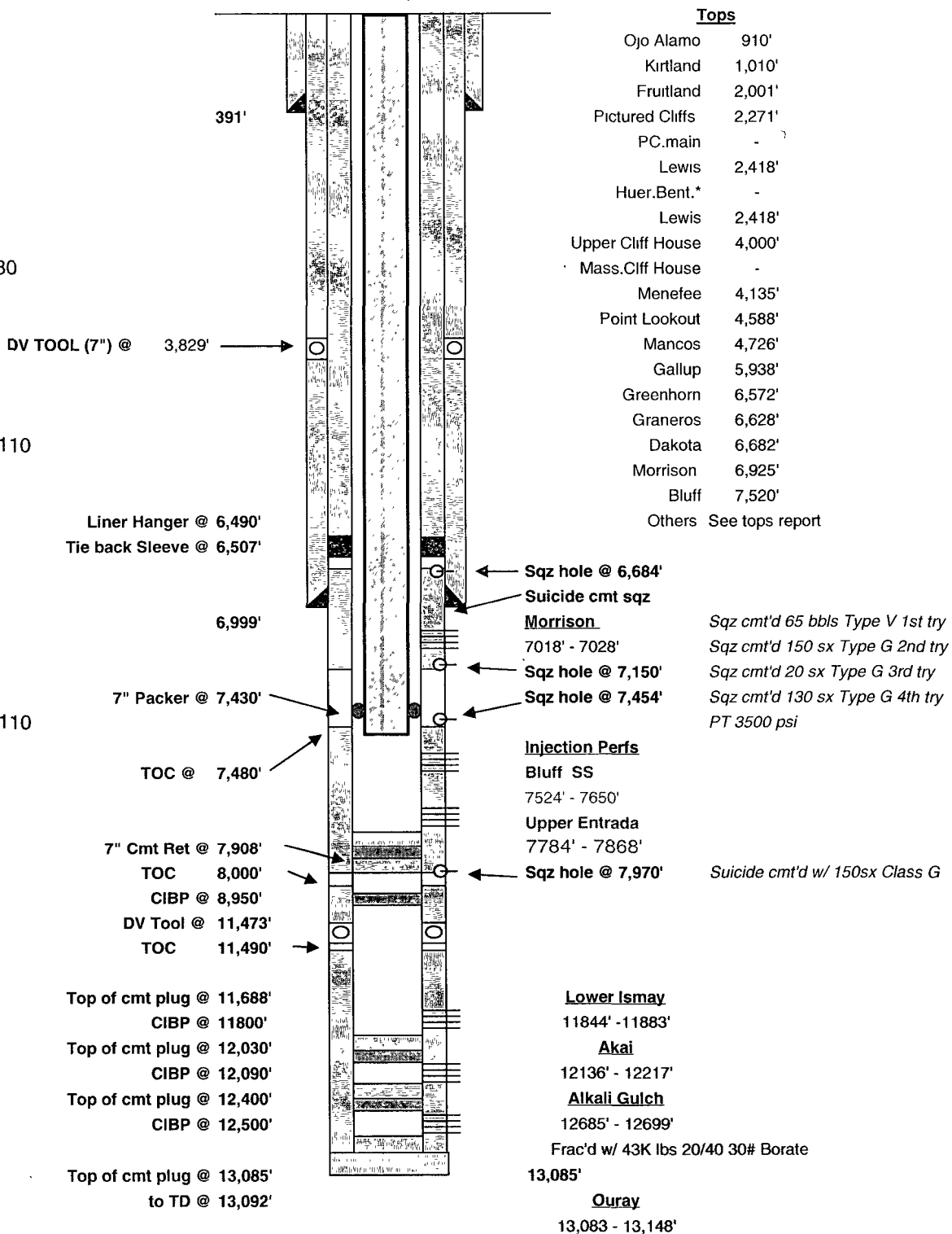
7" 26.0# P-110
Set At: 6,508'
TOC At: Surface

Injection String

4-1/2" J-55 IPC 10.5#
Set @ 7,430'

Production Casing/Liner:

7" 26.0# P-110
Liner Top: 6,490'
TOC At: 8,000'
Set At: 13,085'



Loggers TD = 12,939'
Original PBD= 13,037'
TD= 13,092'

Vasaly Com #2 SWD

**Unit B, Section 22, Township 30N, Range 11W
San Juan Co., NM
Ouray Recompletion test Sundry**

7/21/09

1. MIRU rig and related equipment. Review and implement H2S contingency plan.
2. RU wireline company and set safety plug in 4-1/2" IPC injection string.
3. ND WH & NU BOP. TOH and lay down 7,430' 4-1/2" J-55 IPC injection string.
4. TIH w/work string and remove production packer @ 7,430'.
5. TIH w/6-1/8" bit and work string.
6. DO Cement retainer @ 7,908' and CIBP @ 8,950'. Pressure test casing and if necessary set cement retainer and squeeze. DO retainer and squeeze cement. Pressure test casing.
7. Recover or DO fish (junk basket) @ 9,200'. DO cement from 11,688' -11,800' & CIBP @ 11,800'.
8. Set cement retainer @ 11,800' and squeeze Lower Ismay perms from 11,844' -11,883'.
9. DO retainer @ 11,800 and cement from squeeze. Pressure test casing.
10. DO cement plug from 12,030' to 12,090' and CIBP @ 12,090'.
11. Set cement retainer @ 12,090' and squeeze Akai perms from 12,136'-12,217'.
12. DO retainer at 12,090' and cement from squeeze. Pressure test casing.
13. DO cement from 12,400'-12,500' and CIBP @ 12,500'.
14. Set cement retainer @12,600' and squeeze Alkali Gulch perms from 12, 685' to 12,699'.
15. DO retainer and squeeze cement. Pressure test casing.
16. CO to 13,083' (PBTD) and DO shoe and cement to bottom of Ouray formation @ 13,148'. Under ream Ouray to 13,148'.
17. Test Ouray formation including a step rate test. Run injection profile test on entire wellbore.
18. Acid stimulate the Ouray formation open hole from 13,083'-13,148'.
19. Set production packer and 4-1/2" injection string @ 7,430'.
20. ND BOP and NU WH.
21. RDMO. Return well to injection.