

UNITED STATES
DEPARTMENT OF THE INTERIOR
BUREAU OF LAND MANAGEMENTFORM APPROVED
OMB NO 1004-0137
Expires July 31, 2010

SUNDRY NOTICES AND REPORTS ON WELLS

Do not use this form for proposals to drill or to re-enter an
abandoned well. Use Form 3160-3 (APD) for such proposals.

RECEIVED

SUBMIT IN TRIPLICATE - Other instructions on page 2

AUG 17 2009

1. Type of Well
☐ Oil Well ☒ Gas Well ☐ OtherBureau of Land Management
Farmington Field Office2. Name of Operator
Energen Resources Corporation3a. Address
2010 Afton Place, Farmington, NM 874013b. Phone No. (include area code)
(505) 325-68004. Location of Well (Footage, Sec., T., R., M., or Survey Description)
800' FNL, 540' FEL Sec.10, T32N, R05W
(H) SE/NE

5. Lease Serial No.

NMNM 76832

6. If Indian, Allottee or Tribe Name

7. If Unit or CA/Agreement, Name and/or No
Carracas Unit8. Well Name and No.
Carracas 10 A 89. API Well No.
30-039-2642010. Field and Pool, or Exploratory Area
Basin Fruitland Coal11. County or Parish, State
Rio Arriba NM

12. CHECK APPROPRIATE BOX(ES) TO INDICATE NATURE OF NOTICE, REPORT, OR OTHER DATA

TYPE OF SUBMISSION

- ☐ Notice of Intent
☒ Subsequent Report
☐ Final Abandonment Notice

TYPE OF ACTION

- ☐ Acidize ☐ Deepen ☐ Production (Start/Resume) ☐ Water Shut-Off
☐ Alter Casing ☐ Fracture Treat ☐ Reclamation ☐ Well Integrity
☐ Casing Repair ☐ New Construction ☐ Recomplete ☒ Other Pull tbq/pkr
☐ Change Plans ☐ Plug and Abandon ☐ Temporarily Abandon Reinstall tbq/pkr
☐ Convert to Injection ☐ Plug Back ☐ Water Disposal POW & BHP reading

13. Describe Proposed or Completed Operation (clearly state all pertinent details, including estimated starting date of any proposed work and approximate duration thereof. If the proposal is to deepen directionally or recompleat horizontally, give subsurface locations and measured and true vertical depths of all pertinent markers and zones. Attach the Bond under which the work will be performed or provide the Bond No. on file with BLM/BIA. Required subsequent reports shall be filed within 30 days following completion of the involved operations. If the operation results in a multiple completion or recompleat in a new interval, a Form 3160-4 shall be filed once testing has been completed. Final Abandonment Notices shall be filed only after all requirements, including reclamation, have been completed, and the operator has determined that the final site is ready for final inspection.)

OBSERVATION

Energen Resources converted the Carracas 10AA #8 into a pressure conversion well per the approved NOI dated 06/26/08. On 08/06/2009 Energen submitted and NOI outling the following:

-In attempting to pull pressure guages via slickline they became stuck - thus tubing and packer have to be pulled from the well - tubing and packer to be re-installed the same as before - casing tubing annulus will be pressure tested - NMOCD/BLM-FFO will be notified via telephone 24 hrs in advance of test- pressure test will be chart recorded for 30 minutes. Verbal(s) given by BLM-FFO- Mr. Steve Mason and Mr. Kelly Roberts of NMOCD.- upon downloading the guages - annual pressure report will be submitted as a subsequent report to BLM-FFO and NMOCD Aztec.

The well was worked on from (8/7 to 8/12/2009) - the tubing was pulled and the guages downloaded- the packer and tubing were reinstalled - with the packer set at 4,109' (perfs are from 4,151' to 4,181') The NMOCD witnessed the MIT on the casing tubing annulus on 8/12/2009 - see attached MIT test report and Energen Pertinent data sheet for specific well information.

RCVD AUG 24 '09

The Pressure Guages did provide BHP=1,060 psig and BHT=127 F -see chart attached.

OIL CONS. DIV.
DIST. 3

14. I hereby certify that the foregoing is true and correct
Name (Printed/Typed)

Patricio W. Sanchez

Title District Engineer

Signature

Date 8/15/2009

THIS SPACE FOR FEDERAL OR STATE OFFICE USE

Approved by

Title

Conditions of approval, if any, are attached Approval of this notice does not warrant or certify that the applicant holds legal or equitable title to those rights in the subject lease which would entitle the applicant to conduct operations thereon

Office

FARMINGTON FIELD OFFICE

Title 18 U.S.C. Section 1001, and Title 43 U.S.C. Section 1212, makes it a crime for any person knowingly and willfully to make to any department or agency of the United States any false, fictitious or fraudulent statements or representations as to any matter within its jurisdiction.

NMOCD



NEW MEXICO ENERGY, MINERALS and
NATURAL RESOURCES DEPARTMENT

MECHANICAL INTEGRITY TEST REPORT

(TA OR UIC)

Date of Test 8-12-09 Operator Emery Inc. API # 30-0 39-26420

Property Name Curcas LA 10A Well # 8 Location: Unit Sec 10 Twn 2 Rge 5

Land Type:

State
Federal
Private
Indian

Well Type:

Water Injection
Salt Water Disposal
Gas Injection
Producing Oil/Gas
Pressure observation

Temporarily Abandoned Well (Y/N): TA Expires: 8-12-2014

Casing Pres. 0
Bradenhead Pres. 0
Tubing Pres. 850
Int. Casing Pres. N/A

Tbg. SI Pres.
Tbg. Inj. Pres.

Max. Inj. Pres.

RCVD AUG 12 '09

OIL CONS. DIV.

DIST. 3

Pressured annulus up to 1620 psi. for 30 mins. Test passed/failed

REMARKS:

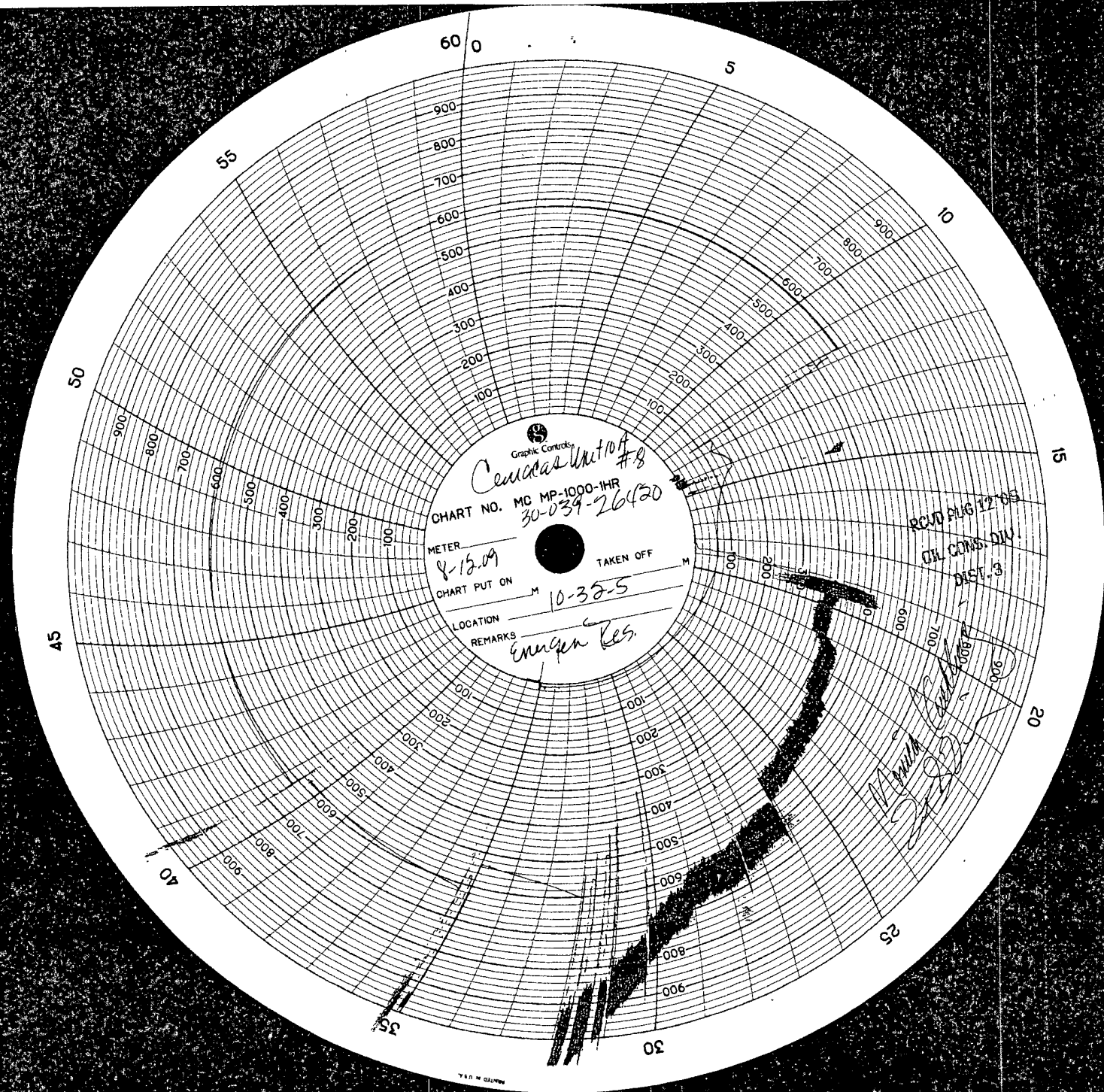
Packer set at 4113
and perf at 4151 to 4181

By [Signature]
(Operator Representative)

Witness [Signature]
(NMOCD)

Consultant
(Position)

Revised 02-11-02



ENERGEN RESOURCES

Pertinent Data Sheet

Date: 8/15/2009 **Well Name:** Carracas 10A #8 **API#:** 30-039-26420 **DP#:** 3126420A
Unit: H **Sec:** 10 **Twp:** 32N **Rge:** 05W **Footage:** 800 FNL, 540 FEL
County: Rio Arriba **State:** NM **Spud:** 07/18/2000 **Completed:** 8/27/2000
Field: Fruitland Coal **Elev:** 7,590' **TD:** 4,283' **PBTD:** PBTD@ **KB:** 16'
GL 4,224'
Perfs: 4,151-81' w/ 120-0.42" holes @ 4 SPF PERFS 4157'-4181'

Converted to POW August 2008 - Re-MIT in 2009/due to stuck guages.

Frac: 500 gal 10% formic acid, 103,839 gal 25# Delta 140 fluid w/ 245,000# 20/40 sd

****TIH W/ NOTCH COLLAR&PIN, 2-3/8"X6' TUBING SUB, XO, BAKER 7" MODEL A-3 LOCK SET PACKER, XO, 1.78" ID F-NIPPLE AND 132 JTS 2-3/8" TUBING. LAND HANGER AND SET PACKER IN 10K TENSION.**

Hole Size	Casing Size	Weight & Grade	Depth Set	Cement	TOC
12-1/4"	8-5/8"	24# J-55	423'	300 sks	circ
7-7/8"	5-1/2"	17# K-55	4280'	1300 sks	circ

Tubing Size	# Joints	Weight & Grade	Depth Set	Seat Nipple	Packer
**2-3/8"	132	4.7# J-55 EUE	4,116' MD	F-NIPPLE AT 4,108' MD	4,109' MD

Rod & Pump Record:

Rod Size	# Rods	Length	Grade
----------	--------	--------	-------

Log Record: GR-CCL-CNL

Formation Tops:

Ojo Alamo	3,448'	Menefee
Kirtland	3,580'	Point Lookout
Fruitland	3,887'	Mancos
Pictured Cliffs		Gallup
Lewis		Graneros
Cliffhouse		Dakota

Work History: (8/7 to 8/12/2009) Pull stuck guages - RE-MIT POW. CHECKED ANCHORS. MIRU MESA RIG#206. SICP 70 PSIG. SITP 900 PSIG. BLOW DOWN WELL. NIPPLE DOWN WELL HEAD. NIPPLE UP BOP. RELEASED PACKER. TOH W/ 131 JTS 2-3/8" TUBING, F- NIPPLE, 1 JT 2-3/8" TUBING, BAKER LOK SET PACKER W/ GAUGES, 2-3/8"X6' PERF SUB AND BULL PLUG. FOUND 7/16" PIN ON TOP OF GAUGES. TIH W/ NOTCH COLLAR & PIN, 1 JT 2-3/8" TUBING, SEAT NIPPLE AND 135 JTS 2-3/8" TUBING. TAGGED AT 4,223' (1' OF FILL). LD 1 JT. SWI. SHUT DOWN FOR NOW. SICP 900 PSIG. SITP 10 PSIG. RU SWAB TOOLS. SWAB. BFL 1,600', 3 RUNS, 1.5 HRS., 12 BPW, FFL 4,215'. FTP 0 TO 50 PSIG. SICP 900 - 500 PSIG. PUMPED DOWN CASING 5 - 5 BBL SOAP SWEEPS. RECOVERED 65 BPW IN 5 HRS. CLEAN W/ NO SOLIDS. BLEED OFF CASING. DROP STANDING VALVE. PRESSURE TEST TUBING TO 1,000 PSIG W/ 16 BPW FOR 15 MIN. HELD OK. RELEASED PRESSURE. RU LUBRICATOR. RIH W/ FISHING

TOOL. CAUGHT STANDING VALVE. POOH. SWI. SHUT DOWN FOR NOW. 16 BPWTR.SICP 750 PSIG. SITP 0 PSIG. BLOW DOWN WELL. RECOVERED 20 BPW. CLEAN FLUID AND NO SOLIDS. LD 3 JTS 2-3/8" TUBING. TOH W/ 131 JTS 2-3/8" TUBING, SEAT NIPPLE, 1 JT 2-3/8" TUBING AND NC. PU AND TIH W/ NOTCH COLLAR&PIN, 2-3/8"X6' TUBING SUB, XO, BAKER 7" MODEL A-3 LOCK SET PACKER, XO, 1.78" ID F-NIPPLE AND 132 JTS 2-3/8" TUBING. LAND HANGER AND SET PACKER IN 10K TENSION. PACKER SET AT 4,109' MD. F-NIPPLE AT 4,108' MD. EOT AT 4,116' MD. FC PERS 4,151' TO 4,181'. PBTD 4,223' W/ 1' OF FILL. NIPPLE DOWN BOP. NIPPLE UP WELL HEAD. LOAD AND PRESSURE TEST CASING TO 550 PSIG W/ 40 BBLS 2%KCL AND 5 GALS INHIB II. HELD FOR 30 MIN. RELEASED PRESSURE. SWI. SHUT DOWN FOR NOW. RDMO MESA RIG#206. SICP 800 PSIG. SITP 850 PSIG. SIBP 0 PSIG. MONICA KUEHLING ON LOCATION FOR N.M.O.C.D. MIRU WELL CHECK TRUCK. BLOW DOWN CASING. 800 PSIG TO 0 PSIG IN 15 MIN. PRESSURE TEST CASING TO 620 PSIG FOR 30 MIN. HELD OK. RELEASED PRESSURE 580 TO 0 PSIG IN 10 MIN. PRESSURE CASING UP TO 150 PSIG. RDMO TEST TRUCK. SWI. SHUT DOWN FOR NOW. READY FOR GAUGES.

(8/19 to 8/23/2008) Convert to POW. SICP=800#, SITP=200# HOLD TAILGATE SFTY MTG .MIRUPU, SPOT AUX EQUIPMENT, BLOW DWN PRESSURES TO FB TANK, SEAT ROD PUMP, LOAD AND TEST TBG W/ 3 BBLS PROD H2O TO 1000#, TEST HELD GOOD, BLEED PSI OFF, UNSEAT PUMP, LAY DOWN ROD STRING AS FOLLOWS: 1 1/4 X 26' POLISH ROD W/ LINER, 4', 6' X 3/4" PONY RODS, 164 X 3/4" D RODS, 2 - 1 1/4" SINKER BARS, 2 X 1 1/2 X 16' RWAC INSERT PUMP.NDWH, NU BOP, RU WELLCHECK TESTER, PRESSURE TEST BOPE, 300 LOW, 3000 HIGH FOR 30 MINUTES, ALL TESTED GOOD, RD TESTER, UNSEAT 7 1/16 TBG HGR, PU 1 JT TBG , TAG BOTTOM W/ 31.35', LD SAME JT, TOO H TALLYING 2 3/8" 4.7# J-55 EUE 8RD PROD TBG AS FOLLOWS: 1 JT TBG X 31.55', 1 SUB X 10.00', 133 JTS TBG X 4121.21', 1.78" ID SN X 1.10', 2 3/8" PERF SUB X 8.10', 2 TBG SUBS X 10.00' EA., NOTCHED PIN COLLAR X .40'. SECURE WELL, SION. SICP=650#, BLEED CSG PSI DWN TO FB TANK, TIH W/ 5 1/2" CSG SCRAPER/BIT TO 4230', TOO H, LD BHA, PU BAKER RETRIEV-MATIC PKR TO 4108', SET, LOAD ANN W/ 40 BBLS PROD H2O, PRESS TEST CSG TO 1000#, TEST HELD GOOD, BLEED PSI TO 500#, WAIT ON ACID CREW TO ACIDIZE PERFS, SECURE WELL, SION. HOLD TAILGATE SFTY MTG .SITP=600#, SICP=0#RETRIEVABLE PKR SETTING AT 4108', PRESSURE ANNULUS TO 500#, RU H & M ACID TRK, PUMP 750 GALS 7 1/2% HCL, DBL INH. @ 2 BPM, 0 PSI, FLUSH W/ 40 BBLS SURFACTANT H2O, SECURE WELL, SION. RD ACID CREW. HOLD TAILGATE SFTY MTG. SITP=40, SICP=0#RU SWAB, MAKE 5 RUNS , PERFS FLOWING TO FB TANK, BFL = 2500', FLOWED 60 BBLS H2O AND ACID BACK, RD SWAB, UNSEAT RET. PKR, TOO H, TIH W/ 5 1/2" BAKER LOCKSET PROD PKR TO 4113', ND BOP, ATTEMPT TO SET FOR 1 HR W/ NO SUCCESS, NU BOP, WILL PULL PKR 8/23/08. SECURE WELL, SION. HOLD TAILGATE SFTY MTG.SICP=50#, SITP=40#BLEED PSI DWN, TOO H W/ 1ST LOCKSET PKR, PU AND TIH W/ 2ND 5 1/2" BAKER LOCKSET PKR TO 4113' KB, LAND TBG IN DONUT, NDBOP, REMOVE HGR, SET PKR IN 6K SURFACE TENSION, REINSTALL 2" X 7 1/16" TBG HGR, NU WH, 2 3/8" 4.7# J-55 EUE 8RD PROD STRING CONSISTS OF:KB 16.00' 131 JTS 4063.29' 1.78"ID FN .95' 1 JT 29.55' PKR 3.50' PERF SUB 6.10' BULL PLUG .60' EOT @ 4119.99' PKR @ 4113' KB PERFS 4157'-4181'.

RU WELLCHECK TESTER, LOAD ANNULUS W/ 60 BBLS ANHIB II H2O, PERFORM H-5 TEST FOR NMOCD, PRESSURE TEST ANNULUS TO 800# , 30 MINUTES, SITP=20#, SIBHP = 0#, TEST HELD GOOD, PERMISSION BY MR. CHARLIE PERRIN OF NMOCD TO PERFORM TEST W/O STATE REP ON LOCATION, BLEED PSI OFF, SECURE WELL, SHUT IN. NOTIFY PROD DEPT., RDMO .FINAL REPORT , JOB COMPLETED.

COMMENT SUMMARY

Oil Company: ENERGEN RESOURCES
Date of Test: 4/8/09-8/10/09

Well Location: CARRACAS UNIT 10A #8
Serial#: 90657

#	Real Time	Comment	Pres.(PSIG)	Temp.(DEG.F)
1	08/07/2009 11:11:00	OFF BOTTOM	1060.31	127.220

PRESSURE AND TEMPERATURE VS DELTA TIME

Company: ENERGEN RESOURCES

Location: CARRACAS UNIT 10A #8

Date: 4/8/09-8/10/09

Serial# 90657

Max. Pressure: 1357.287 Max. Temperature: 127.884

