

UNITED STATES  
DEPARTMENT OF THE INTERIOR  
BUREAU OF LAND MANAGEMENT

RECEIVED

SEP 23 2009

Sundry Notices and Reports on Wells

1. Type of Well  
GAS

2. Name of Operator  
**ConocoPhillips Company**

3. Address & Phone No. of Operator

PO Box 4289, Farmington, NM 87499 (505) 326-9700

4. Location of Well, Footage, Sec., T, R, M

Surface: Unit F (SENW), 1525' FNL & 1620' FWL, Section 27, T30N, R5W, NMPM

5. Lease Number  
SF - 078738

6. If Indian, All. or  
Tribe Name

7. Unit Agreement Name  
San Juan 30-5 Unit

8. Well Name & Number  
San Juan 30-5 Unit 81N

9. API Well No.

30-039-30765

10. Field and Pool  
Blanco MV/Basin DK

11. County and State  
Rio Arriba, NM

12. CHECK APPROPRIATE BOX TO INDICATE NATURE OF NOTICE, REPORT, OTHER DATA

Type of Submission

Type of Action

☒ Notice of Intent

☐ Abandonment

☐ Change of Plans

☒ Other - Cmt bond log/squeeze

☐ Recompletion

☐ New Construction

☐ Subsequent Report

☐ Plugging

☐ Non-Routine Fracturing

☐ Casing Repair

☐ Water Shut off

☐ Final Abandonment

☐ Altering Casing

☐ Conversion to Injection

RCVD SEP 29 '09

OIL CONS. DIV.

DIST. 3

13. Describe Proposed or Completed Operations

Encountered loss of returns on the 7" cmt on the subject well. Feel that the losses occurred due to water inflows from the Ojo Alamo In the 30-5 area and the well bridging off because of the volume of LCM material used.

09/14/2009 Called Jim Lovato (BLM) and Charlie Perrin (OCD) to request permission to squeeze. They requested A CBL to be run prior to squeeze. Ran CBL and sent to agencies for review. 09/15/2009 Verbal was given by Jim Lovato (BLM) And Charlie Perrin & Steve Hayden to proceed with squeezes @ 2945' & 1600'.

Squeeze will be performed according to attached procedures. Procedures were also sent to agencies via e-mail.

14. I hereby certify that the foregoing is true and correct.

Signed Jamie Goodwin Jamie Goodwin

Title: Regulatory Technician

Date 09/21/2009

(This space for Federal or State Office use)

APPROVED BY [Signature]

Title Petr. Eng.

Date 9/28/09

CONDITION OF APPROVAL, if any:

Title 18 U.S.C. Section 1001, makes it a crime for any person knowingly and willfully to make any department or agency of the United States any false, fictitious or fraudulent statements or representations as to any matter within its jurisdiction.

NMOCOD

## Burlington Resources

Well Name: **San Juan 30-5 Unit #81N**

Type: Vertical

Formation: Mesa Verde / Basin Dakota  
Location: T - 309 N R - 5 W Sec 27  
Footage: 1525' FNL & 1620' FWL  
County: Rio Arriba State: New Mexico  
Rig: H&P 281 API #: 30-039-30765  
Signed APD: 08/06/09 Lease#: SF-078738  
GL: 6,577' BLM Phone #: 599-8907  
KB: 6,593' DAYS: 9  
TD: 8,014'

AFE# WAN.CDR.8241  
Network #: 10244536

## San Juan Business Unit - Drilling Program

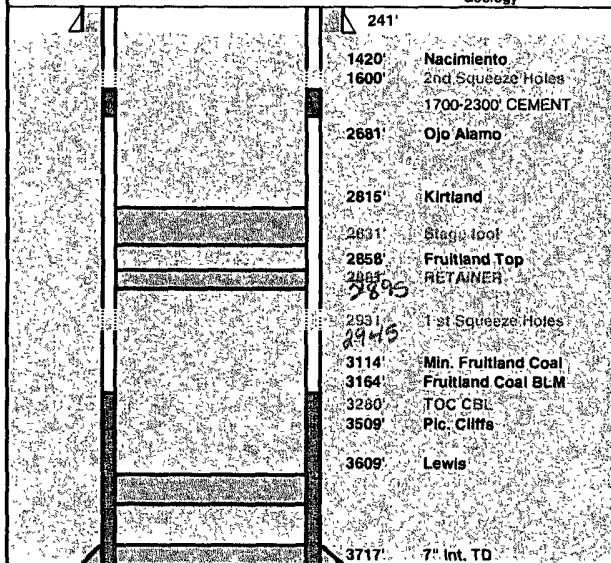
### In case of Major Emergency Call 911

Give the following information to Operator:

Well Name: San Juan 30-5 Unit #81N  
Latitude: 36° 47.204155' N (NAD 1927) 36.786742N County: Rio Arriba  
Longitude: 107° 20.857816' W (NAD 1927) 107.348231W (NAD 1983) State: New Mexico

Form Bloomfield, New Mexico: Go 37.7 miles on Hwy 64 (Mile marker 102.3) Turn Left (North) on Hwy 527, A.K.A. Simms Marina Road. Go 8.0 miles North on Hwy 527. Turn right into Rosa Road. Go 6.4 miles along Rosa Road crossing La Jara Wash. Turn right (Easterly) at BLM / Forest service warning sign. Go 4.7 miles crossing La Fragua Wash, staying on main road East. Turn right (Southeasterly) into Manuel Canyon towards Espinosa Ranch. Go 0.8 miles southeast to the Espinosa Ranch, homestead to the left side of road. Go 0.8 miles Southeast from the Espinosa Ranch house into Manuel Canyon just past the cattle guard. Begin 1975-ft. New access on right (North) side of road.

### Geology



### 3280-FT TO 2300-FT GAP SQUEEZE BEHIND 7" CASING

- 1 - R/U and run in with Schlumberger wireline & CBL.
- 2 - Once confirmed that open Gap is between 3280-ft & 2300-ft through bond log.
- 3 - Pressure test 7" casing to 1500 psi for 30 min.
- 4 - RIH with 4 x 0.6" gun shots & perforate 7" 20 ppf J-55 ST&C casing at 2945-ft. 25-ft below casing collar. POOH. Verify injection rate to 1500 psi.
- 5 - RIH with 4" DP stinger & "Cement Drillable Retainer". Set retainer at 2895-ft (15-ft below casing collar). Follow attached procedure.
- 6 - Verify injection rate again through DP & Cement Retainer to 1500 psi.
- 7 - With stinger into retainer, cement open hole with 70 bbls of Premium Lite w/ 3% CaCl, 0.25 pps Cello-Flake, 5 pps LCM-1, 0.4% FL-52 and 0.4% SMS @ 12.1 ppg.
- 8 - Pump all the slurry mixed or to a maximum of 1500 psi.
- 9 - Displace to retainer; string out and circulate hole clean. POOH.

### ABOVE 1700-FT SQUEEZE BEHIND 7" CASING

- 1 - RIH with 4 x 0.6" gun shots & perforate 7" 20 ppf J-55 ST&C casing at 1600-ft. 25-ft below casing collar. POOH. Verify injection rate to retainer maximum holding capacity, get with Baker Operator.
- 2 - Install cement head on landing joint with 7" top rubber plug.
- 3 - Pump; 10 bbls of gel water, 10 bbls of water & 19 sxs (10 bbls) of scav @ 11.0 ppg. Lead in w/ 65 bbls Premium lite @ 12.1 ppg, Tail in w/ 20 bbls Type III cmt @ 14.6 ppg. displace plug w/ 60 bbls of water to 1550-ft (50-ft above perforations). Hold plug with shut in pressure, closing cement head valves for 2 hrs.
- 4 - Open cement head valves after 2 hrs. and verify for flow back. If flow back pressure does not show, R/D cement head & L/D Landing joint
- 5 - P/U 6-1/4" roller cone bit, near bit stabilizer (1/8" under gauge), and 10 drill collar and drill cement plug & retainer to top of 7" shoe. Circulate hole
- 6 - Test casing pressuring up to 600 psi for 30 min. & report.
- 7 - POOH and L/D 6-1/4" roller cone bit.
- 8 - P/U air Hammer and drill out 7" shoe & ahead to TD on production section @ 8014'
- 9 - Proceed as original program.