

UNITED STATES  
DEPARTMENT OF INTERIOR  
BUREAU OF LAND MANAGEMENT

FORM APPROVED  
Budget Bureau No. 1004-0135  
Expires: March 31, 1993

SUNDRY NOTICE AND REPORTS ON WELLS

Do not use this form for proposals to drill or to deepen or reentry to a different reservoir. Use "APPLICATION TO DRILL" for permit for such proposals

SUBMIT IN TRIPLICATE

RECEIVED

NOV 20 2009

Bureau of Land Management  
Farmington Field Office

5. Lease Designation and Serial No.  
NMSF-078767
6. If Indian, Allottee or Tribe Name
7. If Unit or CA, Agreement Designation  
Rosa Unit
8. Well Name and No.  
Rosa Unit 019D
9. API Well No.  
30-039-30781
10. Field and Pool, or Exploratory Area  
BLANCO MV/BASIN DK/BASIN MC
11. County or Parish, State  
Rio Arriba, New Mexico

CHECK APPROPRIATE BOX(s) TO INDICATE NATURE OF NOTICE, REPORT, OR OTHER DATA

TYPE OF SUBMISSION	TYPE OF ACTION
Notice of Intent	Abandonment
X Subsequent Report	Recompletion
Final Abandonment	Plugging Back
	Casing Repair
	Altering Casing
	X Other Completion
	Change of Plans
	New Construction
	Non-Routine Fracturing
	Water Shut-Off
	Conversion to Injection
	Dispose Water
	(Note: Report results of multiple completion on Well Completion or Recompletion Report and Log form.)

13. Describe Proposed or Completed Operations (Clearly state all pertinent details, and give pertinent dates, including estimated date of starting any proposed work. If well is directionally drilled, give subsurface locations and measured and true vertical depths for all markers and zones pertinent to this work.)\*

9-16-09 - RU BWWC and run CBL, TOC @ 3490'

9-22-09 - MIRU AWS #471 to prep for rigless frac

9-23-09 - Test production csg to 1500 psi for 30 min with no leak off. DO cement & FC to PBTD @ 8157'

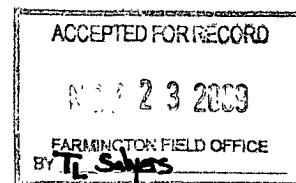
9-24-09 - RDMO AWS #471

10-2-09 - Rigless - perf Dakota, 8031'-8149', with 78, 0.34" holes

10-5-09 - Frac Dakota with 4971# 100 mesh BASF followed with 64,277# 40/70 BASF. Set Flo-thru BP @ 7746', unable to get free from BP, decision was made to pull out of rope socket, get on well with rig and fish WL tools

10-6-09 - MIRU AWS #748 to fish WL tools and DO BP

10-10-09 - DO Flo-thru BP @ 7746'



RCVD DEC 1 '09  
OIL CONS. DIV.  
DIST. 3

14. I hereby certify that the foregoing is true and correct

Signed

Heather Riley

Title Regulatory Spec

Date 11/18/2009

(This space for Federal or State office use)

Approved by

Title

Date

Conditions of approval, if any:

Title 18 U.S.C. Section 1001, makes it a crime for any person knowingly and willfully to make to any department or agency of the United States any false, fictitious or fraudulent statements or representations as to any matter within its jurisdiction.

NMOC

## **Rosa Unit #19D – Page 2**

**10-11-09** – RDMO AWS #748

**10-12-09** – Rigless – Set Flo-thru BP @ 7876'. Perf lower Mancos, 7272'-7734' with 81, 0.34" holes

**10-17-09** – Frac lower Mancos with 6396# 100 mesh BASF followed with 98,292# 40/70 BASF. Set Flo-thru BP @ 7250'. Perf upper Mancos, 6960'-7220', with 81, 0.34" holes. Frac upper Mancos with 6406# 100 mesh BASF followed with 92,349# 40/70 BASF

**10-27-09** – Rigless – Set CBP @ 6334'. Perf Mesaverde formation 6040'-6090', 5856'-5900', 5638'-5642' & 5580'-5588' and do DFIT tests

**10-30-09** – MIRU AWS #471 to finish DFIT tests and complete mesaverde

**11-7-09** – Perf lower Mesaverde, 5816'-6181', with 69, 0.34" holes. Frac lower Mesaverde with 80,000# 20/40 mesh BASF. Set Flo-thru BP @ 5796'. Perf upper Mesaverde, 5353'-5734'. With 63, 0.34" holes. Frac upper Mesaverde with 80,120# 20/40 mesh BASF.

**11-10-09** – DO FTBP @ 5796'.

**11-13-09** – DO CBP @ 6334'. DO Flo-thru frac plug @ 7250'. DO Flo-thru frac plug @ 7876'. FLOW TEST: Duration = 2 hr, Test Method, choke = 400 lbs, MCF/D = 2395 MCFD, Csg Psi = 2, Tbg Psi = 0 psi, Gas Type = wet, Gas Disposition = non flaring, Choke Size = 32/64" choke

**11-16-09** - Land well as follows top down w/ KB correction- tbg hanger, 108 jts 2-3/8" 4.7# N-80, EUE tbg, 141 jts 2-3/8" J-55 4.7# EUE tbg, 1.78" I.D. SN @ 7973', 1 jt tbg, half MS exp chk @ 8006'. ✓

# ROSA UNIT #019D

Spud: 08/25/09

BLANCO MV / BASIN MC / BASIN DK

Completed: 11/16/09

## Surface Location:

1980' FSL and 660' FWL  
NW/4 SW/4 Sec 24 (L), T31N, R06W  
Rio Arriba, NM

## Bottom Hole Location:

803' FSL and 694' FWL  
SW/4 SW/4 Sec 24 (M), T31N, R06W  
Rio Arriba, NM

Elevation: 6311' GR

API # 30-039-30781

Top	MD Depth	TVD Depth
Lewis	3682'	3464'
Cliffhouse Ss.	5562'	5344'
Point Lookout	5814'	5596'
Mancos	6270'	6051'
Graneros	7903'	7684'
Dakota	8031'	7812'

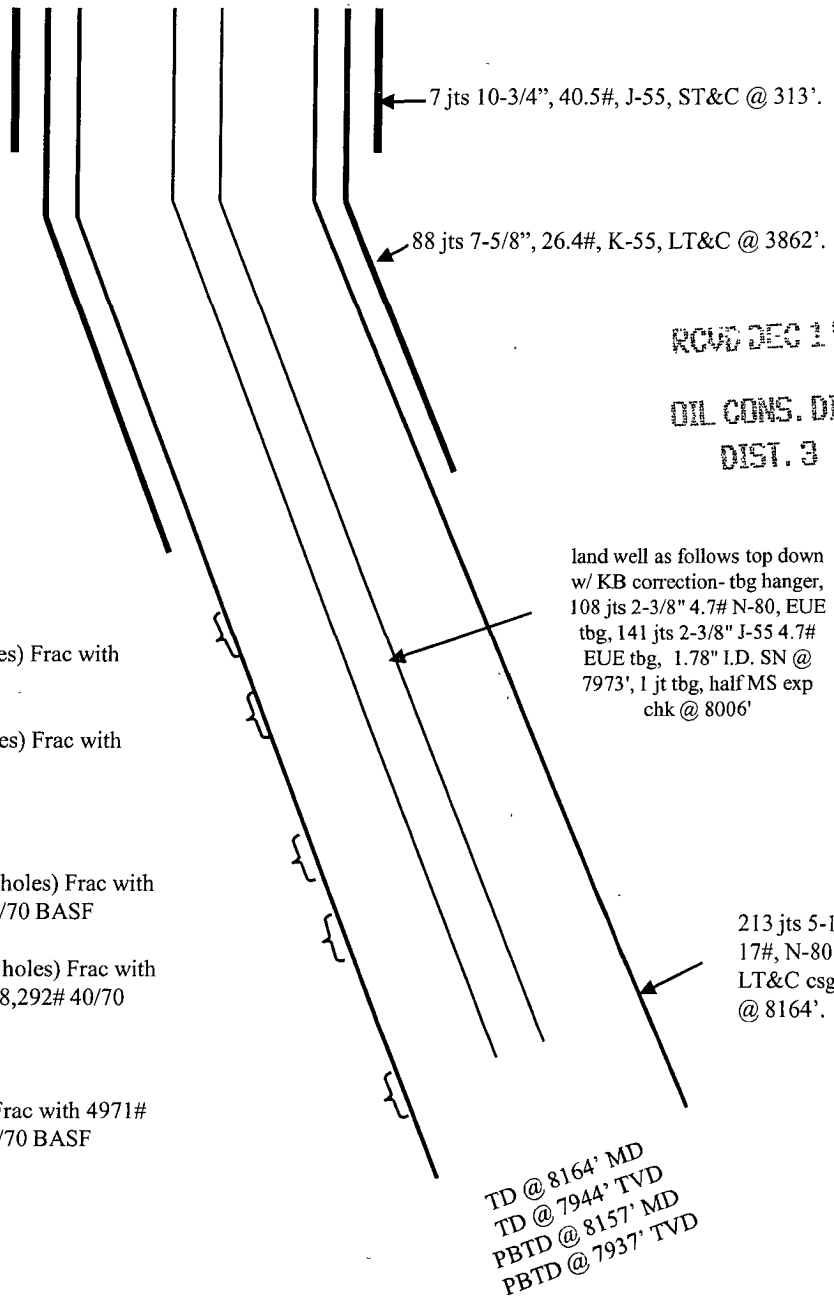
Upper MV: 5353'-5734' (63, 0.34" holes) Frac with 80,120# 20/40 mesh BASF

Lower MV: 5816'-6181' (69, 0.34" holes) Frac with 80,000# 20/40 mesh BASF

Upper Mancos: 6960'-7220' (81, 0.34" holes) Frac with 6406# 100 mesh followed w/92,349# 40/70 BASF

Lower Mancos: 7272'-7734' (81, 0.34" holes) Frac with 6396# 100 mesh BASF followed with 98,292# 40/70 BASF

Dakota: 8031'-8149' (78, 0.34" holes) Frac with 4971# 100 mesh BASF followed w/64,277# 40/70 BASF



RCVD DEC 1 '09

OIL CONS. DIV.  
DIST. 3

Hole Size	Casing	Cement	Volume	Top of Cmt
14-3/4"	10-3/4", 40.5#	300 sxs	539 cu.ft.	Surface
9-7/8"	7-5/8", 26.4#	590 sxs	1456 cu.ft.	Surface
6-3/4"	5-1/2", 17#	360 sxs	504 cu.ft.	3490' CBL