



# United States Department of the Interior

## BUREAU OF LAND MANAGEMENT

Farmington Field Office  
1235 La Plata Highway, Suite A  
Farmington, New Mexico 87401

IN REPLY REFER TO  
NMNM-12759  
3162.3-1 (111)

December 16, 2009

RCVD DEC 22 '09

OIL CONS. DIV.  
DIST. 3

XTO Energy Inc.  
Attn.: Kyla Vaughan  
2700 Farmington Ave.  
Bldg. K, Suite 1  
Farmington, NM 87401

45-34009

Dear Ms. Vaughan:

Reference is made to your Application for Permit to Drill (APD) the **No. 14 Gallegos** well, located **1585' FSL and 1960' FWL, Section 35, T26N, R11W, San Juan County, New Mexico**. This APD was approved on January 12, 2007 with an expiration date of January 12, 2009. According to our records, no known activity has taken place at this location.

In view of the foregoing, this office is rescinding the approval due to the expiration of this APD. In addition, we will require a letter confirming that no surface disturbing activities have been conducted at this well site. Please file letter within 30 days of receipt of this notice. Any surface disturbance conducted must be rehabilitated in accordance with the standards and guidelines established by this office.

If you have any questions regarding the above contact Shea Valdez at (505) 599-8969

Sincerely,

Shea Valdez  
Petroleum Engineering,

Petroleum Management Team

cc: NMOCD

138

UNITED STATES  
DEPARTMENT OF THE INTERIOR  
BUREAU OF LAND MANAGEMENT

FORM APPROVED  
OMB NO. 1004-0137  
Expires March 31, 2007

XTO Energy Inc  
HBP ALLOCATED

APPLICATION FOR PERMIT TO DRILL OR REENTER

NOB: 06-10-36  
APDP: 10-7  
MP: BLM  
SMA: BLM  
BOND: BLM  
CAPA: NEEDS

5W

1a. Type of Work <input checked="" type="checkbox"/> DRILL <input type="checkbox"/> REENTER		5. Lease Serial No. <b>NNM12759</b>
1b. Type of Well <input type="checkbox"/> Oil Well <input checked="" type="checkbox"/> Gas Well <input type="checkbox"/> Other <input checked="" type="checkbox"/> Single Zone <input type="checkbox"/> Multiple Zone		6. If Indian, Allottee or Tribe Name <b>N/A</b>
2. Name of Operator <b>XTO Energy Inc.</b>		7. Unit or CA Agreement Name and No. <b>SW-1004 NNM75877</b>
3a. Address <b>2700 Farmington Ave., Bldg. K. Ste 1 Farmington, NM</b>		8. Lease Name and Well No. <b>Gallegos #14</b>
3b. Phone No. (include area code) <b>505-324-1090</b>		9. API Well No. <b>30-045-34009</b>
4. Location of Well (Report location clearly and in accordance with any State requirements)* At surface <b>1585 FSL x 1960 FWL in Sec 35, T26N, R11W NESW</b> At proposed prod. zone <b>SAME</b>		10. Field and Pool, or Exploratory <b>Basin Fruitland Coal</b>
14. Distance in miles and direction from nearest town or post office* <b>Approximately 19 miles South of Bloomfield, NM</b>		11. Sec., T., R., M., or Blk. and Survey or Area <b>Sec 35, T26N, R11W</b>
15. Distance from proposed* location to nearest property or lease line, ft. (Also to nearest drg. unit line, if any) <b>1585'</b>	16. No. of Acres in lease <b>160.00</b>	12. County or Parish <b>San Juan</b>
18. Distance from proposed location* to nearest well, drilling, completed, applied for, on this lease, ft. <b>2650'</b>	19. Proposed Depth <b>1600'</b>	13. State <b>NM</b>
20. BLM/BIA Bond No. on file <b>UTB000138 NW150</b>	21. Elevations (Show whether DF, KDB, RT, GL, etc.) <b>6314' Ground Elevation</b>	17. Spacing Unit dedicated to this well <b>S/2 320</b>
22. Approximate date work will start* <b>January 2007</b>	23. Estimated duration <b>2 weeks</b>	

24. Attachments

The following, completed in accordance with the requirements of Onshore Oil and Gas Order No. 1, shall be attached to this form:

- Well plat certified by a registered surveyor.
- A Drilling Plan
- A Surface Use Plan (if the location is on National Forest System lands, the SUPO shall be filed with the appropriate Forest Service Office)
- Bond to cover the operations unless covered by an existing bond on file (see Item 20 above).
- Operator certification.
- Such other site specific information and/or plans as may be required by the authorized officer.

SEE ATTACHED FOR  
CONDITIONS OF APPROVAL

25. Signature <i>Kyla Vaughan</i>	Name (Printed/Typed) <b>Kyla Vaughan</b>	Date <b>10/13/06</b>
Title <b>Regulatory Compliance Tech</b>		
Approved by (Signature) <i>[Signature]</i>	Name (Printed/Typed) <b>AFM</b>	Date <b>1/12/07</b>
Title <b>AFM</b>	Office <b>EFO</b>	

Application approval does not warrant or certify that the applicant holds legal or equitable title to those rights in the subject lease which would entitle the applicant to conduct operations thereon.  
Conditions of approval, if any, are attached.

Title 18 U.S.C. Section 1001 and Title 43 U.S.C. Section 1212, make it a crime for any person knowingly and willfully to make to any department or agency of the United States any false, fictitious or fraudulent statements or representations as to any matter within its jurisdiction.

\*(Instructions on page 2)

APD/ROW

DRILLING OPERATIONS AUTHORIZED ARE  
SUBJECT TO COMPLIANCE WITH ATTACHED  
"GENERAL REQUIREMENTS".

FARMINGTON

This action is subject to technical and  
procedural review pursuant to 43 CFR 3165.3  
and appeal pursuant to 43 CFR 3165.4

DISTRICT I  
1625 N. French Dr., Hobbs, N.M. 88240

DISTRICT II  
1301 W. Grand Ave., Artesia, N.M. 88210

DISTRICT III  
1000 Rio Brazos Rd., Aztec, N.M. 87410

DISTRICT IV  
1220 South St. Francis Dr., Santa Fe, NM 87505

State of New Mexico  
Energy, Minerals & Natural Resources Department

OIL CONSERVATION DIVISION

1220 South St. Francis Dr.  
Santa Fe, NM 87505

Form C-102

Revised October 12, 2005

Submit to Appropriate District Office

State Lease - 4 Copies

Fee Lease - 3 Copies

☐ AMENDED REPORT

RECEIVED

WELL LOCATION AND ACREAGE DEDICATION PLAT

<sup>1</sup> API Number	<sup>2</sup> Pool Code 71629	<sup>3</sup> Pool Name Basin Fruitland Coal
<sup>4</sup> Property Code	<sup>5</sup> Property Name GALLEGOS	<sup>6</sup> Well Number 14
<sup>7</sup> OGRID No. 167067	<sup>8</sup> Operator Name XTO ENERGY INC.	<sup>9</sup> Elevation 6314'

<sup>10</sup> Surface Location

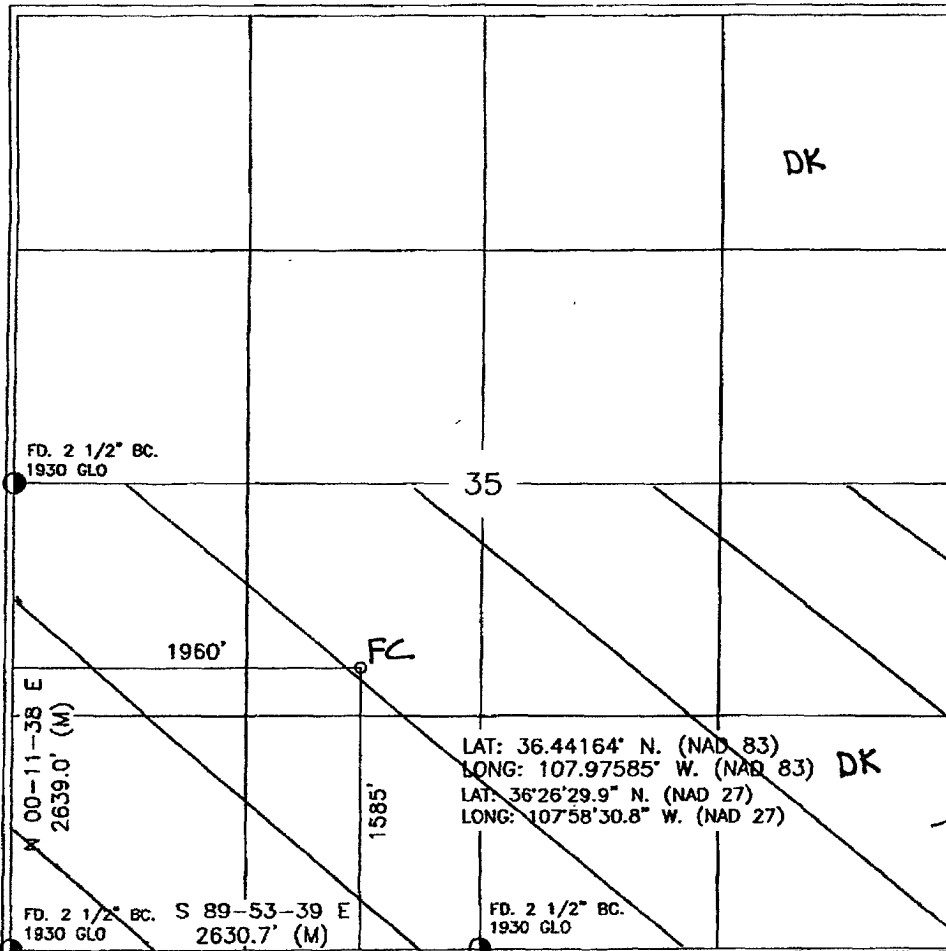
UL or lot no.	Section	Township	Range	Lot Idn	Feet from the	North/South line	Feet from the	East/West line	County
K	35	26-N	11-W		1585	SOUTH	1960	WEST	SAN JUAN

<sup>11</sup> Bottom Hole Location If Different From Surface

UL or lot no.	Section	Township	Range	Lot Idn	Feet from the	North/South line	Feet from the	East/West line	County
<sup>12</sup> Dedicated Acres 512 320 ✓			<sup>13</sup> Joint or Infill		<sup>14</sup> Consolidation Code		<sup>15</sup> Order No.		

NO ALLOWABLE WILL BE ASSIGNED TO THIS COMPLETION UNTIL ALL INTERESTS HAVE BEEN CONSOLIDATED  
OR A NON-STANDARD UNIT HAS BEEN APPROVED BY THE DIVISION

16



<sup>17</sup> OPERATOR CERTIFICATION

I hereby certify that the information contained herein is true and complete to the best of my knowledge and belief, and that this organization either owns a working interest or unleased mineral interest in the land including the proposed bottom hole location or has a right to drill this well at this location pursuant to a contract with an owner of such a mineral or working interest, or to a voluntary pooling agreement or a compulsory pooling order heretofore entered by the division.

*Kelly Small*  
Signature Date  
Printed Name

<sup>18</sup> SURVEYOR CERTIFICATION

I hereby certify that the well location shown on this plat was plotted from field notes of actual surveys made by me or under my supervision, and that the same is true and correct to the best of my belief.

APRIL 3, 2006

Date of Survey

Signature and Title of Professional Surveyor



Certificate Number