

**UNITED STATES  
DEPARTMENT OF THE INTERIOR  
BUREAU OF LAND MANAGEMENT**

SUBMIT IN TRIPLICATE\*  
(Other instructions on reverse side)

FORM APPROVED  
OMB NO. 1004-0136  
Expires: February 28, 1995

RECEIVED  
APR 03 2003

**APPLICATION FOR PERMIT TO DRILL OR DEEPEN**

1a. TYPE OF WORK <b>DRILL</b> <input checked="" type="checkbox"/> <b>DEEPEEN</b> <input type="checkbox"/>		7. UNIT AGREEMENT NAME 070 Farmington, NM <b>28096</b>	
b. TYPE OF WELL OIL WELL <input type="checkbox"/> GAS WELL <input checked="" type="checkbox"/> OTHER <input type="checkbox"/> SINGLE ZONE <input type="checkbox"/> MULTIPLE ZONE <input checked="" type="checkbox"/>		8. FARM OR LEASE NAME, WELL NO. <b>Bolack "C" #19</b>	
2. NAME OF OPERATOR <b>XTO Energy Inc.</b>		9. API WELL NO. <b>3004531911</b>	
3. ADDRESS AND TELEPHONE NO. <b>2700 Farmington Ave., Bldg. K. Ste 1 Farmington, NM 87401</b>		10. FIELD AND POOL, OR WILDCAT <b>Basin Dakota Blanco Mesaverde Basin Mancos</b>	
4. LOCATION OF WELL (Report location clearly and in accordance with any State requirements.)* At surface <b>725' FSL &amp; 1345' FEL Sec 31, T27N, R08W</b> At proposed prod. zone <b>same</b>		11. SEC., T., R., M., OR BLK. AND SURVEY OR AREA <b>0 Sec 31, T27N, R08W</b>	
14. DISTANCE IN MILES AND DIRECTION FROM NEAREST TOWN OR POST OFFICE* <b>Approx 24 air miles south down Largo Canyon from the Blanco NM Post Office</b>		12. COUNTY OR PARISH <b>San Juan</b>	13. STATE <b>NM</b>
15. DISTANCE FROM PROPOSED* LOCATION TO NEAREST PROPERTY OR LEASE LINE, FT. (Also to nearest drlg. unit line, if any) <b>725'</b>	16. NO. OF ACRES IN LEASE <b>2552.22</b>	17. NO. OF ACRES ASSIGNED TO THIS WELL <b>320 DK &amp; MV, 160 Mancos</b>	
18. DISTANCE FROM PROPOSED LOCATION* TO NEAREST WELL, DRILLING, COMPLETED, OR APPLIED FOR, ON THIS LEASE, FT. <b>750'</b>	19. PROPOSED DEPTH <b>6,800'</b>	20. ROTARY OR CABLE TOOLS <b>0'-6,800' w/Rotary Tools</b>	
21. ELEVATIONS (Show whether DF, RT, GR, etc.) <b>6,130' GL</b>		22. APPROX. DATE WORK WILL START* <b>Winter 2004</b>	

23. PROPOSED CASING AND CEMENTING PROGRAM

SIZE OF HOLE	GRADE, SIZE OF CASING	WEIGHT PER FOOT	SETTING DEPTH	QUANTITY OF CEMENT
12-1/4"	9-5/8", J-55	36#	265'	150 sx Type III
8-3/4"	7", J-55	20#	2,500'	400 sx Type III cement
6-1/4"	4-1/2", J-55	10.5#	6,800'	400 sx Premium Lite cement

This action is subject to technical and procedural review pursuant to 43 CFR 3165.2 and appeal pursuant to 43 CFR 3165.4

XTO Energy Inc. plans to drill the above mentioned well as described in the enclosed Surface Use Program.

An El Paso Field Services welltie plat is also included for ROW.

**APD/ROW**

DRILLING OPERATIONS AUTHORIZED ARE SUBJECT TO COMPLIANCE WITH ATTACHED "GENERAL REQUIREMENTS".

IN ABOVE SPACE DESCRIBE PROPOSED PROGRAM: If proposals to deepen, give data on present productive zone and proposed new productive zone. If proposals to drill or deepen directionally, give pertinent data on subsurface locations and measured and true vertical depths. Give blowout preventer program, if any.

24. SIGNED *JW Patton* TITLE Drilling Engineer DATE 9/18/03

(This space for Federal or State office use)

PERMIT NO. \_\_\_\_\_ APPROVAL DATE \_\_\_\_\_

Application approval does not warrant or certify that the applicant holds legal or equitable title to those rights in the subject lease which would entitle the applicant to conduct operations thereon. CONDITIONS OF APPROVAL, IF ANY:

**/s/ Charlie Beecham**

DEC 30 2003

APPROVED BY \_\_\_\_\_ TITLE \_\_\_\_\_ DATE \_\_\_\_\_

\*See Instructions On Reverse Side

NMOC

Title 18 U.S.C. Section 1001, makes it a crime for any person knowingly and willfully to make to any department or agency of the United States any false, fictitious or fraudulent statements or representations as to any matter within its jurisdiction.

DISTRICT I  
P.O. Box 1980, Hobbs, N.M. 88241-1980

DISTRICT II  
P.O. Drawer DD, Artesia, N.M. 88211-0719

DISTRICT III  
1000 Rio Brazos Rd., Aztec, N.M. 87410

DISTRICT IV  
PO Box 2088, Santa Fe, NM 87504-2088

State of New Mexico  
Oy, Minerals & Natural Resources Department

OIL CONSERVATION DIVISION  
P.O. Box 2088  
Santa Fe, NM 87504-2088

Form C-102  
Revised February 21, 1994  
Instructions on back  
Submit to Appropriate District Office  
State Lease - 4 Copies  
Fee Lease - 3 Copies

AMENDED REPORT

WELL LOCATION AND ACREAGE DEDICATION PLAT

<sup>1</sup> API Number 30-045-31911		<sup>2</sup> Pool Code 97732		<sup>3</sup> Pool Name BASIN MAXLOS	
<sup>4</sup> Property Code 28096		<sup>5</sup> Property Name BOLACK C		<sup>6</sup> Well Number 19	
<sup>7</sup> OGRID No. 167067		<sup>8</sup> Operator Name XTO ENERGY INC.		<sup>9</sup> Elevation 6130	

<sup>10</sup> Surface Location

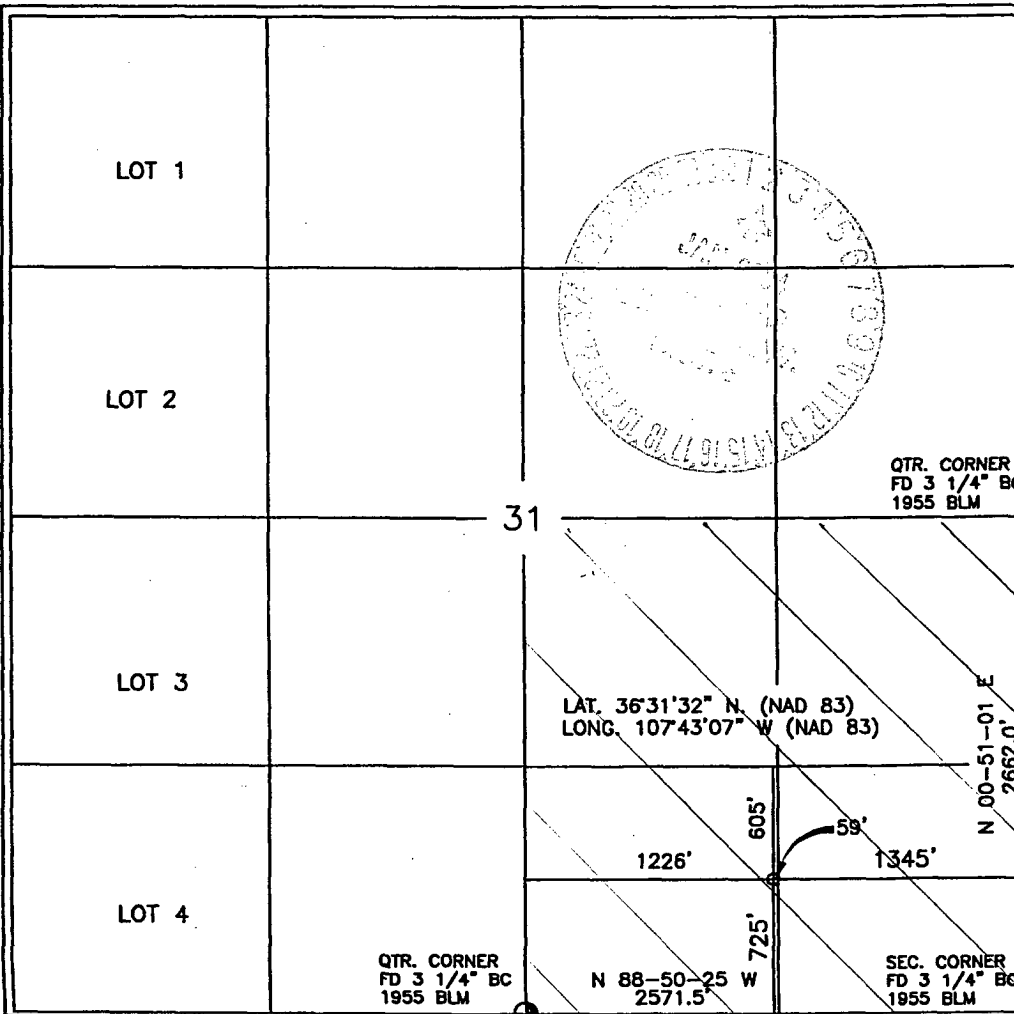
UL or lot no.	Section	Township	Range	Lot Idn	Feet from the	North/South line	Feet from the	East/West line	County
0	31	27-N	8-W		725	SOUTH	1345	EAST	SAN JUAN

<sup>11</sup> Bottom Hole Location if Different From Surface

UL or lot no.	Section	Township	Range	Lot Idn	Feet from the	North/South line	Feet from the	East/West line	County
<sup>12</sup> Dedicated Acres 160 SE/4		<sup>13</sup> Joint or Infill		<sup>14</sup> Consolidation Code		<sup>15</sup> Order No.			

NO ALLOWABLE WILL BE ASSIGNED TO THIS COMPLETION UNTIL ALL INTERESTS HAVE BEEN CONSOLIDATED OR A NON-STANDARD UNIT HAS BEEN APPROVED BY THE DIVISION

16



17 OPERATOR CERTIFICATION

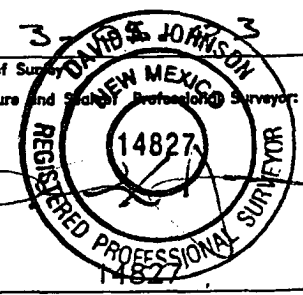
I hereby certify that the information contained herein is true and complete to the best of my knowledge and belief

*Jeffrey W. Patton*  
Signature  
JEFFREY W. PATTON  
Printed Name  
DRILLING ENGINEER  
Title  
9-18-03  
Date

18 SURVEYOR CERTIFICATION

I hereby certify that the well location shown on this plat was plotted from field notes of actual surveys made by me or under my supervision, and that the same is true and correct to the best of my belief.

3  
Date of Survey  
Signature and Seal of Registered Professional Surveyor  
*David S. Johnson*  
14827  
Certificate Number



DISTRICT I  
P.O. Box 1980, Hobbs, N.M. 88241-1980

DISTRICT II  
P.O. Drawer DD, Artesia, N.M. 88211-0719

DISTRICT III  
1000 Rio Brazos Rd., Aztec, N.M. 87410

DISTRICT IV  
PO Box 2088, Santa Fe, NM 87504-2088

State of New Mexico  
ge. Minerals & Natural Resources Department

OIL CONSERVATION DIVISION  
P.O. Box 2088  
Santa Fe, NM 87504-2088

Form C-102  
Revised February 21, 1994  
Instructions on back  
Submit to Appropriate District Office  
State Lease - 4 Copies  
Fee Lease - 3 Copies

AMENDED REPORT

WELL LOCATION AND ACREAGE DEDICATION PLAT

<sup>1</sup> API Number 30045-31911		<sup>2</sup> Pool Code 71599	<sup>3</sup> Pool Name BASIN DAKOTA
<sup>4</sup> Property Code 28096	<sup>5</sup> Property Name BOLACK C		<sup>6</sup> Well Number 19
<sup>7</sup> OGRID No. 167067	<sup>8</sup> Operator Name XTO ENERGY INC.		<sup>9</sup> Elevation 6130

<sup>10</sup> Surface Location

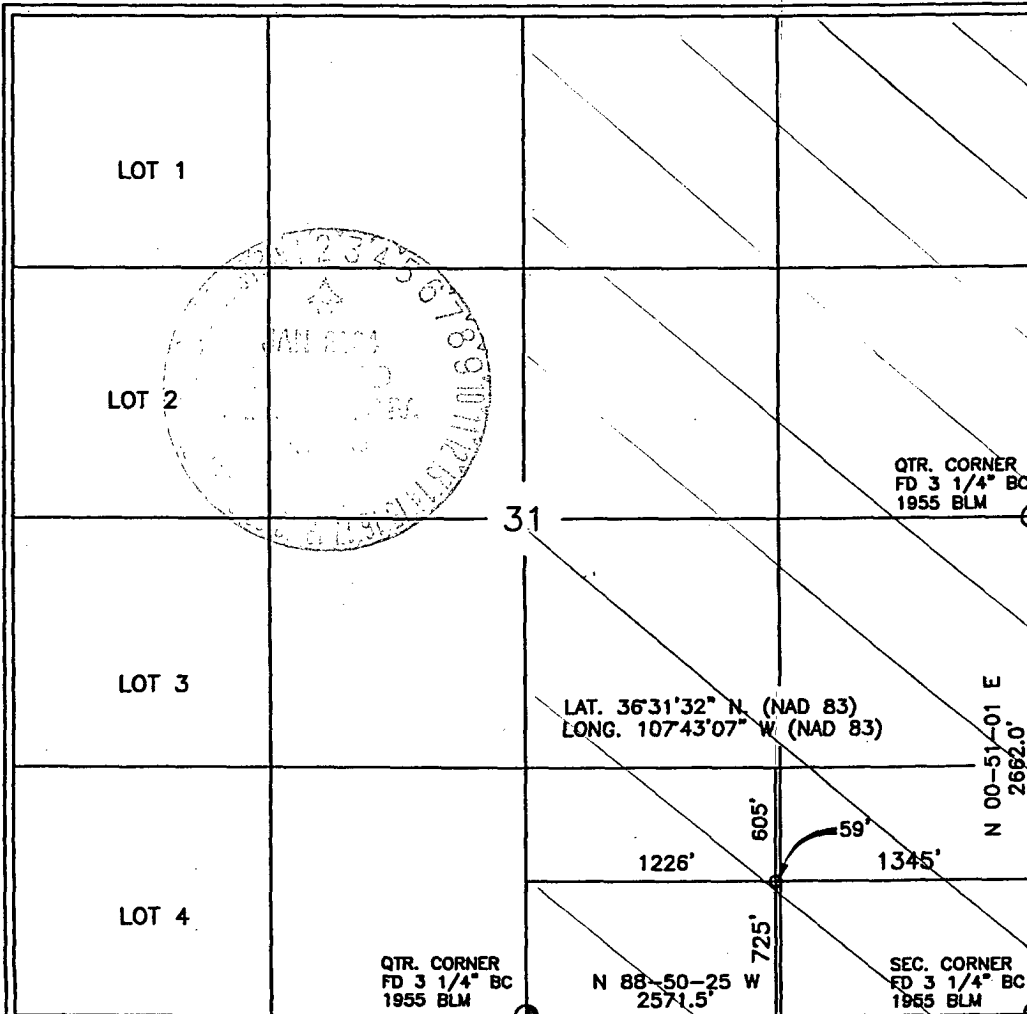
UL or lot no.	Section	Township	Range	Lot Idn	Feet from the	North/South line	Feet from the	East/West line	County
0	31	27-N	8-W		725	SOUTH	1345	EAST	SAN JUAN

<sup>11</sup> Bottom Hole Location If Different From Surface

UL or lot no.	Section	Township	Range	Lot Idn	Feet from the	North/South line	Feet from the	East/West line	County
<sup>12</sup> Dedicated Acres 320 E/2		<sup>13</sup> Joint or Infill I		<sup>14</sup> Consolidation Code		<sup>15</sup> Order No.			

NO ALLOWABLE WILL BE ASSIGNED TO THIS COMPLETION UNTIL ALL INTERESTS HAVE BEEN CONSOLIDATED OR A NON-STANDARD UNIT HAS BEEN APPROVED BY THE DIVISION

16



17 OPERATOR CERTIFICATION

I hereby certify that the information contained herein is true and complete to the best of my knowledge and belief

Signature: *JW Patton*  
 Printed Name: JEFFREY W PATTON  
 Title: DRILLING ENGINEER  
 Date: 9-18-03

18 SURVEYOR CERTIFICATION

I hereby certify that the well location shown on this plat was plotted from field notes of actual surveys made by me or under my supervision, and that the same is true and correct to the best of my belief.

Date of Survey: 9-18-03  
 Signature and Stamp: *DAVID S JOHNSON*  
 Registered Professional Surveyor  
 Certificate Number: 14827

DISTRICT I  
P.O. Box 1980, Hobbs, N.M. 88241-1980

DISTRICT II  
P.O. Drawer DD, Artesia, N.M. 88211-0719

DISTRICT III  
1000 Rio Brazos Rd., Aztec, N.M. 87410

DISTRICT IV  
PO Box 2088, Santa Fe, NM 87504-2088

State of New Mexico  
Department of Minerals & Natural Resources

OIL CONSERVATION DIVISION

P.O. Box 2088  
Santa Fe, NM 87504-2088

Form C-102  
Revised February 21, 1994

Instructions on back  
Submit to Appropriate District Office  
State Lease - 4 Copies  
Fee Lease - 3 Copies

AMENDED REPORT

WELL LOCATION AND ACREAGE DEDICATION PLAT

<sup>1</sup> API Number 30-045-31911		<sup>2</sup> Pool Code 72319		<sup>3</sup> Pool Name Blanco Mesaverde	
<sup>4</sup> Property Code 28096		<sup>5</sup> Property Name BOLACK C		<sup>6</sup> Well Number 19	
<sup>7</sup> OGRID No. 107067		<sup>8</sup> Operator Name XTO ENERGY INC.		<sup>9</sup> Elevation 6130	

<sup>10</sup> Surface Location

UL or lot no.	Section	Township	Range	Lot Idn	Feet from the	North/South line	Feet from the	East/West line	County
0	31	27-N	8-W		725	SOUTH	1345	EAST	SAN JUAN

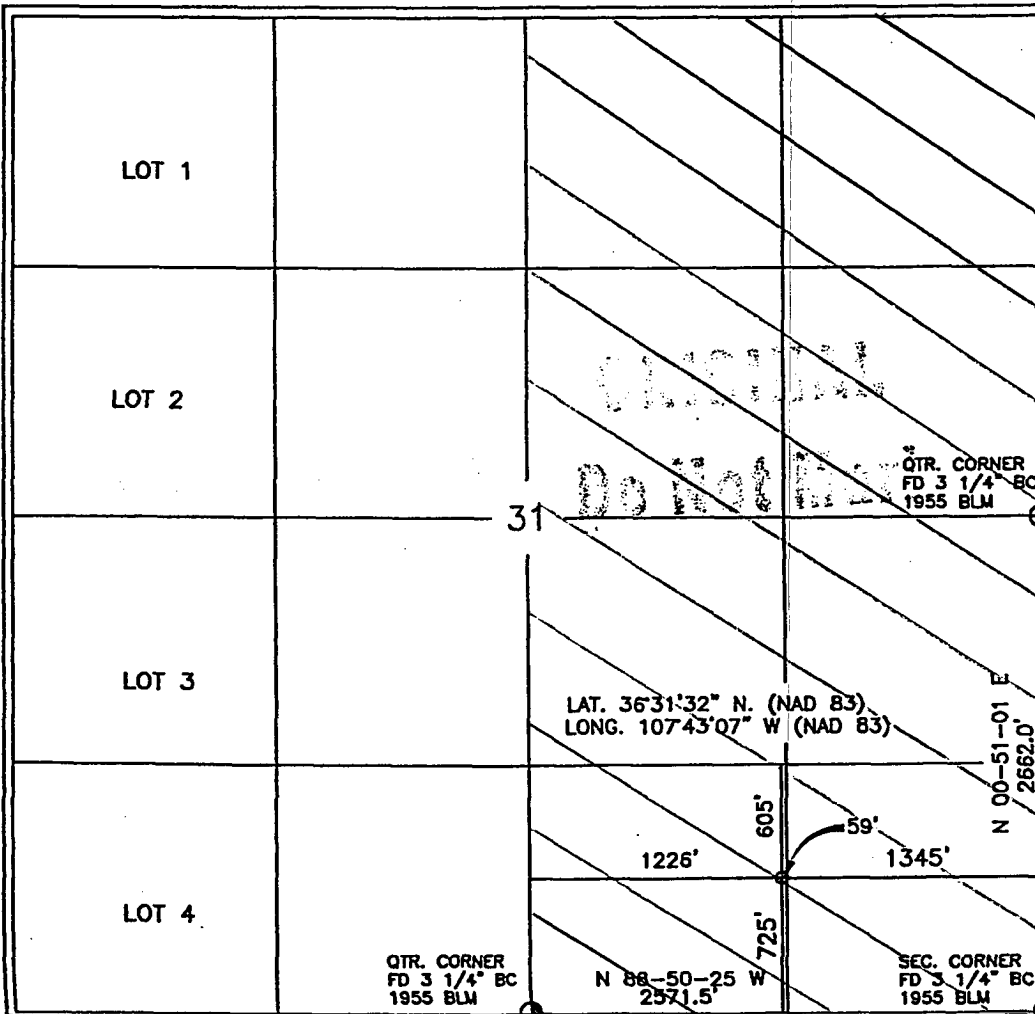
<sup>11</sup> Bottom Hole Location If Different From Surface

UL or lot no.	Section	Township	Range	Lot Idn	Feet from the	North/South line	Feet from the	East/West line	County

<sup>12</sup> Dedicated Acres 320 8/2	<sup>13</sup> Joint or Infill I	<sup>14</sup> Consolidation Code	<sup>15</sup> Order No.
--	------------------------------------	----------------------------------	-------------------------

NO ALLOWABLE WILL BE ASSIGNED TO THIS COMPLETION UNTIL ALL INTERESTS HAVE BEEN CONSOLIDATED OR A NON-STANDARD UNIT HAS BEEN APPROVED BY THE DIVISION

16



17 OPERATOR CERTIFICATION

I hereby certify that the information contained herein is true and complete to the best of my knowledge and belief

*Kelly K Small*  
Signature  
Kelly K Small  
Printed Name  
Drilling Assistant  
Title  
8/1/03  
Date

18 SURVEYOR CERTIFICATION

I hereby certify that the well location shown on this plat was plotted from field notes of actual surveys made by me or under my supervision, and that the same is true and correct to the best of my belief.

3-  
Date of Survey  
Signature and Seal of Registered Professional Surveyor  
14827  
Certificate Number



# XTO ENERGY INC.

Bolack "C" #19

APD Data

September 22, 2003

Surface Location: 725' FSL & 1,345' FEL, Sec 31, T27N, R08W County: San Juan State: New Mexico

TOTAL DEPTH: ±6,800'

GR ELEV: 6,130'

OBJECTIVE: Dakota/Gallup/Mesaverde

Est KB ELEV: 6,143' (13' AGL)

## 1. MUD PROGRAM:

INTERVAL	0' to 265'	265' to 2,500'	2,500' to TD
HOLE SIZE	12-1/4"	8-3/4"	6-1/4"
MUD TYPE	FW/Native Mud	FW/Polymer	Air/Foam
WEIGHT	8.6-8.8	8.6-9.0	
VISCOSITY	28-32	29-34	
WATER LOSS	NC	NC	

Remarks: Use fibrous materials as needed to control seepage and lost circulation. Pump high viscosity sweeps as needed for hole cleaning. RU air compressors after setting the intermediate csg. Drill with air or foam to TD.

## 2. CASING PROGRAM:

Surface Casing: 9-5/8" casing to be set at ± 265' in 8.6 ppg mud

Interval	Length	Wt	Gr	Cplg	Coll Rating (psi)	Burst Rating (psi)	Jt Str (M-lbs)	ID (in)	Drift (in)	SF Coll	SF Burst	SF Ten
0'-265'	265'	36.0#	J-55	STC	2020	3520	394	8.921	8.765	5.98	5.68	15.73

Intermediate Casing: 7" casing to be set at ±2,500' in 9.0 ppg mud.

Interval	Length	Wt	Gr	Cplg	Coll Rating (psi)	Burst Rating (psi)	Jt Str (M-lbs)	ID (in)	Drift (in)	SF Coll	SF Burst	SF Ten
0'-2,500'	2,500'	20.0#	J-55	STC	2270	3740	234	6.456	6.331	1.15	1.31	2.57

Production Casing: 4-1/2" casing to be set at 6,800' in air.

Interval	Length	Wt	Gr	Cplg	Coll Rating (psi)	Burst Rating (psi)	Jt Str (M-lbs)	ID (in)	Drift (in)	SF Coll	SF Burst	SF Ten
0'-6,800'	6,800'	10.5#	J-55	STC	4010	4790	132	4.052	3.927	1.33	1.20	1.90

EXHIBIT E

3. WELLHEAD:

- A. Bradenhead: 9-5/8" x 7" 2,000 psig WP (4,000 psig test).
- Casinghead: 7" x 4-1/2" 3,000 psig WP (6,000 psig test).

4. CEMENT PROGRAM (Slurry design may change slightly, but the plan is to circulate cement to surface on both casing strings):

- A. Surface: 9-5/8", 36.0#, J-55, STC casing to be set at  $\pm 265'$ .

Lead: 150 sx of Type III or equivalent cement containing accelerator and LCM typically mixed at 14.5 ppg, 1.39 ft<sup>3</sup>/sk, & 6.30 gal wtr/sk.

*Total slurry volume is 209 ft<sup>3</sup>, 100% excess of calculated annular volume to 265'.*

- B. Intermediate: 7", 20.0#, J-55, STC casing to be set at  $\pm 2,500'$ .

Lead: 250 sx of Type III or equivalent cement containing extender, accelerator and LCM typically mixed at 11.4 ppg, 3.03 ft<sup>3</sup>/sk, 18.51 gal wtr/sx.

Tail: 150 sx of Type III or equivalent cement containing accelerator and LCM typically mixed at 14.5 ppg, 1.41 ft<sup>3</sup>/sk, 6.30 gal wtr/sx.

*Total slurry volume is 969 ft<sup>3</sup>, circulated to surface. This value is  $\pm 100%$  (excess) over gage hole volume.*

- C. Production: 4-1/2", 10.5#, J-55, STC casing to be set at  $\pm 6,800'$ .

Lead: 250 sx of Class "H" Premium Lite High Strength (65/35/6) containing dispersant, fluid loss, salt and LCM typically mixed at 12.5 ppg, 2.01 ft<sup>3</sup>/sk, 10.12 gal wtr/sx.

Tail: 150 sx of Class "H" or equivalent cement containing extender, dispersant, fluid loss and LCM typically mixed at 14.7 ppg, 1.38 ft<sup>3</sup>/sk, 6.70 gal wtr/sx..

*Total estimated slurry volume for the 4-1/2" production casing is 707 ft<sup>3</sup> for 4,800' of fill. Est. TOC should be @  $\pm 2,100'$ . 40% (excess) over gage hole volume has been added to the number of sacks indicated..*

*Note: The slurry design may change slightly based upon actual conditions. Final cement volumes will be determined for the caliper logs plus 40%.*

5. LOGGING PROGRAM:

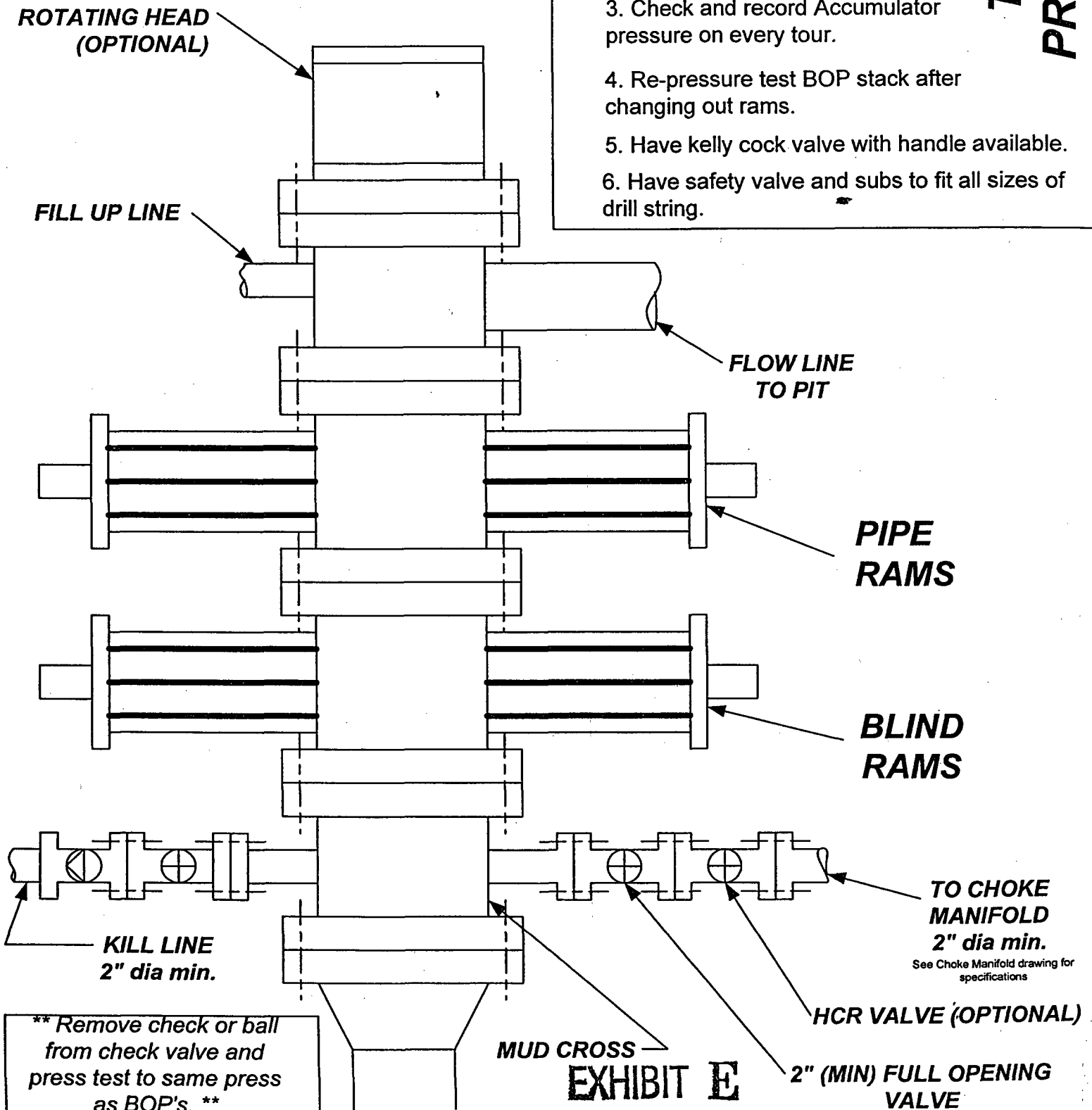
A. Mud Logger: A two man mud logging crew will come on the hole @ 3,000' and remain on the hole until TD.

B. Open Hole Logs as follows: Run Dual Induction/MSFL/GR/CAL/SP/CNL/LDT (lithodensity) from TD to the bottom of the intermediate csg (@  $\pm 2,500'$  MD). Run FMI log from 6,300' to  $\pm 6,800'$ . Run cased hole GR/CCL from TD to surface.

# BOP SCHEMATIC FOR DRILLING OPERATIONS CLASS 1 (2M) NORMAL PRESSURE

## TESTING PROCEDURE

1. Test BOP after installation:  
 Pressure test BOP to 200-300 psig (low pressure) for 5 min.  
 Test BOP to Working Press or to 70% internal yield of surf csg (10 min).
2. Test operation of (both) rams on every trip.
3. Check and record Accumulator pressure on every tour.
4. Re-pressure test BOP stack after changing out rams.
5. Have kelly cock valve with handle available.
6. Have safety valve and subs to fit all sizes of drill string.



\*\* Remove check or ball from check valve and press test to same press as BOP's. \*\*

MUD CROSS  
**EXHIBIT E**

2" (MIN) FULL OPENING VALVE