

District I
1625 N. French Dr., Hobbs, NM 88240
District II
1301 W. Grand Avenue, Artesia, NM 88210
District III
1000 Rio Brazos Road, Aztec, NM 87410
District IV
1220 S. St. Francis Dr., Santa Fe, NM 87505

State of New Mexico
Energy Minerals and Natural Resources

Form C-101
Revised June 10, 2003

Oil Conservation Division
1220 South St. Francis Dr.
Santa Fe, NM 87505

Submit to appropriate District Office
State Lease - 6 Copies
Fee Lease - 5 Copies

☐ AMENDED REPORT

APPLICATION FOR PERMIT TO DRILL, RE-ENTER, DEEPEN, PLUGBACK, OR ADD A ZONE

¹ Operator Name and Address West Largo Corp. 8801 S. Yale, Suite 240 Tulsa, OK 74137-3535		² OGRID Number 37197
³ Property Code 1416 <i>B</i>		⁵ Property Name Crockett 25
		⁶ Well No. 1

⁷ Surface Location

UL or lot no.	Section	Township	Range	Lot Idn	Feet from the	North/South line	Feet from the	East/West line	County
D	25	29N	10W		990	North	1310	West	San Juan

⁸ Proposed Bottom Hole Location If Different From Surface

UL or lot no.	Section	Township	Range	Lot Idn	Feet from the	North/South line	Feet from the	East/West line	County

⁹ Proposed Pool 1
Basin Fruitland Coal

¹⁰ Proposed Pool 2

¹¹ Work Type Code N	¹² Well Type Code G	¹³ Cable/Rotary R	¹⁴ Lease Type Code P	¹⁵ Ground Level Elevation 5521'
¹⁶ Multiple N	¹⁷ Proposed Depth 2074'	¹⁸ Formation Lewis	¹⁹ Contractor Not selected	²⁰ Spud Date December 1, 2003

²¹ Proposed Casing and Cement Program

Hole Size	Casing Size	Casing weight/foot	Setting Depth	Sacks of Cement	Estimated TOC
8.750"	7.000"	20	200	55	surface
6.250"	4.500"	10.5	2074	180	surface

²² Describe the proposed program. If this application is to DEEPEN or PLUG BACK, give the data on the present productive zone and proposed new productive zone. Describe the blowout prevention program, if any. Use additional sheets if necessary. Drill 8 3/4" hole to 200' using fresh water mud. Run and cement surface casing to surface. WOC 12 hours. Nipple up 7 1/16" 3M BOPE. Pressure test surface casing and BOPE to minimum of 600 psig for 15 minutes. Drill 6 1/4" hole to TD using polymer and water. Log well. Run production casing and cement to surface in a single stage. Move out drilling rig. Move in completion equipment. Run cased hole correlation logs. Test production casing to 3500 psig for 15 minutes. Perforate select Fruitland Coal intervals and stimulate with a foamed KCl water based fluid and sand. Install production equipment and gas sales meter.

²³ I hereby certify that the information given above is true and complete to the best of my knowledge and belief.		OIL CONSERVATION DIVISION	
Signature: <i>Robert E. Fielder</i>		Approved by: <i>[Signature]</i>	
Printed name: Robert E. Fielder		Title: DEPUTY OIL & GAS INSPECTOR, DIST. 3	
Title: Agent		Approval Date: NOV 19 2003 Expiration Date: NOV 19 2004	
E-mail Address: pmci@acs-online.net			
Date: November 17, 2003	Phone: 505.632.3869	Conditions of Approval: Attached <input type="checkbox"/>	

District I
PO Box 1980, Hobbs, NM 88241-1980

District II
PO Drawer DD, Artesia, NM 88211-0719

District III
1000 Rio Brazos Rd., Aztec, NM 87410

District IV
PO Box 2088, Santa Fe, NM 87504-2088

State of New Mexico
Energy, Minerals & Natural Resources Department

OIL CONSERVATION DIVISION
PO Box 2088
Santa Fe, NM 87504-2088

Form C-102
Revised February 21, 1994
Instructions on back
Submit to Appropriate District Office
State Lease - 4 Copies
Fee Lease - 3 Copies

☐ AMENDED REPORT

WELL LOCATION AND ACREAGE DEDICATION PLAT

*API Number 30-045-32014		*Pool Code 71629	*Pool Name BASIN FRUITLAND COAL
*Property Code 14161 14168	*Property Name CROCKETT 25		*Well Number 1
*OGRID No. 37197	*Operator Name WEST LARGO CORPORATION		*Elevation 5521'

10 Surface Location

UL or lot no.	Section	Township	Range	Lot Idn	Feet from the	North/South line	Feet from the	East/West line	County
D	25	29N	10W		990	NORTH	1310	WEST	SAN JUAN

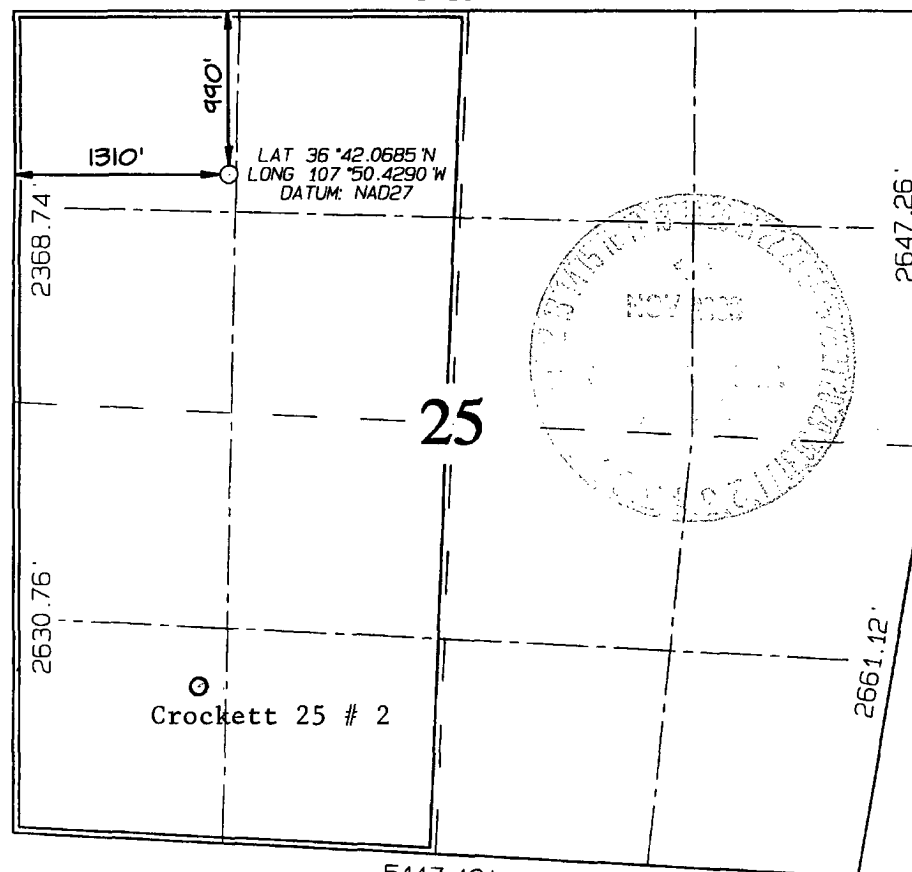
11 Bottom Hole Location If Different From Surface

UL or lot no.	Section	Township	Range	Lot Idn	Feet from the	North/South line	Feet from the	East/West line	County

12 Dedicated Acres 320.0 Acres - W/2	13 Joint or Infill Y	14 Consolidation Code	15 Order No.
---	-------------------------	-----------------------	--------------

NO ALLOWABLE WILL BE ASSIGNED TO THIS COMPLETION UNTIL ALL INTERESTS HAVE BEEN CONSOLIDATED
OR A NON-STANDARD UNIT HAS BEEN APPROVED BY THE DIVISION

5495.82'



17 OPERATOR CERTIFICATION

I hereby certify that the information contained herein is true and complete to the best of my knowledge and belief

Robert E. Fielder
Signature

Robert E. Fielder

Printed Name

Agent

Title

November 17, 2003

Date

18 SURVEYOR CERTIFICATION

I hereby certify that the well location shown on this plat was plotted from field notes of actual surveys made by me or under my supervision, and that the same is true and correct to the best of my belief.

Survey Date: NOVEMBER 7, 2003

Signature and Seal of Professional Surveyor



JASON C. EDWARDS

Certificate Number 15269