

UNITED STATES
DEPARTMENT OF INTERIOR
BUREAU OF LAND MANAGEMENT

RECEIVED

FORM APPROVED
Budget Bureau No. 1004-0135

SUNDRY NOTICE AND REPORTS ON WELLS

Do not use this form for proposals to drill or to deepen or reentry to a different reservoir. Use "APPLICATION TO DRILL" for permit for such proposals

MAR 25 2010

Bureau of Land Management
Form 3160-100 (Rev. 10-2008)

5. Lease Designation and Serial No.
SF-078767

If Indian, Allottee or Tribe Name

SUBMIT IN TRIPLICATE

7. If Unit or CA, Agreement Designation

1. Type of Well
Oil Well ☒ Gas Well ☐ Other ☐

8. Well Name and No.
Rosa Unit #30B

2. Name of Operator
WILLIAMS PRODUCTION COMPANY

9. API Well No.
30-039-26601

3. Address and Telephone No.
PO BOX 3102 MS 25-4, TULSA, OK 74101 (918) 573-3046

10. Field and Pool, or Exploratory Area
BLANCO MV/BASIN DK

4. Location of Well (Footage, Sec., T., R., M., or Survey Description)
20' FSL, 2360' FWL, SE/4 SW/4, SEC 12, T31N, R06W

11. County or Parish, State
RIO ARRIBA, NEW MEXICO

CHECK APPROPRIATE BOX(s) TO INDICATE NATURE OF NOTICE, REPORT, OR OTHER DATA

TYPE OF SUBMISSION

TYPE OF ACTION

☒ Notice of Intent
☐ Subsequent Report
☐ Final Abandonment

Abandonment
Recompletion
Plugging Back
Casing Repair
Altering Casing
☒ Other Commingle

Change of Plans
New Construction
Non-Routine Fracturing
Water Shut-Off
Conversion to Injection
Dispose Water
(Note: Report results of multiple completion on Well Completion or Recompletion Report and Log form.)

13. Describe Proposed or Completed Operations (Clearly state all pertinent details, and give pertinent dates, including estimated date of starting any proposed work. If well is directionally drilled, give subsurface locations and measured and true vertical depths for all markers and zones pertinent to this work.)*

Williams has made several attempts to first deliver the DK formation. In doing so, we lost swabbing tools in the tubing string. We are unable to first deliver this formation in its current configuration; therefore, Williams would like to commingle both formations in this well. Commingling this well would give us the ability to affectively produce both zones.

Commingle Procedure:

1. Mesa Verde tubing will be pulled
2. Dakota tubing will be pulled
3. Production packer will be removed
4. Well will be cleaned out to PBTD
5. A single string of 2-3/8" tubing will be run to ~8050'.
6. Run completion profiler for allocation purposes
7. Install plunger lift system.
8. Remove one set of wellhead facilities.
9. Return to production as DK/MV commingled well.

RCVD MAR 31 '10
OIL CONS. DIV.
DIST. 3

No RWC in place

14. I hereby certify that the foregoing is true and correct

Signed

Rachel Lippert

Title Engineering Technician II

Date March 23, 2010

(This space for Federal or State office use)

Approved by

Original Signed: Stephen Mason

Title

Date

MAR 26 2010

Conditions of approval, if any:



EXPLORATION & PRODUCTION

COMMINGLING PROCEDURE

ROSA #30B
T31N, R6W, SECT. 12
ELEVATION: 6486' GR
PBTD:8174' MD

WELLBORE STATUS:

MV 2-1/16", 3.3 #/FT EUE, To 5975' MD

DK 2-1/16", 3.3 #/FT EUE, To 8110' MD

5-1/2" BAKER MODEL D PACKER @ 6250' MD

OBJECTIVE: Commingle MV and DK

1. Pull Mesa Verde tubing
2. Pull Dakota tubing
3. Remove Production packer
4. Clean out to PBTD
5. Acid stimulate each formation if needed.
6. Run completion profiler for allocation purposes.
7. Complete with single string 2-3/8" tubing landed @ 8050'.
8. Install plunger lift system.
9. Remove one set of wellhead facilities
10. Return to production as DK/MV commingle

PRIOR TO PRIMARY JOB

- 1) Test rig anchors.
- 2) Verify location is OK for rig operations.
- 3) Ensure JSA, ECP's and lockout procedures are in place for the flowline and other energized piping or equipment.
- 4) Acquire 8200' of 2-3/8" N-80 or stronger work string.
- 5) Acquire ~8200' of 2-3/8", EUE, 8rd, 4.7 #/ft J-55 tubing.
- 6) Acquire wellhead and convert from dual tubing string to a single, 2-3/8" tubing string.
- 7) Acquire 2-3/8", I.D. Type X or XN type nipple.

- 8) **KCL** on location to treat kill water as needed.

SAFETY NOTICE

PERSONNEL SAFETY IS THE NUMBER ONE JOB.
NO EXCEPTIONS!!!
**PLEASE FOLLOW APPROPRIATE WILLIAMS CONTRACTOR
PROTOCOLS FOR THIS JOB PLAN**

Please see your Williams Business Representative if you have any questions; Contractor protocols can be located in the Williams E&P Contractor Guide

PRIMARY JOB

Note: Safety meetings shall be held each morning before work and subsequent "tailgate" safety meetings are to be held during the day when operation objectives shift in nature and intent (i.e. beginning/ending fishing operations, squeeze jobs, rigging down, perforating, etc.) Please ensure these are documented per section 2.2.7 of the Williams E&P Contractor Guide

1. MI and spot equipment to include fluid pumps and tanks.
2. MIRU.
3. ND/NU killing well with KCL water as necessary
4. Test the BOP's to 2500 psig minimum. If they fail, then rebuild and retest. If they cannot pass tests **DO NOT PROCEED** and notify Production Engineer.
5. Pick up on long string (DK) to determine if the long string will pull.
6. If long string will release, then POOH with short string (MV) and proceed to step # 7. If the long string will not release, proceed with sub-steps 6.1 through 6.3 below:
 - 6.1. POOH with short string one or two joints to confirm ability to move.
 - 6.2. Pick up additional joints of 2-1/16" pipe and wash to top of packer at 6250' using heavy air mist. Wash as necessary until returns clean up to approximately ¼ cup of sand in 5 gallons of water returns.
 - 6.3. After returns clean up, POOH with pipe laying down string.
7. Spear or screw in and POOH with 2-1/16" 3.3 #/ft long string (DK) string using straight pull to pull out of Baker Model D packer seal assembly up to 40,000 #'s.
8. POOH with lay down tubing 2-1/16" 3.3# J-55 and seal assembly.
9. NU additional pipe ram for work string or replace pipe ram with annular preventer.
10. Pick up work string.

11. Pick up Baker Model D packer millover & pulling tool, using DC's and assembly as necessary and RIH on work string to mill over Baker Model D packer @ 6250' MD and RIH on work string. If work string not inspected prior to work do not exceed 70% of joint strength of the work string pipe when pulling.
12. Millover and attempt to pluck Baker Model D packer at 6250' MD. If using 4.7 #/ft work string, weight of dry string above packer is 32.6k #s. If using 6.5 #/ft work string, dry string weight will be 41.5k #'s. When attempting to pull packer and tail pipe determine work string weight and do not pull more than 70% of joint strength.
13. POOH with packer and lay down work string, tools and packer.
14. RIH w/ work string.
15. Clean out to 8174' PBTD using a bit, scraper, and air unit package. Acid stimulate if needed.
16. TOOH w/ work string.
17. TIH with 2-3/8" production string to 4627' (+/- 150 above top MV perf @ 4777').
18. MIRU slickline
19. TIH w/ gauge ring/dummy assembly w/ to PBTD.
 - 19.1. Ensure slickline unit can run @ 30 to 150 fpm
20. Allow flow to stabilize overnight.
21. RIH w/ completion profiler and log the production intervals per ProTechnics procedures.
22. TIH w/ completion profiler and **record final wellhead pressure.**
23. TIH w/ blanking plug and set a blanking plug in the F-nipple to isolate tubing from well.
24. TOH w/ slick line and bleed tubing pressure down to zero.
25. RD slick line

Note: Only use pipe dope on the pins. Do not dope the couplings.

26. RIH w/ tubing and set @ 8050' w/ seat nipple & standing valve, testing tubing to 1000 psi every 900'. Report leaks and replace.

Note: This well should be dead and the BOP's shall be closed and locked at the end of daily operations.

27. Ensure tubing is not plugged prior to releasing the rig

28. N/D BOP's and N/U wellhead.

29. Return well to production.

30. R/D, move off location.

31. Return well to production.



Exploration & Production

Production Allocation Recommendation Rosa #30B (DK/MV)

WELLNAME: Rosa #30B
LOCATION: SE/4 SW/4 Sec.12, T31N, R06W
API No.: 03-039-26601

FIELD: BlancoMVBasin DK
COUNTY: Rio Arriba, NM
Date: March 22, 2010

Current Status: The Rosa #30B is currently a dual completion well. Williams has made several attempts to first deliver the DK formation. In doing so, we lost swabbing tools in the tubing string. We are unable to first deliver this formation in its current configuration; therefore, Williams would like to commingle both formations in this well. Commingling this well would give us the ability to affectively produce both zones.

Commingle Procedure:

1. Mesa Verde tubing will be pulled
2. Dakota tubing will be pulled
3. Production packer will be removed
4. Well will be cleaned out to PBDT
5. A single string of 2-3/8" tubing will be run to ~8050'.
6. Run completion profiler for allocation purposes
7. Install plunger lift system.
8. Remove one set of wellhead facilities.
9. Return to production as DK/MV commingled well.

Allocation Method: Due to inability to first deliver the DK formation, Williams recommends running a completion profiler once well is comingled to evaluate allocation percentages.

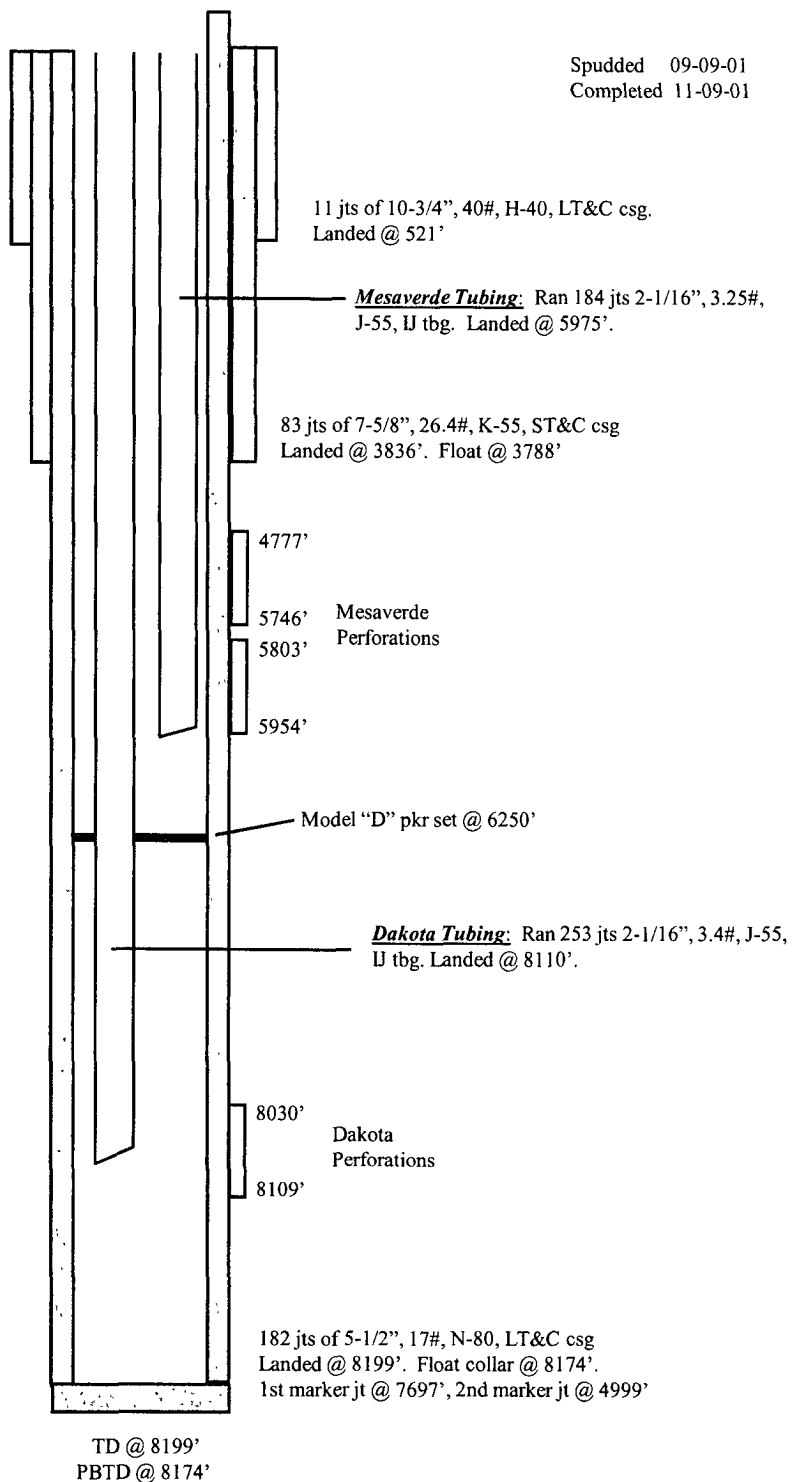
ROSA UNIT #30B **BLANCO MV/BASIN DK**

Location: 20' FSL, 2360' FWL
 SE/4 SW/4 Section 12(N), T31N, R6W
 Rio Arriba, NM

Spudded 09-09-01
 Completed 11-09-01

Elevation: 6486' GR

<i>Tops</i>	<i>Depth</i>
Kirtland	2673'
Pictured Cliffs	3328'
Cliff House	5545'
Point Lookout	5799'
Mancos	6133'
Dakota	8030'



CliffHouse/Menefee 4777' - 5746' (26, 0.38" holes)
 80,000# of 20/40 sand in 1889 BBl's slick water

Point Lookout 5803' - 5954' (24, 0.38" holes)
 80,000# of 20/40 sand in 1897 BBl's slick water

Dakota 8030' - 8109' (21, 0.38" holes)
 28,000# of 20/40 Acfrac SB Excel resin coated proppant

HOLE SIZE	CASING	CEMENT	CMT TOP
14-3/4"	10-3/4"	415 sx, 585 cu.ft.	488'
9-7/8"	7-5/8"	780 sx, 1459 cu.ft.	3770'
6-3/4"	5-1/2"	275 sx, 551 cu.ft.	3100'